

Handwritten musical notation on a single staff, featuring a sequence of notes with various accidentals (sharps, flats, naturals) and a fermata at the end.

Handwritten musical notation for a piano piece, consisting of two staves. The upper staff has a treble clef and the lower a bass clef. Includes dynamic markings like 'p' and 'pp', and a 'Ped...' instruction.

85

Handwritten musical notation on a single staff, showing a melodic line with various accidentals and a fermata.

90

Handwritten musical notation for a piano piece, consisting of two staves. Includes dynamic markings like 'pp' and 'p', and some scribbled-out notes in the lower staff.

Handwritten musical notation on a single staff, showing a melodic line with various accidentals and a fermata.

95

Handwritten musical notation for a piano piece, consisting of two staves. Includes dynamic markings like 'p' and 'mf', and some scribbled-out notes in the lower staff.

Handwritten musical notation on a single staff, showing a melodic line with various accidentals and a fermata.

Handwritten musical notation for a piano piece, consisting of two staves. Includes dynamic markings like 'p' and 'mf', and some scribbled-out notes in the lower staff.

100

Musical staff with treble clef, showing rests and time signatures: $\frac{1}{8}$ and $\frac{3}{4}$.

Handwritten musical score for piano, featuring complex chordal textures and melodic lines in both hands. Includes dynamic markings like *mf* and *pp*.

Musical staff with treble clef, including the tempo marking *con bordinop* and time signature $\frac{4}{8}$.

Handwritten musical score for piano, continuing the complex textures from the previous system. Includes dynamic markings like *pp*.

Musical staff with treble clef, starting with measure number 110. Includes dynamic marking *p*.

Handwritten musical score for piano, featuring complex chordal textures and melodic lines in both hands.

Musical staff with treble clef, starting with measure number 115.

Handwritten musical score for piano, continuing the complex textures from the previous system.

Handwritten musical notation on a single staff, featuring various notes, rests, and accidentals.

120

Handwritten musical notation on two staves, with the number 120 written above the first staff.

125

Handwritten musical notation on two staves, with the number 125 written above the first staff.

Handwritten musical notation on a single staff, showing a long note with a fermata.

130

calmo

Handwritten musical notation on two staves, with the number 130 and the word "calmo" written above the first staff.

135

Handwritten musical notation on two staves, with the number 135 written above the first staff.

Handwritten musical notation on two staves, concluding with a double bar line and a flourish.

ped.....

llm

Трітій місяць (Rondo)

Maestoso $\text{♩} = 140$

Violine



Piano



Handwritten musical notation on a single staff, featuring a treble clef, a key signature of one flat, and a series of notes with stems and beams.

Handwritten musical notation on two staves, showing a piano accompaniment with chords and melodic lines.

Handwritten musical notation on a single staff, continuing the melodic line from the previous system.

20

Handwritten musical notation on two staves, featuring a piano accompaniment with chords and melodic lines.

Handwritten musical notation on a single staff, continuing the melodic line.

25

Handwritten musical notation on two staves, showing a piano accompaniment with chords and melodic lines.

Handwritten musical notation on a single staff, continuing the melodic line.

30

Handwritten musical notation on two staves, featuring a piano accompaniment with chords and melodic lines, including a "cresc." marking.

dim...

Handwritten musical notation on a single staff, featuring a treble clef, a key signature of one flat, and a melodic line with various note values and rests.

Handwritten musical notation for a piano accompaniment, showing two staves with complex chordal textures and melodic fragments.

Handwritten musical notation on a single staff, continuing the melodic line from the previous system.

35

Handwritten musical notation for a piano accompaniment, showing two staves with dense chordal textures and melodic lines.

Handwritten musical notation on a single staff, continuing the melodic line.

Handwritten musical notation for a piano accompaniment, showing two staves with complex textures and melodic fragments.

Handwritten musical notation on a single staff, continuing the melodic line.

Handwritten musical notation for a piano accompaniment, showing two staves with complex textures and melodic fragments.

Handwritten musical notation, measures 45-49. Includes treble and bass staves with notes, rests, and accidentals. Measure 45 is marked with a large '45'.

Handwritten musical notation, measures 50-54. Includes treble and bass staves. Measure 50 is marked with a large '50'. Performance markings include *piss* and *p*.

Handwritten musical notation, measures 55-59. Includes treble and bass staves. Measure 55 is marked with a large '55'. Performance markings include *arco* and *mf*.

Handwritten musical notation, measures 60-64. Includes treble and bass staves. Measure 60 is marked with a large '60'. Performance markings include *f* and *mf*.

Handwritten musical notation on a single staff, featuring various chords and melodic lines with accidentals.

Handwritten musical notation on two staves, showing a piano accompaniment with chords and a melodic line.

Handwritten musical notation on a single staff with the number "65" and performance markings "pizz" and "arco".

Handwritten musical notation on two staves, including dynamic markings like "f" and "p".

Handwritten musical notation on a single staff with the number "70".

Handwritten musical notation on two staves, showing a piano accompaniment with chords and a melodic line.

Handwritten musical notation on a single staff with the number "75".

Handwritten musical notation on two staves, showing a piano accompaniment with chords and a melodic line.

This page contains a handwritten musical score consisting of several systems of staves. The notation includes treble and bass clefs, various note values, rests, and dynamic markings. The score is organized into systems, with some systems containing multiple staves. Key features include:

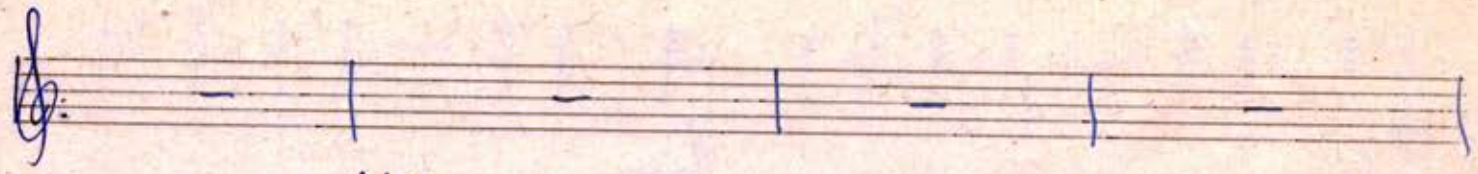
- System 1:** A single treble clef staff with notes and rests.
- System 2:** A grand staff (treble and bass clefs) with notes and rests. A dynamic marking of **80** is present.
- System 3:** A single treble clef staff with notes and rests.
- System 4:** A grand staff with notes and rests. A dynamic marking of **85** is present.
- System 5:** A single treble clef staff with notes and rests.
- System 6:** A grand staff with notes and rests.
- System 7:** A grand staff with notes and rests.
- System 8:** A grand staff with notes and rests. A dynamic marking of **90** is present.

Handwritten musical score, measures 85-95. The system includes a treble clef staff with a key signature of one sharp (F#) and a common time signature (C). The music features a melodic line with slurs and a piano accompaniment with chords and triplets. A tempo marking of 95 is written in the center of the system.

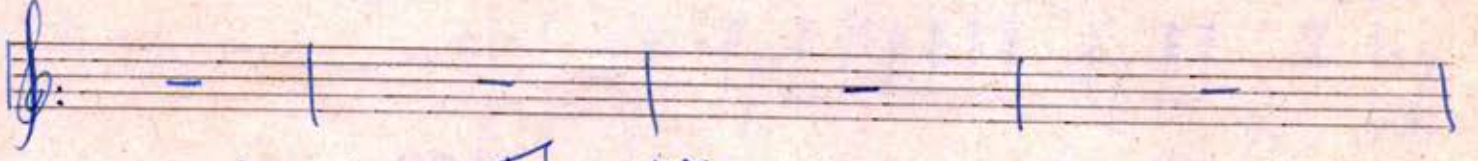
Handwritten musical score, measures 95-100. The system includes a treble clef staff with a key signature of one flat (Bb) and a common time signature (C). The music features a melodic line with slurs and a piano accompaniment with chords and triplets. A tempo marking of 100 is written in the center of the system.

Handwritten musical score, measures 100-105. The system includes a treble clef staff with a key signature of one flat (Bb) and a common time signature (C). The music features a melodic line with slurs and a piano accompaniment with chords and triplets.

Handwritten musical score, measures 105-110. The system includes a treble clef staff with a key signature of one flat (Bb) and a common time signature (C). The music features a melodic line with slurs and a piano accompaniment with chords and triplets. A tempo marking of 105 is written at the beginning of the system.



110



115



120



Handwritten musical notation on a single staff, featuring complex chord structures and melodic lines.

125

Handwritten musical notation for a piano accompaniment, showing two staves with chords and bass lines.

Handwritten musical notation on a single staff, continuing the melodic and harmonic development.

130

Handwritten musical notation for a piano accompaniment, including the Chinese character '人' (ren) written above the notes.

Handwritten musical notation on a single staff, showing a melodic line with some rests.

Handwritten musical notation for a piano accompaniment, with the number '135' written above the staff.

135

Handwritten musical notation on a single staff, featuring a melodic line with various accidentals.

140

Handwritten musical notation for a piano accompaniment, showing two staves with chords and bass lines.

145

150

155

This is a handwritten musical score on aged paper, consisting of approximately 12 staves. The notation is dense and includes various musical symbols such as clefs, notes, rests, and accidentals. Key features include:

- Tempo Markings:** The number "160" is written above the second staff, and "170" is written above the eighth staff.
- Dynamic Markings:** The word "arco" is written above the eighth staff, indicating a change in playing technique.
- Staff Structure:** The score is organized into systems of two staves each. The first system has a treble clef on the top staff and a bass clef on the bottom staff. Subsequent systems also use two staves, though the clefs vary.
- Complexity:** The notation is highly complex, featuring many beamed notes, slurs, and intricate chordal structures, suggesting a piece of advanced technical difficulty.

Handwritten musical notation on a single staff, featuring a series of chords and melodic lines with various accidentals.

175

Handwritten musical notation on two staves, including a piano part with chords and a vocal line with notes and a "mf" dynamic marking.

Handwritten musical notation on a single staff, showing a sequence of chords and melodic fragments.

Handwritten musical notation on two staves, featuring complex piano accompaniment with many chords and a vocal line.

Handwritten musical notation on a single staff, consisting of a melodic line with various notes and rests.

180

Handwritten musical notation on two staves, including a piano part with chords and a vocal line with a "marcato" dynamic marking.

185

Handwritten musical notation on two staves, showing piano accompaniment and a vocal line with various dynamics and phrasing.

Handwritten musical notation on a page with ten staves. The first two staves contain musical notation in blue ink, including notes, rests, and chords. The number '190' is written above the second staff. The remaining eight staves are empty.