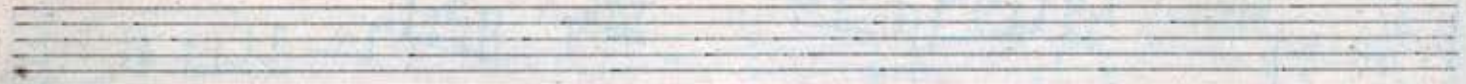


H



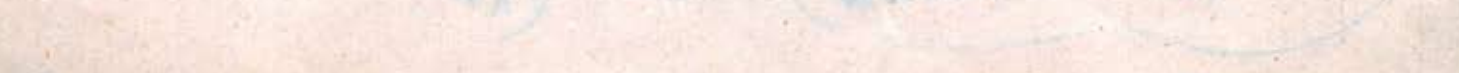
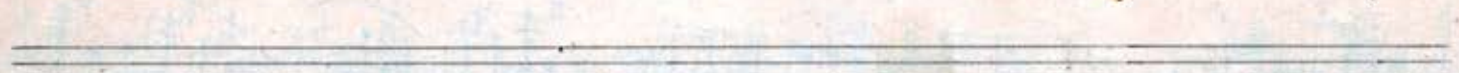
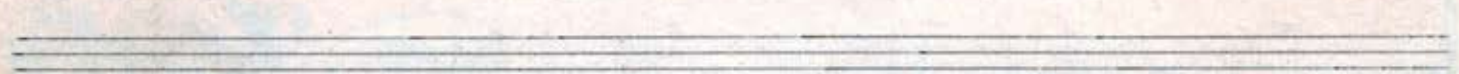
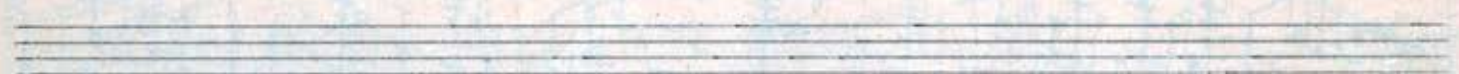
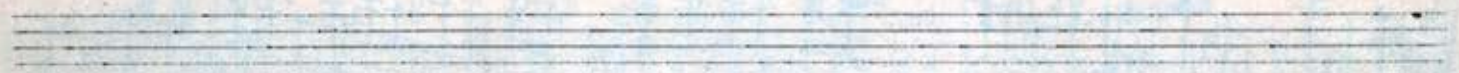
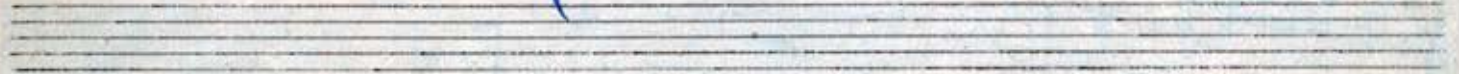
Πιάνο — Πιάνο — Κλαβιερ

Σονάτα για βιολι και πιάνο

Sonate pour Violon et Piano

Sonate für Violine und Klavier

{ N. Σκαγκιλάς.  
N. Σκαγκόττας.





1/2 *Spawlow nepos*

*Molto allegro marcato*

*Violino*

*Piano*

10



Handwritten musical score, first system. It consists of three staves: a single treble clef staff at the top, and a grand staff (treble and bass clefs) below. The music is written in blue ink and includes various notes, rests, and accidentals. A measure rest is present in the first measure of the top staff.

Handwritten musical score, second system. It consists of a single treble clef staff. The music continues with various notes and accidentals.

Handwritten musical score, third system. It consists of a grand staff. A measure rest is present in the first measure of the bass staff. The number "15" is written above the first measure of the treble staff.

Handwritten musical score, fourth system. It consists of a single treble clef staff. The music continues with various notes and accidentals.

Handwritten musical score, fifth system. It consists of a grand staff. The number "20" is written above the first measure of the treble staff. The music continues with various notes and accidentals.

Handwritten musical score, sixth system. It consists of a single treble clef staff. The music continues with various notes and accidentals.

Handwritten musical score, seventh system. It consists of a grand staff. The music continues with various notes and accidentals.



Handwritten musical score, measures 20-25. The score is written on three staves. The top staff is a single melodic line. The middle and bottom staves are piano accompaniment. Measure 25 is marked with a large '25' above the staff. The music features various accidentals and complex rhythmic patterns.

Handwritten musical score, measures 25-30. The score is written on three staves. The top staff is a single melodic line. The middle and bottom staves are piano accompaniment. Measure 30 is marked with a large '30' above the staff. The music continues with complex rhythmic patterns and accidentals.

Handwritten musical score, measures 30-35. The score is written on three staves. The top staff is a single melodic line. The middle and bottom staves are piano accompaniment. Measure 35 is marked with a large '35' above the staff. The music includes the instruction *molto esp. (dolce)* written below the staff.

Handwritten musical score, measures 35-40. The score is written on three staves. The top staff is a single melodic line. The middle and bottom staves are piano accompaniment. Measure 40 is marked with a large '40' above the staff. The music continues with complex rhythmic patterns and accidentals.

Handwritten musical score, measures 40-45. The score is written on three staves. The top staff is a single melodic line. The middle and bottom staves are piano accompaniment. Measure 45 is marked with a large '45' above the staff. The music continues with complex rhythmic patterns and accidentals.



Handwritten musical notation on a single staff, featuring a treble clef and a 2/4 time signature. The notation includes various accidentals (sharps, flats, naturals) and a fermata over the final measure.

Handwritten musical notation on two staves, featuring a treble clef on the upper staff and a bass clef on the lower staff. The notation includes various accidentals and a fermata over the final measure.

Handwritten musical notation on a single staff, featuring a treble clef and a 2/4 time signature. The notation includes various accidentals and a fermata over the final measure.

Handwritten musical notation on two staves, featuring a treble clef on the upper staff and a bass clef on the lower staff. The notation includes various accidentals and a fermata over the final measure.

Handwritten musical notation on a single staff, featuring a treble clef and a 2/4 time signature. The notation includes various accidentals and a fermata over the final measure.

Handwritten musical notation on two staves, featuring a treble clef on the upper staff and a bass clef on the lower staff. The notation includes various accidentals and a fermata over the final measure. The number "50" is written above the first measure.

Handwritten musical notation on a single staff, featuring a treble clef and a 2/4 time signature. The notation includes various accidentals and a fermata over the final measure. The number "55" is written above the first measure.

Handwritten musical notation on two staves, featuring a treble clef on the upper staff and a bass clef on the lower staff. The notation includes various accidentals and a fermata over the final measure.



Handwritten musical notation on a single staff, featuring a complex melodic line with many accidentals and slurs.

Handwritten musical notation for a piano accompaniment, consisting of two staves. The upper staff has a tempo marking of "60" and includes various chords and melodic fragments. The lower staff contains a bass line with chords.

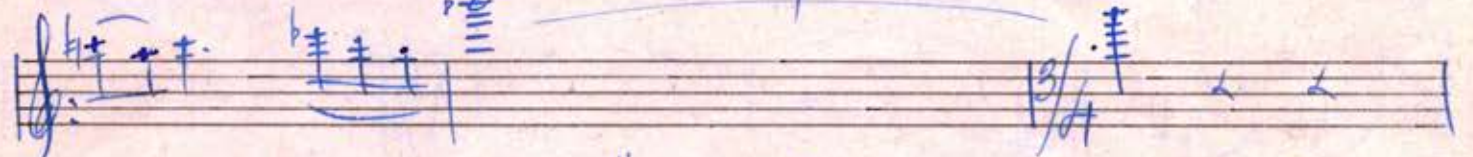
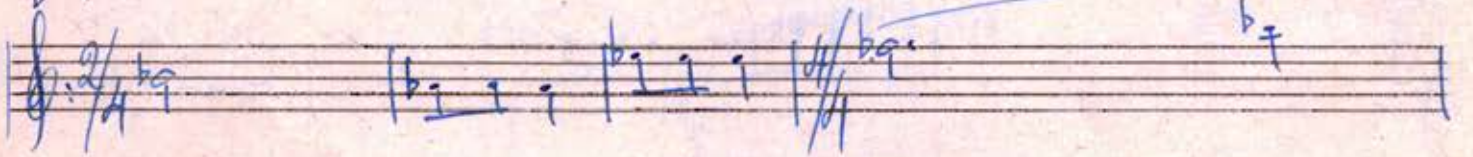
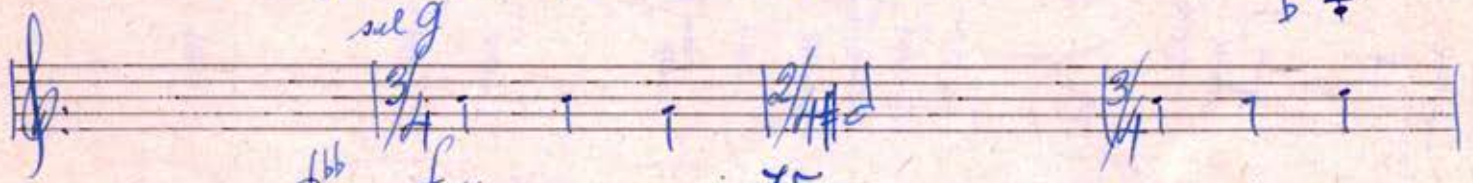
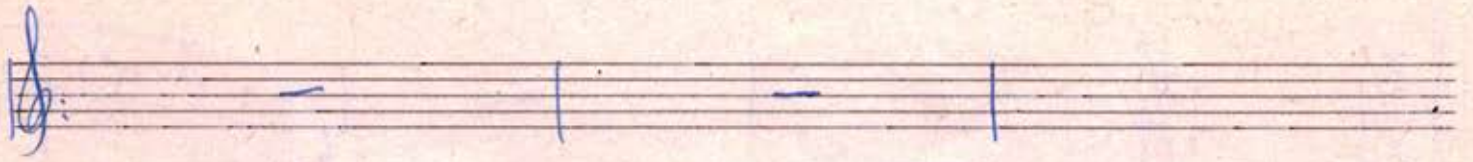
Handwritten musical notation for a piano accompaniment, consisting of two staves. The upper staff has a tempo marking of "65" and includes a "cresc." marking. The lower staff contains a bass line with chords.

Handwritten musical notation for a piano accompaniment, consisting of two staves. The upper staff has a dynamic marking of "f" and includes a "dim." marking. The lower staff contains a bass line with chords.

A single staff of handwritten musical notation, mostly blank with some faint markings.

Handwritten musical notation for a piano accompaniment, consisting of two staves. The upper staff has a dynamic marking of "f" and includes various chords and melodic fragments. The lower staff contains a bass line with chords.





//



Handwritten musical score in blue ink on aged paper. The score consists of multiple systems of staves. The top system shows a vocal line with a "cresc..." marking. Below are piano accompaniment staves with complex chordal textures and melodic lines. Measure numbers 90 and 95 are clearly visible. The notation includes various accidentals, slurs, and dynamic markings like "f" and "mf".



Musical staff with treble clef, key signature of one flat, and time signature of 4/4. The staff contains a few notes and rests, with the number "100" written below it.

Handwritten musical score for piano, consisting of two staves. The right hand part features complex chords and melodic lines, while the left hand part provides harmonic support with chords and some rhythmic patterns.

Musical staff with treble clef, key signature of one flat, and time signature of 4/4. It contains several notes and rests, with the number "105" written below it.

Handwritten musical score for piano, consisting of two staves. The right hand part features complex chords and melodic lines, while the left hand part provides harmonic support with chords and some rhythmic patterns.

Musical staff with treble clef, key signature of one flat, and time signature of 4/4. It contains several notes and rests, with the number "110" written below it.

Handwritten musical score for piano, consisting of two staves. The right hand part features complex chords and melodic lines, while the left hand part provides harmonic support with chords and some rhythmic patterns.

Musical staff with treble clef, key signature of one flat, and time signature of 4/4. It contains several notes and rests, with the number "110" written below it.

Handwritten musical score for piano, consisting of two staves. The right hand part features complex chords and melodic lines, while the left hand part provides harmonic support with chords and some rhythmic patterns.



Handwritten musical notation on a single staff, starting with a treble clef and a 3/4 time signature. It features a melodic line with various accidentals and a measure rest at the end.

115

Handwritten musical notation for a piano accompaniment, consisting of two staves. The left hand has a complex chordal texture, and the right hand has a melodic line with a '3' above it.

Handwritten musical notation for a piano accompaniment, consisting of two staves. The left hand has a complex chordal texture, and the right hand has a melodic line with a 'f' dynamic marking.

120

Handwritten musical notation for a piano accompaniment, consisting of two staves. The left hand has a complex chordal texture, and the right hand has a melodic line with various accidentals.

125

Handwritten musical notation for a piano accompaniment, consisting of two staves. The left hand has a complex chordal texture, and the right hand has a melodic line with various accidentals.



This image shows a page of handwritten musical notation in blue ink on aged, yellowed paper. The score is organized into several systems, each consisting of multiple staves. The notation is complex, featuring a variety of notes, rests, and chords. There are several instances of dynamic markings, including '130' and '135', which likely refer to measure numbers or specific performance instructions. The handwriting is fluid and expressive, with some ink bleed-through visible from the reverse side of the page. The overall appearance is that of a personal or working manuscript.



Handwritten musical notation on a single staff, featuring various chords and melodic lines.

Handwritten musical notation on two staves, showing a piano accompaniment with chords and a melodic line.

Handwritten musical notation on a single staff, including a measure marked with the number 140.

Handwritten musical notation on two staves, showing a piano accompaniment with chords and a melodic line.

Handwritten musical notation on a single staff, including a measure marked with the number 145.

Handwritten musical notation on two staves, showing a piano accompaniment with chords and a melodic line.

Handwritten musical notation on a single staff, including a measure marked with the number 150.

Handwritten musical notation on two staves, showing a piano accompaniment with chords and a melodic line.



Handwritten musical notation on a single staff. It begins with a treble clef and a 3/4 time signature. The notation includes several measures of music with notes, rests, and dynamic markings. There are some corrections and scribbles throughout the line.

Handwritten musical notation for a piano accompaniment, consisting of two staves. The upper staff uses a treble clef and the lower staff uses a bass clef. The music features complex chordal textures and melodic fragments, with some notes marked with 'y'.

Handwritten musical notation on a single staff, showing a melodic line with several measures of music, including rests and notes.

155

Handwritten musical notation for a piano accompaniment, consisting of two staves. The music is characterized by dense, vertical textures, possibly representing chords or arpeggiated figures. There are some dynamic markings like 'f' and 'ff'.

Handwritten musical notation on a single staff, showing a melodic line with several measures of music, including rests and notes.

Handwritten musical notation for a piano accompaniment, consisting of two staves. The music features chords and melodic lines, with some notes marked with 'y'.

Four empty musical staves at the bottom of the page, arranged vertically.



# Trilux ou népal

*Andantino*

*Violine*  $\frac{4}{8}$  *mp* *con sordino*

*Piano*



25

30

35

40

Handwritten signature or initials in a circle with an arrow pointing to the right.



Handwritten musical notation on a single staff, showing a few measures with various accidentals and a final complex chord structure.

45

Handwritten musical notation for a piano piece, consisting of two staves (treble and bass clef) with complex rhythmic patterns and many accidentals.

Handwritten musical notation on a single staff, continuing the piece with various notes and accidentals.

50

Handwritten musical notation for a piano piece, consisting of two staves with rhythmic patterns and accidentals.

Handwritten musical notation on a single staff, showing a series of notes with various accidentals.

55

Handwritten musical notation for a piano piece, consisting of two staves with complex rhythmic patterns and many accidentals.

Handwritten musical notation on a single staff, showing a series of notes with various accidentals.

Handwritten musical notation for a piano piece, consisting of two staves with complex rhythmic patterns and many accidentals. The word "diminuendo" is written above the final measures.



Handwritten musical score, first system. It consists of a single melodic line at the top and a grand staff (treble and bass clefs) below. The tempo is marked "60". The key signature has two flats. The notation includes various notes, rests, and slurs. A dynamic marking "p" is present. The system ends with a measure marked "65".

Handwritten musical score, second system. It is a single melodic line. The tempo is marked "70". The notation includes various notes, rests, and slurs.

Handwritten musical score, third system. It consists of a single melodic line and a grand staff. The tempo is marked "70". The notation includes various notes, rests, and slurs. A dynamic marking "p" is present.

Handwritten musical score, fourth system. It is a single melodic line. The tempo is marked "75". The notation includes various notes, rests, and slurs. A dynamic marking "d.s." is present.

Handwritten musical score, fifth system. It consists of a single melodic line and a grand staff. The tempo is marked "75". The notation includes various notes, rests, and slurs. A dynamic marking "f" is present.

Handwritten musical score, sixth system. It is a single melodic line. The tempo is marked "80". The notation includes various notes, rests, and slurs.

Handwritten musical score, seventh system. It consists of a single melodic line and a grand staff. The tempo is marked "80". The notation includes various notes, rests, and slurs. A dynamic marking "f" is present.