

Concerto pour deux Violons et Orchestre

A. Shostakovich

(Kleine Partitur (Piano))

Concerto pour deux Violons et Orchestre

N. Shostakovich

Allegro giocoso (♩=138)

Orchestra

Violin I
Violin II

Handwritten musical score for strings and woodwinds, measures 510-525. The score is written in blue ink on aged paper. It features multiple staves for Violin I, Violin II, and various woodwind instruments (flutes, oboes, clarinets, bassoons, and trumpets). The music is in 2/4 time and includes complex rhythmic patterns, dynamic markings (e.g., *f*, *ff*), and articulation. Measure numbers 510, 511, 512, 513, 514, 515, 516, 517, 518, 519, 520, 521, 522, 523, 524, and 525 are clearly marked. There are also some handwritten annotations like "Tutti" and "2nd" above the staves.

10

Handwritten musical score for strings, measures 526-535. This section continues the piece with a focus on string textures. It includes staves for Violin I, Violin II, and the Cello/Double Bass. The notation shows a variety of rhythmic figures and harmonic support. Measure numbers 526, 527, 528, 529, 530, 531, 532, 533, 534, and 535 are indicated. The handwriting is consistent with the previous section.

Handwritten musical notation for the first system, featuring a treble clef, a key signature of one sharp (F#), and a 4/4 time signature. The notation includes a complex melodic line with many accidentals and a dense accompaniment with many chords and accidentals.

Handwritten musical notation for the second system, continuing the complex melodic and accompanimental lines. It includes various musical notations such as slurs, ties, and dynamic markings.

Handwritten musical notation for the third system, showing further development of the musical themes. The notation is dense with accidentals and complex rhythmic patterns.

Handwritten musical notation for the fourth system, which appears to be a new section or a different part of the piece. It includes a circled annotation "2a parte" and a measure number "20". The notation is less dense than the previous systems.

Orchestra

Handwritten musical score for orchestra, measures 1-25. The score is written in blue ink on aged paper. It consists of a grand staff with five systems of staves. The notation includes various rhythmic values, accidentals, and dynamic markings. A bracket on the left side groups the staves together. The number '25' is written at the beginning of the fifth system.

Handwritten musical score for orchestra, measures 26-30. This section continues the notation from the previous system, showing further development of the musical themes. It includes complex rhythmic patterns and harmonic structures.

30

7

Handwritten musical score for the first system, measures 30-32. It consists of three staves: a top staff with a treble clef and a key signature of one sharp (F#), a middle staff with a treble clef, and a bottom staff with a bass clef. The music features complex rhythmic patterns, including eighth and sixteenth notes, and various accidentals. A large slur covers the first two measures, and a fermata is placed over the final measure.

Handwritten musical score for the second system, measures 33-35. It consists of three staves: a top staff with a treble clef and a key signature of one sharp (F#), a middle staff with a treble clef, and a bottom staff with a bass clef. The notation continues with intricate melodic and harmonic lines, including many accidentals and slurs.

Handwritten musical score for the third system, measures 36-37. It consists of two staves labeled "Viol. (solo)" on the left. The notation is mostly rests, with a "Solo" marking and a dynamic marking of *f* (forte) above the second measure. A complex chordal structure is written in the second measure.

Handwritten musical score for the fourth system, measures 38-40. It consists of three staves: a top staff with a treble clef and a key signature of one sharp (F#), a middle staff with a treble clef, and a bottom staff with a bass clef. The music is highly complex, featuring many accidentals, slurs, and dynamic markings. A "dim." (diminuendo) marking is present in the middle staff.

Four empty musical staves at the bottom of the page, consisting of two treble clef staves and two bass clef staves.

I Viol. (felo)

II Viol. (felo)

35

I Viol.

II Viol.

I Viol.

II Viol.

40

Vcl. I
Vcl. II

Vcl. I
Vcl. II

45

Viol.
Viol.

I Viol.
II Viol.

50

I Viol.
II Viol.

Piano accompaniment.

This system contains handwritten musical notation for Violins I and II, and Piano. The Violin I part features a melodic line with various accidentals and slurs. The Violin II part provides a harmonic accompaniment. The Piano part includes chords and arpeggiated figures. A measure number '50' is written above the piano staff.

I Viol.
II Viol.

55

I Viol.
II Viol.

Piano accompaniment.

This system continues the handwritten musical notation for Violins I and II, and Piano. The Violin I part has a melodic line with slurs. The Violin II part continues its accompaniment. The Piano part features chords and arpeggiated patterns. A measure number '55' is written above the piano staff.

I Viol.
II Viol.

Handwritten musical notation for Violin I and Violin II, measures 1-3. The Violin I part starts with a whole rest, followed by a melodic line with various accidentals. The Violin II part has a more active line with many accidentals and slurs.

Handwritten musical notation for Piano accompaniment, measures 1-3. The right hand features complex chords and arpeggiated figures, while the left hand provides a bass line with some accidentals.

I Viol.
II Viol.

Handwritten musical notation for Violin I and Violin II, measures 4-6. The Violin I part continues with a melodic line, and the Violin II part has a more active line with many accidentals and slurs.

Handwritten musical notation for Piano accompaniment, measures 4-6. The right hand features complex chords and arpeggiated figures, while the left hand provides a bass line with some accidentals.

I Viol.
II Viol.

Handwritten musical notation for Violin I and Violin II, measures 7-9. The Violin I part continues with a melodic line, and the Violin II part has a more active line with many accidentals and slurs.

Handwritten musical notation for Piano accompaniment, measures 7-9. The right hand features complex chords and arpeggiated figures, while the left hand provides a bass line with some accidentals.

60

I Viol.
II Viol.

65

I Viol.
II Viol.

I Viol.
II Viol.

Handwritten musical score for the first system, measures 70-74. It features two vocal staves (Soprano and Alto) and a piano accompaniment. The music is in a key with one sharp (F#) and a common time signature. The piano part includes complex chordal textures and melodic lines. The vocal staves contain lyrics and musical notation.

70

Handwritten musical score for the second system, measures 75-79. It continues the vocal and piano parts from the first system. The piano accompaniment features a prominent melodic line in the right hand and a more rhythmic bass line. The vocal staves show further development of the melody and lyrics.

75

I Viol.
II Viol.

I Viol.
II Viol.

80

I Viol.
II Viol.

I Viol.
II Viol.

Handwritten musical notation for Violin I and Violin II, measures 80-84. The Violin I part features a melodic line with various accidentals and slurs. The Violin II part provides harmonic support with chords and intervals.

Handwritten musical notation for Piano, measures 80-84. The score includes a *rit.* (ritardando) marking and a *8va* (octave) marking. The piano accompaniment consists of dense chordal textures and moving lines in both hands.

I Viol.
II Viol.

Handwritten musical notation for Violin I and Violin II, measures 85-89. The Violin I part continues with a melodic line, while the Violin II part provides harmonic accompaniment.

Handwritten musical notation for Piano, measures 85-89. The piano accompaniment features complex chordal structures and melodic fragments in both hands.

I Viol.
II Viol.

Handwritten musical notation for Violin I and Violin II, measures 90-94. The Violin I part has a melodic line with some slurs, and the Violin II part provides harmonic support.

Handwritten musical notation for Piano, measures 90-94. The piano accompaniment includes a *rit.* marking and features dense chordal textures.

200pa

I Viol.

II Viol.

I Viol.

II Viol.

95

I Viol.

II Viol.

I Viol.

II Viol.

100

I Viol.

II Viol.

105

I Viol.

II Viol.

I Viol.

II Viol.

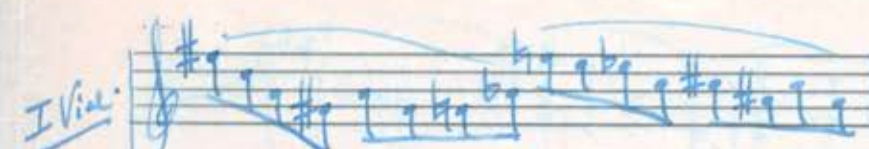
I Viol.


II Viol.

110

I Viol.

II Viol.

I Viol. 

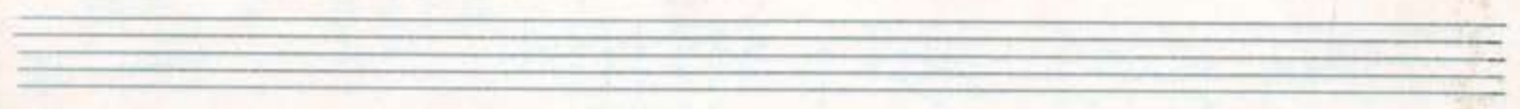
II Viol. 

115



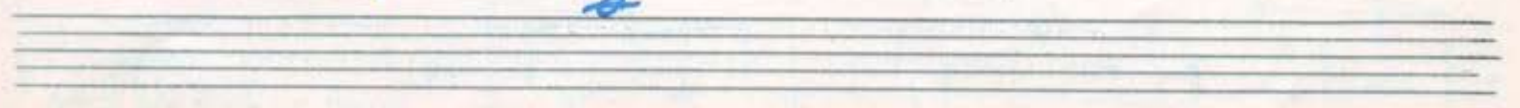
I Viol. 

II Viol. 

I Viol. 

II Viol. 

I Viol.
II Viol.

120

I Viol.
II Viol.

I Viol.
II Viol.

125

130

Handwritten musical score for measures 130-134. The notation includes a grand staff with treble and bass clefs. The music features various chords, arpeggios, and melodic lines. A 'dim.' (diminuendo) marking is present above the first staff.

Handwritten musical score for measures 135-139. The notation includes a grand staff with treble and bass clefs. The music features various chords, arpeggios, and melodic lines. A 'dim.' (diminuendo) marking is present above the first staff.

I. Viol.

II. Viol.

135

Handwritten musical score for measures 140-144. The notation includes a grand staff with treble and bass clefs. The music features various chords, arpeggios, and melodic lines. A 'dim.' (diminuendo) marking is present above the first staff.

I. Viol.

II. Viol.

Handwritten musical score for measures 145-149. The notation includes a grand staff with treble and bass clefs. The music features various chords, arpeggios, and melodic lines.

I Viol.
II Viol.

I Viol.
II Viol.

140

I Viol.
II Viol.

I Viol.
I Viol.

Handwritten musical notation for the first system, featuring two violin staves. The top staff (I Viol.) contains a series of eighth notes with various accidentals (sharps and naturals). The bottom staff (I Viol.) contains a dense pattern of notes, possibly sixteenth or thirty-second notes, with some slurs and accents.

145

Handwritten musical notation for the second system, featuring a grand staff with piano accompaniment. The right hand (treble clef) has a series of chords and single notes, while the left hand (bass clef) has a similar accompaniment. A measure is crossed out with a diagonal line.

I Viol.
I Viol.

Handwritten musical notation for the third system, featuring two violin staves. The top staff (I Viol.) has a melodic line with slurs and accents. The bottom staff (I Viol.) has rests followed by a melodic line. A measure number '150' is written below the staff.

150

Handwritten musical notation for the fourth system, featuring a grand staff with piano accompaniment. The right hand (treble clef) has a series of chords and single notes. The left hand (bass clef) has a similar accompaniment. A measure is crossed out with a diagonal line.

I Viol.
I Viol.

Handwritten musical notation for the fifth system, featuring two violin staves. The top staff (I Viol.) has a melodic line with slurs and accents. The bottom staff (I Viol.) has a melodic line with slurs and accents.

Handwritten musical notation for the sixth system, featuring a grand staff with piano accompaniment. The right hand (treble clef) has a series of chords and single notes. The left hand (bass clef) has a similar accompaniment.

I Viol.

II Viol.

I Viol.

II Viol.

155

I Viol.

II Viol.

I Viol.
II Viol.

160

I Viol.
II Viol.

I Viol.
II Viol.

Solo Quasi Cadenzoso

165

I Viol.
II Viol.

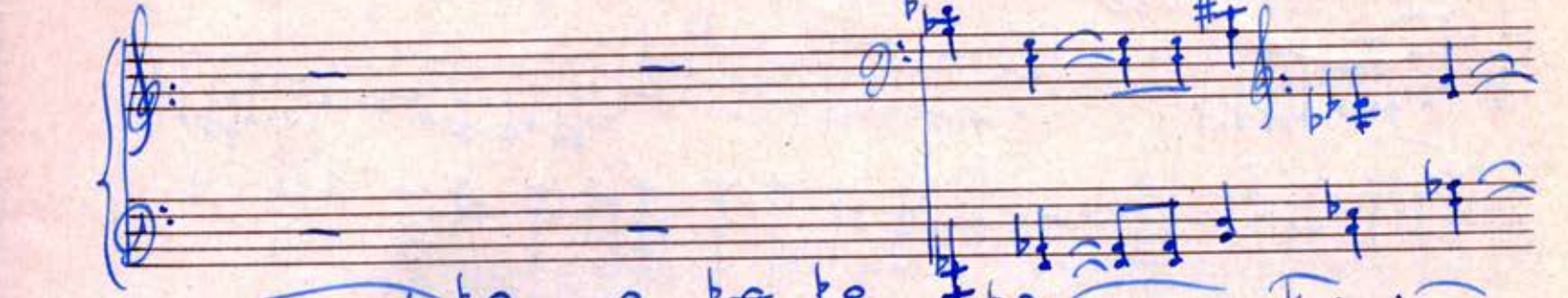
I Viol.
II Viol.

140

I Viol.
II Viol.

I Viol. 

II Viol. 



I Viol. 

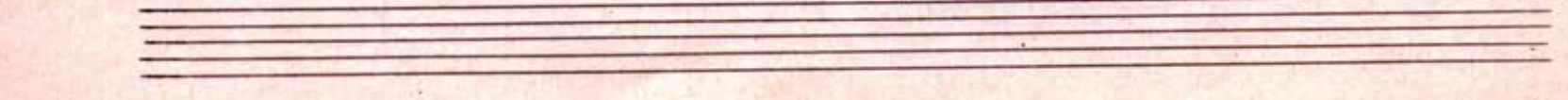
II Viol. 



I Viol. 

II Viol. 





I Viol.
II Viol.

Handwritten musical notation for Violin I and Violin II. The Violin I part features a melodic line with slurs and accents. The Violin II part provides harmonic support with chords and moving lines. The key signature has one sharp (F#).

180

Handwritten musical notation for the piano accompaniment, showing the right and left hands with complex chordal textures and arpeggiated figures.

I Viol.
II Viol.

Handwritten musical notation for Violin I and Violin II. The Violin I part continues with a melodic line, and the Violin II part provides harmonic support. The key signature has one sharp (F#).

Handwritten musical notation for the piano accompaniment, showing the right and left hands with complex chordal textures and arpeggiated figures.

Two empty musical staves.

I Viol.
II Viol.

Handwritten musical notation for Violin I and Violin II. The Violin I part features a melodic line with slurs and accents. The Violin II part provides harmonic support with chords and moving lines. The key signature has one sharp (F#).

185

Handwritten musical notation for the piano accompaniment, showing the right and left hands with complex chordal textures and arpeggiated figures.

Two empty musical staves.

I Viol.
II Viol.

I Viol.
II Viol.

190

REEXP. *Tutti*

Handwritten musical score for measures 195-199. The score is written in blue ink on aged paper. It consists of two systems of three staves each. The notation includes treble and bass clefs, various note values, rests, and accidentals. The music is written in blue ink on aged paper.

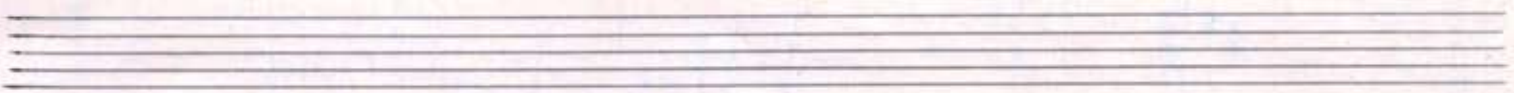
Handwritten musical score for measures 200-201. The score is written in blue ink on aged paper. It consists of two systems of two staves each. The notation includes treble and bass clefs, various note values, rests, and accidentals. The music is written in blue ink on aged paper.

Handwritten musical score for measures 202-203. The score is written in blue ink on aged paper. It consists of two systems of three staves each. The notation includes treble and bass clefs, various note values, rests, and accidentals. The music is written in blue ink on aged paper.

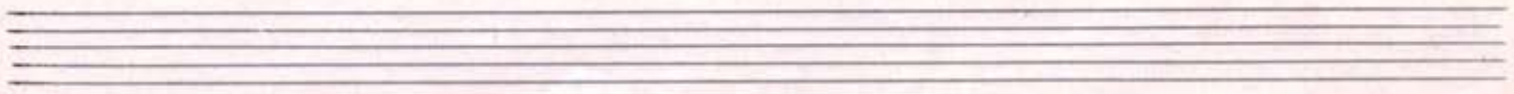
Handwritten musical notation for the first system, consisting of three staves with treble, alto, and bass clefs. The music features complex rhythmic patterns and various accidentals.

Handwritten musical notation for the second system, including a measure marked "205". It contains three staves with treble, alto, and bass clefs.

Handwritten musical notation for the third system, consisting of three staves with treble, alto, and bass clefs.



Handwritten musical notation for the fourth system, consisting of three staves with treble, alto, and bass clefs.



210

Handwritten musical notation for measures 210-211, first system. It consists of three staves: a treble clef staff with a complex melodic line, a bass clef staff with chords, and a grand staff with a bass line. The notation includes various accidentals and slurs.

Handwritten musical notation for measures 210-211, second system. It consists of three staves: a treble clef staff with a melodic line, a bass clef staff with chords, and a grand staff with a bass line. The notation includes various accidentals and slurs.

I. Viol.

II. Viol.

Handwritten musical notation for measures 210-211, third system. It shows two empty staves for Violin I and Violin II. A "Solo" marking is present on the first staff, and a circled "Cresc." marking is on the second staff.

215

Handwritten musical notation for measures 210-211, fourth system. It consists of three staves: a treble clef staff with a melodic line, a bass clef staff with chords, and a grand staff with a bass line. The notation includes various accidentals and slurs.

Four empty musical staves at the bottom of the page.

I Viol.
II Viol.

Handwritten musical notation for Violin I and Violin II. The Violin I staff features a melodic line with various ornaments and slurs. The Violin II staff contains a more rhythmic accompaniment with some slurs and dynamic markings.

Handwritten musical notation for the piano accompaniment, consisting of two staves (treble and bass clef). The right hand plays a series of chords and moving lines, while the left hand provides a harmonic foundation with chords and single notes.

I Viol.
II Viol.

Handwritten musical notation for Violin I and Violin II. The Violin I staff continues with a melodic line, and the Violin II staff provides accompaniment with some slurs and dynamic markings.

Handwritten musical notation for the piano accompaniment, consisting of two staves (treble and bass clef). The right hand plays chords and moving lines, while the left hand provides a harmonic foundation with chords and single notes.

I Viol.
II Viol.

Handwritten musical notation for Violin I and Violin II. The Violin I staff features a melodic line with various ornaments and slurs. The Violin II staff contains a more rhythmic accompaniment with some slurs and dynamic markings. The number '220' is written below the Violin II staff.

Handwritten musical notation for the piano accompaniment, consisting of two staves (treble and bass clef). The right hand plays chords and moving lines, while the left hand provides a harmonic foundation with chords and single notes.

I Viol.
II Viol.

225

I Viol.
II Viol.

I Viol.

II Viol.

I Viol.

II Viol.

2.30

(2^o Ocr.)
I Viol.

II Viol.

I Viol.

II Viol.

235

I Viol.

II Viol.

I Viol.

II Viol.

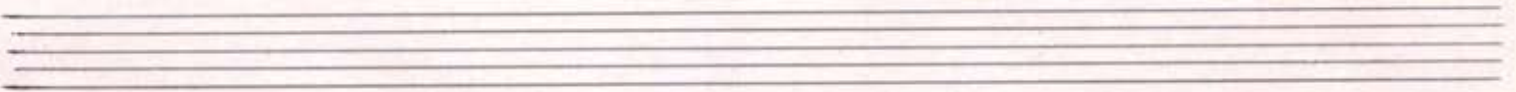
240

I Viol.

II Viol.

I Viol.

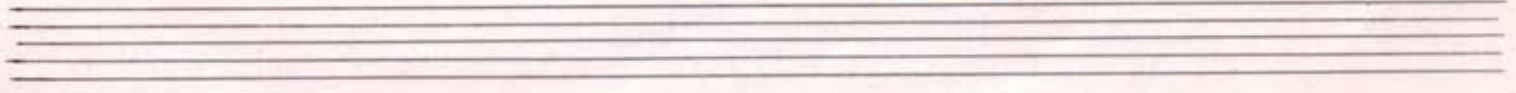
II Viol.



I Viol.

II Viol.

245



I Viol.
II Viol.

250

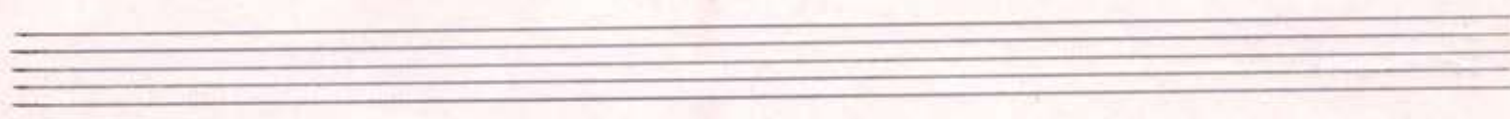
I Viol.
II Viol.

I Viol.
II Viol.

255

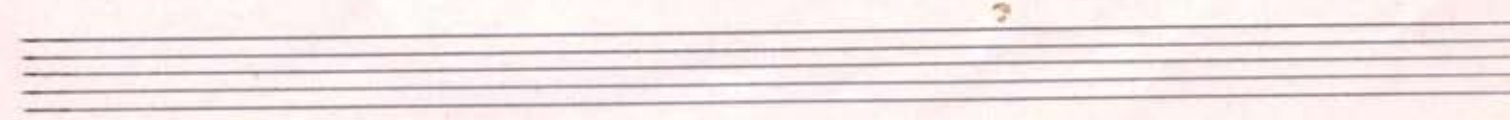
I Viol.
II Viol.

I Viol.
II Viol.



I Viol.
II Viol.

260



I Viol.
II Viol.

The first system contains two staves. The top staff is labeled 'I Viol.' and the bottom 'II Viol.'. Both staves have a treble clef and a key signature of one sharp (F#). The music consists of several measures with notes and rests, some of which are beamed together.

The piano accompaniment for the first system, consisting of two staves with treble and bass clefs. It features a complex harmonic structure with many accidentals and beamed notes.

I Viol.
II Viol.

265

The second system also has two staves for violins. The top staff is labeled 'I Viol.' and the bottom 'II Viol.'. The music continues with notes and rests. A measure number '265' is written below the second staff.

The piano accompaniment for the second system, showing two staves with treble and bass clefs. It includes various rhythmic patterns and accidentals.

I Viol.
II Viol.

The third system contains two staves for violins. The top staff is labeled 'I Viol.' and the bottom 'II Viol.'. The notation includes notes, rests, and accidentals.

The piano accompaniment for the third system, consisting of two staves with treble and bass clefs. It features a series of chords and melodic lines.

I Viol.

II Viol.

240

I Viol.

II Viol.

quasi glissando

I Viol.

II Viol.

245

I Viol.

II Viol.

I Viol.

II Viol.

I Viol.

II Viol.

I Viol.
II Viol.

dim *pp* *pp* *qua*

(Coda) *Tres vite* (♩ = 160)

I Viol.
II Viol.

290 *pp* *Tres vite*

I Viol.
II Viol.

dim

I Viol.
II Viol.

295

I Viol.
II Viol.

I Viol.
II Viol.

300

I Viol.

II Viol. *As.*

I Viol.

II Viol.

I Viol.

II Viol. *305*

I Viol.
II Viol.

Handwritten musical score for Violins I and II, and Piano. The Violin parts feature rhythmic patterns of eighth notes with stems pointing up and down. The Piano part includes chords and a melodic line in the right hand.

I Viol.
II Viol.

310

Handwritten musical score for Violins I and II, and Piano. The Violin parts continue with rhythmic patterns. The Piano part features a complex texture with many chords and a melodic line in the right hand.

I Viol.
II Viol.

Handwritten musical score for Violins I and II, and Piano. The Violin parts feature rhythmic patterns of eighth notes. The Piano part includes chords and a melodic line in the right hand.

I Viol.
II Viol.

315

I Viol.
II Viol.

I Viol.
II Viol.

320

I Viol.
II Viol.

I Viol.
II Viol.

I Viol.
II Viol.

gua-
rit-

mf
I Viol.
II Viol.

325

gva

1. Viol.

2. Viol.

(329)

Andante (♩ = 63) **II** *Violon pipol Variationen*

1. Viol.

2. Viol.

Piano

Piano

Piano

15

V IV III

Syl sc

20

III II I

sc 94 on

25

VI V IV

Solo

30

III II I

sc (2/16)

49 I. Var. (♩ = 66)

1. Viol. IV

2. Viol. c.s.

30

VII

35

VI I. Viol.

40