

Handwritten musical score for guitar, measures 85-90. The score is written on six staves. The first three staves contain melodic lines in treble and bass clefs. The last three staves contain guitar-specific notation, including chords, fingerings, and a 'ped.' (pedal) marking. The music features various accidentals and rhythmic values.

90

Handwritten musical score for guitar, measures 91-94. The score is written on six staves. It continues the melodic and harmonic development from the previous page. The notation includes complex chord structures, triplets, and a '8va' marking. The piece concludes with a final chord and a wavy line indicating a tremolo effect.

95

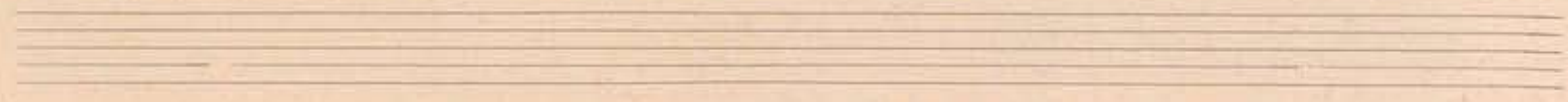
Handwritten musical score for exercise 95. It consists of two systems of three staves each. The first system includes treble and bass clefs, a key signature of two flats, and a 4/4 time signature. The second system features a treble clef, a key signature of one flat, and a 4/4 time signature. The score includes various musical notations such as notes, rests, slurs, and dynamic markings like 'f' and 'p'. A 'pizzicato' marking is present in the second system.

100

Handwritten musical score for exercise 100. It consists of two systems of three staves each. The first system includes treble and bass clefs, a key signature of one flat, and a 4/4 time signature. The second system features a treble clef, a key signature of one flat, and a 4/4 time signature. The score includes various musical notations such as notes, rests, slurs, and a triplet marking. The notation is dense and includes many accidentals.

Handwritten musical notation for the first system, consisting of three staves. The top staff has a treble clef and contains a sequence of notes with accidentals (sharps and flats) and a dynamic marking 'f/p'. The middle and bottom staves have bass clefs and contain more notes and accidentals.

Handwritten musical notation for the second system, consisting of two staves. The top staff has a treble clef and the bottom staff has a bass clef. Both staves contain complex rhythmic patterns and accidentals.



Handwritten musical notation for the third system, consisting of three staves. The top staff has a treble clef and the bottom two staves have bass clefs. The notation includes various note values and accidentals.

Handwritten musical notation for the fourth system, consisting of two staves. The top staff has a treble clef and the bottom staff has a bass clef. The notation is dense with notes and accidentals.



110

Handwritten musical score for exercise 110. The score consists of two staves: a treble clef staff and a bass clef staff. The treble staff contains a melodic line with various notes, rests, and dynamic markings. The bass staff contains a bass line with notes and rests. The music is written in a key with one flat (B-flat) and a common time signature. The score is divided into four measures.

115

Handwritten musical score for exercise 115. The score consists of two staves: a treble clef staff and a bass clef staff. The treble staff contains a melodic line with various notes, rests, and dynamic markings. The bass staff contains a bass line with notes and rests. The music is written in a key with one flat (B-flat) and a common time signature. The score is divided into four measures.

Handwritten musical score for exercise 115, continuing from the previous block. The score consists of two staves: a treble clef staff and a bass clef staff. The treble staff contains a melodic line with various notes, rests, and dynamic markings. The bass staff contains a bass line with notes and rests. The music is written in a key with one flat (B-flat) and a common time signature. The score is divided into four measures. The word "deim" is written above the treble staff, and "guabana" is written below the bass staff.

120

16)

Handwritten musical score for exercise 120, measures 1-4. The score is written on three staves (treble, alto, and bass clefs). The first staff contains chords and rests. The second staff contains a melodic line with notes and rests, including a 'pizz' (pizzicato) marking. The third staff is mostly empty. A 'rit.' (ritardando) marking is present in the first two measures. A large handwritten '3' is written across the right side of the first two staves, and a large handwritten 'H' is written across the bottom staff.

Handwritten musical score for exercise 120, measures 5-8. The score continues on three staves. The first staff contains chords and rests, with a 'rit.' marking in measure 5. The second staff contains a melodic line with notes and rests. The third staff contains a melodic line with notes and rests. A large handwritten 'f' (forte) marking is present in measure 6. A large handwritten '3' is written across the right side of the first two staves.

125

Empty musical staves for exercise 125, consisting of three staves (treble, alto, and bass clefs) with no notation.

Handwritten musical score for exercise 125, measures 1-4. The score is written on three staves. The first staff contains chords and rests. The second staff contains a melodic line with notes and rests. The third staff contains a melodic line with notes and rests. The score includes various musical notations such as slurs, ties, and triplets.

130

135

140

145

19

The first system of handwritten musical notation consists of three staves. The top staff features a complex melodic line with many accidentals and slurs. The middle staff contains dense chordal textures with many notes. The bottom staff shows a bass line with some rhythmic notation and accidentals. The system is divided into four measures.

The second system consists of two empty musical staves, one with a treble clef and one with a bass clef, divided into four measures.

The third system consists of two empty musical staves, one with a treble clef and one with a bass clef, divided into four measures.

The fourth system of handwritten musical notation consists of three staves. The top staff has a melodic line with slurs and accents. The middle staff contains dense chordal textures. The bottom staff shows a bass line with many notes and accidentals. The system is divided into four measures.

The fifth system consists of two empty musical staves, one with a treble clef and one with a bass clef, divided into four measures.

The sixth system consists of two empty musical staves, one with a treble clef and one with a bass clef, divided into four measures.

150

20)

Handwritten musical score for exercise 150. It consists of three systems of two staves each (treble and bass clef). The first system contains a treble staff with a melodic line and a bass staff with a bass line. The second system continues the piece with similar notation. The third system concludes the exercise with a final chord. The notation includes various note values, accidentals, and fingerings.

155

Handwritten musical score for exercise 155. It consists of three systems of two staves each (treble and bass clef). The first system features a treble staff with a melodic line and a bass staff with a bass line. The second system continues the piece with similar notation. The third system concludes the exercise with a final chord. The notation includes various note values, accidentals, and fingerings.

Two empty musical staves (treble and bass clef) for exercise 155, positioned below the main score.

Two empty musical staves (treble and bass clef) at the bottom of the page.

160

Handwritten musical score for exercise 160. The first system consists of three staves. The top staff is in treble clef, the middle in treble clef, and the bottom in bass clef. The music includes various notes, rests, and chords. The second system also has three staves, with the top two being empty and the bottom staff containing musical notation. The third system has two staves, with the top staff empty and the bottom staff containing musical notation. There are some handwritten annotations and markings throughout the score.

165

Handwritten musical score for exercise 165. The first system consists of three staves. The top staff is in treble clef, the middle in treble clef, and the bottom in bass clef. The music includes various notes, rests, and chords. The second system also has three staves, with the top two being empty and the bottom staff containing musical notation. The third system has two staves, with the top staff empty and the bottom staff containing musical notation. There are some handwritten annotations and markings throughout the score.

Handwritten musical score for the first system. It consists of two systems of two staves each. The top system includes a treble clef staff with a 4/4 time signature and a bass clef staff. The music features complex rhythmic patterns with triplets and sixteenth notes. The second system continues with similar complexity, including a 'pizz' (pizzicato) marking and various fingerings (1, 2, 3, 4, 5, 6). The notation is dense and includes many accidentals.

170

Handwritten musical score for the second system, starting with a red box containing the number '170'. It consists of two systems of two staves each. The top system includes a treble clef staff and a bass clef staff. The music features complex rhythmic patterns with triplets and sixteenth notes. The second system continues with similar complexity, including a 'gva' (grace) marking and various fingerings (1, 2, 3, 4, 5, 6). The notation is dense and includes many accidentals.

175

Handwritten musical notation for exercise 175, measures 1-3. The notation is on three staves: two treble clefs and one bass clef. The first two staves are mostly empty, with some notes in the third measure. The third staff contains a sequence of notes in the third measure.

Handwritten musical notation for exercise 175, measures 4-6. The notation is on two staves: a treble clef and a bass clef. It features complex chordal textures with many notes, including triplets and slurs. The key signature has one sharp (F#).

180

Handwritten musical notation for exercise 180, measures 1-3. The notation is on three staves: two treble clefs and one bass clef. The first two staves have some notes in the first measure, while the rest of the first two staves are empty. The third staff contains a sequence of notes across all three measures.

Handwritten musical notation for exercise 180, measures 4-6. The notation is on two staves: a treble clef and a bass clef. It features complex chordal textures with many notes, including triplets and slurs. The key signature has one sharp (F#).

185

190

Handwritten musical score for exercise 190. The score is written on two systems of staves. The first system consists of two staves, likely representing guitar and piano accompaniment. The guitar part features chords and rhythmic patterns, while the piano part has a simple accompaniment. The second system is more complex, with multiple staves showing intricate melodic lines and chords for both instruments. The notation includes various musical symbols such as notes, rests, accidentals, and dynamic markings.

195

Handwritten musical score for exercise 195. The score is written on two systems of staves. The first system consists of two staves, likely representing guitar and piano accompaniment. The guitar part features chords and rhythmic patterns, while the piano part has a simple accompaniment. The second system is more complex, with multiple staves showing intricate melodic lines and chords for both instruments. The notation includes various musical symbols such as notes, rests, accidentals, and dynamic markings.

Handwritten musical score for the first system. It consists of two systems of staves. The first system has a treble staff with a key signature of one flat and a common time signature. It contains several chords and a triplet of eighth notes. A dashed line with the word "cresc" is written below the staff. The second system continues with more chords and a triplet. A large handwritten "H" is written across the middle of the system. The bass staff contains a few notes and rests.

200

Handwritten musical score for the second system. It consists of two systems of staves. The first system has a treble staff with a key signature of one flat and a common time signature. It contains several chords and a triplet of eighth notes. A dashed line with the word "gua" is written above the staff. The second system continues with more chords and a triplet. The bass staff contains a few notes and rests.

Handwritten musical notation for the first system, consisting of three staves. The top staff has a treble clef and contains a few notes and rests. The middle and bottom staves are mostly empty with some faint markings.

Handwritten musical notation for the second system, consisting of two staves. The top staff has a treble clef and contains complex rhythmic patterns with triplets and sixteenth notes. The bottom staff has a bass clef and contains complex rhythmic patterns with sixteenth notes and slurs.

Two empty musical staves.

Handwritten musical notation for the third system, consisting of three staves. The top staff has a treble clef and contains a few notes and rests. The middle and bottom staves are mostly empty with some faint markings.

Handwritten musical notation for the fourth system, consisting of two staves. The top staff has a treble clef and contains complex rhythmic patterns with triplets and sixteenth notes. The bottom staff has a bass clef and contains complex rhythmic patterns with sixteenth notes and slurs.

Two empty musical staves.

The first system of the handwritten musical score consists of two staves. The upper staff is in a treble clef and contains complex chordal structures, including triplets and chords with accidentals (sharps and flats). The lower staff is in a bass clef and features a melodic line with slurs and fingering numbers (5, 6, 8, 9, 6, 5, 6). The music is written in a key with one flat and a 3/4 time signature.

The second system of the handwritten musical score also consists of two staves. The upper staff continues the complex chordal and melodic notation from the first system, including a triplet and dynamic markings such as *sf* (sforzando). The lower staff continues the melodic line with slurs and fingering numbers (8, 5, 5, 5, 5, 5, 5). The notation is consistent with the first system, maintaining the same key and time signature.

215

220

Handwritten musical notation for the first system, consisting of three staves (treble, alto, and bass clefs) with rests.

Handwritten musical notation for the second system, featuring complex chordal structures and a large 'f' dynamic marking. The notation includes various accidentals and slurs.

225

Handwritten musical notation for the third system, showing melodic lines and chordal accompaniment. It includes various accidentals and slurs.

Handwritten musical notation for the fourth system, featuring complex chordal structures. It includes various accidentals and slurs.

Handwritten musical notation for the fifth system, consisting of three staves with rests.

230

Handwritten musical score for exercise 230. It consists of three staves: Treble, Alto, and Bass. The piece begins with a treble clef and a key signature of one flat (B-flat). The notation includes various note values, rests, and dynamic markings such as 'p' (piano) and 'dim' (diminuendo). The score is divided into measures by vertical bar lines.

Two empty musical staves, one with a treble clef and one with a bass clef, positioned below the main score for exercise 230.

235

Handwritten musical score for exercise 235. It consists of three staves: Treble, Alto, and Bass. The piece begins with a treble clef and a key signature of one flat (B-flat). The notation includes various note values, rests, and dynamic markings such as 'p' (piano) and 'dim' (diminuendo). The score is divided into measures by vertical bar lines.

Two empty musical staves, one with a treble clef and one with a bass clef, positioned below the main score for exercise 235.

240

Handwritten musical score for exercise 240. The first system consists of three staves. The top staff is in treble clef, the middle in treble clef, and the bottom in bass clef. It contains various musical notations including notes, rests, and accidentals. The second system also has three staves, with the top staff in treble clef and the bottom in bass clef. It features a melodic line in the top staff and a bass line in the bottom staff, with some triplets and slurs. The third system continues the piece with similar notation.

245

Handwritten musical score for exercise 245. The first system consists of three staves. The top staff is in treble clef, the middle in treble clef, and the bottom in bass clef. It contains various musical notations including notes, rests, and accidentals. The second system also has three staves, with the top staff in treble clef and the bottom in bass clef. It features a melodic line in the top staff and a bass line in the bottom staff, with some triplets and slurs. The third system continues the piece with similar notation.

Handwritten musical notation for the first system. It consists of three staves: a treble staff, a middle staff, and a bass staff. The treble staff contains several measures of music with notes, rests, and dynamic markings like *mf*. The middle and bass staves also contain musical notation, including notes and rests. There are some large, stylized markings or symbols between the staves.

Handwritten musical notation for the second system. It continues with three staves. The treble staff features a triplet of notes and various other notes. The middle and bass staves contain more complex rhythmic patterns and notes. There are some large, stylized markings or symbols between the staves.

250

Handwritten musical notation for the third system. It consists of three staves. The treble staff has notes with stems and some rests. The middle and bass staves contain musical notation, including notes and rests. There are some large, stylized markings or symbols between the staves.

Handwritten musical notation for the fourth system. It consists of two staves: a treble staff and a bass staff. The treble staff has notes with stems and some rests. The bass staff contains musical notation, including notes and rests. There are some large, stylized markings or symbols between the staves.

Two empty musical staves at the bottom of the page, consisting of a treble staff and a bass staff.

255

Handwritten musical notation for the first system, consisting of three staves. The top staff has a treble clef and a key signature of one sharp (F#). The middle staff has a treble clef and a key signature of one sharp. The bottom staff has a bass clef and a key signature of one sharp. The notation includes rests, eighth notes, and quarter notes with various accidentals.

Handwritten musical notation for the second system, consisting of two staves. The top staff has a treble clef and a key signature of one sharp. The bottom staff has a treble clef and a key signature of one sharp. The notation includes eighth notes, quarter notes, and chords. A 'gva' marking is present above the top staff, and 'R.H.' is written above the bottom staff.

Handwritten musical notation for the third system, consisting of three staves. The top staff has a treble clef and a key signature of one sharp. The middle staff has a treble clef and a key signature of one sharp. The bottom staff has a bass clef and a key signature of one sharp. The notation includes chords, eighth notes, and quarter notes.

Handwritten musical notation for the fourth system, consisting of two staves. The top staff has a treble clef and a key signature of one sharp. The bottom staff has a bass clef and a key signature of one sharp. The notation includes chords, eighth notes, and quarter notes.

265

Handwritten musical score for exercise 265. It consists of three staves. The top staff is in treble clef with a key signature of two sharps (F# and C#). The middle staff is in bass clef with a key signature of two flats (Bb and Eb). The bottom staff is in bass clef with a key signature of one sharp (F#). The notation includes various chords, some with accidentals, and melodic lines with slurs and ties. There are some handwritten annotations and corrections throughout the piece.

Two empty musical staves, one in treble clef and one in bass clef, positioned below the main score for exercise 265.

270

Handwritten musical score for exercise 270. It consists of three staves. The top staff is in treble clef with a key signature of two sharps (F# and C#). The middle staff is in bass clef with a key signature of two flats (Bb and Eb). The bottom staff is in bass clef with a key signature of one sharp (F#). The notation includes triplets, slurs, and dynamic markings such as *pp* and *ff*. There are also some handwritten annotations and corrections.

Two empty musical staves, one in treble clef and one in bass clef, positioned below the main score for exercise 270.

Two empty musical staves at the bottom of the page, one in treble clef and one in bass clef.

275

38

280

A system of three empty musical staves, consisting of two treble clefs and one bass clef, with four measures each.

Handwritten musical notation for the second system. The top staff (treble clef) contains a sequence of chords and melodic fragments. The bottom staff (bass clef) features a complex rhythmic pattern with triplets and sixteenth notes. The notation includes various accidentals and dynamic markings.

A system of three empty musical staves, consisting of two treble clefs and one bass clef.

Handwritten musical notation for the third system. The top staff contains a large, stylized flourish or symbol. The bottom staff contains a large, stylized flourish or symbol. The notation is highly decorative and appears to be a form of shorthand or a specific notation system.

Handwritten musical notation for the fourth system. The top staff contains a sequence of chords and melodic fragments. The bottom staff features a complex rhythmic pattern with triplets and sixteenth notes. The notation includes various accidentals and dynamic markings.

A system of three empty musical staves, consisting of two treble clefs and one bass clef.

Two systems of empty musical staves. The first system consists of three staves (treble, alto, and bass clefs). The second system also consists of three empty staves.

Handwritten musical notation for the first system. The top staff (treble clef) contains a melodic line with eighth and sixteenth notes, including slurs and accents. The bottom staff (bass clef) contains a bass line with chords and moving lines, also featuring slurs and accents. The notation is dense and includes various accidentals.

Two systems of empty musical staves. The first system consists of three staves (treble, alto, and bass clefs). The second system also consists of three empty staves.

Handwritten musical notation for the second system. The top staff (treble clef) contains a melodic line with chords and slurs. The middle staff (alto clef) contains a line of notes with slurs. The bottom staff (bass clef) contains a bass line with chords and slurs. The notation includes various accidentals and dynamic markings.

295

300

Three empty musical staves, likely for vocal or instrumental parts, positioned at the top of the page.

gua

Handwritten musical notation for guitar. It features a series of chords in the first measure, followed by melodic lines in the second and third measures. The notation includes various accidentals (sharps, flats, naturals) and rhythmic markings.

305

Musical notation for the first system of the piece '305'. It consists of three staves. The top staff has a melodic line starting in the third measure with a forte dynamic marking. The middle staff has a long note with a forte dynamic marking. The bottom staff has a melodic line starting in the third measure with a forte dynamic marking.

Musical notation for the second system of the piece '305'. It consists of two staves. The top staff has a melodic line with various accidentals and a fermata. The bottom staff has a complex chordal accompaniment with many notes and accidentals.

310

Handwritten musical score for exercise 310. It consists of three staves. The top staff is in treble clef and contains a melodic line with various notes and accidentals, including a triplet of eighth notes. The middle staff is in bass clef and contains a bass line with notes and rests. The bottom staff is in bass clef and contains a bass line with notes and rests. The music is written in a key with one flat and a 2/4 time signature.

Two empty musical staves, one in treble clef and one in bass clef, positioned below the main score for exercise 310.

315

Handwritten musical score for exercise 315. It consists of three staves. The top staff is in treble clef and contains a melodic line with complex notation, including triplets, slurs, and dynamic markings like 'p' and 'f'. The middle staff is in bass clef and contains a bass line with notes and rests. The bottom staff is in bass clef and contains a bass line with notes and rests. The music is written in a key with one flat and a 2/4 time signature.

Two empty musical staves, one in treble clef and one in bass clef, positioned below the main score for exercise 315.

Two empty musical staves at the bottom of the page, one in treble clef and one in bass clef.

Handwritten musical score for guitar, consisting of three systems of staves. The first system includes a treble clef staff with a *gua* marking and a *ff* dynamic marking, a middle treble clef staff, and a bass clef staff. The second system consists of two empty staves. The third system consists of two empty staves with a treble clef at the end.

320

Handwritten musical score for guitar, consisting of two systems of staves. The first system includes a treble clef staff with a *piss* marking, a middle treble clef staff, and a bass clef staff. The second system includes a treble clef staff with a *gua* marking and a *ff* dynamic marking, a middle treble clef staff, and a bass clef staff.

gua

This system contains three measures of music. The top staff is in treble clef with a key signature of one sharp (F#). The bottom staff is in bass clef. The music consists of chords and some melodic fragments, with various accidentals and dynamics markings.

gua

This system contains three measures of music. The top staff is in treble clef with a key signature of one flat (Bb). The bottom staff is in bass clef. The music is more complex, featuring many chords, some with triplets and sixteenth notes, and various accidentals.

This system contains three measures of music. The top staff is in treble clef with a key signature of one flat (Bb). The bottom staff is in bass clef. The music features melodic lines in the upper voice and chords in the lower voice, with various accidentals and dynamics markings.

gua

This system contains three measures of music. The top staff is in treble clef with a key signature of one flat (Bb). The bottom staff is in bass clef. The music is highly complex, featuring many chords, some with triplets and sixteenth notes, and various accidentals.

Handwritten musical score for the first system, consisting of five staves. The top staff has a "gua" annotation above it. The music includes various notes, rests, and chord symbols. The notation is dense, with many beamed notes and complex rhythmic patterns.

Handwritten musical score for the second system, consisting of three staves. The notation continues with complex rhythmic and melodic lines, featuring many beamed notes and rests.

Handwritten musical score for the third system, consisting of two staves. The notation includes many beamed notes and rests, continuing the complex rhythmic and melodic patterns from the previous systems.

335

42/

Handwritten musical score for system 335, measures 1-5. The system consists of three staves. The top staff is in treble clef with a key signature of one sharp (F#) and contains rests for the first three measures, followed by a half note G4, a quarter note A4, and a quarter note B4. The middle staff is in treble clef with a key signature of one sharp and contains a half note G4, a quarter note A4, a quarter note B4, a quarter rest, a quarter note G4, a quarter note F#4, a quarter note E4, and a quarter note D4. The bottom staff is in bass clef and contains rests for all five measures.

Handwritten musical score for system 335, measures 6-9. The system consists of two staves. The top staff is in treble clef with a key signature of one sharp and contains rests for measures 6 and 7, followed by a half note G4, a quarter note A4, and a quarter note B4. The word "sostenuto" is written below the first measure. The bottom staff is in bass clef with a key signature of one sharp and contains a half note G4, a quarter note A4, a quarter note B4, a quarter note G4, a quarter note F#4, a quarter note E4, and a quarter note D4.

340

Handwritten musical score for system 340, measures 1-4. The system consists of four staves. The top two staves are in treble clef and contain rests for all four measures. The third staff is in treble clef with a key signature of one sharp and contains a half note G4, a quarter note A4, a quarter note B4, a quarter note G4, a quarter note F#4, a quarter note E4, and a quarter note D4. The word "f" is written below the first measure. The bottom staff is in bass clef with a key signature of one sharp and contains a half note G4, a quarter note A4, a quarter note B4, a quarter note G4, a quarter note F#4, a quarter note E4, and a quarter note D4.

Handwritten musical notation for the first system, consisting of three staves. The top two staves are in treble clef with a key signature of one flat (B-flat major or D minor). The bottom staff is in bass clef. The notation includes various chords, melodic lines, and dynamic markings such as 'f' and 'p'.

Handwritten musical notation for the second system, consisting of two staves. The top staff is in treble clef and the bottom staff is in bass clef. The notation features a complex melodic line in the treble and a more rhythmic accompaniment in the bass, including a triplet in the final measure.

A set of empty musical staves.

Handwritten musical notation for the third system, consisting of three staves. The top staff is in treble clef and is mostly empty. The middle and bottom staves are in bass clef and contain rhythmic notation with some notes.

Handwritten musical notation for the fourth system, consisting of two staves. The top staff is in treble clef and the bottom staff is in bass clef. The notation includes a melodic line with some notes marked with '(h)' and a bass line with various chords and notes.

A set of empty musical staves.

350

Handwritten musical score for exercise 350, first system. It consists of three staves. The top staff has a treble clef and a key signature of one flat. The middle staff has a treble clef. The bottom staff has a bass clef. The music begins with a rest in the first measure, followed by a dynamic marking 'pizz f' and a series of notes in the second and third measures.

Handwritten musical score for exercise 350, second system. It consists of three staves. The top staff has a treble clef and a key signature of one flat. The middle staff has a treble clef. The bottom staff has a bass clef. The music continues with various notes and rests across four measures.

355

Handwritten musical score for exercise 355, first system. It consists of three staves. The top staff has a treble clef and a key signature of one flat. The middle staff has a treble clef. The bottom staff has a bass clef. The music begins with a rest in the first measure, followed by notes in the second and third measures.

Fine

Handwritten musical score for exercise 355, second system. It consists of three staves. The top staff has a treble clef and a key signature of one flat. The middle staff has a treble clef. The bottom staff has a bass clef. The music continues with various notes and rests across four measures.

ΔΕΥΤΕΡΟ ΜΕΡΟΣ

ZWEITER SATZ

Andantino

5

10

15

20

Handwritten musical notation for measures 20-24. The system consists of three staves. The top two staves are in treble clef, and the bottom staff is in bass clef. The music includes various notes, rests, and accidentals (sharps, flats, naturals). There are some markings like 'h' and 'k' above notes, possibly indicating fingerings or specific techniques. The notation is somewhat sketchy and appears to be a working draft.

Handwritten musical notation for measures 25-29. The system consists of two staves, both in treble clef. The music is more complex than the previous section, featuring many beamed notes, chords, and dynamic markings like 'p' (piano) and 'f' (forte). There are also some markings like 'h' and 'k' above notes. The notation is dense and appears to be a working draft.

25

30

Handwritten musical notation for measures 30-34. The system consists of three staves. The top two staves are in treble clef, and the bottom staff is in bass clef. The music includes various notes, rests, and accidentals. There are some markings like 'h' and 'k' above notes, possibly indicating fingerings or specific techniques. The notation is somewhat sketchy and appears to be a working draft.

Handwritten musical notation for measures 35-39. The system consists of two staves, both in treble clef. The music is more complex than the previous section, featuring many beamed notes, chords, and dynamic markings like 'p' (piano) and 'f' (forte). There are also some markings like 'h' and 'k' above notes. The notation is dense and appears to be a working draft.

Four empty musical staves at the bottom of the page, consisting of two treble clef staves and two bass clef staves.

35

Handwritten musical score for measures 35-40. The score is written on three staves. The top staff uses a treble clef and a key signature of one flat (B-flat). The middle and bottom staves use a bass clef. The music features various rhythmic values, including eighth and sixteenth notes, and rests. There are several accidentals (sharps and flats) throughout. The notation includes slurs, ties, and dynamic markings such as 'p' (piano) and 'f' (forte). The word 'dim.' (diminuendo) is written in the first and second measures of the first system. The score concludes with a double bar line and repeat dots.

40

Handwritten musical score for measures 41-45. The score is written on three staves. The top staff uses a treble clef and a key signature of one flat (B-flat). The middle and bottom staves use a bass clef. The music features various rhythmic values, including eighth and sixteenth notes, and rests. There are several accidentals (sharps and flats) throughout. The notation includes slurs, ties, and dynamic markings such as 'p' (piano) and 'f' (forte). The score concludes with a double bar line and repeat dots.

45

Handwritten musical score for exercise 45, measures 1-5. The score is written on three staves (treble, alto, and bass clefs). It features various musical notations including notes, rests, and accidentals. The first measure contains a complex chordal structure in the treble clef. The second measure has a slash indicating a repeat or continuation. The third and fourth measures show melodic lines in the treble clef and bass clef. The fifth measure concludes with a final chord in the treble clef.

Handwritten musical score for exercise 45, measures 6-10. This section continues the piece with more complex chordal textures and melodic lines across the three staves. The notation includes many accidentals and dynamic markings such as *pp* and *ff*. The sixth measure shows a dense chordal texture in the treble clef. The seventh and eighth measures feature melodic lines in the treble clef. The ninth and tenth measures show a continuation of the melodic and harmonic material.

50

Handwritten musical score for exercise 50, measures 1-5. The score is written on three staves. The first measure shows a complex chordal structure in the treble clef. The second measure has a slash. The third and fourth measures show melodic lines in the treble clef and bass clef. The fifth measure concludes with a final chord in the treble clef.

Handwritten musical score for exercise 50, measures 6-10. This section continues the piece with more complex chordal textures and melodic lines across the three staves. The notation includes many accidentals and dynamic markings such as *ff*. The sixth measure shows a dense chordal texture in the treble clef. The seventh and eighth measures feature melodic lines in the treble clef. The ninth and tenth measures show a continuation of the melodic and harmonic material.

55

Handwritten musical score for system 55. The system consists of two systems of staves. The first system has a treble staff with a melodic line and a bass staff with a bass line. The second system has a treble staff with a complex chordal texture and a bass staff with a bass line. The notation includes various accidentals (sharps, flats, naturals), slurs, and dynamic markings such as *mf* and *cresc.*

60

65

Handwritten musical score for system 60. The system consists of two systems of staves. The first system has a treble staff with a melodic line and a bass staff with a bass line. The notation includes various accidentals, slurs, and dynamic markings such as *cresc.* and *esp.*

Empty musical staves for system 65, showing treble and bass staves with no notation.

Empty musical staves at the bottom of the page.

70

Handwritten musical score for system 70, measures 1-4. The system consists of three staves. The top staff is in treble clef, the middle in alto clef, and the bottom in bass clef. The music features complex chordal textures with many accidentals (sharps, flats, naturals) and some dynamic markings like accents (>). The notation is dense and somewhat messy, with some ink bleed-through from the reverse side of the page.

Handwritten musical score for system 70, measures 5-8. The system consists of three staves. The top staff is in treble clef, the middle in alto clef, and the bottom in bass clef. The music continues with complex chordal textures and melodic lines. There are some slurs and phrasing marks. The notation is dense and somewhat messy, with some ink bleed-through from the reverse side of the page.

75

Handwritten musical score for system 75, measures 1-4. The system consists of three staves. The top staff is in treble clef, the middle in alto clef, and the bottom in bass clef. The music features complex chordal textures with many accidentals (sharps, flats, naturals) and some dynamic markings like accents (>). The notation is dense and somewhat messy, with some ink bleed-through from the reverse side of the page.

Handwritten musical score for system 75, measures 5-8. The system consists of three staves. The top staff is in treble clef, the middle in alto clef, and the bottom in bass clef. The music continues with complex chordal textures and melodic lines. There are some slurs and phrasing marks. The notation is dense and somewhat messy, with some ink bleed-through from the reverse side of the page.

80

Handwritten musical notation for system 80, measures 1-4. The system consists of three staves. The top staff is in treble clef with a key signature of one sharp (F#) and a 9/8 time signature. It contains a melodic line with eighth and sixteenth notes, including a triplet of eighth notes in measure 3. The middle staff is in treble clef and contains a bass line with chords and rests. The bottom staff is in bass clef and contains a bass line with chords and rests. A large handwritten '2' is written in the middle of the system, and a large handwritten '4' is written in the bottom right corner of the system.

Handwritten musical notation for system 80, measures 5-8. The system consists of three staves. The top staff is in treble clef with a key signature of one sharp (F#) and a 9/8 time signature. It contains a melodic line with eighth and sixteenth notes, including a triplet of eighth notes in measure 8. The middle staff is in treble clef and contains a bass line with chords and rests. The bottom staff is in bass clef and contains a bass line with chords and rests. A large handwritten '2' is written in the middle of the system, and a large handwritten '4' is written in the bottom right corner of the system.

85

Handwritten musical notation for system 85, measures 1-4. The system consists of three staves. The top staff is in treble clef with a key signature of one sharp (F#) and a 9/8 time signature. It contains a melodic line with eighth and sixteenth notes, including a triplet of eighth notes in measure 3. The middle staff is in treble clef and contains a bass line with chords and rests. The bottom staff is in bass clef and contains a bass line with chords and rests. A large handwritten '2' is written in the middle of the system, and a large handwritten '4' is written in the bottom right corner of the system.

Handwritten musical notation for system 85, measures 5-8. The system consists of three staves. The top staff is in treble clef with a key signature of one sharp (F#) and a 9/8 time signature. It contains a melodic line with eighth and sixteenth notes, including a triplet of eighth notes in measure 8. The middle staff is in treble clef and contains a bass line with chords and rests. The bottom staff is in bass clef and contains a bass line with chords and rests. A large handwritten '2' is written in the middle of the system, and a large handwritten '4' is written in the bottom right corner of the system.

90

58

Handwritten musical score for measures 90-94. The system consists of three staves. The top staff is in treble clef with a key signature of one sharp (F#) and a 4/4 time signature. The middle staff is in treble clef with a key signature of one sharp (F#). The bottom staff is in bass clef with a key signature of one sharp (F#). Measures 90-94 are mostly rests, with some notes in measure 94. A dashed box highlights the notes in measure 94 across all three staves.

Handwritten musical score for measures 95-99. The system consists of three staves. The top staff is in treble clef with a key signature of one sharp (F#) and a 4/4 time signature. The middle staff is in treble clef with a key signature of one sharp (F#). The bottom staff is in bass clef with a key signature of one sharp (F#). Measures 95-99 contain dense musical notation with many notes, slurs, and dynamic markings such as *p* and *pp*. A dashed box highlights the notes in measure 99 across all three staves.

95

Handwritten musical score for measures 100-104. The system consists of three staves. The top staff is in treble clef with a key signature of one sharp (F#) and a 4/4 time signature. The middle staff is in treble clef with a key signature of one sharp (F#). The bottom staff is in bass clef with a key signature of one sharp (F#). Measures 100-104 contain musical notation with notes and rests. A dashed box highlights the notes in measure 104 across all three staves.

Handwritten musical score for measures 105-109. The system consists of three staves. The top staff is in treble clef with a key signature of one sharp (F#) and a 4/4 time signature. The middle staff is in treble clef with a key signature of one sharp (F#). The bottom staff is in bass clef with a key signature of one sharp (F#). Measures 105-109 contain dense musical notation with many notes, slurs, and dynamic markings such as *ff*. A dashed box highlights the notes in measure 109 across all three staves.

100

Handwritten musical score for exercise 100. The first system consists of three staves. The top staff is in treble clef with a key signature of one sharp (F#) and a 4/4 time signature. The middle and bottom staves are in bass clef. The second system continues the piece, also in 4/4 time, with a 'rit.' (ritardando) marking in the first measure of the top staff. The notation includes various rhythmic values, accidentals, and dynamic markings.

105

Handwritten musical score for exercise 105. The first system consists of three staves. The top staff is in treble clef with a key signature of one sharp (F#) and a 4/4 time signature. The middle and bottom staves are in bass clef. The second system continues the piece, also in 4/4 time, with a 'rit.' (ritardando) marking in the first measure of the top staff. The notation includes various rhythmic values, accidentals, and dynamic markings.

110

Handwritten musical score for exercise 110, measures 1-4. It features three staves with complex chordal textures and rhythmic patterns. The first two staves have treble clefs, and the third has a bass clef. The notation includes many beamed notes and rests.

Handwritten musical score for exercise 110, measures 5-8. It continues the complex textures from the previous system, with a large '8' written in the middle of the second staff. The notation is dense with notes and rests.

115

120

Handwritten musical score for exercise 115, measures 1-4. It features three staves with complex chordal textures and rhythmic patterns. The first two staves have treble clefs, and the third has a bass clef. The notation includes many beamed notes and rests.

Handwritten musical score for exercise 115, measures 5-8. It continues the complex textures from the previous system, with a large '8' written in the middle of the second staff. The notation is dense with notes and rests.

Empty musical staves at the bottom of the page.

Handwritten musical notation for the first system, consisting of three staves. The top two staves are mostly empty with some scribbles. The bottom staff contains a few notes and rests.

Handwritten musical notation for the second system, featuring complex chords, triplets, and dynamic markings like "cresc". It includes a five-fingered scale in the upper voice and a triplet in the lower voice.

125

Handwritten musical notation for the third system, consisting of three empty staves.

Handwritten musical notation for the fourth system, featuring complex chords and dynamic markings like "p" and "cresc". It shows a sequence of chords in the upper voice and corresponding bass notes in the lower voice.

Handwritten musical notation for the fifth system, consisting of three empty staves.