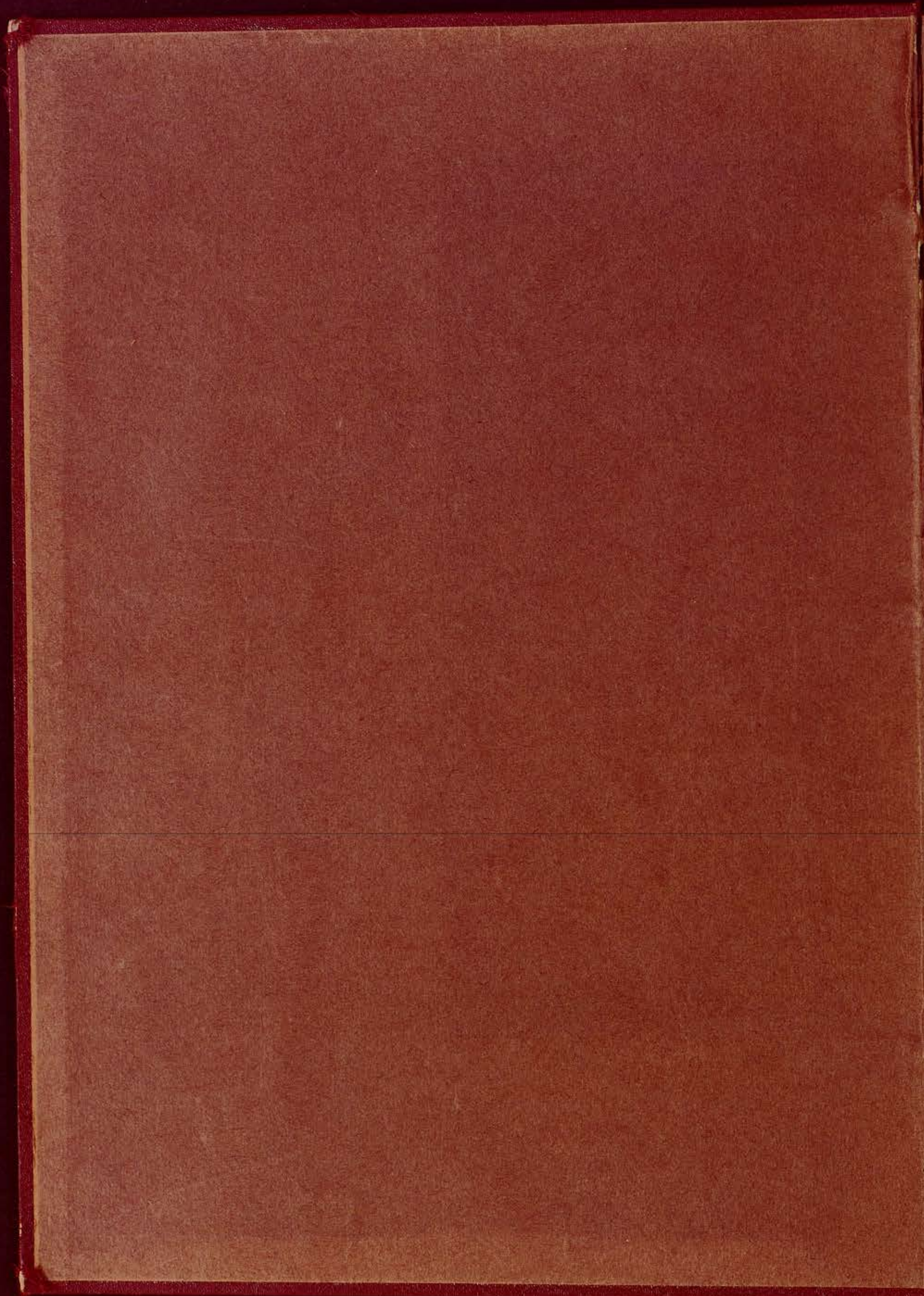
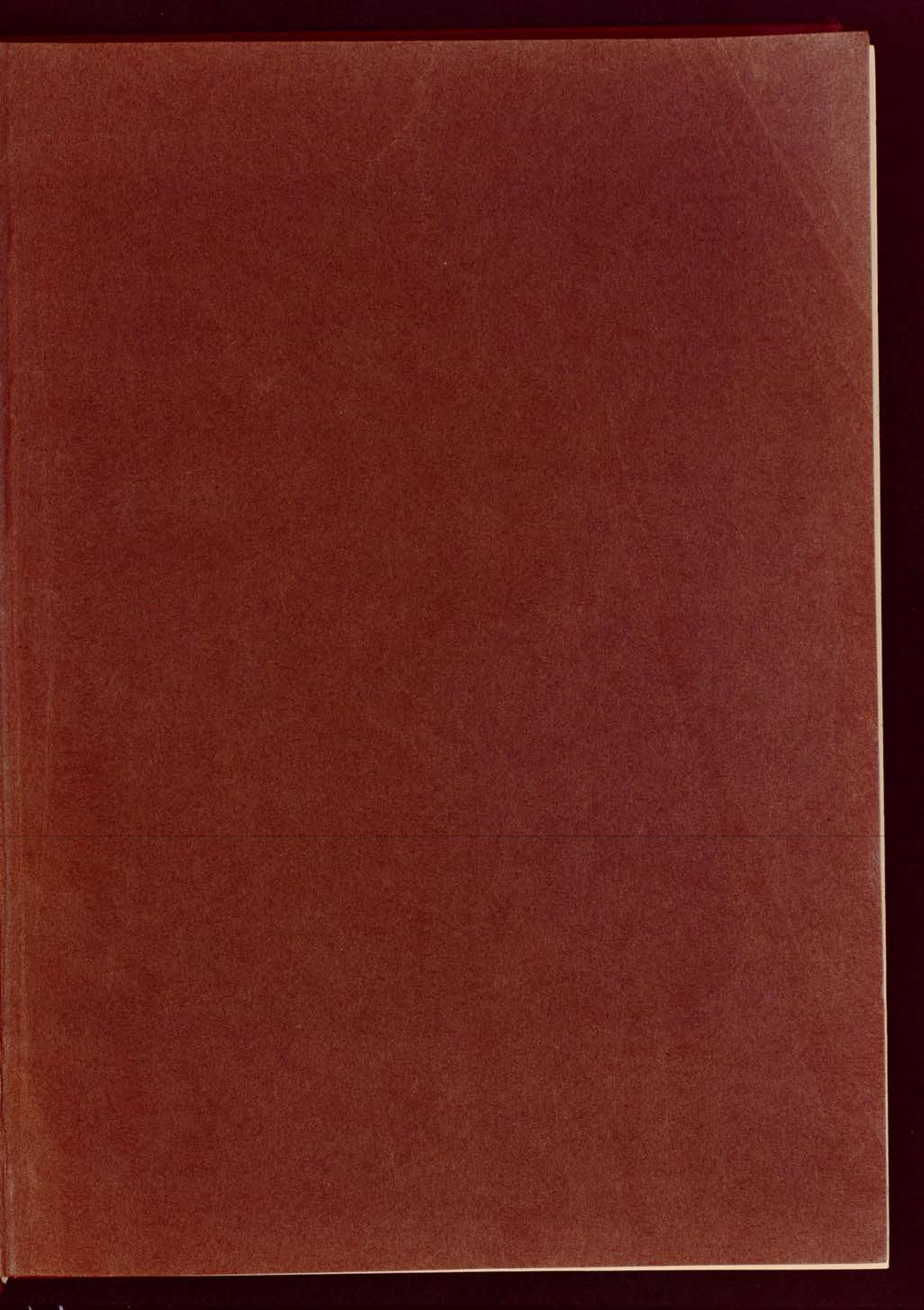
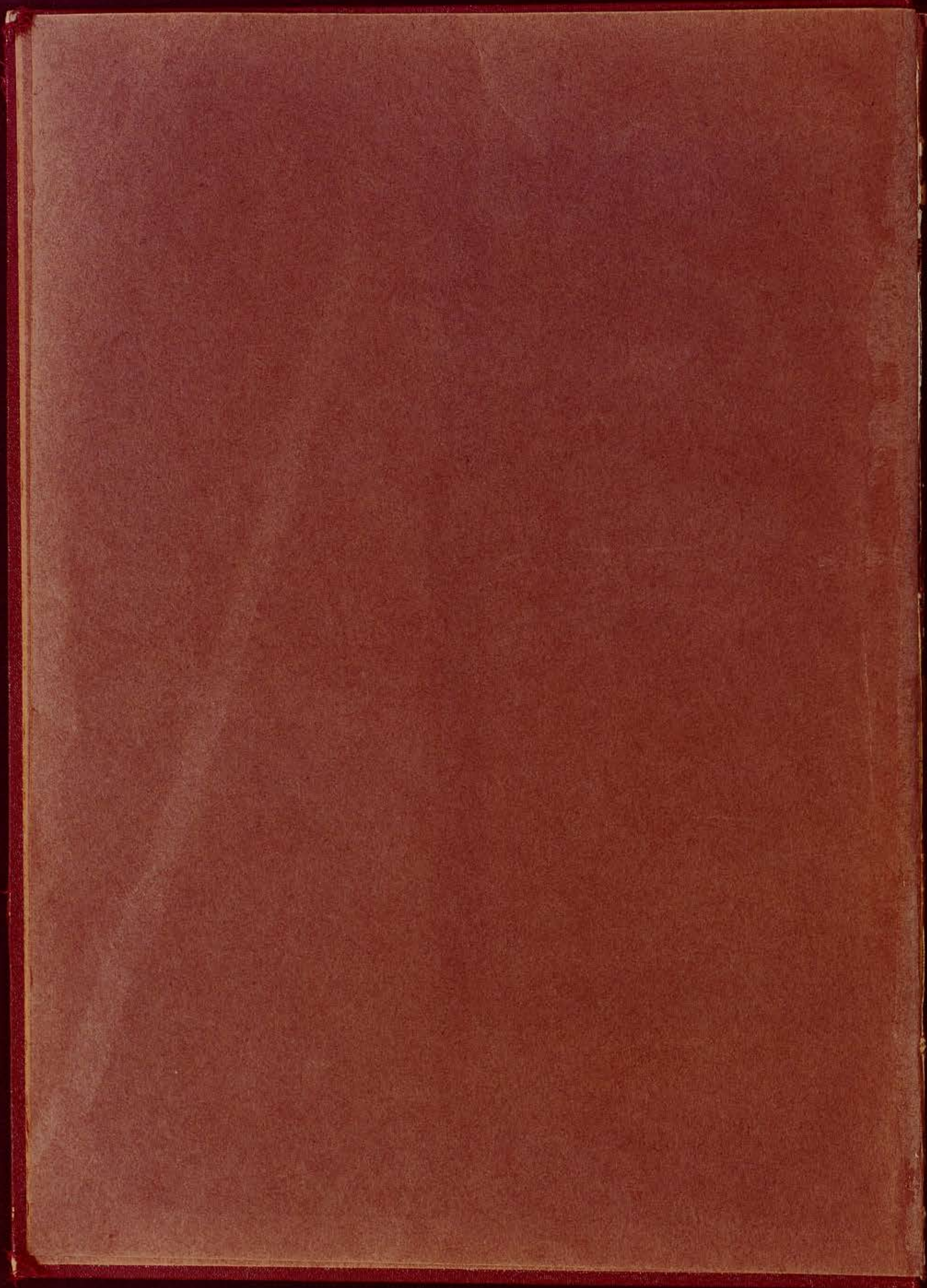


B

Ν. ΕΚΚΑΛΩΝΤΑΣ ΔΕΤΤΕΡΟ ΚΟΝΤΣΕΡΤΟ ΓΙΑ ΠΙΑΝΟ & ΟΡΧΗΣΤΡΑ







PIANO

ΔΕΥΤΕΡΟ

ΚΟΝΤΣΕΡΤΟ ΓΙΑ ΠΙΑΝΟ ΚΑΙ ΟΡΧΗΣΤΡΑ

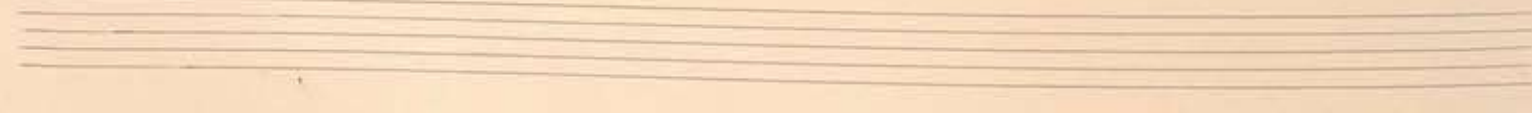
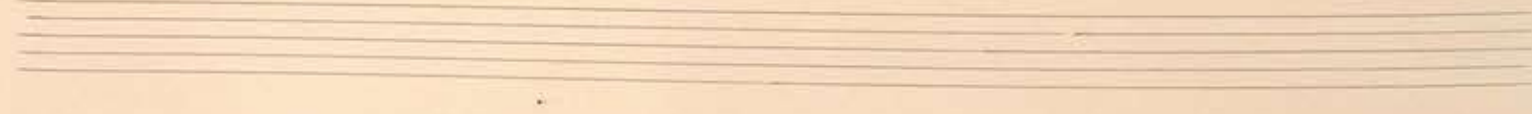
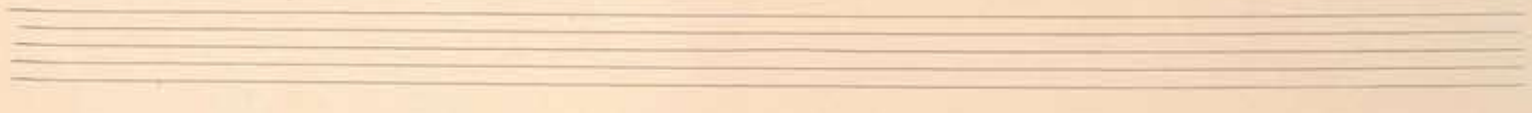
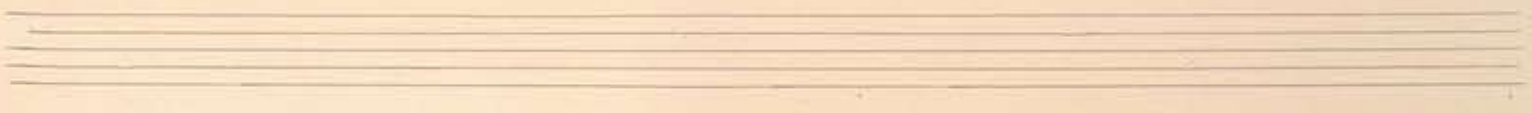
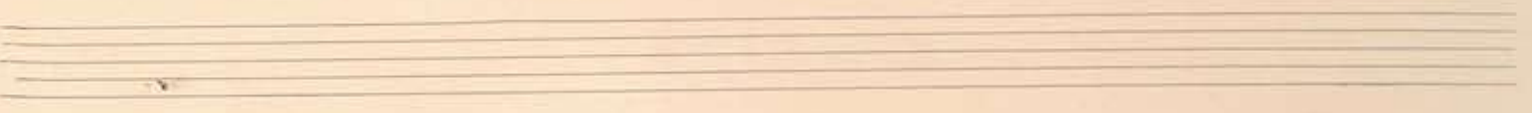
ZWEITES

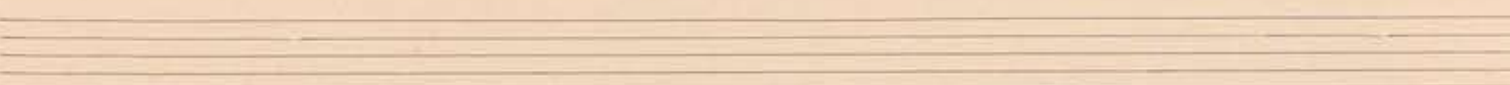
KLAVIERKONZERT MIT ORCHESTER

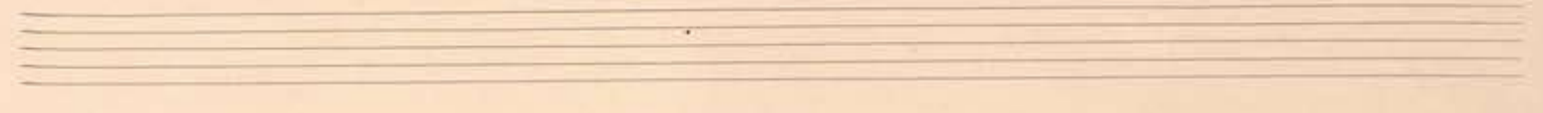
N. ΣΚΑΛΚΩΤΑΣ

N. ΣΚΑΛΚΩΤΑΣ
ΑΘΗΝΑΙ

α 17 Β 4







Πρώτο Κλαβιέρ

Πρώτο Κοντσέρτο για Πρώτο και δεύτερο

Zweites Klavier-Konzert mit Orchester

N. Σκακωτάς

N. ΣΚΑΚΩΤΑΣ
ΑΘΗΝΑΙ

N. ΣΥΝΕΣΤΑΕ
ΑΘΗΝΑΙ

ΠΡΩΤΟ ΜΕΡΟΣ

ERSTER SATZ

Allergromolto vivace

5

10

2)

15

Tempo I

Handwritten musical score for the first system. It consists of three staves: a treble staff, a middle treble staff, and a bass staff. The notation includes complex chordal structures with many accidentals (sharps and flats), triplets, and various rhythmic markings. The key signature appears to be B-flat major or D-flat minor. The first staff has a treble clef and a 4/4 time signature. The second staff has a treble clef. The third staff has a bass clef. There are some handwritten annotations and slurs throughout the system.

Two empty musical staves, one treble and one bass, for the second system.

Two empty musical staves, one treble and one bass, for the third system.

Tempo

Handwritten musical score for the second system. It consists of three staves: a treble staff, a middle treble staff, and a bass staff. The notation includes complex chordal structures, a 'rit.' (ritardando) marking in the first measure of the second staff, and various rhythmic markings. The key signature appears to be B-flat major or D-flat minor. The first staff has a treble clef and a 4/4 time signature. The second staff has a treble clef. The third staff has a bass clef. There are some handwritten annotations and slurs throughout the system.

Two empty musical staves, one treble and one bass, for the third system.

Two empty musical staves, one treble and one bass, for the fourth system.

25

4)

Handwritten musical score for exercise 25, consisting of three staves. The notation includes various rhythmic values, accidentals, and phrasing slurs. The first staff begins with a treble clef and a key signature of one flat. The second staff continues the melodic line with similar notation. The third staff features more complex rhythmic patterns and phrasing. Below the three staves are four empty staves for practice.

30

Handwritten musical score for exercise 30, consisting of three staves. The notation includes various rhythmic values, accidentals, and phrasing slurs. The first staff begins with a treble clef and a key signature of one flat. The second staff continues the melodic line with similar notation. The third staff features more complex rhythmic patterns and phrasing. Below the three staves are four empty staves for practice.

35

5)

Handwritten musical score for the first system, measures 1-4. The notation includes a treble clef staff with a melodic line, a bass clef staff with a bass line, and a grand staff with piano accompaniment. The notation includes various chords, accidentals, and dynamic markings.

Empty musical staves for the first system, measures 1-4.

Or

Handwritten musical score for the second system, measures 1-4. The notation includes a treble clef staff with a melodic line, a bass clef staff with a bass line, and a grand staff with piano accompaniment. The notation includes various chords, accidentals, and dynamic markings.

Empty musical staves for the second system, measures 1-4.

Empty musical staves at the bottom of the page.

Handwritten musical score for three staves. The top staff contains a melodic line with various accidentals and dynamics. The middle and bottom staves contain complex chordal textures with many notes and accidentals. The bottom two staves are empty.

25

Handwritten musical score for three staves. The top staff has a melodic line with a dynamic marking 'f'. The middle and bottom staves have complex textures with many notes and accidentals. The bottom two staves are empty.

Two empty musical staves at the bottom of the page.

50

Handwritten musical score for exercise 50, measures 1-4. The score is written on three staves. The top staff is in treble clef, the middle in alto clef, and the bottom in bass clef. The key signature has one flat (B-flat). The first measure contains a whole note chord with notes G4, Bb4, and D5. The second measure contains a whole note chord with notes G4, Bb4, and D5. The third measure contains a whole note chord with notes G4, Bb4, and D5. The fourth measure contains a whole note chord with notes G4, Bb4, and D5. There are various annotations including 'p' (piano), 'f' (forte), and 'guacasso'.

Handwritten musical score for exercise 50, measures 5-8. The score is written on three staves. The top staff is in treble clef, the middle in alto clef, and the bottom in bass clef. The key signature has one flat (B-flat). The first measure contains a whole note chord with notes G4, Bb4, and D5. The second measure contains a whole note chord with notes G4, Bb4, and D5. The third measure contains a whole note chord with notes G4, Bb4, and D5. The fourth measure contains a whole note chord with notes G4, Bb4, and D5. There are various annotations including 'f' (forte), 'si', and 'ra. lento'.

55

Handwritten musical score for exercise 55, measures 1-4. The score is written on three staves. The top staff is in treble clef, the middle in alto clef, and the bottom in bass clef. The key signature has one flat (B-flat). The first measure contains a whole note chord with notes G4, Bb4, and D5. The second measure contains a whole note chord with notes G4, Bb4, and D5. The third measure contains a whole note chord with notes G4, Bb4, and D5. The fourth measure contains a whole note chord with notes G4, Bb4, and D5. There are various annotations including 'p' (piano) and 'pizz' (pizzicato).

Handwritten musical score for exercise 55, measures 5-8. The score is written on three staves. The top staff is in treble clef, the middle in alto clef, and the bottom in bass clef. The key signature has one flat (B-flat). The first measure contains a whole note chord with notes G4, Bb4, and D5. The second measure contains a whole note chord with notes G4, Bb4, and D5. The third measure contains a whole note chord with notes G4, Bb4, and D5. The fourth measure contains a whole note chord with notes G4, Bb4, and D5. There are various annotations including 'f' (forte) and 'pizz' (pizzicato).

Handwritten musical notation for the first system, consisting of two staves. The top staff is in treble clef and the bottom in bass clef. The music features complex chords with many accidentals (sharps and flats) and some triplets. There are some markings like '4' and '3' above notes. A 'bizz' marking is present in the lower right of the system.

Handwritten musical notation for the second system, also in two staves. This system is characterized by very dense, multi-note chords, possibly representing a guitar texture. There are some melodic fragments and markings like '6' and '3' above notes. A 'thema' marking is written in the lower right.

60

Handwritten musical notation for the third system, consisting of two staves. The music is sparser than the previous systems, with many rests and fewer notes. There are some chordal structures and a large handwritten 'H' or similar symbol in the lower right.

Handwritten musical notation for the fourth system, consisting of two staves. This system has more active melodic lines in both staves, with many eighth and sixteenth notes. There are also complex chordal textures and some triplets.

Four empty musical staves at the bottom of the page, indicating the end of the written music on this page.

65

Handwritten musical notation for system 65, measures 1-4. The system consists of three staves. The first staff is in treble clef with a key signature of one flat (B-flat). The second staff is in bass clef. The third staff is in bass clef. The notation includes various rhythmic values, accidentals, and phrasing slurs.

Handwritten musical notation for system 65, measures 5-8. The system consists of two staves. The notation is dense with many notes and accidentals, including a large multi-measure rest in the second staff.

70

Handwritten musical notation for system 70, measures 1-4. The system consists of three staves. The first staff is in treble clef with a key signature of two sharps (F# and C#). The second and third staves are in bass clef. The notation includes rests and melodic lines.

Handwritten musical notation for system 70, measures 5-8. The system consists of two staves. The notation is dense with many notes and accidentals, including a large multi-measure rest in the second staff.

Handwritten musical notation for the first system. It consists of three staves. The top staff is in treble clef with a key signature of one sharp (F#) and a 4/4 time signature. It contains several measures of music, including a whole note chord, a half note chord, and a quarter note chord. The middle staff is in bass clef and contains a whole note chord, a half note chord, and a quarter note chord. The bottom staff is empty.

Handwritten musical notation for the second system. It consists of two staves. The top staff is in treble clef and contains a series of chords and melodic lines. The bottom staff is in bass clef and contains a series of chords and melodic lines. The notation is dense and includes many accidentals and rhythmic markings.

75

Handwritten musical notation for the third system. It consists of three staves. The top staff is in treble clef and contains a few notes and rests. The middle staff is in bass clef and contains a few notes and rests. The bottom staff is empty.

Handwritten musical notation for the fourth system. It consists of two staves. The top staff is in treble clef and contains a series of chords and melodic lines. The bottom staff is in bass clef and contains a series of chords and melodic lines. The notation is dense and includes many accidentals and rhythmic markings.

Handwritten musical notation for the fifth system, consisting of three empty staves.

80

Handwritten musical notation for system 80, consisting of three staves. The top two staves are in treble clef, and the bottom staff is in bass clef. All staves contain rests. A large handwritten number '2' is written on the right side of the system.

Handwritten musical notation for system 80, consisting of two staves. The top staff is in treble clef and the bottom staff is in bass clef. Both staves contain complex melodic and harmonic lines with various accidentals and articulations. A large handwritten number '2' is written on the right side of the system.

85

Handwritten musical notation for system 85, consisting of four staves. The top two staves are in treble clef, and the bottom two staves are in bass clef. All staves contain complex melodic and harmonic lines with various accidentals and articulations. A large handwritten number '2' is written on the left side of the system.

Handwritten musical score for guitar, measures 85-90. The score is written on six staves. The first three staves show a melodic line in the treble clef and a bass line in the bass clef. The last three staves show a guitar-specific notation with fret numbers and fingerings. The music is in a key with one flat and a 4/4 time signature. The piece concludes with a double bar line and the word "ped." written below the staff.

90

Handwritten musical score for guitar, measures 91-94. The score is written on six staves. The first three staves show a melodic line in the treble clef and a bass line in the bass clef. The last three staves show a guitar-specific notation with fret numbers and fingerings. The music is in a key with one flat and a 4/4 time signature. The piece concludes with a double bar line and a final chord.

95

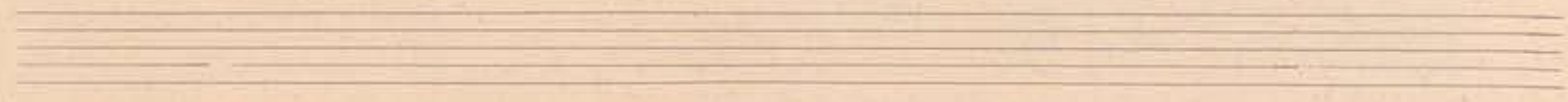
Handwritten musical score for exercise 95. It consists of two systems of three staves each. The first system includes treble and bass clefs, a key signature of one flat, and a 4/4 time signature. The second system features a treble clef and includes dynamic markings such as *f* and *pizzicato*. The notation includes various note values, rests, and articulation marks.

100

Handwritten musical score for exercise 100. It consists of two systems of three staves each. The first system includes treble and bass clefs, a key signature of one flat, and a 4/4 time signature. The second system features a treble clef and includes a triplet marking. The notation includes various note values, rests, and articulation marks.

Handwritten musical notation for the first system, consisting of three staves. The top staff has a treble clef and contains a sequence of notes with accidentals (sharps and flats) and a dynamic marking 'f/p'. The middle and bottom staves have bass clefs and contain more complex notation with various accidentals and note values.

Handwritten musical notation for the second system, consisting of two staves. The top staff has a treble clef and features a series of chords and melodic lines. The bottom staff has a bass clef and contains a bass line with various note values and accidentals.



Handwritten musical notation for the third system, consisting of three staves. The top staff has a treble clef and contains a complex melodic line with many accidentals. The middle and bottom staves have bass clefs and contain bass lines with various note values and accidentals.

Handwritten musical notation for the fourth system, consisting of two staves. The top staff has a treble clef and features a series of chords and melodic lines. The bottom staff has a bass clef and contains a bass line with various note values and accidentals.



110

Handwritten musical score for exercise 110. The score consists of two systems. The first system has a treble clef staff with a melodic line and a bass clef staff with a bass line. The second system continues the piece with more complex rhythmic patterns and accidentals. The key signature has one flat (B-flat).

115

Handwritten musical score for exercise 115. The score consists of two systems. The first system has a treble clef staff with a melodic line and a bass clef staff with a bass line. The second system continues the piece with more complex rhythmic patterns and accidentals. The word "deim" is written above the treble staff, and "guabana" is written below the bass staff. The key signature has one flat (B-flat).

120

Handwritten musical score for exercise 120, measures 1-3. The score is written on three staves (treble, alto, and bass clefs). Measure 1 contains a whole note chord in the treble clef and a whole note chord in the bass clef. Measure 2 contains a whole note chord in the treble clef and a whole note chord in the bass clef. Measure 3 contains a whole note chord in the treble clef and a whole note chord in the bass clef. The tempo is marked 'rit.' (ritardando). There are some handwritten annotations and a large '3' written across the staves.

Handwritten musical score for exercise 120, measures 4-6. The score is written on three staves. Measure 4 contains a whole note chord in the treble clef and a whole note chord in the bass clef. Measure 5 contains a whole note chord in the treble clef and a whole note chord in the bass clef. Measure 6 contains a whole note chord in the treble clef and a whole note chord in the bass clef. The tempo is marked 'rit.' (ritardando). There are some handwritten annotations and a large 'f' written across the staves.

125

Empty musical staves for exercise 125, consisting of three staves (treble, alto, and bass clefs) with no musical notation.

Handwritten musical score for exercise 125, measures 1-4. The score is written on three staves. Measure 1 contains a whole note chord in the treble clef and a whole note chord in the bass clef. Measure 2 contains a whole note chord in the treble clef and a whole note chord in the bass clef. Measure 3 contains a whole note chord in the treble clef and a whole note chord in the bass clef. Measure 4 contains a whole note chord in the treble clef and a whole note chord in the bass clef. There are some handwritten annotations and a large '3' written across the staves.

Handwritten musical notation for the first system. It consists of three staves. The top staff shows guitar chords with sharp and flat accidentals. The middle staff contains guitar chords with some 'pizz' (pizzicato) markings. The bottom staff is a bass line with notes and rests. There are some scribbles and a large '5' written in the first measure of the top staff.

Handwritten musical notation for the second system. It features a vocal or melodic line in the top staff with notes and slurs. Below it are guitar accompaniment staves with chords and rhythmic markings. A 'pizz' marking is visible in the first measure of the guitar part.

130

Handwritten musical notation for the third system. The top staff has a 'Solo' section with wavy lines indicating sustained notes or effects. Below are guitar and bass staves with complex chordal textures and melodic lines. The guitar part includes many notes and some triplets.

Handwritten musical notation for the fourth system. It shows dense guitar textures with many notes in the upper staves. The lower staves contain melodic lines and bass accompaniment. There are some dynamic markings like 'f' and 'p'.

135

18

Handwritten musical notation for exercise 135, measures 1-4. The score is written on three staves (treble, alto, and bass clefs). The key signature has one flat (B-flat). The first two measures are mostly rests. The third measure contains a half note G4 in the treble and a half note G2 in the bass. The fourth measure contains a half note A4 in the treble and a half note A2 in the bass.

Handwritten musical notation for exercise 135, measures 5-8. This section is more complex, featuring sixteenth notes, eighth notes, and chords. The treble staff has a melodic line with various intervals and accidentals. The bass staff provides harmonic support with chords and moving lines. The notation includes many accidentals (sharps, flats, naturals) and dynamic markings.

140

Handwritten musical notation for exercise 140, measures 1-4. The score is written on three staves. The key signature has one flat. The first measure has a half note G4 in the treble and a half note G2 in the bass. The second measure has a half note A4 in the treble and a half note A2 in the bass. The third and fourth measures contain more complex rhythmic patterns with eighth and sixteenth notes.

Handwritten musical notation for exercise 140, measures 5-8. This section continues the complex rhythmic patterns from the previous measures. It features dense chordal textures and intricate melodic lines in both the treble and bass staves. The notation is highly detailed with many accidentals and dynamic markings.

150

20)

Handwritten musical notation for exercise 150. The piece is written in 4/4 time. The first system consists of three measures. The first measure has a treble clef with a melodic line starting on G4 and a bass clef with a bass line starting on G2. The second measure has a treble clef with a melodic line starting on A4 and a bass clef with a bass line starting on A2. The third measure has a treble clef with a melodic line starting on B4 and a bass clef with a bass line starting on B2. The notation includes various chords, including triads and dyads, and some melodic ornaments. The second system also consists of three measures, with the first measure having a treble clef and the second and third measures having a bass clef. The notation continues with similar chordal and melodic patterns.

Two empty musical staves, one for the treble clef and one for the bass clef, corresponding to the exercise above.

155

Handwritten musical notation for exercise 155. The piece is written in 4/4 time. The first system consists of three measures. The first measure has a treble clef with a melodic line starting on G4 and a bass clef with a bass line starting on G2. The second measure has a treble clef with a melodic line starting on A4 and a bass clef with a bass line starting on A2. The third measure has a treble clef with a melodic line starting on B4 and a bass clef with a bass line starting on B2. The notation includes various chords, including triads and dyads, and some melodic ornaments. The second system also consists of three measures, with the first measure having a treble clef and the second and third measures having a bass clef. The notation continues with similar chordal and melodic patterns, including triplets in the bass line.

Two empty musical staves, one for the treble clef and one for the bass clef, corresponding to the exercise above.

Two empty musical staves at the bottom of the page.

160

Handwritten musical score for exercise 160. The first system consists of three staves. The top staff is in treble clef, the middle in treble clef, and the bottom in bass clef. It contains various musical notations including notes, rests, and dynamic markings like 'p' and 'f'. The second system is mostly empty staves with a few notes in the bottom staff. The third system is also mostly empty staves with a few notes in the bottom staff.

165

Handwritten musical score for exercise 165. The first system consists of three staves. The top staff is in treble clef, the middle in treble clef, and the bottom in bass clef. It contains various musical notations including notes, rests, and dynamic markings like 'p' and 'f'. The second system is mostly empty staves with a few notes in the bottom staff. The third system is also mostly empty staves with a few notes in the bottom staff.

Handwritten musical score for guitar, measures 1-6. The score is written on six staves. The first two staves are treble clef, and the last two are bass clef. It features complex rhythmic patterns, triplets, and sixteenth-note runs. A 'pizz' marking is present at the beginning of the first measure.

170

Handwritten musical score for guitar, measures 7-12. The score is written on six staves. It continues the complex rhythmic and melodic patterns from the previous section, including triplets and sixteenth-note runs. A 'gua' marking is present above the first measure of the second system.

175

Handwritten musical notation for exercise 175, measures 1-3. The notation is on three staves: two treble clefs and one bass clef. The first two staves are mostly empty, with some notes in the third measure. The third staff contains a sequence of notes in the third measure.

Handwritten musical notation for exercise 175, measures 4-6. The notation is on two staves: a treble clef and a bass clef. The music is dense with many notes, including triplets and slurs. There are dynamic markings like 'f' and 'p'.

180

Handwritten musical notation for exercise 180, measures 1-3. The notation is on three staves: two treble clefs and one bass clef. The first two staves have some notes and slurs. The third staff contains a sequence of notes.

Handwritten musical notation for exercise 180, measures 4-6. The notation is on two staves: a treble clef and a bass clef. The music is dense with many notes, including triplets and slurs. There are dynamic markings like 'f' and 'p'.

185

190

Handwritten musical score for exercise 190. The score is written on a system of four staves. The top two staves are for guitar, showing chords and fingerings. The bottom two staves are for a melodic instrument, likely a violin or flute, with notes and slurs. The music is in a key with one flat (B-flat major or D minor) and a 4/4 time signature. The exercise consists of three measures, with the third measure containing more complex melodic and harmonic material.

195

Handwritten musical score for exercise 195. The score is written on a system of four staves. The top two staves are for guitar, showing chords and fingerings. The bottom two staves are for a melodic instrument, likely a violin or flute, with notes and slurs. The music is in a key with one flat (B-flat major or D minor) and a 4/4 time signature. The exercise consists of three measures, with the third measure containing more complex melodic and harmonic material, including triplets and sixteenth notes.

Handwritten musical score for the first system. It consists of two systems of staves. The first system has a treble staff with notes and a bass staff with a flat sign. The second system has a treble staff with chords and triplets, and a bass staff with a sixteenth-note run. Dynamic markings include 'cresc' and 'p'. There are large handwritten 'H' marks in the first system.

200

Handwritten musical score for the second system. It consists of two systems of staves. The first system has a treble staff with notes and a bass staff with a flat sign. The second system has a treble staff with chords and triplets, and a bass staff with a sixteenth-note run. Dynamic markings include 'p' and 'gua'. There are large handwritten 'H' marks in the first system.

Handwritten musical notation for the first system, consisting of three staves. The top staff has a treble clef and contains a few notes and rests. The middle and bottom staves are mostly empty with some faint markings.

Handwritten musical notation for the second system, consisting of two staves. The top staff has a treble clef and contains complex rhythmic patterns with triplets and sixteenth notes. The bottom staff has a bass clef and contains corresponding bass line with sixteenth notes and rests.

A set of three empty musical staves.

Handwritten musical notation for the third system, consisting of three staves. The top staff has a treble clef and contains a few notes and rests. The middle and bottom staves are mostly empty with some faint markings.

Handwritten musical notation for the fourth system, consisting of two staves. The top staff has a treble clef and contains complex rhythmic patterns with triplets and sixteenth notes. The bottom staff has a bass clef and contains corresponding bass line with sixteenth notes and rests.

A set of three empty musical staves.

The first system of the handwritten musical score consists of two staves. The upper staff is in treble clef and contains a series of chords and melodic fragments, including triplets and a 'grace' note. The lower staff is in bass clef and features a complex melodic line with many notes, some marked with fingerings (5, 6, 8) and slurs. The music is written in a style that suggests a specific key signature and time signature, though they are not explicitly stated.

The second system of the handwritten musical score also consists of two staves. The upper staff continues the melodic and chordal material from the first system, featuring a triplet and a dynamic marking of 'sf' (sforzando). The lower staff continues the complex melodic line with various fingerings and slurs. The notation is dense and detailed, characteristic of a composer's manuscript.

210

The first system of the handwritten musical score consists of three staves. The top staff begins with a treble clef and a key signature of one flat (B-flat). It contains several measures of music, including a large '3' written in the first measure, possibly indicating a triplet or a specific fingering. The middle and bottom staves continue the musical notation with various note values, rests, and dynamic markings such as 'f' (forte). The notation is dense and includes many accidentals and slurs.

The second system of the handwritten musical score consists of three staves. The top staff has a treble clef and a key signature of one flat. It contains several measures of music, including a vertical sequence of notes (possibly a scale or chord progression) written in the first measure. The middle and bottom staves continue the musical notation with various note values, rests, and accidentals. The notation is dense and includes many accidentals and slurs.

The third system of the handwritten musical score consists of three staves. The top staff has a treble clef and a key signature of one flat. It contains several measures of music, including a vertical sequence of notes (possibly a scale or chord progression) written in the first measure. The middle and bottom staves continue the musical notation with various note values, rests, and accidentals. The notation is dense and includes many accidentals and slurs.

215

220

Handwritten musical notation for the first system, consisting of three staves. The top two staves are in treble clef, and the bottom staff is in bass clef. The notation includes various notes, rests, and accidentals.

Handwritten musical notation for the second system, featuring guitar-specific notation. It includes chords, a large 'X' symbol, and various notes and accidentals. The notation is spread across three staves.

225

Handwritten musical notation for the third system, including notes, rests, and a circled chord. The notation is spread across three staves.

Handwritten musical notation for the fourth system, featuring guitar-specific notation such as chords and a large 'X' symbol. The notation is spread across three staves.

Handwritten musical notation for the fifth system, consisting of three empty staves.

230

Handwritten musical score for exercise 230. It consists of three staves. The top staff is in treble clef, the middle in bass clef, and the bottom in bass clef. The notation includes various chords, accidentals (sharps, flats, naturals), and dynamic markings such as *pp*, *ppp*, *dim*, and *rit*. There are also some handwritten annotations and a circled '2' at the end of the piece.

Two empty musical staves, one in treble clef and one in bass clef, corresponding to the exercise above.

235

Handwritten musical score for exercise 235. It consists of three staves. The top staff is in treble clef, the middle in bass clef, and the bottom in bass clef. The notation includes various chords, accidentals, and dynamic markings such as *pp*, *ppp*, *dim*, and *rit*. There are also some handwritten annotations and a circled '2' at the end of the piece.

Two empty musical staves, one in treble clef and one in bass clef, corresponding to the exercise above.

240

Handwritten musical score for exercise 240. The first system consists of three staves. The top staff is in treble clef, the middle in alto clef, and the bottom in bass clef. It contains complex chordal textures and melodic lines. The second system continues with similar textures. The third system features a more active melodic line in the top staff, starting with a *mf* dynamic marking, and a bass line with a triplet of eighth notes. The key signature has one sharp (F#).

245

Handwritten musical score for exercise 245. The first system consists of three staves. The top staff is in treble clef, the middle in alto clef, and the bottom in bass clef. It contains complex chordal textures and melodic lines. The second system continues with similar textures. The third system features a more active melodic line in the top staff, starting with a *p* dynamic marking, and a bass line with a triplet of eighth notes. The key signature has one flat (Bb).

255

Handwritten musical notation for the first system, consisting of three staves. The top staff has a treble clef and a key signature of one sharp (F#). The middle and bottom staves have bass clefs. The music is mostly rests in the first two measures, followed by melodic lines in the third measure.

Handwritten musical notation for the second system, consisting of two staves. The top staff has a treble clef and a key signature of one sharp (F#). The bottom staff has a bass clef and is labeled "R.H.". The music features complex chords and melodic lines. A "gva" marking is present above the top staff.

Handwritten musical notation for the third system, consisting of three staves. The top staff has a treble clef and a key signature of one sharp (F#). The middle and bottom staves have bass clefs. The music includes chords and melodic lines.

Handwritten musical notation for the fourth system, consisting of two staves. The top staff has a treble clef and a key signature of one sharp (F#). The bottom staff has a bass clef. The music features complex chords and melodic lines.

Handwritten musical notation for the first system, consisting of three staves. The top staff has a treble clef and a key signature of one flat. The middle staff has a treble clef. The bottom staff has a bass clef. The music includes various note values and rests across three measures.

Handwritten musical notation for the second system, consisting of two staves. The top staff has a treble clef and a key signature of one flat. The bottom staff has a bass clef. The music includes complex rhythmic patterns, slurs, and a *dim* marking with a dashed line.

Two empty musical staves.

Handwritten musical notation for the third system, consisting of three staves. The top staff has a treble clef. The middle staff has a bass clef. The bottom staff has a bass clef. The music includes complex rhythmic patterns and slurs.

Handwritten musical notation for the fourth system, consisting of two staves. The top staff has a treble clef. The bottom staff has a bass clef. The music includes complex rhythmic patterns, slurs, and a *rit.* marking with a dashed line.

Two empty musical staves.

265

Handwritten musical score for exercise 265. It consists of three staves. The top staff is in treble clef with a key signature of one sharp (F#) and a 4/4 time signature. The middle staff is in bass clef with a key signature of one flat (Bb) and a 4/4 time signature. The bottom staff is in bass clef with a key signature of one sharp (F#) and a 4/4 time signature. The notation includes complex chordal structures, often with multiple notes per stem, and some melodic lines. There are some handwritten annotations and corrections throughout the score.

Two empty musical staves, one in treble clef and one in bass clef, positioned below the main score for exercise 265.

270

Handwritten musical score for exercise 270. It consists of three staves. The top staff is in treble clef with a key signature of one sharp (F#) and a 4/4 time signature. The middle staff is in bass clef with a key signature of one flat (Bb) and a 4/4 time signature. The bottom staff is in bass clef with a key signature of one sharp (F#) and a 4/4 time signature. The notation includes complex chordal structures, often with multiple notes per stem, and some melodic lines. There are some handwritten annotations and corrections throughout the score.

Two empty musical staves, one in treble clef and one in bass clef, positioned below the main score for exercise 270.

Two empty musical staves at the bottom of the page, one in treble clef and one in bass clef.

275

38

280

A system of three empty musical staves, consisting of a treble clef staff, a middle staff, and a bass clef staff.

Handwritten musical notation for the second system. The top staff (treble clef) contains a sequence of chords and melodic fragments. The bottom staff (bass clef) features a complex rhythmic pattern with triplets and various accidentals. The system concludes with a double bar line and a diagonal slash.

A system of three empty musical staves, consisting of a treble clef staff, a middle staff, and a bass clef staff.

Handwritten musical notation for the third system. The top staff (treble clef) contains a large, stylized flourish or symbol. The bottom staff (bass clef) contains a large, stylized flourish or symbol. The system concludes with a double bar line and a diagonal slash.

Handwritten musical notation for the fourth system. The top staff (treble clef) contains a sequence of chords and melodic fragments. The bottom staff (bass clef) features a complex rhythmic pattern with triplets and various accidentals. The system concludes with a double bar line and a diagonal slash.

A system of three empty musical staves, consisting of a treble clef staff, a middle staff, and a bass clef staff.

Two systems of empty musical staves. Each system consists of three staves: a treble clef staff, a middle staff, and a bass clef staff. The staves are currently blank.

Handwritten musical notation for the first system. The top staff (treble clef) contains a melodic line with eighth and sixteenth notes, including slurs and accents. The bottom staff (bass clef) contains a complex accompaniment with many beamed notes and rests. The middle staff is empty.

Two systems of empty musical staves. Each system consists of three staves: a treble clef staff, a middle staff, and a bass clef staff. The staves are currently blank.

Handwritten musical notation for the second system. The top staff (treble clef) contains a melodic line with slurs and accents. The bottom staff (bass clef) contains a complex accompaniment with many beamed notes and rests. The middle staff is empty.

295

Handwritten musical notation for exercise 295, measures 1-3. The notation is written on three staves (treble, alto, and bass clefs). Measure 1 contains a whole rest on all staves. Measure 2 features a complex melodic line in the treble clef with various accidentals (flats and naturals) and a rhythmic pattern of eighth notes. The bass clef has a simple accompaniment of quarter notes. Measure 3 continues the melodic and accompaniment patterns.

Handwritten musical notation for exercise 295, measures 4-7. Measures 4 and 5 feature triplets in both the treble and bass clefs. Measures 6 and 7 show a more active melodic line in the treble clef with slurs and various accidentals, while the bass clef continues with a rhythmic accompaniment.

300

Four empty musical staves (treble, alto, and bass clefs) for exercise 300, indicating that the notation for this exercise is not present on this page.

Handwritten musical notation for exercise 300, measures 1-4. Measure 1 has a melodic line in the treble clef and an accompaniment in the bass clef. Measure 2 includes a section enclosed in a dashed box with the number '800' written above it. Measures 3 and 4 feature more complex melodic lines in the treble clef, including slurs and a '5' fingering indication, with corresponding accompaniment in the bass clef.

Three empty musical staves, likely for vocal or instrumental parts, positioned at the top of the page.

gna

Handwritten musical notation for a piano accompaniment. It features a series of chords in the left hand and a melodic line in the right hand. The notation includes various ornaments, fingerings (e.g., 4, 6, 3), and dynamic markings. The piece is in a key with one flat and a common time signature.

305

Handwritten musical notation for a piano accompaniment, showing a few measures with dynamic markings like 'f'. The notation includes chords and melodic lines.

Handwritten musical notation for a piano accompaniment, showing a few measures with dynamic markings like 'f'. The notation includes chords and melodic lines.

310

Handwritten musical score for exercise 310. It consists of three staves. The top staff is in treble clef and contains a sequence of notes with various accidentals (sharps, flats, naturals) and some slurs. The middle staff is in bass clef and contains a few notes, including a whole note and a half note, with some accidentals. The bottom staff is in bass clef and contains a more complex sequence of notes with many accidentals and slurs. There are some handwritten annotations like 'α' and 'p' scattered throughout.

Two empty musical staves, one in treble clef and one in bass clef, positioned below the first system of exercise 310.

315

Handwritten musical score for exercise 315. It consists of three staves. The top staff is in treble clef and features complex notation, including triplets, slurs, and fingerings (e.g., '3', '4', '5'). There are also some handwritten annotations like 'gua' and 'b'. The middle staff is in bass clef and contains a few notes with accidentals. The bottom staff is in bass clef and contains a sequence of notes with various accidentals and slurs.

Two empty musical staves, one in treble clef and one in bass clef, positioned below the first system of exercise 315.

Two empty musical staves at the bottom of the page, one in treble clef and one in bass clef.

gua

Handwritten musical score for guitar, consisting of three systems of staves. The first system has four measures with complex chordal textures and melodic lines. The second system has four measures with similar complexity. The third system consists of four empty staves, with a treble clef at the end of the fourth measure.

320

Handwritten musical score for guitar, consisting of two systems of staves. The first system has four measures with melodic lines and chords. The second system has four measures with more complex textures, including triplets and a "piss" annotation.

gua

This system contains three measures of music. The top staff (treble clef) begins with a key signature of one sharp (F#) and a common time signature (C). It features a series of chords and melodic fragments, including a half note followed by quarter notes. The middle staff (treble clef) continues with similar harmonic and melodic material. The bottom staff (bass clef) provides a bass line with chords and a few melodic notes. A dashed line labeled 'gua' is positioned above the first measure.

This system contains three measures of music. The top staff (treble clef) is filled with dense, multi-voice chords, many of which are marked with a '3' indicating a triplet. The middle staff (treble clef) has a more active melodic line with eighth and sixteenth notes. The bottom staff (bass clef) features a bass line with chords and some melodic movement. A dashed line labeled 'gua' is positioned above the first measure.

This system contains three measures of music. The top staff (treble clef) shows a melodic line with some grace notes and slurs. The middle staff (treble clef) has a more active melodic line with eighth and sixteenth notes. The bottom staff (bass clef) features a bass line with chords and some melodic movement. A dashed line labeled 'gua' is positioned above the first measure.

gua

This system contains three measures of music. The top staff (treble clef) is filled with dense, multi-voice chords, many of which are marked with a '3' indicating a triplet. The middle staff (treble clef) has a more active melodic line with eighth and sixteenth notes. The bottom staff (bass clef) features a bass line with chords and some melodic movement. A dashed line labeled 'gua' is positioned above the first measure.

The first system of the handwritten musical score consists of two staves. The upper staff is in treble clef and contains a melodic line with various note values and rests. The lower staff is in bass clef and contains a bass line with notes and rests. There are several measures of music, with some notes beamed together. A red box highlights the number '330' at the top center of the page.



The second system of the handwritten musical score consists of two staves. The upper staff is in treble clef and contains a melodic line with various note values and rests. The lower staff is in bass clef and contains a bass line with notes and rests. There are several measures of music, with some notes beamed together.

The third system of the handwritten musical score consists of two staves. The upper staff is in treble clef and contains a melodic line with various note values and rests. The lower staff is in bass clef and contains a bass line with notes and rests. There are several measures of music, with some notes beamed together.



335

42

Handwritten musical score for exercise 335, measures 1-5. The score is written on three staves. The top staff is in treble clef with a key signature of one sharp (F#). The middle staff is in treble clef with a key signature of one sharp (F#). The bottom staff is in bass clef. The music consists of rests in the first three measures, followed by melodic lines in the fourth and fifth measures.

Handwritten musical score for exercise 335, measures 6-9. The top staff is in treble clef with a key signature of one sharp (F#) and the instruction *sostenuto*. The bottom staff is in bass clef with a key signature of one sharp (F#). The music consists of rests in the first two measures, followed by melodic lines in the third and fourth measures.

340

Handwritten musical score for exercise 340, measures 1-4. The score is written on four staves. The top two staves are in treble clef and contain rests. The third staff is in treble clef with a key signature of one sharp (F#) and a dynamic marking of *f*. The bottom staff is in bass clef with a key signature of one sharp (F#). The music consists of rests in the first two measures, followed by complex melodic and harmonic lines in the third and fourth measures.

The first system of the handwritten musical score consists of four staves. The top two staves are treble clefs, and the bottom two are bass clefs. The first two staves are mostly empty, with a few notes and rests. The third staff (bass clef) contains a sequence of notes with accidentals (flats and sharps) and rests. The fourth staff (bass clef) contains a more complex melodic line with many notes, some beamed together, and various accidentals.

34-5

The second system of the handwritten musical score also consists of four staves. The top two staves are treble clefs, and the bottom two are bass clefs. The first two staves are mostly empty, with a few notes and rests. The third staff (bass clef) contains a sequence of notes with accidentals and rests. The fourth staff (bass clef) contains a more complex melodic line with many notes, some beamed together, and various accidentals. There are also some dynamic markings like accents (>) and slurs.

Handwritten musical notation for the first system, consisting of three staves. The top two staves are in treble clef, and the bottom staff is in bass clef. The music includes various notes, rests, and dynamic markings.

Handwritten musical notation for the second system, consisting of two staves. The top staff is in treble clef and the bottom staff is in bass clef. It features a melodic line with a triplet in the bass staff.

Empty musical staves.

Handwritten musical notation for the third system, consisting of three staves. The top staff is in treble clef, the middle staff is in bass clef, and the bottom staff is in bass clef. The music is sparse with many rests.

Handwritten musical notation for the fourth system, consisting of two staves. The top staff is in treble clef and the bottom staff is in bass clef. It features a melodic line with a fermata and a dynamic marking 'f'.

Empty musical staves.

350

Handwritten musical score for exercise 350, first system. It consists of three staves. The top staff has a treble clef and a key signature of one flat. The middle staff has a treble clef. The bottom staff has a bass clef. The music begins with a rest in the first measure, followed by a dynamic marking 'pizz f' and a series of notes in the second and third measures.

Handwritten musical score for exercise 350, second system. It consists of two staves. The top staff has a treble clef and a key signature of one flat. The bottom staff has a bass clef. The music continues with complex rhythmic patterns and dynamic markings like 'p' and 'f'.

355

Handwritten musical score for exercise 355, first system. It consists of three staves. The top staff has a treble clef. The middle staff has a treble clef. The bottom staff has a bass clef. The music begins with a rest in the first measure, followed by notes in the second and third measures.

Fine

Handwritten musical score for exercise 355, second system. It consists of four staves. The top two staves have treble clefs. The bottom two staves have bass clefs. The music is highly complex with many notes and dynamic markings like 'f'.

ΔΕΥΤΕΡΟ ΜΕΡΟΣ

ZWEITER SATZ

Andantino

5

10

15

20

Handwritten musical notation for measures 20-24. The system consists of three staves. The top two staves are in treble clef, and the bottom staff is in bass clef. The music includes various notes, rests, and accidentals (sharps, flats, naturals). A large slur covers the first two measures of the top two staves. Measure 24 contains a complex chord structure with multiple notes and accidentals.

Handwritten musical notation for measures 25-29. The system consists of two staves, both in treble clef. The music is highly rhythmic and complex, featuring many beamed notes, slurs, and dynamic markings such as 'p' (piano) and '>' (accent). The notation is dense with many notes per measure.

25

30

Handwritten musical notation for measures 30-34. The system consists of three staves. The top two staves are in treble clef, and the bottom staff is in bass clef. The music includes notes, rests, and accidentals. A large slur covers the first two measures of the top two staves. Measure 34 contains a complex chord structure with multiple notes and accidentals.

Handwritten musical notation for measures 35-39. The system consists of two staves, both in treble clef. The music includes notes, rests, and accidentals. The notation is dense with many notes per measure.