

(*)

I

Penitencia

Handwritten musical score for the first system, featuring multiple staves with lyrics in Spanish. The lyrics include: "Ave ma tu...", "Ave ma tu...", "Ave ma tu...".

FA

Handwritten musical score for the second system, featuring multiple staves with lyrics in Spanish. The lyrics include: "Ave ma tu...", "Ave ma tu...".

(*)

I

PENYERVISIT

1

Handwritten musical notation on a five-line staff with a treble clef and a key signature of one flat (Bb). The lyrics are: "An- na teri-pa-pa-ku pu. ma teri-pa-pa-ku pu. an- na si ma-pa-ku pu."

Handwritten musical notation on a five-line staff with a treble clef and a key signature of one flat (Bb). The lyrics are: "ka- na si ma-pa-ku pu. ka- na si ma-pa-ku pu. ka- na si ma-pa-ku pu."

Handwritten musical notation on a five-line staff with a treble clef and a key signature of one flat (Bb). The lyrics are: "ka- na si ma-pa-ku pu. ka- na si ma-pa-ku pu. ka- na si ma-pa-ku pu."

Handwritten musical notation on a five-line staff with a treble clef and a key signature of one flat (Bb). The lyrics are: "ka- na si ma-pa-ku pu. ka- na si ma-pa-ku pu. ka- na si ma-pa-ku pu."

Handwritten musical notation on a five-line staff with a treble clef and a key signature of one flat (Bb). The lyrics are: "ka- na si ma-pa-ku pu. ka- na si ma-pa-ku pu. ka- na si ma-pa-ku pu."

Handwritten musical notation on a five-line staff with a treble clef and a key signature of one flat (Bb). The lyrics are: "ka- na si ma-pa-ku pu. ka- na si ma-pa-ku pu. ka- na si ma-pa-ku pu."

FA

Handwritten musical notation on a five-line staff with a treble clef and a key signature of one sharp (F#). The lyrics are: "ka- na si ma-pa-ku pu. ka- na si ma-pa-ku pu. ka- na si ma-pa-ku pu."

Handwritten musical notation on a five-line staff with a treble clef and a key signature of one sharp (F#). The lyrics are: "ka- na si ma-pa-ku pu. ka- na si ma-pa-ku pu. ka- na si ma-pa-ku pu."

Handwritten musical notation on a five-line staff with a treble clef and a key signature of one sharp (F#). The lyrics are: "ka- na si ma-pa-ku pu. ka- na si ma-pa-ku pu. ka- na si ma-pa-ku pu."

Handwritten musical notation on a five-line staff with a treble clef and a key signature of one sharp (F#). The lyrics are: "ka- na si ma-pa-ku pu. ka- na si ma-pa-ku pu. ka- na si ma-pa-ku pu."

Handwritten musical notation on a five-line staff with a treble clef and a key signature of one sharp (F#). The lyrics are: "ka- na si ma-pa-ku pu. ka- na si ma-pa-ku pu. ka- na si ma-pa-ku pu."

Handwritten musical notation on a five-line staff with a treble clef and a key signature of one sharp (F#). The lyrics are: "ka- na si ma-pa-ku pu. ka- na si ma-pa-ku pu. ka- na si ma-pa-ku pu."

Handwritten musical notation on a five-line staff with a treble clef and a key signature of one sharp (F#). The lyrics are: "ka- na si ma-pa-ku pu. ka- na si ma-pa-ku pu. ka- na si ma-pa-ku pu."

CADEIA 14 MONTA Basso

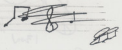
Handwritten musical notation for five staves in bass clef with a key signature of one flat. The notation includes various rhythmic patterns, slurs, and bar lines.

Basso

Plutonium

8/4

par... - fa - - r.



8/4

III

6 ton ses p... de p... i... ans... de... ga - - re... re... 70

8/4

6... x... p... de... re... e... re... re... re... re... re... re...

8/4

6... re... re... re... re... re... re... re... re... re... re...

6... re... re... re... re... re... re... re... re... re... re...

6

6... re... re... re... re... re... re... re... re... re... re...

8/4

6... re... re... re... re... re... re... re... re... re... re...

8/4

IV

6... re... re... re... re... re... re... re... re... re... re...

8/4

6... re... re... re... re... re... re... re... re... re... re...

8/4

6... re... re... re... re... re... re... re... re... re... re...

8/4

6... re... re... re... re... re... re... re... re... re... re...

8/4

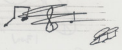
6... re... re... re... re... re... re... re... re... re... re...

8/4

6... re... re... re... re... re... re... re... re... re... re...

8/4

par le - fa - r.



III

8/4

6 ton ses pout de p i i fous sur les bras pa - ro se 70

8/4

6 me x-0 p de va e va-ri-tye re - u que p fous en gte.

8/4

6 m-0-0 6 roussons et i roussons rous-son

6 roussons rous-son rous-son rous-son rous-son rous-son rous-son

8/4

6 roussons rous-son rous-son rous-son rous-son rous-son

IV

8/4

6 roussons rous-son rous-son rous-son rous-son rous-son

8/4

6 roussons rous-son rous-son rous-son rous-son rous-son

8/4

6 roussons rous-son rous-son rous-son rous-son rous-son

8/4

6 roussons rous-son rous-son rous-son rous-son rous-son

8/4

6 roussons rous-son rous-son rous-son rous-son rous-son

8/4

6 roussons rous-son rous-son rous-son rous-son rous-son

Com m'importe plus de voir si on est riche ou pauvre

*)

V E V >

Handwritten musical score for section V, measures 12-19. The score is written on six staves. The top staff is the vocal line with lyrics: "12-19 pro-fer-ens se ad se-ctum su-um qui-um". The second staff has lyrics: "13-14 non-est in-ter-ru-ptus in-ter-ru-ptus in-ter-ru-ptus". The third staff has lyrics: "15-16 in-ter-ru-ptus in-ter-ru-ptus in-ter-ru-ptus". The fourth staff has lyrics: "17-18 in-ter-ru-ptus in-ter-ru-ptus in-ter-ru-ptus". The fifth staff has lyrics: "19 in-ter-ru-ptus in-ter-ru-ptus in-ter-ru-ptus". The sixth staff has lyrics: "20 in-ter-ru-ptus in-ter-ru-ptus in-ter-ru-ptus". There are circled 'E' marks above the second, third, and fifth staves.

Handwritten musical score for section V, measures 20-23. The score is written on three staves. The top staff is the vocal line with lyrics: "20 in-ter-ru-ptus in-ter-ru-ptus in-ter-ru-ptus". The second staff has lyrics: "21 in-ter-ru-ptus in-ter-ru-ptus in-ter-ru-ptus". The third staff has lyrics: "22 in-ter-ru-ptus in-ter-ru-ptus in-ter-ru-ptus". There are circled 'E' marks above the first and second staves.

VI

Handwritten musical score for section VI, measures 24-27. The score is written on four staves. The top staff is the vocal line with lyrics: "24 in-ter-ru-ptus in-ter-ru-ptus in-ter-ru-ptus". The second staff has lyrics: "25 in-ter-ru-ptus in-ter-ru-ptus in-ter-ru-ptus". The third staff has lyrics: "26 in-ter-ru-ptus in-ter-ru-ptus in-ter-ru-ptus". The fourth staff has lyrics: "27 in-ter-ru-ptus in-ter-ru-ptus in-ter-ru-ptus". There is a circled 'FA' mark above the first staff.

(*)

V E V >

Handwritten musical score for section V, featuring a vocal line and piano accompaniment. The key signature is one sharp (F#) and the time signature is 4/4. The lyrics are written below the notes.

1200
 pro-fer-ens se ad se-ctum pa-tris in cae-lis qui-
 bus sit-ter-ram et aqua-m et cin-deras et lignum et
 lapide-m et omnia quae visibilia sunt cre-avit
 et qui se-ctis an-gelis suis creavit et qui
 se-ctos homines in im-ago-nem suam creavit
 et qui se-ctos homines in im-ago-nem suam creavit
 et qui se-ctos homines in im-ago-nem suam creavit

Handwritten musical score for section VI, featuring a vocal line and piano accompaniment. The key signature is one sharp (F#) and the time signature is 4/4. The lyrics are written below the notes.

et qui se-ctos homines in im-ago-nem suam creavit
 et qui se-ctos homines in im-ago-nem suam creavit
 et qui se-ctos homines in im-ago-nem suam creavit

VI FA

Handwritten musical score for section VI, featuring a vocal line and piano accompaniment. The key signature is one sharp (F#) and the time signature is 4/4. The lyrics are written below the notes.

qui se-ctos homines in im-ago-nem suam creavit
 et qui se-ctos homines in im-ago-nem suam creavit
 et qui se-ctos homines in im-ago-nem suam creavit

Handwritten musical notation for the first system, featuring treble clef, a key signature of one flat, and lyrics in Indonesian. The lyrics include: "Siapa yang...", "Siapa yang...", "Siapa yang...", "Siapa yang...".

Handwritten musical notation for the second system, featuring treble clef, a key signature of one flat, and lyrics in Indonesian. The lyrics include: "Siapa yang...", "Siapa yang...", "Siapa yang...", "Siapa yang...".

Handwritten musical notation for the first system. It features a vocal line and piano accompaniment. The lyrics are: "Hi pax. Ce a mi nje. No mi".

Handwritten musical notation for the second system. It features a vocal line and piano accompaniment. The lyrics are: "mi an. po sus ce no in ex cel sis in cae lis. Si quis vult conseruari vitam aeternam, oportet eum seipsum perdere et venire sub crucem et seipsum sequi. Qui vult conseruari vitam aeternam, oportet eum seipsum perdere et venire sub crucem et seipsum sequi. Qui vult conseruari vitam aeternam, oportet eum seipsum perdere et venire sub crucem et seipsum sequi."

Handwritten musical notation, first system. Includes vocal line with lyrics: "In no sa-tyr-ic spi-rit i-ter-um i-ter-um".

Handwritten musical notation, second system. Includes vocal line with lyrics: "qui se-quitur in sae-cu-lis".

Handwritten musical notation, third system. Includes vocal line with lyrics: "in sae-cu-lis in sae-cu-lis".

Handwritten musical notation, fourth system. Includes vocal line with lyrics: "in sae-cu-lis in sae-cu-lis".

Handwritten musical notation, fifth system. Includes vocal line with lyrics: "in sae-cu-lis in sae-cu-lis".

Handwritten musical notation, sixth system. Includes vocal line with lyrics: "in sae-cu-lis in sae-cu-lis".

Handwritten musical notation, seventh system. Includes vocal line with lyrics: "in sae-cu-lis in sae-cu-lis".

Handwritten musical notation, eighth system. Includes vocal line with lyrics: "in sae-cu-lis in sae-cu-lis".

Handwritten musical notation, ninth system. Includes vocal line with lyrics: "in sae-cu-lis in sae-cu-lis".

Handwritten musical notation, tenth system. Includes vocal line with lyrics: "in sae-cu-lis in sae-cu-lis".

Handwritten musical notation, eleventh system. Includes vocal line with lyrics: "in sae-cu-lis in sae-cu-lis".

Handwritten musical notation, twelfth system. Includes vocal line with lyrics: "in sae-cu-lis in sae-cu-lis".

Handwritten musical notation on a single staff, featuring a treble clef, a key signature of one flat (B-flat), and a 2/4 time signature. The notation consists of a series of eighth notes grouped in pairs, followed by a bar line and a right-pointing arrow.

Handwritten musical notation for a three-part setting. The top staff is a vocal line with a treble clef and lyrics. The middle and bottom staves are accompaniment lines with bass clefs. The lyrics are: "Tou va d'arriver tu es si d'arriver ton gr-ou des ken-".

Handwritten musical notation for a multi-part setting with lyrics. The top staff is a vocal line with a treble clef. The bottom staves are accompaniment lines with bass clefs. The lyrics are: "ka waawo ye ta es se waawo ton gr-ou des ken- Tou va d'arriver tu es si d'arriver ton gr-ou des ken-".

Γιάννης Πιττός

ΡΥΜΗΘ ΕΥΝΗ

Μηνή Τεμπεράκι

Solo cem Do Sib lay, lay cem

To sa qui - tac sui yve phi. o.
To sa phi - pso pa phi pso.

Sib lam, solm lam cem

hi tis kai ja hi pa ME kai
hi tis kai ja hi pa ME kai

Solo cem Do Sib lam cem lam cem

tu toi ps om si st pa kai ker vor ps om

(H Pouta ypi Coko)

Do Sib lam silm Sib lam lam cem lam

Xw - pa kai toi tu ps om - si st pa kai

silm Sib FA silm. lam cem LA

ker vor ps om - xw - pa

Solo + Coro (at Pouta ypi)

su na o - pa va - va da on ha van oi ker. noi. vs

I VOLTA Do cem Do

av. to to Xw - pa en var si ko' tes kai si.

cem I VOLTA I VOLTA

ko pa av.

Lento $\text{♩} = \text{G}$
 cem

cem

cem

Ka tu-an-to-xw ka hej gra stavew pe-vou

slm ——— cem Do FA Do

XE pia tous Kpa. Te. ve thj Kkap Tlac Vag TO EXH.

cem cem Do

vl. ηροσ. ηε ναυ-νε αν ω. φα ηροσ.

Do ——— lam cem lam

HE - - - VOW vor on hai VOW ON 'A-

cem lam Do Stb LA cem

vor - - - on. on tou to-to. Xw ka

cem Do Stb lam cem lam Do Stb

Si van-Si. ko - tou Kan-Si. ko . . .

LA LA LA

hay SeH hno. pei ka vey va hay TO noi. pei SeH hno.

LA LA

pei ka vey va hay TO noi. pei SeH hno

LA 3 LA

psi kai -1/2 Voc Hag TO non psi

3 3 Do

3 3 Do

Do a(2) FINS

