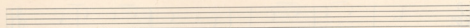
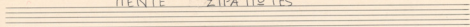
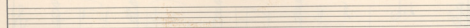
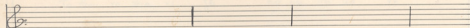


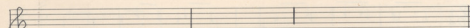
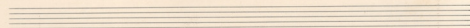
TENTE ΣΤΡΑΤΙΩΤΕΣ



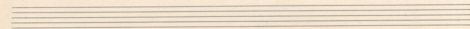
S

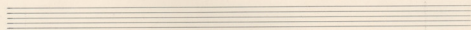
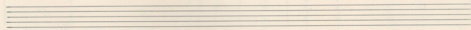
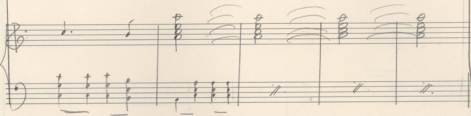
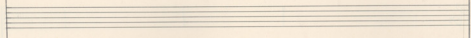
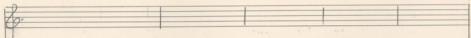
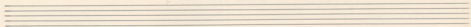


A system of musical notation. The upper staff has a treble clef and contains a melody: quarter note G4, quarter note A4, quarter note B4, quarter note C5, quarter note B4, quarter note A4, quarter note G4, quarter note F4, quarter note E4, quarter note D4, quarter note C4. The lower staff has a bass clef and contains a bass line: quarter note G2, quarter note A2, quarter note B2, quarter note C3, quarter note B2, quarter note A2, quarter note G2, quarter note F2, quarter note E2, quarter note D2, quarter note C2. The system ends with a double bar line and a repeat sign (//).



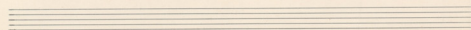
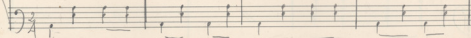
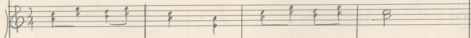
A system of musical notation. The upper staff has a treble clef and contains a melody: quarter note G4, quarter note A4, quarter note B4, quarter note C5, quarter note B4, quarter note A4, quarter note G4, quarter note F4, quarter note E4, quarter note D4, quarter note C4. The lower staff has a bass clef and contains a bass line: quarter note G2, quarter note A2, quarter note B2, quarter note C3, quarter note B2, quarter note A2, quarter note G2, quarter note F2, quarter note E2, quarter note D2, quarter note C2. The system ends with a double bar line and a repeat sign (//).

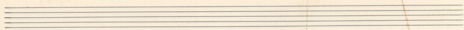




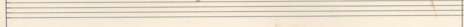
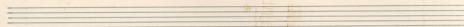
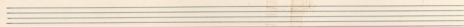
Handwritten lyrics in three lines:

Te	ves	Ipa'u	w	o	se	u	ru	oa	ve
Te	ves	Ipa'u	w	o	se	u	ru	oa	ve
Te	ves	Ipa'u	w	o	se	u	ru	oa	ve

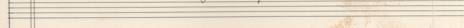
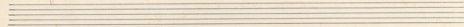




To Dou vo ra Ba yav si ue vi ca ve
 To Dou vo zai's zpu e ka pu on ua ve.
 To Dou ve xara vi je ka ju on ua ve.

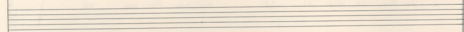



To Dou vo To Ba yav Iia pa on ca ve
 To Dou vo Tou's kw vi oi a ju on ua ve
 To Dou ve Ica va je a pa on on ua ve.

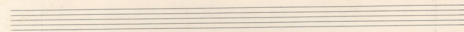
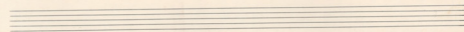





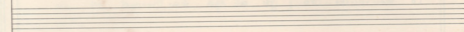
Musical staff with lyrics: Man va Man va Man va Man va TE VEE



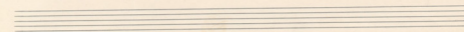
Musical staff with chords and bass line

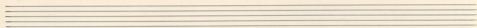


Musical staff with lyrics: Man ves Man ves Man you JES TE VEE Man ves

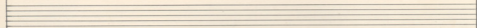


Musical staff with chords and bass line





Musical notation for the first staff, including lyrics: "Man ves Ma vou jes".



Musical notation for the second system, including piano accompaniment and a fermata.

