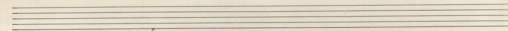
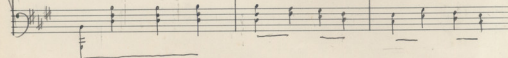
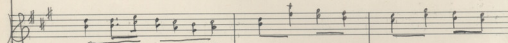
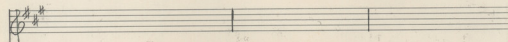
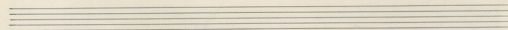
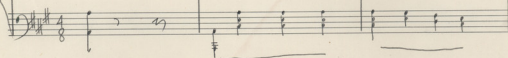
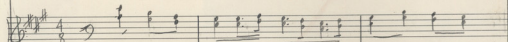
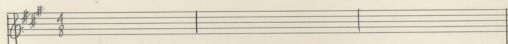
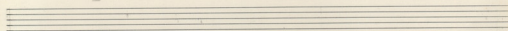
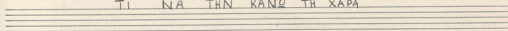


TI NA THN KANQ TH XAPA



ΤΙ ΝΑ ΤΗΝ ΚΑΝΩ ΤΗ ΧΑΡΑ

Kap - ος μου
Ται - ος γι'

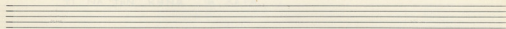
Τοιός είν' Πό πια που χυ τ'ά χυ - τ'ά αέρ'
σα σε γρά νι σεό μας γιό και - τ'εω να

Handwritten musical notation for the first system, featuring a vocal line with lyrics and a piano accompaniment. The lyrics are: *cu se epai - vers mp - om - xa* and *tra you bi - cw. pa o see - ray-*

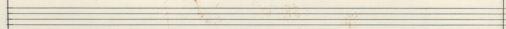
Piano accompaniment for the first system, showing chords and bass lines.

Handwritten musical notation for the second system, featuring a vocal line with lyrics and a piano accompaniment. The lyrics are: *pa kon za sou pro epai dox - Kai ou sw ka ze eai -* and *hos pou wri ju zhi fi jio kib jo ju pi jo ti -*

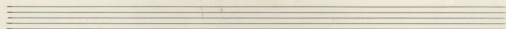
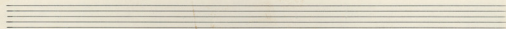
Piano accompaniment for the second system, showing chords and bass lines.



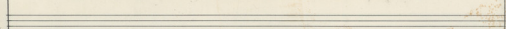
Handwritten musical notation in G major (one sharp) and 4/4 time. The melody is written in the treble clef. The lyrics are: *vhs gw* | | *Ti ya tw ka vu zu - xa*



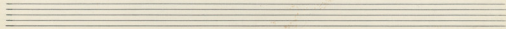
Handwritten musical notation in G major. The bass line is written in the bass clef. The first measure contains a whole note chord (G major). The second measure contains a half note chord (G major) with a fermata. The third and fourth measures contain quarter notes and eighth notes. The piece ends with a double bar line and repeat sign.

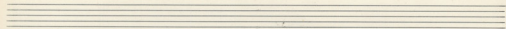


Handwritten musical notation in G major. The melody is written in the treble clef. The lyrics are: *pa* | | *xa pa olon* | *ou zu e -*



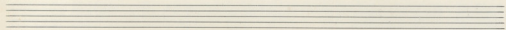
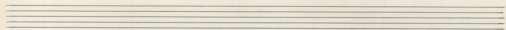
Handwritten musical notation in G major. The bass line is written in the bass clef. The first measure contains a whole note chord (G major). The second measure contains a half note chord (G major) with a fermata. The third and fourth measures contain quarter notes and eighth notes. The piece ends with a double bar line and repeat sign.





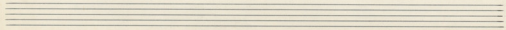
Handwritten musical notation in G major (one sharp) and 4/4 time. The melody begins with a quarter rest, followed by a quarter note G, a half rest, and then a sequence of eighth notes: G, A, B, A, G, F, E, D. The lyrics "Na zhi sm ko sw sta - Dav" are written below the notes.

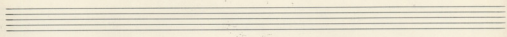
Handwritten musical notation for the piano accompaniment. The right hand starts with a whole note chord (G, B, D), followed by a series of chords and eighth-note patterns. The left hand plays a steady bass line with chords.



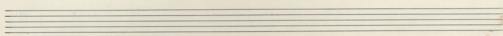
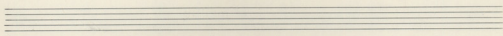
Handwritten musical notation in G major. The melody starts with a quarter note G, followed by a half note A, a quarter note B, a quarter note A, a quarter note G, and a quarter note F. The lyrics "va sto kpu o sw av - te -" are written below the notes.

Handwritten musical notation for the piano accompaniment. The right hand features chords and melodic lines. The left hand provides a bass line with chords and some rests.

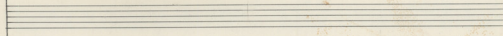




Musical score system 1. Treble clef, key signature of two sharps (F# and C#), 2/4 time signature. The melody begins with a whole note chord (D major) labeled "XU". The lyrics "Στο ομι τι Κο μουτ ναi δεε" are written below the notes. The bass line consists of chords, including a prominent F# major chord.



Musical score system 2. Treble clef, key signature of two sharps. The melody continues with the lyrics "va - - - - - και με σα του ο το ερε- Χει". A circled "5" is written above the final measure of the system.



Musical score system 3. Treble clef, key signature of two sharps. The melody concludes with the word "FIN" circled in blue. The bass line also concludes with a circled "5" and the word "FIN" written below the staff.

