

v "Arousi Jijo co qaraduro

Canto

1) 9      voi

2)

3)

LENTO  $\text{♩} = 50$

S e    si   pa   zu   oop    sa

Kjeo    zu    pa    va   tu   pa   sa

Handwritten musical notation for the first system. The vocal line is in G major (one sharp) and 2/4 time. It begins with a whole rest, followed by a half note G, and then a quarter note A. The lyrics "1<sup>η</sup> m' ga n pou xu vu" are written below the notes. The piano accompaniment consists of a treble and bass clef with chords and eighth notes.

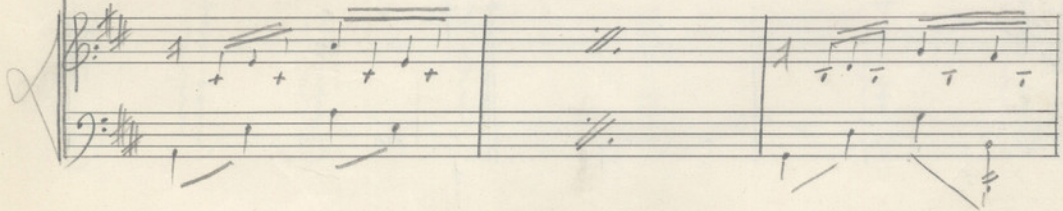
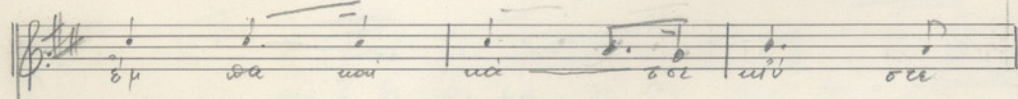
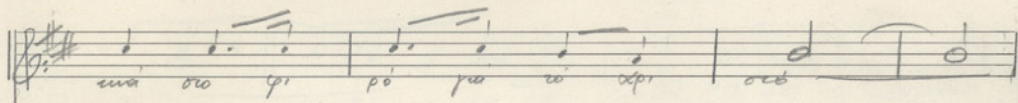
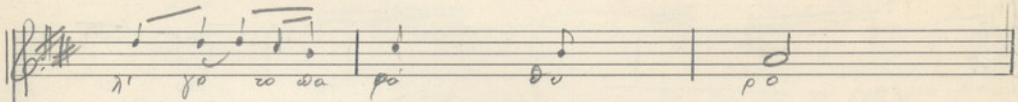
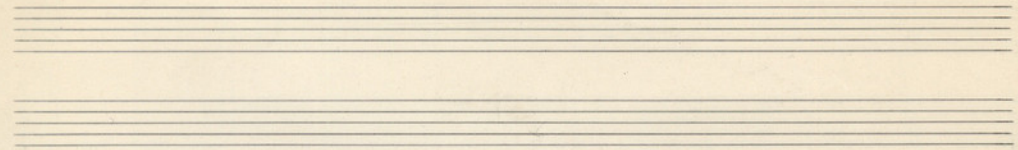
Handwritten musical notation for the second system, showing piano accompaniment. It consists of a treble and bass clef with chords and eighth notes. The system ends with double bar lines in both staves.

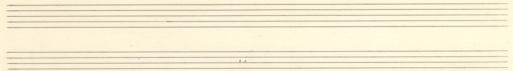
Handwritten musical notation for the third system. The vocal line is in G major and 2/4 time. It begins with a quarter note G, followed by quarter notes A and B, and then a quarter note C. The lyrics "ta upa da upa ro ope pa" are written below the notes. The piano accompaniment consists of a treble and bass clef with chords and eighth notes.

Handwritten musical notation for the fourth system, showing piano accompaniment. It consists of a treble and bass clef with chords and eighth notes. The system ends with double bar lines in both staves.

Handwritten musical notation for the fifth system. The vocal line is in G major and 2/4 time. It begins with a quarter note G, followed by quarter notes A and B, and then a quarter note C. The lyrics "kou iu ge pa va ps ra n A voi se" are written below the notes. The piano accompaniment consists of a treble and bass clef with chords and eighth notes.

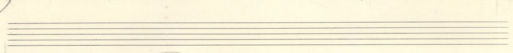
Handwritten musical notation for the sixth system, showing piano accompaniment. It consists of a treble and bass clef with chords and eighth notes. The system ends with double bar lines in both staves.





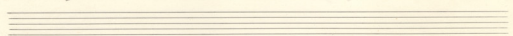
Musical staff with treble clef, key signature of two sharps (F# and C#), and 2/4 time signature. It contains a melody with notes and rests, and the word "pa" written below the first note. A slur covers the first two notes.

Musical staff with treble clef, key signature of two sharps, and 2/4 time signature. It contains a rhythmic accompaniment with eighth notes and rests, followed by two measures with double bar lines and repeat signs.



Musical staff with treble clef, key signature of two sharps, and 2/4 time signature. It contains a melody with notes and rests, and the word "wa" written below the first note. A slur covers the first three notes.

Musical staff with treble clef, key signature of two sharps, and 2/4 time signature. It contains a rhythmic accompaniment with eighth notes and rests, followed by two measures with double bar lines and repeat signs.



Musical staff with treble clef, key signature of two sharps, and 2/4 time signature. It contains a melody with notes and rests, and the word "wa" written below the first note. A slur covers the first two notes.

Musical staff with treble clef, key signature of two sharps, and 2/4 time signature. It contains a rhythmic accompaniment with eighth notes and rests, followed by two measures with double bar lines and repeat signs.