

Mikis Theodorakis

# Wj aipxanjs avem>8

PAVVAIA

Γαϊνη Δρωϊνη Καπαρτζαη

Handwritten musical score for Mikis Theodorakis's "Wj aipxanjs avem>8" (Pavvaia). The score is written on ten staves, each with a treble clef and a key signature of two sharps (F# and C#). The music is in 2/4 time. The lyrics are in Greek, and the score includes various musical notations such as notes, rests, and dynamic markings.

The score is divided into sections by circled numbers 5, 10, 15, 20, 25, 30, and 35. Above the staves, there are handwritten notes indicating chords and intervals: C.A, Sol#m, do#m, fa#m, LA, SI, SI7, SI9, MI MI, MI, MI, SI, MI, Sol#m, do#m, fa#m, SI+, MI, MI, Sol#m, SI, MI, Sol#m, SI7, MI MI, Do#, FA#, FA#, and Do#.

The lyrics are:
   
To vi sti ti ka prosw sto swa pe tu ti xre se Xpista to dafassi va 3 tu
   
kai Hous to so ap-vu sin h i p xw ste va
   
Xa ti ta pti Seiy mi re to xa to wti va nu po
   
kai pvv Xtw orai pti tu Vcello
   
Pocopia mass.
   
Vcello
   
LA Do# Sol# RE# LA RE# Do#+

Mé. So. ki. pa. íay o-ro - ve

FA# SI MI#

po kai sri Ba. sri sri pa. tra Solo KIBAPA

SI<sup>6#</sup> dotm FA#<sup>7</sup> SI<sup>6#</sup> Do#<sup>2</sup> 3 3 3 3

is. ap Kai. os. a. ve pas. El to vi. kas C.A.

SI Do# FA#

ME - pi qe pa mac sri. va.

LA<sup>b</sup> Do<sup>b</sup> Sol<sup>b</sup> RE<sup>b</sup> Vcello LA<sup>b</sup> RE<sup>b</sup>

sri kai sri sri sri sri sri kai - sro

mi<sup>b</sup>m RE<sup>b</sup> fat<sup>m</sup> mi<sup>b</sup>m LA RE<sup>b</sup> fat<sup>m</sup> mi<sup>b</sup>m

C.A. k'a. ra ka sri e. pa

RE<sup>b</sup> RE<sup>b</sup># Sol<sup>b</sup> Do#<sup>7</sup>

hid. kav Vcello

FA#<sup>7</sup> SI FA# SI<sup>6#</sup> SI<sup>6#</sup> Do#

C.Bas. C.A.

SI SI SI SI MI

Do# fat<sup>m</sup> fat<sup>m</sup> Sol<sup>b</sup> dotm FA#

Solo KIBAPA

Do#<sup>7</sup> fat<sup>m</sup> SI MI Mé. ris. ki.

Vcello

MI MI MI MI MI MI

keq a in song ta. kop kivi sri Vcello

SI MI

Do# fat<sup>m</sup>

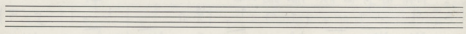
25

Handwritten musical score for voice and instruments. The score consists of ten staves. The first staff is for the voice, with lyrics in German and Latin. The second staff is for the piano (piano). The third staff is for the cello (Vcllo). The fourth staff is for the solo keyboard (Solo Klavier). The fifth staff is for the voice, with lyrics in German and Latin. The sixth staff is for the piano. The seventh staff is for the voice, with lyrics in German and Latin. The eighth staff is for the piano. The ninth staff is for the cello. The tenth staff is for the piano. The score includes various musical notations such as notes, rests, and dynamics. The lyrics are:   
 Do# factm factm Sol# do#m Do#   
 Tu wis ta que - - - va - ta C. Ang   
 factm Sol# do#m FA#   
 Je - ue pas ve - pinv C. Ang   
 MI do# + factm SI   
 kuu. et tu vi karu JE - JE uv   
 MI loam lob 6# MI   
 Solo Klavier   
 MI MI MI MI MI   
 Vcllo   
 MI   
 105 Me d' ai no ra sw - ma sw pa Sou - vu to   
 do#m FA# SI SI (K. 6) saltm MI   
 hau po no san se. na. ju. si quo vis à ne. tu   
 do#m FA# FA# FA# FA# FA#   
 re. vs C. Ang   
 FA# 9# FA# 12 SI (+ piano) SI SI Do# +   
 120 JE - xv. tag   
 FA# ze#m SI saltm Do# SI   
 125 nav. tu. d' ai pa nu d' ai. ju. nu 130   
 saltm MI do#m FA# SI SI SI   
 Vcllo   
 SI SI FA# 7 FA# 7 SI SI   
 140   
 do#m 7 do#m 7 FA# MI

Handwritten musical score with Greek lyrics and performance instructions. The score is written on ten staves, each with a treble clef and a key signature of two sharps (F# and C#). The lyrics are in Greek, and the music includes various performance markings such as dynamics, articulation, and tempo changes.

Lyrics and markings on the staves:

- Staff 1: SI SI SI SI<sup>7</sup> SI<sup>7</sup> MI (145)
- Staff 2: ME. KU. M. ja. Ge. h. Bpa. Xi<sup>7</sup> ki'e. Yu'a. na. ka. - Th. vi Xi<sup>7</sup> MI MI SI<sup>7</sup> SI<sup>7</sup> MI MI
- Staff 3: ho. vas. pou. a. ve Bai. va o. vi (155) poi' omis. Spa. kas. kai. omis. *for# F# for# #4* SI LA
- Staff 4: HE. Pts C. Angl. (160) MI MI MI FA# SI<sup>7</sup> SI<sup>7</sup>
- Staff 5: ws Tai. va. ta. Tou. h. nou (165) kai. Tai. Bou. MI MI SI SI
- Staff 6: Ista. na. pa. na. va kou Tou. ko. spou. Tai. xwu. sta. nou SI MI MI *Sol#m dotm*
- Staff 7: Tai. xwu. sta. kop. hi. sou. kou qai. hi. kai. kai. nou. ol. *for#m* SI SI SI SI
- Staff 8: ka. kai. he. tel (175) tai. vau. Vcello SI<sup>12</sup> MI MI *loum*
- Staff 9: Tai. ko. spou. Tai. xwu. sta. nou. *loum* MI MI *Sol#m dotm*
- Staff 10: Tai. xwu. sta. kop. hi. sou kou qai. hi. (185) kai. kai. pi8. ol. *for#m* SI SI SI SI
- Staff 11: Kai. kai. he. tel tai. vau Solo PIANO SI MI



Sao Piano

do<sup>na</sup> sol<sup>te</sup> MI

C. Ang.

sol<sup>te</sup> fact<sup>us</sup> fact<sup>us</sup> SI MI

ME (195) Ti Bp<sup>o</sup>. X<sup>o</sup> TO- KO

LA SI LAB LAB

ki. soo xi-ve-tau. Bp<sup>o</sup> X<sup>o</sup> ut om-ni-a se-cre-ta et in-cog-ni-ta

REB MIB MIB DO DO

ko. soo Sao KIBAPA

fact<sup>us</sup> LAB dom MIB FA sibm MIB

va-te-ro tu-um tu-um. Si-mi-li-ter et in-ter-ve-ni-ens

LAB fact<sup>us</sup> dom LAB

KA-ri-ma-ti-um ex-ve-ni-tu-m C. Angl.

DO sibm sibm MIB LAB

hail (195) ve-cto

REB MIB 7b LAB

LA MI (195) RE MI LA

LA MI (195) RE MI LA

sim MI do<sup>na</sup> fact<sup>us</sup> sim MI LA LA

ME - ku. pau. Ti-ty u. pa-ter-um et fi-li-um et sp-ri-tu-m sa-n-ctum et do-mi-num et con-si-sten-tem

LA MI RE MI LA

MI MI LA

MI MI LA sim MI do<sup>na</sup> fact<sup>us</sup> sim MI

230  
 Tai. na. Inoi. sey. fai. pia kai. no  
 LA LA LA MI MI<sup>9#</sup> Vc. —

235  
 TC. yu. pi. sou ht. pou o. pappu ko. pi. tom. th. pu. triy  
 LA MI Ruel RE<sup>Ruel</sup> MI<sup>7+</sup> LA Vc. —

240  
 pou ft. na. sou. ai. ta. Bpo. Xi. kai. se. pou Vc. —  
 sim MI do#m re# LA MI<sup>7+</sup> LA

245  
 - yia. kai. toi Vcello  
 Salt<sup>7</sup> MI<sup>7+</sup> LA LA MI RE MI<sup>+</sup>  
 Et. In. vi. kai. Ba. - las. ri. 250 vai ob

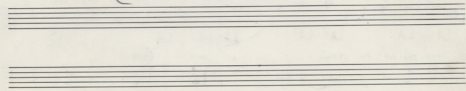
250  
 LA sim MI<sup>9#</sup> do#m factm  
 Ruel (Furor.) A. ve. Ba. th. Bpo. Xi. an. th. ht. pi. tis. ko. va

255  
 sim MI LA LA do#m LA<sup>7#</sup> do# 4# LA<sup>7#</sup> factm 9#  
 260  
 2# 5# 2#  
 2# 5# 2#  
 Kai. Gaj. d

260  
 RE MI MI LA salt<sup>7</sup> MI<sup>9#</sup> + + LA  
 Ko. spis. do. 265 tau. pta. ero. ve. po

270  
 Ba. thni. he. roni. kar. sin. - sou  
 do#m RE MI<sup>7</sup> LA factm SI MI DO# factm

275  
 Ba. thni. sou. o. ven. en. - en. sou  
 do#m MI MI SI<sup>9#</sup> MI<sup>7</sup> LA



Handwritten musical staff with notes, rests, and a circled measure number 285. Above the staff, the lyrics "Ka Twa-nh Tai" are written.

Handwritten musical staff with notes and a circled measure number 289. Above the staff, the lyrics "pou-xa sou pas sou Si Si" are written.

Handwritten musical staff with notes and a circled measure number 290. Above the staff, the lyrics "ya-tor sou sou si-á-ka Top sou th-jon kai sou Th-xo" are written.

Handwritten musical staff with notes and a circled measure number 292. Above the staff, the lyrics "hu-va MI MI VOI hi-ken-rou" are written.

Handwritten musical staff with notes and a circled measure number 293. Above the staff, the lyrics "hol-fe-ye ee noi-n hu" are written.

Handwritten musical staff with notes and a circled measure number 295. Above the staff, the lyrics "MI Vcello LA LA LA MI" are written.

Handwritten musical staff with notes and a circled measure number 296. Above the staff, the lyrics "MI MI MI LA LA" are written.

Handwritten musical staff with notes and a circled measure number 297. Above the staff, the lyrics "Su xri e mi ski nto kate i - vo pa" are written.

Handwritten musical staff with notes and a circled measure number 298. Above the staff, the lyrics "Ta. Kir-oo pa-vo vi or pa-vois" are written.

Handwritten musical staff with notes and a circled measure number 299. Above the staff, the lyrics "tu ex-spi-ru e-oi. to kai tu ep-pi-o to- vo-tou vt" are written.

Handwritten musical staff with notes and a circled measure number 300. Above the staff, the lyrics "pau or ko. hu-mep-seu w ta nu. su ta. ee" are written.

Handwritten musical staff with notes and a circled measure number 301. Above the staff, the lyrics "tha-tu ko-pi tuw LA LA RE RE RE LA" are written.

LA LA LA LA RE RE

ha tu tuvs C. Angl. 330 Bre. 10 Xou. pa. tu. ho

RE laum laum laum MIB MIB

breu. vsu npa su na. ai! ai! pa tu. pa. tu. ho u. kw. - u. ten

RE RE FA# FA# FA# DO#

DO# DO# FA#

335 Sin Xw. pa. to pa. ho 340 ho. to. or pa. va. to E - ni. ca.

FA# Sib Sib Sib FA# FA# FA#

w. v6 3 345 3

FA# Sib Sib LA MI#

345 Ma. jo E. qu.

LA LA dothm dothm

350 an. m. pi. pa. u. pa. os vi. Xou. oti

RE SI LA MI LA LA MI#

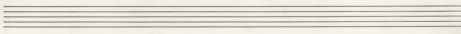
355 or. - u. ve ho 5 Vcello

LA dothm Sim LA

360 Ki. ho. to. au. hu. a. vo. Xto VC 3 2 3

MI# LA dothm MI#

365 du. ho om VOLTA SUBITO





VC E XAW mjahe vr <sup>370</sup> panta paitin ooo kisi

MI 92 LA 7 RE RE mim

370 ke pgy f. jar paha vauv Xau cis ar Ma Sol suw Gu-jar te-

LA sim factum Sol

veg <sup>375</sup> ko veg <sup>380</sup> B

RE mim ooo mHE ba gu on RE <sup>380</sup> mHE mHE RE

RE mim LA factum LA tu. kisi hai-

LA MI LA RE factum sim

pa fa-paa hira ooo ar. <sup>385</sup> E- pa ooo kisi hira ooo Gu-jar su fua

factum mim LA RE

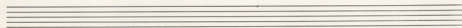
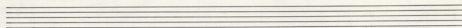
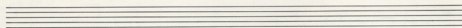
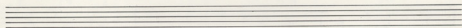
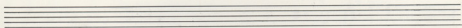
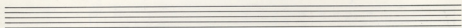
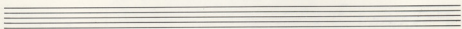
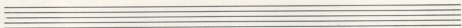
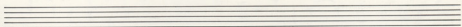
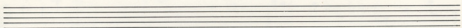
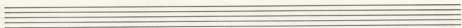
RE FA4 MI laca

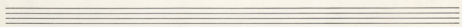
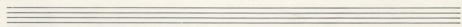
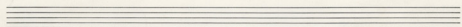
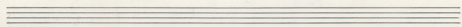
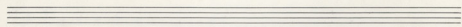
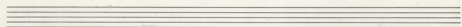
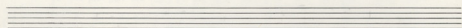
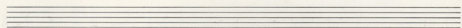
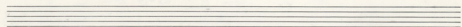
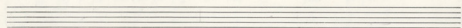
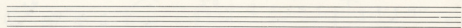
MI zem Sol Dot

all FINE

Sib LA LA

Empty musical staves for accompaniment.



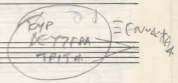


ΜΑΡΓΚΟ

ΝΕΚΡΟΑΔΕΛΦΟ

ΣΑΡΝΕΛΔΟΥ 13 ΕΥΜΠΡΟΣΤΟ, ΔΕΛΦΩΝ

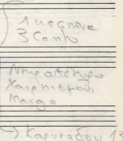
7230 674  
7226 915-15



SP ΙΑΤΕΡΝΑ ΜΙΚΗ ΓΕΩΜΕΤΡΑΚΗ  
105521NA 7226 913 ΔΙΕΒΟΛ

ΩΣΑΧΙΡΣΩΒΛΗΣ

ΡΑΨΩΔΙΑ



ΟΔΗΓΟΣ

Σαρνελδου 13  
nnt pia δρανισαρχε

ΜΙΛΥ ΕΥΑΓΓΕΛΙΟΥ

# Ὡς ἀρχαῖος ἀνεμῶς

ΠΑΥΛΙΑ

ΓΑΙΟΣ ΔΑΝΙΗΛ ΚΑΡΑΓΙΩ

Handwritten musical score for the song "Ὡς ἀρχαῖος ἀνεμῶς" (As an old wind). The score is written on ten staves in G major (one sharp) and 2/4 time. It includes Greek lyrics and various musical notations such as chords, dynamics, and performance instructions.

**Staff 1:** Chords: C.A, Sol<sup>♯</sup>m, do<sup>♯</sup>m, fa<sup>♯</sup>m, LA<sub>3</sub>. Lyrics: Ὡς ἀρχαῖος ἀνεμῶς

**Staff 2:** Chords: Sol<sup>♯</sup>m, do<sup>♯</sup>m, fa<sup>♯</sup>m, LA. Lyrics: Ὡς ἀρχαῖος ἀνεμῶς

**Staff 3:** Chords: MI, SI<sup>7</sup>, SI<sup>9</sup>, MI MI. Lyrics: Τὸ πνεῦμα τοῦ κυρίου ἔστιν ὡς ἄνεμος ἁρπάζων ἄνθη

**Staff 4:** Chords: MI, Sol<sup>♯</sup>m, do<sup>♯</sup>m, fa<sup>♯</sup>m, LA. Lyrics: καὶ ἔσται ὡς ἄνεμος ἁρπάζων ἄνθη

**Staff 5:** Chords: SI, SI<sup>7</sup>, SI<sup>9</sup>, MI MI. Lyrics: καὶ ἔσται ὡς ἄνεμος ἁρπάζων ἄνθη

**Staff 6:** Chords: MI, Sol<sup>♯</sup>, do<sup>♯</sup>m, fa<sup>♯</sup>m, SI<sup>+</sup>. Lyrics: ἡ ἀνάθη ἀναθήσει τὸ κίβητος ἡ ἀνάθη

**Staff 7:** Chords: MI, Sol<sup>♯</sup>m, fa<sup>♯</sup>m, SI<sup>7</sup>, MI. Lyrics: ἡ ἀνάθη ἀναθήσει τὸ κίβητος ἡ ἀνάθη

**Staff 8:** Chords: MI<sup>♯</sup>, Do<sup>♯</sup>, fa<sup>♯</sup>m, SI, MI, Sol<sup>♯</sup>m. Lyrics: καὶ ἔσται ὡς ἄνεμος ἁρπάζων ἄνθη

**Staff 9:** Chords: Sol<sup>♯</sup>, LA<sup>7</sup>, SI<sup>7</sup>, MI MI. Includes instruction: poco più mosso. Lyrics: ἡ ἀνάθη ἀναθήσει τὸ κίβητος ἡ ἀνάθη

**Staff 10:** Chords: SI, Do<sup>♯</sup>, FA<sup>♯</sup>, FA<sup>♯</sup>. Includes instruction: Vcello. Lyrics: ἡ ἀνάθη ἀναθήσει τὸ κίβητος ἡ ἀνάθη

**Staff 11:** Chords: LA, Do<sup>♯</sup>, Sol<sup>♯</sup>, RE<sup>b</sup>, LA, RE<sup>b</sup>, Do<sup>♯</sup>. Lyrics: ἡ ἀνάθη ἀναθήσει τὸ κίβητος ἡ ἀνάθη

Mé. So. ki. pot. féy oro - ve

FA# SI MI#

po kai omi Ba. Vami oro pot. Tia Solo KI BAPA

SI<sup>6#</sup> dotm FA#7 SI<sup>6#</sup> Do#7 3 3 3 3

W. ap Kai. os. ce. ve kis-Et la vi. kis C.A.

SI Dot FA#

ME - Et PE po Hae ora. vn.

LA# Dot Sol# RE# LA# RE#

ora kai omi So. jas ses Vcello

mi#m RE# fatm mi#m LA RE# fatm mi#m

C.A. Kio. ro ksi omi C. En

RE# RE#7# Sol# Do#7

Kio. hov Vcello

FA#7 SI FA# SI<sup>6#</sup> SI<sup>6#</sup> Do#

g C.Bas. C.A.

SI SI SI SI MI

Do# fatm fatm Sol# dotm FA#

Solo KI BAPA

Do#7 fatm SI MI

Vcello Me. ris. ki.

MI MI MI MI MI MI

keq a to sig 78. kor kivi oro Vcello

SI MI

Vc  $\phi$  Ten vw Ten *mp-f-picc*

Do# fa#m fa# Sol# do#m Do#

Ta wis ta' Sou - - - va - ta C. Ang

fa#m Sol# do#m FA#

ye - up' yos ve - pan C. Ang

MI do# + fa#m SI

MI loom kar. e' h vi. kar' ie - ie - uv

MI loom loob G# MI

Solo K. SAPA Vcello

MI MI MI MI MI

105 Me o' a' no' ra' sw - pa. sw. pa' Sou - vw' to

do#m FA# SI SI (K.S) sol#m MI

110 sou se. m. yoi. Si' sw' ris. a' ne' ne

do#m FA# FA# FA# FA#

115 vns C. Ang

FA# 9# FA# 9# SI (+Pima) SI SI Do#

120

FA# ze#m SI sol#m Do# SI

125

130

sol#m MI do#m FA# SI SI SI

Vcello

135

SI SI FA# FA# SI SI

140

do#m do#m FA# MI