

15

Handwritten musical score for measures 15-20. The score includes parts for Flute (Fl.), Oboe (Ob.), Clarinet (Cl.), Piano (Piano), Violin I (Vln I), Violin II (Vln II), Viola (Vcl), and Cello (Cb.). The Flute part has lyrics: "Be-a te-um Be-a te-um - vo". The Oboe part has lyrics: "Be-a te-um Be-a te-um". The Piano part has lyrics: "Be-a te-um Be-a te-um". The Violin I part has lyrics: "Be-a te-um Be-a te-um". The Viola part has lyrics: "Be-a te-um Be-a te-um". The Cello part has lyrics: "Be-a te-um Be-a te-um".

25

Handwritten musical score for measures 25-30. The score includes parts for Flute (Fl.), Oboe (Ob.), Clarinet (Cl.), Piano (Piano), Violin I (Vln I), Violin II (Vln II), Viola (Vcl), and Cello (Cb.). The Flute part has lyrics: "Be-a te-um Be-a te-um". The Oboe part has lyrics: "Be-a te-um Be-a te-um". The Piano part has lyrics: "Be-a te-um Be-a te-um". The Violin I part has lyrics: "Be-a te-um Be-a te-um". The Violin II part has lyrics: "Be-a te-um Be-a te-um". The Viola part has lyrics: "Be-a te-um Be-a te-um". The Cello part has lyrics: "Be-a te-um Be-a te-um".

Handwritten musical score for measures 30-33. The score includes parts for Flute (Fl.), Bassoon (B.), Clarinet (Cl.), Violin I (Vcl. I), Violin II (Vcl. II), Viola (Vc.), and Cello (Cb.).

Lyrics: *tu-wo pace orewi vs fu nou ym (30) popye popye er ail m*

Measure 30: Flute and Clarinet play a melodic line. Bassoon and Viola play chords. Violin I and II play a rhythmic pattern. Cello and Double Bass play a bass line.

Measures 31-33: The Flute and Clarinet continue their melodic line. The Bassoon and Viola play sustained chords. The Violin I and II parts continue with their rhythmic pattern. The Cello and Double Bass play a steady bass line.

5

Handwritten musical score for measures 34-37. The score includes parts for Flute (Fl.), Bassoon (B.), Clarinet (Cl.), Violin I (Vcl. I), Violin II (Vcl. II), Viola (Vc.), and Cello (Cb.).

Measure 34: Flute and Clarinet play a melodic line. Bassoon and Viola play chords. Violin I and II play a rhythmic pattern. Cello and Double Bass play a bass line.

Measures 35-37: The Flute and Clarinet continue their melodic line. The Bassoon and Viola play sustained chords. The Violin I and II parts continue with their rhythmic pattern. The Cello and Double Bass play a steady bass line.

Measure 37: The score ends with a double bar line. There is a handwritten signature and the text "13. 12. 87" and "A. G. M." in the bottom right corner.

Flauto *Flauto*
 Oboe *Oboe*
 Clarinet *Clarinet*
 Piano *Piano*
 Violini I *Violini I*
 Violini II *Violini II*
 Alti *Alti*
 Violoncello *Violoncello*
 Contrabbasso *Contrabbasso*

Beate/ha rampa un ist. l'as
Messa

Flauto *Flauto*
 Oboe *Oboe*
 Clarinet *Clarinet*
 Piano *Piano*
 Violini I *Violini I*
 Violini II *Violini II*
 Alti *Alti*
 Violoncello *Violoncello*
 Contrabbasso *Contrabbasso*

15
chi to Suspa au vt poi to pajo an ke vi curri a f pol

Flute 1 *Be-are-ka na-ya voi-ya* *ts*

Ob

Kb

Piano

Vn I

Vn II

Alc

Vc

Cb

Flute 1

Ob

Kb

Piano

Vn I

Vn II

Alc

Vc

Cb

2s

- 7

Handwritten musical score for measures 27-30. The score includes parts for Flute (Fl.), Oboe (Ob.), Clarinet (Kf.), Piano (Piano), Violin I (Viol. I), Violin II (Viol. II), Viola (Vcl.), Celli (Cb.), and Bassoon (Fag.). The key signature is two sharps (F# and C#), and the time signature is 4/4. The lyrics are written below the vocal line.

Lyrics: *Ue A° Ws Oe a f s M Ska oi Skap Nw, sau Twd Karf*

Measure numbers 27, 28, 29, and 30 are indicated at the top of the staves.

Handwritten musical score for measures 31-35. The score includes parts for Flute (Fl.), Oboe (Ob.), Clarinet (Kf.), Piano (Piano), Violin I (Viol. I), Violin II (Viol. II), Viola (Vcl.), Celli (Cb.), and Bassoon (Fag.). The key signature is two sharps (F# and C#), and the time signature is 4/4. The lyrics are written below the vocal line.

Lyrics: *vo kau Xarru au sng Jpa' fmg* and *Ap-Xh-wopia ka neif fte ab pm*

Measure numbers 31, 32, 33, 34, and 35 are indicated at the top of the staves.

CHORO
HA. *Pau tu fcs h* *er-no* *ke-ci ju* *Shi* *yo*

PIANO

SYNT.

HA *o-va-pa* *no* *nt ca* *astm o-pi* *pa tu*

PIANO

SYNT.

HA *gaf h.* *o aif d* *upus kich* *o- no-pu tu u* *Passo-pa v&pa p&pa p&pa p&pa*

PIANO

SYNT.

HA *ka fjo oho u*

PIANO

SYNT.

EVENH BEATRIZ

(B) *Ente parte meivas*

Ampl. : vi v&pa p&pa no m&no h f&pa

FLAUTO

em D&pa

Ampl. : vi v&pa p&pa h CA. h CLARO.

h v&pa f&pa

TIS NUXTES

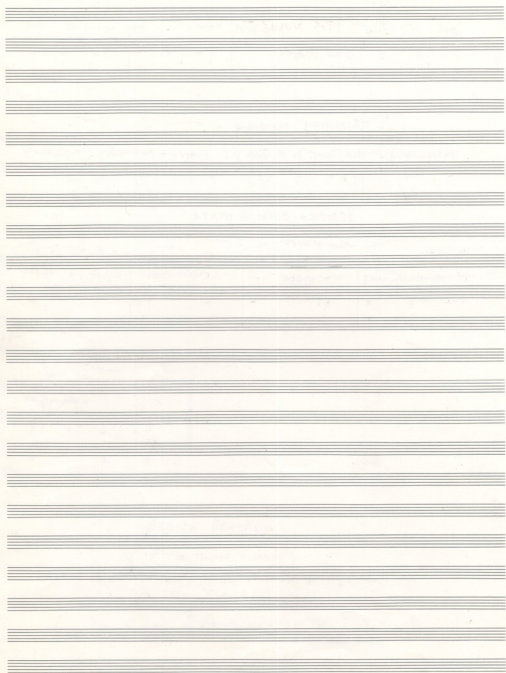
Solo PIANO
+ DRUMS

ΤΡΑΖΟΝΤΑΣ ΜΟΥΣΙΚΗ

ΧΟΥΣΑΡΑΝΟΜΙΚΑ - ΟΒΟΕ (ΑΙΜΓ. Η ΤΙ ΓΕΜΜΙ) - ΠΙΑΝΟ + ΚΟΥΙΝΤΕΤΟ (ΛΙΣΣΟΝΟ)

ΒΕΑΤΡΙΚΗ ΕΙΝΑΙ Η ΝΥΧΤΑ

Solo PIANO
+ FLAUTO PAPA (ΛΙΣΣΟΝΟ) Η ΤΙ ΓΕΜΜΙ



TRIZONTAJ NABUŠIHA

$\text{♩} = 66$

OPERA 8^{va} $\frac{3}{4}$

APRONIA 8^{va} $\frac{3}{4}$

(M. r. cor. fa)

VENIA 8^{va} $\frac{3}{4}$

PIANO 8^{va} $\frac{3}{4}$

Viol. I 8^{va} $\frac{3}{4}$

Viol. II 8^{va} $\frac{3}{4}$

Alto 8^{va} $\frac{3}{4}$

Vc 8^{va} $\frac{3}{4}$

CB 8^{va} $\frac{3}{4}$

LA LA fano sim M. r. LA LA

piz

OPERA 8^{va}

Alto 8^{va}

Viol. 8^{va}

Piano 8^{va}

MI LA MI

pa. for mo trua kh. a-uf. Ban-ven. d'af-

Viol. I 8^{va}

Viol. II 8^{va}

Alto 8^{va}

Vc 8^{va}

CB 8^{va}

Handwritten musical score for the first system, including parts for Flute (Fl.), Clarinet (Cl.), Bassoon (Fag.), and Piano (Piano). The score is written in treble clef with a key signature of two sharps (F# and C#). The time signature is 4/4. The music features various rhythmic patterns, including eighth and sixteenth notes, and rests. A '4' is written above the staff in the second measure.

Handwritten musical score for the second system, including parts for Violin I (Viol I), Violin II (Viol II), Viola (Alc.), Violoncello (vc), and Contrabasso (Cb). The score is written in treble clef with a key signature of two sharps (F# and C#). The time signature is 4/4. The music features various rhythmic patterns, including eighth and sixteenth notes, and rests. A '4' is written above the staff in the second measure.

Handwritten musical score for the third system, consisting of ten empty musical staves for the continuation of the piece.

Handwritten musical score on a page with 20 staves. The notation is extremely faint and illegible. The page contains several measures of music, with some notes and stems visible in the upper half. The lower half of the page consists of empty staves.

14

Handwritten musical score for system 14. It consists of five staves. The first staff has a dynamic marking *F* and a circled *1*. The second staff has a circled *5* and a circled *1*. The third staff has a circled *5* and a circled *1*. The fourth staff has a circled *5* and a circled *1*. The fifth staff has a circled *5* and a circled *1*. There are various musical notations including notes, rests, and slurs.

15

Handwritten musical score for system 15. It consists of five empty staves.

Handwritten musical score for system 16. It consists of five staves. The first staff has the lyrics: "Be a rei in e. no. do. u. po. a. pa. ri. vo. se. qu. i. ter. de. i." The second staff has musical notation. The third staff has musical notation. The fourth staff has musical notation. The fifth staff has musical notation.

16

Handwritten musical score for system 17. It consists of five staves. The first staff has the dynamic marking *mf* and the word *caes*. The second staff has the dynamic marking *mf* and the word *caes*. The third staff has the dynamic marking *mf* and the word *caes*. The fourth staff has the dynamic marking *mf* and the word *caes*. The fifth staff has the dynamic marking *mf* and the word *caes*. There are various musical notations including notes, rests, and slurs.

4.

2

20

RR

OB

OB

Fg

Com

Tp

Tp

Tp

Tim

Pac

Handwritten notes: *F*, *sl*, *mp*, *h*, *lm*, *Ph*

Drum

Piano

KB

Handwritten notes: *Re-a spin Re-a Tom*, *h*, *Ph*

21

Vcl I

Vcl II

Vi

Vc

Cb

Handwritten notes: *F*, *h*, *Ph*

33

6

Handwritten musical score for orchestra, page 33. The score includes staves for Flute (Fl), Bassoon (B), Clarinet (Cl), Fagotto (Fg), Corno (C), Tromba (Tr), Trombo (Tb), Tuba (Tu), Fagotto (Fg), Piano (P), Violino I (V1), Violino II (V2), Viola (Va), Violoncello (Vc), and Contrabbasso (Cb). The music is written in 2/4 time and includes various dynamics such as *mf*, *pp*, and *ppp*. There are several circled numbers (33, 35) and some handwritten annotations like "Ppp" and "Pppp".

39

FINE

Cont 7

leaves out

Colo

FINE

P

P

39

P

FINE

45

Violins I
Violins II
Violas
Cellos

45

Flutes
Oboes

45

Clarinets
Bassoons

45

Saxophones

45

Trumpets

45

Trombones

45

Euphonium
Baritone

45

Saxophones

45

Flutes

45

Oboes

45

Clarinets

45

Bassoons

45

Saxophones

45

Trumpets

45

Trombones

45

Euphonium
Baritone

Handwritten musical score for the first system, consisting of five staves. The top staff has a treble clef and contains a series of rhythmic figures, possibly representing a vocal line. The second staff has a bass clef and contains similar rhythmic notation. The third staff has a treble clef and contains rhythmic notation. The fourth and fifth staves have bass clefs and contain rhythmic notation. There are some markings above the first staff, possibly indicating dynamics or articulation.

Handwritten musical score for the second system, including vocal lines with lyrics and piano accompaniment. The top staff has a treble clef and contains the lyrics: "du ten pro" followed by "Be-ni-ti Be-ni-ti". The second staff has a bass clef and contains the lyrics: "Be-ni-ti Be-ni-ti". The third and fourth staves have bass clefs and contain rhythmic notation. The fifth staff has a bass clef and contains rhythmic notation. There are some markings above the first staff, possibly indicating dynamics or articulation.

Handwritten musical score for the third system, including vocal lines with lyrics and piano accompaniment. The top staff has a treble clef and contains the lyrics: "Be-ni-ti Be-ni-ti". The second staff has a bass clef and contains the lyrics: "Be-ni-ti Be-ni-ti". The third and fourth staves have bass clefs and contain rhythmic notation. The fifth staff has a bass clef and contains rhythmic notation. There are some markings above the first staff, possibly indicating dynamics or articulation.

Handwritten musical score for the fourth system, consisting of five staves. The top staff has a treble clef and contains a series of rhythmic figures. The second staff has a bass clef and contains similar rhythmic notation. The third staff has a treble clef and contains rhythmic notation. The fourth and fifth staves have bass clefs and contain rhythmic notation. There are some markings above the first staff, possibly indicating dynamics or articulation.

2 OTAN OI MEPEK KATEBAINSUN

J. = 63

Handwritten musical score for various instruments including R, B, O, Fy, G, G, T, T, T, and K. The notation is mostly blank staves with some initial notes and rests.

O tani, ke oty kate. Bai, van xu pa

J. = 63

Handwritten musical score for Piano (P) and K. The Piano part includes detailed notation with dynamics like *pp*, *p*, and *mf*. The K part includes dynamics like *mf* and *p*. The score is divided into two systems, each starting with a tempo marking of J. = 63.

Flute (Fl) and Oboe (Ob) staves. The Flute part has a melodic line with slurs and accents. The Oboe part has a similar melodic line. There are some markings above the staves, possibly indicating fingerings or breath marks.

Clarinet (Cl) staff. The part contains some notes and rests, with a slur over the first few measures.

Trumpet (Tr) staff. The part is mostly empty, with some faint markings.

Trumpet (Tr) staff. The part is mostly empty, with some faint markings.

Trumpet (Tr) staff. The part is mostly empty, with some faint markings.

Voice (V) staff with lyrics: "In Be-ni-dic-tio-nem tu-am Do-mi-ne De-us Pa-ter Om-ni-po-tens De-us Pa-ter Om-ni-po-tens".

Piano (P) staff. The part contains complex chordal accompaniment with many notes and slurs.

Kornet (K) staff. The part is mostly empty, with some faint markings.

Violin I (Vln I) staff. The part contains a melodic line with slurs and accents.

Violin II (Vln II) staff. The part contains a melodic line with slurs and accents.

Viola (Vla) staff. The part contains a melodic line with slurs and accents.

Violoncello (Vcl) staff. The part contains a melodic line with slurs and accents.

Double Bass (Cb) staff. The part contains a melodic line with slurs and accents.

Fl & Bb & Clarinet in Bb & Bassoon

Coro & Trombones (Trombe) & Trumpets (Trombe)

Violin I & Piano

Violin II & Cello

Violin I & Violin II & Viola & Violoncello & Contrabasso

f

19

Klingelte mir die... die... die... die... die... die... die... die...

Fl B_b

Ob C

Cl B_b

Fg F

Coro B_b

Fag B_b

Ten B_b

Brc F

Chor B_b

pudo

Piano B_b

Kb B_b

Cono B_b

B_b

Vcl I B_b

Vcl II B_b

Vcl B_b

Vc F

Cb F

30

Handwritten musical notation for the first system. It features a vocal line on a single staff and piano accompaniment on two staves. The notation includes various notes, rests, and dynamic markings such as *mf* and *ff*. There are also some handwritten annotations like "D2" and "B2" in the piano part.

A series of empty musical staves, likely intended for a second system of music.

E-ju-ke-ko-ki-to-oi-ya-ya-ya

Handwritten musical notation for the third system, featuring a vocal line and piano accompaniment. The piano part includes complex rhythmic patterns and dynamic markings.

A series of empty musical staves, likely intended for a fourth system of music.

(35)

Handwritten musical notation for the fifth system, featuring a vocal line and piano accompaniment. The notation includes various notes, rests, and dynamic markings.

Handwritten musical score for page 16, featuring multiple staves with musical notation and instrument labels.

The score includes the following parts and instruments:

- Flute (Fl):** Staff 1, with a treble clef and a key signature of one sharp (F#).
- Clarinet (Cl):** Staff 2, with a treble clef and a key signature of one sharp (F#).
- Violin I (Vn I):** Staff 3, with a treble clef and a key signature of one sharp (F#).
- Violin II (Vn II):** Staff 4, with a treble clef and a key signature of one sharp (F#).
- Viola (Va):** Staff 5, with a treble clef and a key signature of one sharp (F#).
- Cello (Vcl):** Staff 6, with a bass clef and a key signature of one sharp (F#).
- Double Bass (Cb):** Staff 7, with a bass clef and a key signature of one sharp (F#).
- Trumpet (Trp):** Staff 8, with a treble clef and a key signature of one sharp (F#).
- Trumpet II (Trp II):** Staff 9, with a treble clef and a key signature of one sharp (F#).
- Trombone (Tbn):** Staff 10, with a bass clef and a key signature of one sharp (F#).
- Drum (Drum):** Staff 11, with a bass clef and a key signature of one sharp (F#).
- Piano (Piano):** Staff 12, with a grand staff (treble and bass clefs) and a key signature of one sharp (F#).
- Woodwind (Wd):** Staff 13, with a treble clef and a key signature of one sharp (F#).
- Cornet (Corno):** Staff 14, with a treble clef and a key signature of one sharp (F#).
- Violin I (Vn I):** Staff 15, with a treble clef and a key signature of one sharp (F#).
- Violin II (Vn II):** Staff 16, with a treble clef and a key signature of one sharp (F#).
- Viola (Va):** Staff 17, with a treble clef and a key signature of one sharp (F#).
- Cello (Vcl):** Staff 18, with a bass clef and a key signature of one sharp (F#).
- Double Bass (Cb):** Staff 19, with a bass clef and a key signature of one sharp (F#).

The score contains various musical notations, including notes, rests, and dynamic markings. A specific marking "Solo" is visible above the Cello staff in the later measures.

pp

Fl. 1
Ob. 1
Cl. 1
Fg. 1

pp

V. 1
V. 2
Viola
Cello
Double Bass

(45)

Tutti

V. 1
V. 2
Viola
Cello
Double Bass
Fl. 1
Ob. 1
Cl. 1
Fg. 1

3 HORIZONTAL MOVEMENT

Oboe 8^{va}

Flute 8^{va}

Piano

Vcl I 8^{va} *ppp*

Vcl II 8^{va}

Celli 8^{va}

Vc 8^{va}

Cb 8^{va}

ppp

Oboe 8^{va}

Flute 8^{va}

Piano

Vcl I 8^{va}

Vcl II 8^{va}

Celli 8^{va}

Vc 8^{va}

Cb 8^{va}

4

4

4

4

3

3

3

mai. fo vng per a la re ve Pau vier fng

116

Handwritten musical score for the first system, measures 1-5. The score includes parts for Flute (Fl.), Piano (Piano), Chorus (Chorus), Violin I (Vcl. I), Violin II (Vcl. II), Viola (Vcl. III), Violoncello (Vcl. IV), and Contrabass (Cb.).

Lyrics for the Chorus part: *Kai vanipote eke - va; Tuu pa'anga pa'e e ka' auve*

Measure numbers 1, 3, 4, 3 are written above the staff.

Handwritten musical score for the second system, measures 6-10. The score includes parts for Flute (Fl.), Piano (Piano), Chorus (Chorus), Violin I (Vcl. I), Violin II (Vcl. II), Viola (Vcl. III), Violoncello (Vcl. IV), and Contrabass (Cb.).

Lyrics for the Chorus part: *Ke va'afu'afu; Kei kupa'anga; E ta'ua pa'anga pa'e e ka' auve*

Measure numbers 6, 7, 8, 9, 10 are written above the staff.

