

6<sup>α</sup>

## ΤΟΝ ΠΑΥΛΟ ΚΑΙ ΤΟΝ ΝΙΚΟΛΑΟ

Handwritten musical score for the first system, measures 6-8. The score is written on three staves. The top staff is a treble clef with a key signature of two sharps (F# and C#) and a 9/8 time signature. The middle staff is a treble clef with a key signature of two sharps and a 9/8 time signature, containing a melodic line with eighth and sixteenth notes. The bottom staff is a bass clef with a key signature of two sharps and a 9/8 time signature, containing a bass line with eighth notes and rests. A circled 'S' is written above the middle staff at the beginning of the first measure. Vertical dashed lines indicate bar lines.

Handwritten musical score for the second system, measures 9-11. The score is written on three staves. The top staff is a treble clef with a key signature of two sharps and a 9/8 time signature. The middle staff is a treble clef with a key signature of two sharps and a 9/8 time signature, containing a melodic line with eighth and sixteenth notes. The bottom staff is a bass clef with a key signature of two sharps and a 9/8 time signature, containing a bass line with eighth notes and rests. Vertical dashed lines indicate bar lines.



Творение святого Николая

Handwritten musical score for the first system. It consists of two staves. The upper staff is for the vocal line, and the lower staff is for the piano accompaniment. The key signature is one sharp (F#) and the time signature is 3/4. The lyrics are written below the vocal line.

Tous - - - - - Tu ve ya - - - - - ra  
 di - - - - - Ma ves Tan - - - - - av

Handwritten musical score for the second system. It continues the two-staff format from the first system. The lyrics are written below the vocal line.

si - - - - - si - - - - - ps - - - - - Ba p na  
 za - - - - - ta - - - - - Pu - - - - - zov zo

Handwritten title or reference text at the top of the page.

Handwritten musical score system 1. It consists of three staves: a vocal line in G-clef with lyrics, a piano accompaniment line in G-clef, and a bass line in F-clef. The lyrics are: "Je - sus ap - pe - re A - - - - -  
Xu - fa va - reus a - - - - -".

Handwritten musical score system 2. It consists of three staves: a vocal line in G-clef with lyrics, a piano accompaniment line in G-clef, and a bass line in F-clef. The lyrics are: "Je - sus a - - - - - Xu - fa - - - - -  
Ma - gi - ste - rum - - - - - Je - su A - - - - -".

- 5 -

Tant q'adno k'at z'at z'at

Handwritten musical notation for the first system. The staff is in G major (one sharp) and 4/4 time. It begins with a treble clef and a common time signature. The melody starts with a quarter note 'za' and a quarter note 'fa'. The second measure contains a circled cross symbol (⊕) above the staff, followed by a quarter note 'Tāp' and a quarter note 'ts va'. The third measure contains a quarter note 'Ta' and a quarter note 'ua', followed by a circled cross symbol (⊕) above the staff. The lyrics 'za fa Tāp ts va Ta ua ts va' are written below the staff.

Handwritten musical notation for the second system. The staff is in G major (one sharp) and 4/4 time. It begins with a treble clef and a common time signature. The melody starts with a quarter note 'za' and a quarter note 'fa'. The second measure contains a circled cross symbol (⊕) above the staff, followed by a quarter note 'Tāp' and a quarter note 'ts va'. The third measure contains a quarter note 'Ta' and a quarter note 'ua', followed by a circled cross symbol (⊕) above the staff. The lyrics 'za fa Tāp ts va Ta ua ts va' are written below the staff.

Handwritten musical notation for the third system. The staff is in G major (one sharp) and 4/4 time. It begins with a treble clef and a common time signature. The melody starts with a quarter note 'za' and a quarter note 'fa'. The second measure contains a circled cross symbol (⊕) above the staff, followed by a quarter note 'Tāp' and a quarter note 'ts va'. The third measure contains a quarter note 'Ta' and a quarter note 'ua', followed by a circled cross symbol (⊕) above the staff. The lyrics 'za fa Tāp ts va Ta ua ts va' are written below the staff.

Handwritten musical notation for the fourth system. The staff is in G major (one sharp) and 4/4 time. It begins with a treble clef and a common time signature. The melody starts with a quarter note 'za' and a quarter note 'fa'. The second measure contains a circled cross symbol (⊕) above the staff, followed by a quarter note 'Tāp' and a quarter note 'ts va'. The third measure contains a quarter note 'Ta' and a quarter note 'ua', followed by a circled cross symbol (⊕) above the staff. The lyrics 'za fa Tāp ts va Ta ua ts va' are written below the staff.

Table 11-11-10 11-11-10 11-11-10

Handwritten musical score for the first system. The vocal line is in G major and 4/4 time. The lyrics are: "Ka zai ji - - - - - da" and "ai' w' xu - - - - - fa". The piano accompaniment consists of chords in the right hand and block chords in the left hand.

Handwritten musical score for the second system. The vocal line is in G major and 4/4 time. The lyrics are: "Kai zo zo ji di da' - - - - - va zos" and "Mo vo du yi fa xza - - - - - f' omi". The piano accompaniment consists of chords in the right hand and block chords in the left hand.

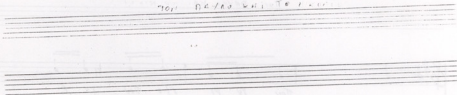
7

Tori Dafa Ka: wu Niwa

Handwritten musical score for the first system. The top staff is a vocal line in G major (one sharp) and 4/4 time. The lyrics are: "Tov ju fi rfo Taw ju fi ra' ailiu va se ya ailiu va". The bottom two staves are a piano accompaniment, with the left hand playing a simple harmonic pattern of chords.

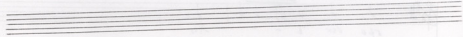
Handwritten musical score for the second system. The top staff continues the vocal line with lyrics: "rfo der 'e - - - - - ras" and "se di pa - - - - - ras". The bottom two staves continue the piano accompaniment with similar chordal patterns.

70. DE/NO WAI TE P...



Musical notation with lyrics: *Ma'i ro ro si ro ta - - ra ...*  
*pe ro aro ma na ro - - pi ...*

Musical notation for the first system, including a treble clef staff and a bass clef staff with chords.



Musical notation with lyrics: *Ma'i ro ro si ro ta - - ra ...*  
*pe ro aro ma na ro - - pi ...*

Musical notation for the second system, including a treble clef staff and a bass clef staff with chords.



