

① (Танецъ восточни (аріана) въ Зрѣніи
Хоръ жінокъ)

② Хоръ (квартетъ) +

③ Квартетъ хоръ

Зорѣна

Handwritten musical notation on a single staff, including a treble clef and notes.

Handwritten musical notation on a single staff, including a treble clef and notes.

Handwritten musical notation on a single staff, including a treble clef and notes.

Handwritten musical notation on a single staff, including a treble clef and notes.

Handwritten musical notation on a single staff, including a treble clef and notes.

① (Toujours merveilleux) (Ensemble) et soliste

Kariv Yisroel

② Kariv (A. P. 1. 1) +

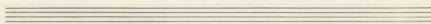
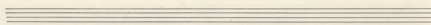
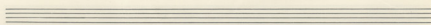
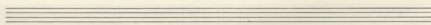
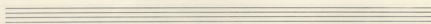
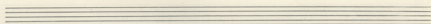
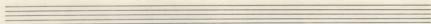
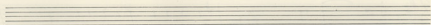
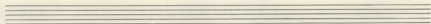
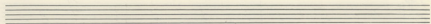
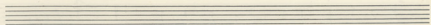
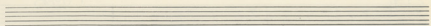
③ Kariv Kariv

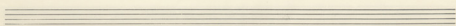
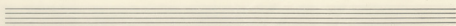
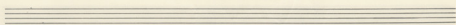
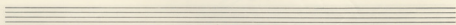
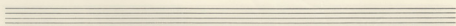
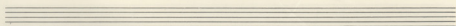
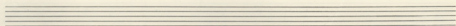
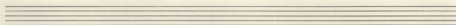
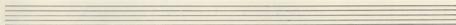
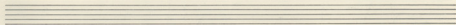
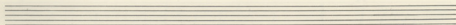
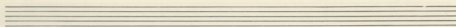
Solomon

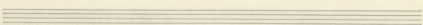
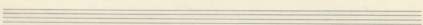
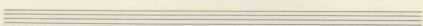
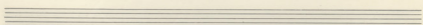
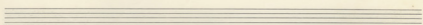
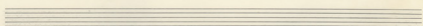
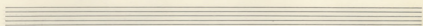
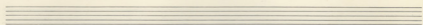
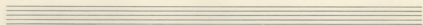
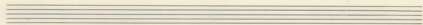
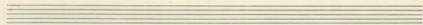
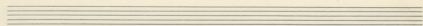
Handwritten musical score for guitar, consisting of seven staves. The notation includes treble clefs, a key signature of one sharp (F#), and a 4/4 time signature. The notes are accompanied by the following labels:

- Staff 1: RE
- Staff 2: 5. SO
- Staff 3: RE
- Staff 4: RE Solo DO#
- Staff 5: la- Solo DO# -
- Staff 6: la- solo
- Staff 7: la- solo

ZORBA

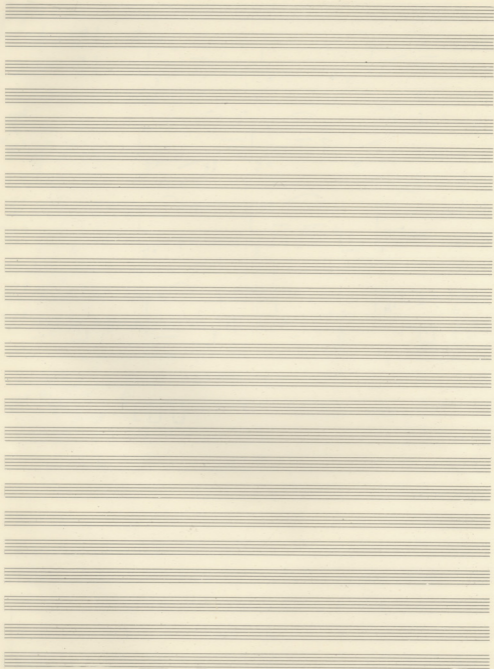


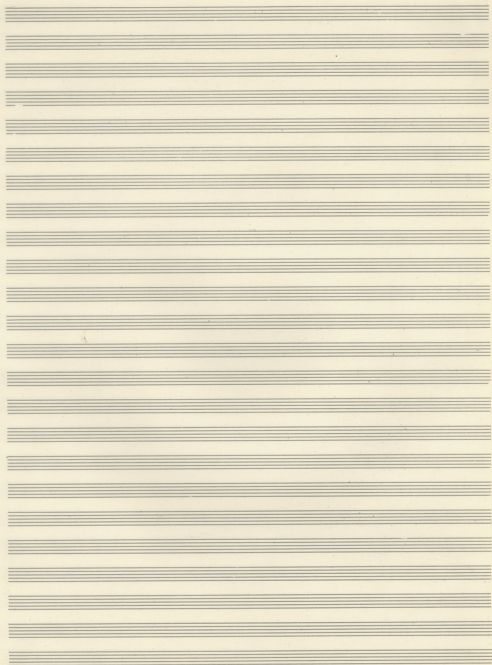




ΣΟΡΜΙΔΑ
(Μανούφ Περνιό)

Handwritten musical score for Soraida. The score is written on ten systems of staves. The first system includes a vocal line (Soprano) and a piano accompaniment. The second system continues the piano accompaniment. The third system shows the vocal line and piano accompaniment. The fourth system continues the piano accompaniment. The fifth system shows the vocal line and piano accompaniment. The sixth system continues the piano accompaniment. The seventh system shows the vocal line and piano accompaniment. The eighth system continues the piano accompaniment. The ninth system shows the vocal line and piano accompaniment. The tenth system continues the piano accompaniment. The score is written in a handwritten style with various musical notations including notes, rests, and dynamic markings.





OPERA

Handwritten musical notation for the first system, consisting of four staves. The top staff has a treble clef and a key signature of one sharp (F#). The second and third staves have alto clefs, and the fourth staff has a bass clef. The notation includes various note values, rests, and bar lines.

Handwritten musical notation for the second system, consisting of a single staff with a bass clef. It contains several measures of music with notes and rests.

XABA

Pedal

Handwritten musical notation for the first system of the 'XABA' section, consisting of a single staff with a bass clef. It includes notes, rests, and a double bar line.

Tutti

Handwritten musical notation for the second system of the 'XABA' section, consisting of a single staff with a bass clef. It includes notes, rests, and a double bar line.

Handwritten musical notation for the third system of the 'XABA' section, consisting of a single staff with a bass clef. A portion of the notation is circled in red.

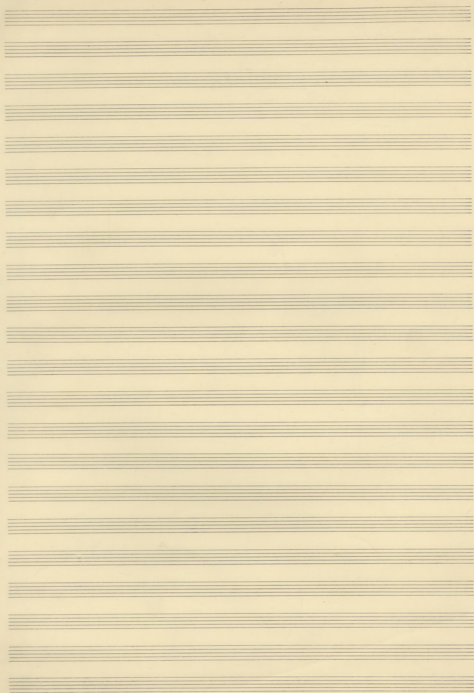
Handwritten musical notation for the fourth system of the 'XABA' section, consisting of a single staff with a bass clef. It includes notes, rests, and a double bar line.

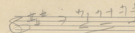
Handwritten musical notation for the fifth system of the 'XABA' section, consisting of a single staff with a bass clef. It includes notes, rests, and a double bar line.

B #2 1 1 1 1 1 1 1 1 2 1 1 1 1 4 9 1

B #2 1 1 1 1 2 1 1 1 1 4 9

B KARAGAN *B* 1 1 1 1 1 2 1 1 1 1

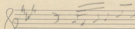


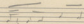
R 

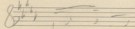
Vol II

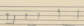


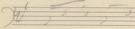
~~Con. 2m~~ ~~4/4~~
Con. 2m

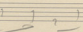
19 

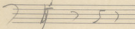
Alto 

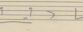
20 

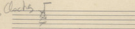
Vc 

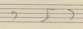
21 

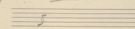
Cl 

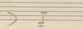
22 

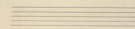
3 Flg 

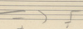
23 

3 Tr 

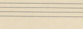
24 

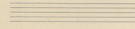
3 Tr 

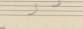
25 

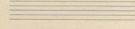
3 Tr 

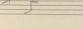
26 

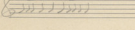
3 Tr 


27 

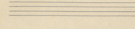
3 Tr 

28 

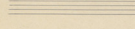
3 Tr 

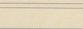
29 


3 Tr 

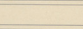
30 

3 Tr 


31 

3 Tr 

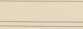
32 


3 Tr 

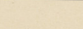
33 

3 Tr 

34 

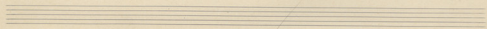
3 Tr 

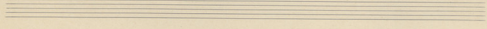
35 

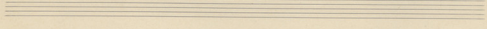
3 Tr 

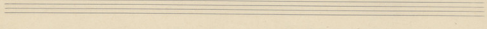
Vol I

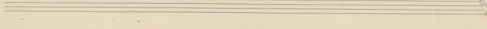


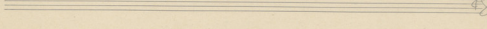












9

8

Viol II
 ALB
 VC
 CB
 4 Corn
 1-2-3-4
 Trump
 2 Corn
 5-6
 7-8
 Trombones
 1-2-3-4
 Fl
 B♭
 Cl
 F
 Piano
 Con

K $\frac{7}{4}$ = 2 $\frac{2}{4}$

Al $\frac{7}{4}$ = 5 $\frac{2}{4}$

Fg $\frac{4}{4}$ = 7 $\frac{2}{4}$

Cl $\frac{7}{4}$

Clm $\frac{8}{4}$

CB₃ 7

Tab S.6
Appropiate
for composition
the following
part

Tab II

6tr

Con

Tim

C

TRM

TR

(25)

Viol II

DC

Handwritten musical notation for Viol II

Handwritten musical notation for DC

Handwritten musical score for piano and guitar. The score is written on two systems of staves. The first system consists of a grand staff (piano) and a guitar staff. The piano part is in treble clef, and the guitar part is in bass clef. The second system also consists of a grand staff and a guitar staff. The piano part is in treble clef, and the guitar part is in bass clef. The music is written in a style that suggests a folk or traditional piece. The title 'ZORBAS' is written in red ink on the right side of the page, enclosed in a red oval.

ZORBAS

Handwritten musical score for a symphony orchestra, consisting of 14 staves. The score is divided into two systems, labeled '14' and '15' at the top. The first system (staves 1-6) includes:

- Staff 1: Violins I (Violini I)
- Staff 2: Violins II (Violini II)
- Staff 3: Violas
- Staff 4: Cellos (Violoni)
- Staff 5: Double Basses (Violoni)
- Staff 6: Percussion (Percussion)

The second system (staves 7-14) includes:

- Staff 7: Flutes (Flauti)
- Staff 8: Oboes (Oboi)
- Staff 9: Clarinets (Clarinetti)
- Staff 10: Bassoons (Fagotti)
- Staff 11: Horns (Corni)
- Staff 12: Trumpets (Trombe)
- Staff 13: Trombones (Tromboni)
- Staff 14: Tuba (Tuba)

The score features various musical notations, including notes, rests, and dynamic markings. A large bracket on the left side groups the woodwind and brass instruments. The percussion part includes a snare drum (Ritm.) and a cymbal (Cim.). The score is written in a clear, legible hand.

A

Flute
 Flute
 Clarinet
 Bass

2 Trumpet
 Trombone
 Trombone
 Trombone

Violin I
 Violin II
 Viola
 Cello
 Double Bass

Trumpet
 Trombone
 Trombone
 Trombone

Trumpet
 Trombone
 Trombone
 Trombone

Trumpet
 Trombone
 Trombone
 Trombone

Violin I
 Violin II
 Viola
 Cello
 Double Bass

Violin I
 Violin II
 Viola
 Cello
 Double Bass

Handwritten musical notation on a single staff, featuring various rhythmic values and accidentals.

Handwritten musical notation on a single staff, continuing the piece with rhythmic patterns.

Handwritten musical notation on a single staff, including dynamic markings such as *pp* and *mf*.

Handwritten musical notation for the **Com** (Corn) part, showing various notes and accidentals.

Handwritten musical notation for the **Trom** (Trumpet) part, including notes and dynamic markings like *dim*.

Handwritten musical notation on a single staff, possibly representing a bass line or another instrument.

Handwritten musical notation on a single staff, featuring rhythmic patterns and accidentals.

Handwritten musical notation on a single staff, continuing the piece with rhythmic patterns.

Handwritten musical score for a symphony. The score is written on multiple staves with various instruments and parts. The notation includes notes, rests, and dynamic markings. The instruments listed include:

- Flute (Fl)
- Oboe (Ob)
- Clarinet (Cl)
- Bassoon (Fg)
- Trumpet (Tr)
- Trombone (Tb)
- Drum (Dr)
- Cymbal (Cym)
- Violin I (Vln I)
- Violin II (Vln II)
- Viola (Vla)
- Cello (Vcl)
- Double Bass (Cb)

The score is divided into two main sections by a vertical line. The first section contains the initial musical notation, and the second section contains further notation, including some dynamic markings like *tr* and *tr*.

Flute } Accented
 Flute } Trp
 Flute } Trp

Handwritten musical score for a string quartet. The score is written on four staves, each representing a different string instrument. The notation includes notes, rests, and dynamic markings. The instruments listed are:

- Violin I (Vln I)
- Violin II (Vln II)
- Viola (Vla)
- Cello (Vcl)

The score is divided into two main sections by a vertical line. The first section contains the initial musical notation, and the second section contains further notation, including some dynamic markings like *tr* and *tr*.

Handwritten musical score for three staves. The top staff begins with a treble clef and a key signature of one sharp (F#). The notation includes various rhythmic values and slurs. The second and third staves continue the musical notation with similar rhythmic patterns and slurs.

Handwritten musical score for a single staff, labeled "Viol. II". The notation includes a treble clef, a key signature of one sharp, and a time signature of 3/4. The score consists of several measures with rhythmic notation and slurs.

Handwritten musical score for two staves. The top staff is labeled "VC" and "Fry" and contains rhythmic notation. The bottom staff is labeled "RB" and contains a treble clef, a key signature of one sharp, and a time signature of 3/4. The notation includes slurs and other musical symbols.

Handwritten musical score on a single page, numbered 19 in the top right corner. The score is written in ink on aged paper and consists of approximately 15 staves. The notation includes various musical symbols such as clefs, time signatures, notes, rests, and dynamic markings. The staves are labeled with instrument abbreviations: D (Drum), B (Bass), C (Cello), a (Alto), Fg (Flute), Cfg (Clarinet), Corn (Cornet), Trp (Trumpet), 1-4 (Saxophones), Trg (Trombone), and Tromp (Trombone). The score is densely written with musical notation, including stems, beams, and various ornaments. There are several annotations and markings throughout, such as 'pin', 'I', 'II', 'V^{imm}', 'S^{im}', 'Telo', 'f', 'ff', 'p', 'pp', 'M', 'M^u', 'R^e', 'Sⁱ', 'A^{no}', 'R^e', 'Sⁱ', 'Vos', 'f^u', 'Telo', 'f', 'ff', 'p', 'pp', 'M', 'M^u', 'R^e', 'Sⁱ', 'A^{no}', 'R^e', 'Sⁱ'. The notation is somewhat dense and appears to be a complex piece of music, possibly a symphony or a large-scale orchestral work. The handwriting is clear but shows signs of being a working draft or a composer's sketch.

Handwritten musical score for strings and woodwinds. The score is organized into systems with various instrument abbreviations and dynamic markings.

Violins I (Vln I): $\frac{3}{8}$ f

Violins II (Vln II): $\frac{3}{8}$ f

Viola (Vla): $\frac{3}{8}$ f

Cello (Vcl): $\frac{3}{8}$ f

Double Bass (Vclb): $\frac{3}{8}$ f

Woodwinds: Flute (Fl), Oboe (Ob), Clarinet (Cl), Bassoon (Fg), Trumpet (Tr), Trombone (Tb), Percussion (P), Saxophone (Sax), Piccolo (Pic), Maracas (Mar), Xylophone (Xy), Cymbals (Cym).

Tempo/Performance: f (forte), fz (forzando), fz (forzando), fz (forzando).

Handwritten musical notation for a section of the score, including a circled "REP" (Repeat) marking and various dynamic markings.

Violins I (Vln I): $\frac{3}{8}$ f

Violins II (Vln II): $\frac{3}{8}$ f

Viola (Vla): $\frac{3}{8}$ f

Cello (Vcl): $\frac{3}{8}$ f

Double Bass (Vclb): $\frac{3}{8}$ f

Woodwinds: Flute (Fl), Oboe (Ob), Clarinet (Cl), Bassoon (Fg), Trumpet (Tr), Trombone (Tb), Percussion (P), Saxophone (Sax), Piccolo (Pic), Maracas (Mar), Xylophone (Xy), Cymbals (Cym).

Tempo/Performance: f (forte), fz (forzando), fz (forzando), fz (forzando).

Handwritten musical notation for a section of the score, including a circled "REP" (Repeat) marking and various dynamic markings.

Violins I (Vln I): $\frac{3}{8}$ f

Violins II (Vln II): $\frac{3}{8}$ f

Viola (Vla): $\frac{3}{8}$ f

Cello (Vcl): $\frac{3}{8}$ f

Double Bass (Vclb): $\frac{3}{8}$ f

Woodwinds: Flute (Fl), Oboe (Ob), Clarinet (Cl), Bassoon (Fg), Trumpet (Tr), Trombone (Tb), Percussion (P), Saxophone (Sax), Piccolo (Pic), Maracas (Mar), Xylophone (Xy), Cymbals (Cym).

Tempo/Performance: f (forte), fz (forzando), fz (forzando), fz (forzando).

SRE — LA ~~LA~~ LA

ZORBA

Handwritten musical notation for the first system, featuring a grand staff with treble and bass clefs. The melody is written in the treble clef with notes and rests. The bass clef contains a simple accompaniment of quarter notes. The lyrics 'SRE' and 'LA' are written above the staff.

Handwritten musical notation for the second system. The melody continues with notes and rests. The lyrics 'LA', 'RO', 'LA', 'RO', 'LA', 'RO', 'LA', 'RO' are written above the staff. The bass clef accompaniment continues with quarter notes.

Handwritten musical notation for the third system. The melody includes notes and rests. The lyrics 'SO', 'LA', 'LA', 'SO', 'SO', 'MI' are written above the staff. The bass clef accompaniment continues with quarter notes.

Handwritten musical notation for the fourth system. The melody includes notes and rests. The lyrics 'RO', 'RO', 'SO', 'LA', 'SO', 'MI', 'SO' are written above the staff. The bass clef accompaniment continues with quarter notes.

Handwritten musical notation for the fifth system, including a tenor (T) and bass (B) part on the left. The melody continues with notes and rests. The lyrics 'RO', 'SO', 'LA', 'SO', 'MI', 'SO' are written above the staff. The bass clef accompaniment continues with quarter notes.

Handwritten musical notation for the sixth system. The melody includes notes and rests. The lyrics 'RO' are written above the staff. The bass clef accompaniment continues with quarter notes. The system ends with a double bar line and some scribbles.

Handwritten musical notation on a grand staff. The top staff is in G major (one sharp) and the bottom staff is in C major. The music consists of a single melodic line in the upper voice and a simple accompaniment in the lower voice. The key signature changes from G major to E minor (three flats) in the second measure.

Handwritten musical notation on a grand staff. The top staff is in G major. The bottom staff contains chords and some rhythmic notation. Above the staff, the words "AUF FA" and "FA SIB DO" are written. The music features a melodic line in the upper voice and chordal accompaniment in the lower voice.

Handwritten musical notation on a grand staff. The top staff is in G major. The bottom staff contains chords and some rhythmic notation. Above the staff, the words "FA", "FA SIB DO", "FA", "LA", and "LA FA LA" are written. The music features a melodic line in the upper voice and chordal accompaniment in the lower voice.

Handwritten musical notation on a grand staff. The top staff is in G major. The bottom staff contains chords and some rhythmic notation. Above the staff, the words "FA", "LA", "LA", "DO SIB DO", and "DO SIB DO" are written. The music features a melodic line in the upper voice and chordal accompaniment in the lower voice.

Handwritten musical notation on a grand staff. The top staff is in G major. The bottom staff contains chords and some rhythmic notation. Above the staff, the words "FA", "LA", "LA", "FA SIB DO", and "FA" are written. The music features a melodic line in the upper voice and chordal accompaniment in the lower voice.

Pa Sn De Pa sen La ze La

ze

La ze La ze

Handwritten musical score for the first system, including staves for Flute (Fl), Oboe (Ob), Clarinet (Clm), Violin I (Vc I), Violin II (Vc II), Viola (Vc), Cello (Cb), and Double Bass (Cb). The score is divided into two measures by a vertical bar line. The first measure contains complex rhythmic patterns and dynamics markings such as mf and mfz . The second measure contains simpler rhythmic patterns. A large 'X' is drawn over the Clarinet and Violin I staves in the first measure. The Cello and Double Bass parts include the notation LB and $Cfog$.

Handwritten musical score for the second system, consisting of five staves. The notation includes complex rhythmic patterns, dynamic markings, and articulation marks. A large 'X' is drawn across the entire system, indicating that this section of the score is to be omitted or is a correction. The notation is dense and includes various note values and rests.

Handwritten musical score on aged paper, featuring multiple staves with musical notation and performance instructions. The score is divided into two systems by a vertical line.

System 1 (Left):

- Violins (Vlns):** Two staves, both in G major (one sharp). The notation includes rhythmic patterns and dynamic markings.
- Violas (Vla):** One staff in G major.
- Violons (Vcl):** One staff in G major.
- Obes (Obs):** One staff in G major.
- Com (Corns):** Two staves, both in G major. The top staff has a dynamic marking of f .
- Flutes (Fl):** Two staves, both in G major. The top staff has a dynamic marking of f .
- Trumpets (Tr):** Two staves, both in G major. The top staff has a dynamic marking of f .
- Timpani (Tim):** One staff in G major.
- Drum (Drum):** One staff in G major.
- Time II:** A section marked with a double bar line and the Roman numeral II.
- Glac:** A section marked with a double bar line and the word "Glac".

System 2 (Right):

- Violins (Vlns):** Two staves, both in G major. The notation includes rhythmic patterns and dynamic markings.
- Violas (Vla):** One staff in G major.
- Violons (Vcl):** One staff in G major.
- Obes (Obs):** One staff in G major.
- Com (Corns):** Two staves, both in G major. The top staff has a dynamic marking of f .
- Flutes (Fl):** Two staves, both in G major. The top staff has a dynamic marking of f .
- Trumpets (Tr):** Two staves, both in G major. The top staff has a dynamic marking of f .
- Timpani (Tim):** One staff in G major.
- Drum (Drum):** One staff in G major.
- Time II:** A section marked with a double bar line and the Roman numeral II.
- Glac:** A section marked with a double bar line and the word "Glac".

The score includes various musical notations such as notes, rests, beams, and dynamic markings (e.g., f , mf). The paper shows signs of age, including yellowing and some foxing.

Handwritten musical notation for the first system, featuring a treble clef, a key signature of one sharp (F#), and a 2/4 time signature. The notation includes a complex melodic line in the upper voice and a bass line with a 9-measure rest in the first measure. The piece concludes with a fermata over the final notes.

Handwritten musical notation for the second system, continuing the piece with similar melodic and bass line structures. It includes a fermata over the final notes of the system.

Handwritten musical notation for the third system, which includes dynamic markings such as *rit.* and *rit.* above the staff. The notation shows a continuation of the melodic and bass lines.

ZORB

Handwritten musical notation for the fourth system, showing the beginning of a new section with a treble clef and a 2/4 time signature.

