

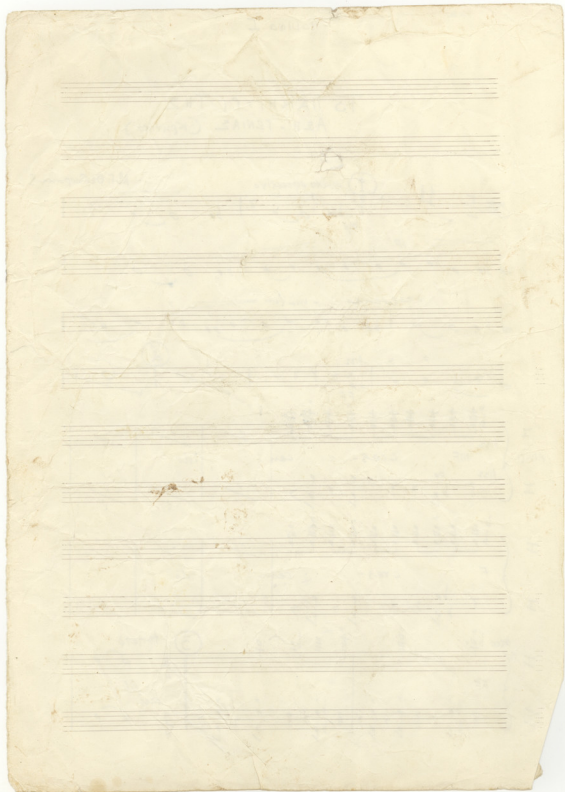
ΤΟ ΠΑΝΗΓΥΡΙ ΤΗΣ
ΑΣΗ. ΓΕΝΙΑΣ (ΚΡΗΤΙΚΟ)

Μ.Γ. ΘΕΟΔΩΡΑΚΗΣ

1 *molto espressivo*
mp
f
crescendo - molto
ff
 2 6

divisi
 I *pizz* *MF* *cres.* *cen.* *do*
 II *pizz*
 I *F* *cres.* *cen.* *do*
 II *arco* *bf* *ff* *3/4* *ritrato* *p* *arco* *pp*

3



Handwritten musical score on aged paper, featuring multiple staves with complex notation, including triplets, sixteenth notes, and dynamic markings.

Staff 1: *unis*, *mp*, *mf*, *Allo Molto*, *F*

Staff 2: *FF*, *FFF*, *noxi traggol*, *pp*

Staff 3: *tra*, *div. a 2*, *mp*, *pp*

Staff 4: *unis*, *mf*, *mp*

Staff 5: *div. a 2*, *mp*, *pp*, *unis*, *mf*

Staff 6: *pp*, *a zacc mltro*, *pizz.*, *FF*, *piu mos. - pesante*

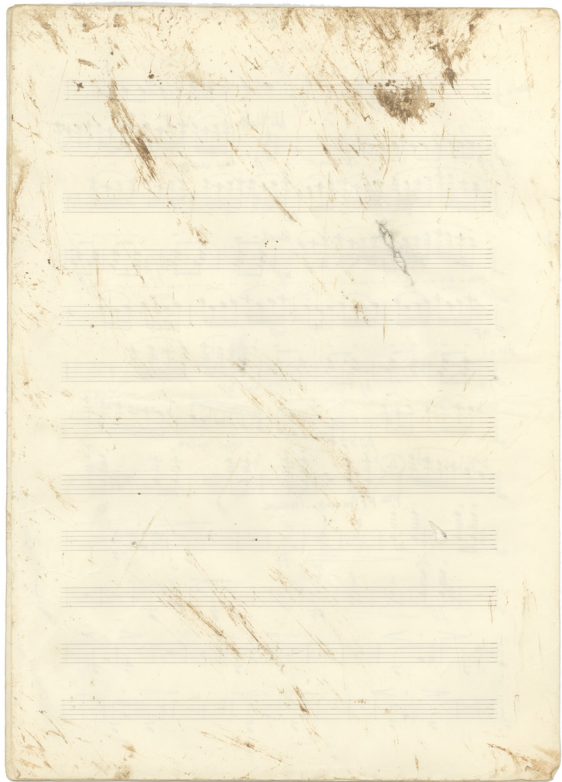
Staff 7: *pp*, *FF*, *pp*

Staff 8: (Empty staff)

Staff 9: (Empty staff)

Staff 10: (Empty staff)

The score includes various musical notations such as triplets (3), sixteenth notes, and dynamic markings like *pp*, *mp*, *mf*, *FF*, and *FFF*. It also features performance instructions like *Allo Molto*, *noxi traggol*, *piu mos. - pesante*, and *a zacc mltro*. The paper shows signs of age with some staining and foxing.



Musical staff with chords and dynamics. Includes markings for $\frac{7}{4}$, $\frac{2}{4}$, and $\frac{4}{4}$ time signatures. Dynamics include ff .

Musical staff with *Tempo pizz.* and *FF* markings. Time signature is $\frac{5}{4}$.

Musical staff with *div. a 3. arco* marking. Time signature is $\frac{7}{4}$.

Musical staff with *unis*, *Piu All.*, and *FF* markings. Time signature is $\frac{3}{4}$.

Musical staff with chords and dynamics. Time signature is $\frac{3}{4}$.

Musical staff with *Tempo* and *div. a 4* markings. Time signature is $\frac{5}{4}$.

Musical staff with *I* and *II* staves, *arco*, and *FFF* markings. Time signature is $\frac{4}{4}$.

Musical staff with *unis* and *FFF* markings. Time signature is $\frac{4}{4}$.

Musical staff with eighth notes. Time signature is $\frac{4}{4}$.

Musical staff with chords. Time signature is $\frac{4}{4}$.

Musical staff with *Sordines* marking. Time signature is $\frac{4}{4}$.

arco pp MF pp MF

pp Pizz. arco p Pizz. arco Pizz. arco Poco Andante Sordine

arco ppp 3 F sostenuto et cantabile

senza sordine 8 Andante cantabile pp

cresc. pp cresc.

pp poco a poco piu mosso

All. Moderato saliendo 1 3 4 5

Elappi. Staccatissimo

Poco piu Andante

FF

Handwritten musical notation for three staves. The first staff begins with a treble clef, a key signature of one sharp (F#), and a 4/4 time signature. It contains notes with dynamic markings *dim.*, *p.*, and *ppp*. The second staff continues with notes and dynamic markings *dim.*, *f.*, and *Poco flllo*. The third staff features a bass clef, notes with dynamic markings *ppz*, *FF*, and *Allegro*, and includes a circled *3/4* time signature.

Handwritten musical notation for two staves, labeled I and II. Both staves begin with a treble clef and a key signature of one sharp (F#). Staff I includes dynamic markings *pp* and *Fpm*. Staff II includes dynamic markings *pp* and *Fpm*. The notation includes notes with slurs and accents.

Handwritten musical notation for a single staff labeled *unis*. It begins with a treble clef and a key signature of one sharp (F#). The notation includes notes with dynamic markings *p* and *salvato*.

Handwritten musical notation for a single staff. It begins with a treble clef and a key signature of one sharp (F#). The notation includes notes with dynamic markings *F* and *salvato*.

Handwritten musical notation for a single staff. It begins with a treble clef and a key signature of one sharp (F#). The notation includes notes with dynamic markings *p* and *salvato*.

Handwritten musical notation for a single staff. It begins with a treble clef and a key signature of one sharp (F#). The notation includes notes with dynamic markings *MF* and *staccatissimo*.

Handwritten musical notation for a single staff. It begins with a treble clef and a key signature of one sharp (F#). The notation includes notes with dynamic markings *p*.

Handwritten musical notation for a single staff. It begins with a treble clef and a key signature of one sharp (F#). The notation includes a large number *4* written below the staff, indicating a measure rest.

10 Più mosso

mf saltado

mf

mf

mf

FF

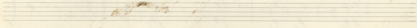
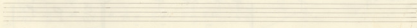
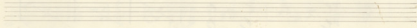
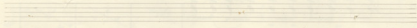
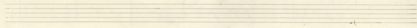
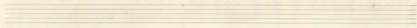
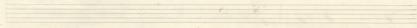
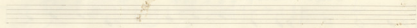
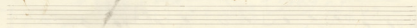
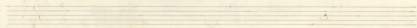
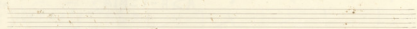
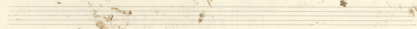
Più mosso Agitato arco

arco 8va MF FFF pizz

8va MF FFF

FFF Tenor

Empty musical staves



Violino I

To ΠΑΝΗΓΥΡΙ ΤΗΣ
ΑΣΗ-ΓΟΜΙΑΣ

All. quasi allegro **II** ① *molto espresso* Mix. T. Deo Spanoul

mp

cresc. molto

FF

②

I *divisi* *pizz.* *mf* *cresc.* *con* *do*

II *pizz.*

I *F* *cresc.* *con* *do*

II

I *arco* *bf.* *ff* *pp* *arco* *pp*

II

③ *Andante*

Allegro Moderato

saltato

Handwritten musical notation on a five-line staff. It begins with a treble clef, a key signature of one sharp (F#), and a 4/4 time signature. The music consists of a series of eighth and sixteenth notes, some beamed together. Above the staff, there are markings for dynamics: *ppp* and *p*. There are also numerical markings 2, 3, 4, and 5 above the notes, and 6, 7, 8, 9, 10, and 11 below the staff. The piece concludes with a double bar line and a 3/2 time signature.

Poco più Andante

Handwritten musical notation on a five-line staff. It starts with a treble clef, a key signature of one sharp (F#), and a 3/4 time signature. The music features a mix of eighth and sixteenth notes. Dynamics include *p*, *cras*, and *FF*. There are also markings for *dim* and *ppp*.

Handwritten musical notation on a five-line staff. It begins with a treble clef, a key signature of one sharp (F#), and a 3/8 time signature. The music is characterized by sixteenth-note patterns. Dynamics include *MF*, *dim*, *pp*, and *Poco All^o FF*.

Handwritten musical notation on a five-line staff. It starts with a treble clef, a key signature of one sharp (F#), and a 4/4 time signature. The music consists of eighth and sixteenth notes. Dynamics include *mf* and *ff*.

610 g. 1860

Handwritten musical notation on a five-line staff. It begins with a treble clef, a key signature of one sharp (F#), and a 4/4 time signature. The music features a series of quarter notes. Dynamics include *F* and *molto*. There is a circled number 9 above the staff.

Μαγαλειότες να ναίητε
αὐτοῦ να 3 τελευτήσῃς ἡμέρας

Handwritten musical notation on a five-line staff. It starts with a treble clef, a key signature of one sharp (F#), and a 4/4 time signature. The music consists of eighth and sixteenth notes. Dynamics include *pp* and *ppm*.

Handwritten musical notation on a five-line staff. It begins with a treble clef, a key signature of one sharp (F#), and a 4/4 time signature. The music features a series of eighth notes. Dynamics include *pp* and *piu mosso*. There is a marking for *arco* and *saltato*.

Handwritten musical notation on a five-line staff. It starts with a treble clef, a key signature of one sharp (F#), and a 4/4 time signature. The music consists of eighth and sixteenth notes. Dynamics include *pizz* and *pp*.

Handwritten musical notation on a five-line staff. It begins with a treble clef, a key signature of one sharp (F#), and a 4/4 time signature. The music features a series of eighth notes. Dynamics include *pp*.

Handwritten musical notation on a five-line staff. It consists of a single measure with a 4/4 time signature, indicated by a large '4' above the staff and a long horizontal line below it.

10 Più mosso

arco mf saltato

mf

pp

FF

Agitato

FF

arco

ppizz

arco

ppizz

arco

ppizz

FFF

FFF

FFF

FFF

TENO

FFF

1780

