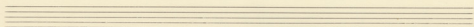
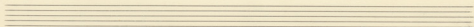
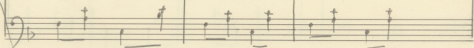
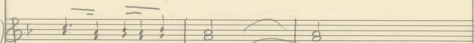
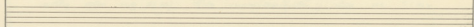
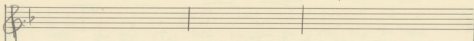
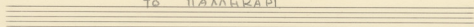


ТО ПАЛЛКАРІ

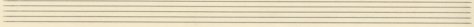
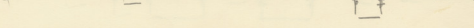
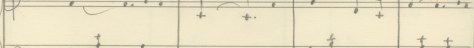
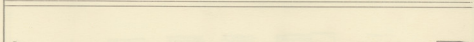
The first system of the handwritten musical score consists of three staves. The top staff is a single-line treble clef staff with a key signature of one flat (Bb) and a time signature of 3/4. It contains a double bar line followed by two empty measures. The middle staff is a treble clef staff with a key signature of one flat (Bb) and a time signature of 3/4, containing three measures of music. The bottom staff is a bass clef staff with a key signature of one flat (Bb) and a time signature of 3/4, containing three measures of music. The music in the middle and bottom staves is written in a simple, rhythmic style with eighth and quarter notes.

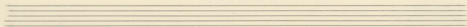
The second system of the handwritten musical score consists of three staves. The top staff is a single-line treble clef staff with a key signature of one flat (Bb) and a time signature of 3/4. It contains a double bar line followed by two empty measures. The middle staff is a treble clef staff with a key signature of one flat (Bb) and a time signature of 3/4, containing three measures of music. The bottom staff is a bass clef staff with a key signature of one flat (Bb) and a time signature of 3/4, containing three measures of music. The music in the middle and bottom staves is written in a simple, rhythmic style with eighth and quarter notes.

ТО ПАЛЫКАРІ



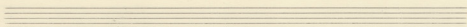
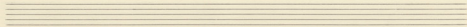
Кхэй		вз	+	за	де	и	епа	кхэй
Кхэй		вз		от	Зра	...	лес	кхэй
Кхэй		вз		и	Нав	...	ззз	Кхэй





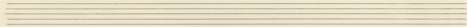
Handwritten musical notation in treble clef with lyrics. The lyrics are: "ve ve ve", "za za za", "zi ku zi", "vi va za", "wa wa wa", "zi zi zi", "ga ga ga", "kai kai kai".

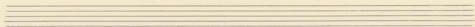
Handwritten musical notation in bass clef, including a double bar line and a key signature change to two flats.



Handwritten musical notation in treble clef, including a key signature change to two flats.

Handwritten musical notation in bass clef, including a key signature change to two flats.

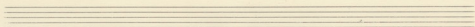
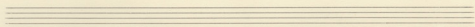




Handwritten musical notation in G major (one sharp) and 4/4 time. The melody is written on a treble clef staff. Below the staff are two lines of lyrics in Greek script.

Πά γη υά πλ σμ θου γηα ού σός εσ τη αση  
 τη αση υά πλ σμ κεν τήα ού σός εσ τη αση  
 τη αση υά πλ θλα τηα ού εσ γι θου υε ούα

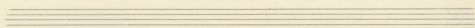
Handwritten musical notation for the accompaniment, consisting of a treble clef staff and a bass clef staff. The bass line includes a double bar line with a slash, indicating a section break.



Handwritten musical notation in G major (one sharp) and 4/4 time. The melody is written on a treble clef staff. Below the staff are two lines of lyrics in Greek script.

υά πλ σμ θου γηα ού σός εσ τη αση  
 υά πλ σμ κεν τήα ού σός εσ τη αση  
 υά πλ θλα τηα ού εσ γι θου υε ούα

Handwritten musical notation for the accompaniment, consisting of a treble clef staff and a bass clef staff. The bass line includes a double bar line with a slash, indicating a section break.



Handwritten musical notation for the first system. The vocal line is in the treble clef with a key signature of one flat (Bb). The lyrics are written below the notes. The piano accompaniment is in the bass clef.

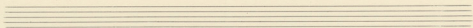
Lyrics:  
ye fi ge - tav - zid a a aju ves zo  
se va ve - kvu - pa kav zo' sa vi zo  
zo' va av - ve - fia To M pa va us

Handwritten musical notation for the second system, showing piano accompaniment for the first system. It consists of two staves: a treble clef staff and a bass clef staff.

Handwritten musical notation for the third system. The vocal line is in the treble clef with a key signature of one flat (Bb). The lyrics are written below the notes. The piano accompaniment is in the bass clef.

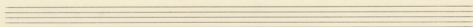
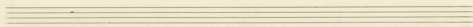
Lyrics:  
xe pi sov Kie ho bes zo ps ya pi us  
o vi pa zo' H jo zo ps ya pi kav  
pi pu se un ba jas lat pu pu emio

Handwritten musical notation for the fourth system, showing piano accompaniment for the third system. It consists of two staves: a treble clef staff and a bass clef staff.



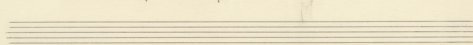
Handwritten musical notation with lyrics in Cyrillic script. The lyrics are: "Съ не въ ба гла гла до ѿ хъ по сѣмъ - нѣхъ - зовъ савъ нѣ а гла доу зовъ нѣ Ба гла въ - нѣа ѿ ѿ гласъ е наръ гла доу не наръ ѿ сѣмъ гла е".

Handwritten musical notation for piano accompaniment, including a treble clef staff and a bass clef staff with a key signature of one flat.

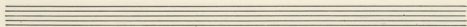
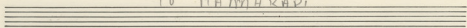


Handwritten musical notation for piano accompaniment, showing two measures. The first measure is marked with a Roman numeral 'I' and contains the word 'via'. The second measure is marked with a Roman numeral 'II' and contains the word 'тѣа'.

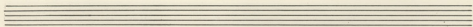
Handwritten musical notation for piano accompaniment, showing two measures. The first measure is marked with a Roman numeral 'I' and contains the numbers '1. 2. 3.'. The second measure is marked with a Roman numeral 'II'.



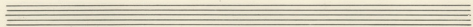
ТО ПАМНІКАРІ



Handwritten musical notation for the first system. It consists of two systems of staves. The upper system has a treble clef and a 2/4 time signature. The lower system has a bass clef and a 2/4 time signature. The music is written in a single system with a vertical bar line. The notation includes quarter notes, eighth notes, and rests.

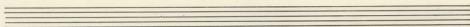
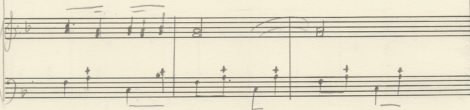
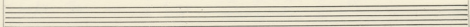
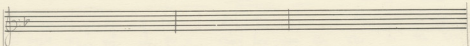
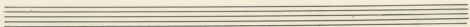
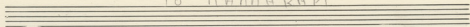


Handwritten musical notation for the second system. It consists of two systems of staves. The upper system has a treble clef and a 2/4 time signature. The lower system has a bass clef and a 2/4 time signature. The music is written in a single system with a vertical bar line. The notation includes quarter notes, eighth notes, and rests.

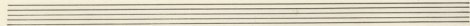


-2-

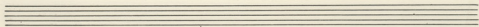
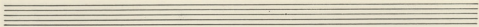
## Το ΠΑΛΗΝΚΑΡΙ



Κίτρι	-----	+	σο	δι	εν	ζου	Κίτρι	-----
Μαύ	-----	ve	οι	επα	-----	ζοι	Κίτρι	-----
Κίτρι	-----	ve	οι	μα	-----	ζοι	Κίτρι	-----

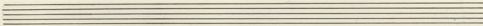






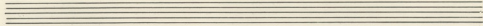
Handwritten musical notation with lyrics in Chinese characters. The lyrics are: 3a su ve pa -- u' i a' pi 201 600 K' lau  
3a su ve pa -- u' i a' pi 201 600 K' lau  
3a su ve pa -- u' i a' pi 201 600 K' lau

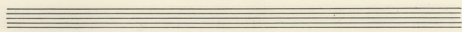
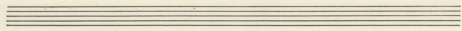
Handwritten musical notation with lyrics in Chinese characters. The lyrics are: 3a su ve pa -- u' i a' pi 201 600 K' lau  
3a su ve pa -- u' i a' pi 201 600 K' lau  
3a su ve pa -- u' i a' pi 201 600 K' lau



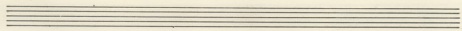
Handwritten musical notation with lyrics in Chinese characters. The lyrics are: 3a su ve pa -- u' i a' pi 201 600 K' lau  
3a su ve pa -- u' i a' pi 201 600 K' lau  
3a su ve pa -- u' i a' pi 201 600 K' lau

Handwritten musical notation with lyrics in Chinese characters. The lyrics are: 3a su ve pa -- u' i a' pi 201 600 K' lau  
3a su ve pa -- u' i a' pi 201 600 K' lau  
3a su ve pa -- u' i a' pi 201 600 K' lau

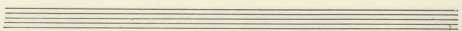


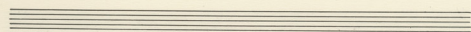
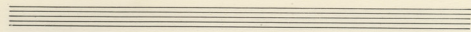


Tia un na pi ca sou xa ca Goi ci Tia Hin  
 Tia un na pi ca xov nia ca Hev ci Tia Hin  
 Tia un na pi Ma xov xov ca xi Xa he ca

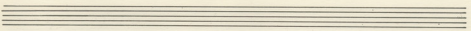


un pi mi xa pel uin pu ca via pa  
 un pi ci wo wi xil k'ov cov Ga ve pa  
 pa pa pa pa pa pa pa pa pa pa pa pa

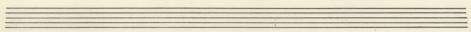


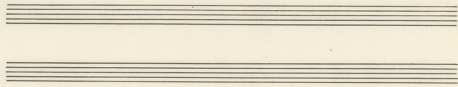


Ἰ.Ε. ἰη. Ἰε - τίου - λια ἡ ἄνω νε ἰ  
 Ἐ.ε. να νε - κρυ - φα ἡ τοῦ ἁ νε καί  
 τῶν να ἐν - νε - φῶν τῶν ἁ ἰη ἡ νε

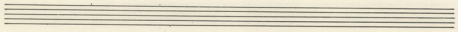


χε πὶ σου κ'ε κο βε ἁ: φε ἡα --- πὶ ἡ  
 ἁ νε πα νε ἡ νε το νε ἡα --- πὶ καυ  
 πὶ ἡ νε νε ἡ νε το νε ἡα --- πὶ νε





G E uo ψι Ga xou tou do o xe pol hia - Nux -  
 zu Ga edv A ya uli zed eni Ba fa ve - tra  
 Ημε Αρι Ε ωρα για σου ut koud ημε εα γε - ε!



I	II
<p>zuq via</p>	<p>tra</p>
I	II
<p>1. 2. 3. :</p>	

