

ΓΑ

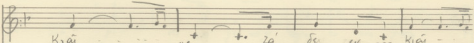
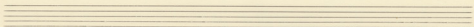
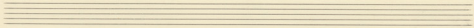
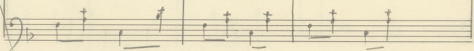
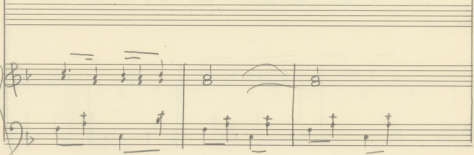
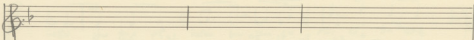
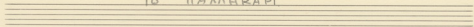
ΤΟ ΠΑΛΛΗΚΑΡΙ

ТО ПАЛЛКАРІ

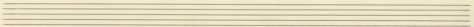
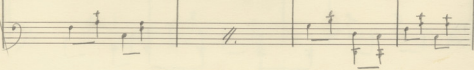
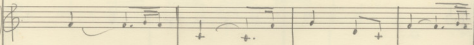
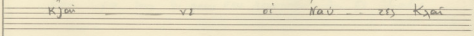
The first system of the handwritten musical score consists of three staves. The top staff is a single-line staff with a treble clef, a key signature of one flat (B-flat), and a 3/4 time signature. It contains a double bar line followed by two empty measures. The middle staff is a treble clef staff with a key signature of one flat and a 3/4 time signature, containing three measures of music. The bottom staff is a bass clef staff with a key signature of one flat and a 3/4 time signature, containing three measures of music. The music in the middle and bottom staves is written in a simple, rhythmic style with eighth and quarter notes.

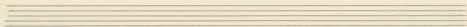
The second system of the handwritten musical score consists of three staves. The top staff is a single-line staff with a treble clef and a key signature of one flat, containing a double bar line followed by two empty measures. The middle staff is a treble clef staff with a key signature of one flat, containing three measures of music. The bottom staff is a bass clef staff with a key signature of one flat, containing three measures of music. The music in the middle and bottom staves continues the rhythmic pattern from the first system.

ТО ПАЛМКАРІ



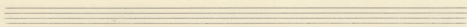
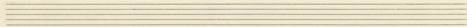
|      |     |    |    |    |     |     |     |     |      |
|------|-----|----|----|----|-----|-----|-----|-----|------|
| Кхәи |     | +  |    | +  | 2а' | 8с  | и   | сҗа | Кхәи |
| Кхәи | ... | вҗ | вҗ | оҗ | Җра | ... | ... | вҗ  | Кхәи |
| Кхәи |     | вҗ |    | и  | Нав | ... | ... | вҗ  | Кхәи |





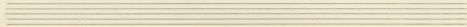
Handwritten musical notation in treble clef with lyrics. The lyrics are: "ve ve ve", "za za za", "zi ku zi", "vi va za", "wa wa wa", "yi yi yi", "zi zi zi", "ka ka ka".

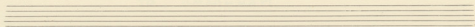
Handwritten musical notation in bass clef, including a double bar line and a key signature change to two flats.



Handwritten musical notation in treble clef, including a key signature change to two flats.

Handwritten musical notation in bass clef, including a key signature change to two flats.

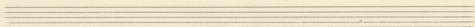
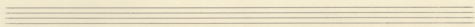




Handwritten musical notation in G major (one sharp) and 4/4 time. The melody is written on a treble clef staff. Below the staff are two lines of lyrics in Greek script.

Πά γη υά πλ σμ δού γηα ού σός εσ τη δού  
 τη δού υά πλ σμ κού τηα ού σός εσ τη δού  
 τη δού υά πλ κη υά ού εσ γι δού υε ού

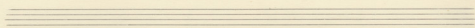
Handwritten musical notation in G major and 4/4 time. The melody is written on a treble clef staff. Below it is a bass clef staff with a few notes and rests.



Handwritten musical notation in G major and 4/4 time. The melody is written on a treble clef staff. Below the staff are two lines of lyrics in Greek script.

υά πλ σμ δού γηα ού σός εσ τη δού  
 υά πλ σμ κού τηα ού σός εσ τη δού  
 κη υά ού εσ γι δού υε ού

Handwritten musical notation in G major and 4/4 time. The melody is written on a treble clef staff. Below it is a bass clef staff with a few notes and rests.



Handwritten musical notation for the first system. The vocal line is in G major (one flat) and 4/4 time. The lyrics are written below the notes. The piano accompaniment is in the same key and time, with a simple harmonic structure.

Lyrics:  
ye fi ge - nau - zia  
se va ve - kvu - pa  
zoi va zuy - ve - fia  
KaV a' asju ves zo'  
Kav zoi sa vi zo'  
Te M pa va us

Handwritten musical notation for the second system, showing the piano accompaniment for the first system. It consists of two staves: a treble clef staff with chords and a bass clef staff with a simple bass line.

Handwritten musical notation for the third system. The vocal line continues with lyrics. The piano accompaniment is in the same key and time.

Lyrics:  
xe pi sov Kie ho bes zo fi  
o vi pa zoi H jo zo fi  
pi pu se un ba jas lat pu  
pa ..... pi  
pa ..... pi Kav  
pa ..... En mio

Handwritten musical notation for the fourth system, showing the piano accompaniment for the third system. It consists of two staves: a treble clef staff with chords and a bass clef staff with a simple bass line.

Handwritten musical score for the first system. The top staff is a vocal line in G major (one sharp) with lyrics in Greek. The bottom staff is a piano accompaniment.

Vocal line lyrics:  
 ος υο υε οα γου γου οα ο Χα' ποσ μου - ΗΥΧ -  
 ζου δαν τιν Α γα' δαν τιν Βα' γα υε - Πρα  
 Η γιος Ε υπαρ φιν ου υε υαι οι Σε γλι - ει

Handwritten musical score for the second system. The top staff is a vocal line and the bottom staff is a piano accompaniment. The piano accompaniment includes a double bar line in the middle of the system.

Handwritten musical score for the third system. It consists of two systems of chords, each with a Roman numeral (I and II) above the staff. The first system has a vocal line with the word "via" and a piano accompaniment. The second system has a piano accompaniment with the numbers 1, 2, 3. above the staff.

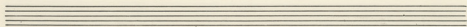
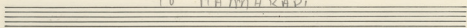
Chord system I:  $\text{C}^{\flat}$  /  $\text{F}^{\flat}$  /  $\text{A}^{\flat}$  /  $\text{D}^{\flat}$   
 Chord system II:  $\text{C}^{\flat}$  /  $\text{F}^{\flat}$  /  $\text{A}^{\flat}$  /  $\text{D}^{\flat}$   
 Chord system III:  $\text{C}^{\flat}$  /  $\text{F}^{\flat}$  /  $\text{A}^{\flat}$  /  $\text{D}^{\flat}$   
 Chord system IV:  $\text{C}^{\flat}$  /  $\text{F}^{\flat}$  /  $\text{A}^{\flat}$  /  $\text{D}^{\flat}$



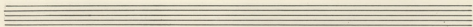


## ΤΟ ΠΑΛΛΗΚΑΡΙ

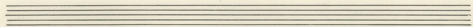
ТО ПАМНІКАРІ



A system of handwritten musical notation. It features a treble clef on the left, a key signature of one flat (B-flat), and a 2/4 time signature. The notation is written on two staves. The upper staff contains a melody with eighth and sixteenth notes, some beamed together. The lower staff contains a bass line with eighth notes and rests. A vertical bar line is present at the beginning of the system.

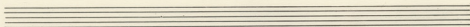
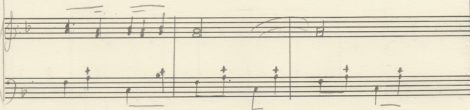
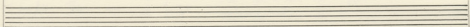
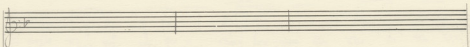
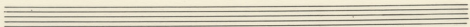
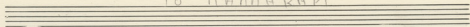


A system of handwritten musical notation, identical in structure to the first system. It features a treble clef, a key signature of one flat, and a 2/4 time signature. The notation is written on two staves. The upper staff contains a melody with eighth and sixteenth notes, some beamed together. The lower staff contains a bass line with eighth notes and rests. A vertical bar line is present at the beginning of the system.

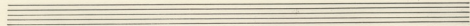


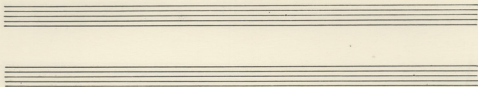
-2-

## Το ΠΑΛΗΝΚΑΡΙ



|      |       |    |    |      |     |     |      |       |
|------|-------|----|----|------|-----|-----|------|-------|
| Κλαί | ----- | +  | ζα | δὲ   | εὐ  | ζῶν | Κλαί | ----- |
| Μῆτρ | ----- | ve | οἱ | ἐγὼ  | --- | ζα  | Κλαί | ----- |
| Κλαί | ----- | ve | οἱ | Μῆτρ | --- | ζα  | Κλαί | ----- |



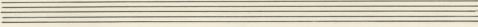


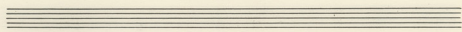
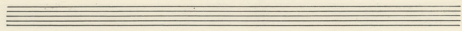
Handwritten musical notation with lyrics in Chinese characters. The lyrics are: ㄗㄞˊ ㄙㄨˋ ㄨㄟˊ ㄆㄞˊ ㄨˋ ㄛˊ ㄛˊ ㄆㄛˊ ㄛㄠˊ ㄅㄛㄠˊ ㄕㄛㄠˊ ㄕㄛㄠˊ ㄕㄛㄠˊ. The lyrics are written in a stylized font with some characters appearing to be in a different script or dialect.

Handwritten musical notation with lyrics in Chinese characters. The lyrics are: ㄗㄞˊ ㄙㄨˋ ㄨㄟˊ ㄆㄞˊ ㄨˋ ㄛˊ ㄛˊ ㄆㄛˊ ㄛㄠˊ ㄅㄛㄠˊ ㄕㄛㄠˊ ㄕㄛㄠˊ ㄕㄛㄠˊ. The lyrics are written in a stylized font with some characters appearing to be in a different script or dialect.

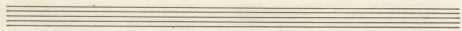
Handwritten musical notation with lyrics in Chinese characters. The lyrics are: ㄗㄞˊ ㄙㄨˋ ㄨㄟˊ ㄆㄞˊ ㄨˋ ㄛˊ ㄛˊ ㄆㄛˊ ㄛㄠˊ ㄅㄛㄠˊ ㄕㄛㄠˊ ㄕㄛㄠˊ ㄕㄛㄠˊ. The lyrics are written in a stylized font with some characters appearing to be in a different script or dialect.

Handwritten musical notation with lyrics in Chinese characters. The lyrics are: ㄗㄞˊ ㄙㄨˋ ㄨㄟˊ ㄆㄞˊ ㄨˋ ㄛˊ ㄛˊ ㄆㄛˊ ㄛㄠˊ ㄅㄛㄠˊ ㄕㄛㄠˊ ㄕㄛㄠˊ ㄕㄛㄠˊ. The lyrics are written in a stylized font with some characters appearing to be in a different script or dialect.

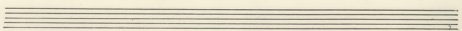


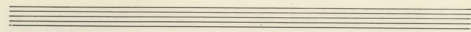


Tia un na pi ca sou xa ca Goi ci Tia Hn  
 Tia un na pi ca xov nia ca Hev ci Tia Hn  
 Tia un na pi Ma xov xov ca xi Xn de ca



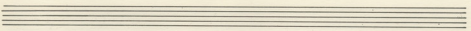
un pi mi xa pel uin pu ca via pu  
 un pi ci wo wi xil k'ov cov ca ve pa  
 pa pa pa pa pa pa pa pa pa pa pa pa





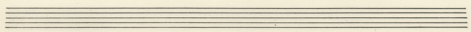
Handwritten musical notation with lyrics in Greek. The lyrics are:   
Γε. μ. γε - τρου - λια  
Ge va ve - kuv - φα  
Zav va zu - ve - φα  
The second line of lyrics is partially obscured by a large handwritten 'A' in the left margin.

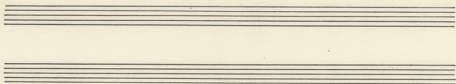
Handwritten musical notation for the first system, including a treble clef, a key signature of one flat, and a common time signature. It features a vocal line and a piano accompaniment line with chords.



Handwritten musical notation with lyrics in Greek. The lyrics are:   
xe pi Gov k'e xo be ca: fe  
a va pa ay H zo ye  
pi mu ke ay Oe zoc cap  
The second line of lyrics is partially obscured by a large handwritten 'A' in the left margin.

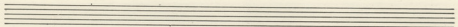
Handwritten musical notation for the second system, including a treble clef, a key signature of one flat, and a common time signature. It features a vocal line and a piano accompaniment line with chords.





Handwritten musical notation with lyrics in Greek and Latin. The lyrics are:   
G E uo ψι Ga xou tou do o xi pol hia - Nux -  
zou Ga εδν Α ya uli zed en' Ba fa ve - tra  
The second line of lyrics is partially obscured by a scribble.

Handwritten musical notation consisting of two staves. The top staff contains a melodic line with notes and rests. The bottom staff contains a bass line with notes and rests. There are some markings like '+' and a double bar line.



Handwritten musical notation with two systems, each labeled I and II. The first system (I) has lyrics 'zuz' and 'via'. The second system (II) has the lyric 'tra'. There is a double bar line between the systems.

Handwritten musical notation with two systems, each labeled I and II. The first system (I) has the lyrics '1. 2. 3.' followed by a colon. The second system (II) is mostly blank with some faint markings. There is a double bar line between the systems.

