

МУРТА

Handwritten musical score for the first system. It features a vocal line on a single staff and a piano accompaniment on two staves. The key signature has one sharp (F#) and the time signature is 9/8. The piano part includes a large 'X' in the first measure and an arrow pointing to the right in the second measure. The notation includes various rhythmic values and accidentals.

Handwritten musical score for the second system. It continues the vocal and piano parts from the first system. The piano accompaniment features dense chordal textures and rhythmic patterns. There are 'X' marks in the piano part of the second and third measures.

Handwritten musical score for the third system. The vocal line continues with a few notes. The piano part shows a transition with a large 'X' at the end of the system, possibly indicating a section change or a specific performance instruction.

Handwritten musical score for the fourth system. It shows the final part of the piece, with the vocal line and piano accompaniment concluding. The piano part includes some final chords and rests.

Handwritten musical notation on a grand staff. The top staff contains a melodic line with some scribbles. The bottom staff contains a bass line with two chords circled. A circled 'A' is written to the left of the staff. The key signature is one sharp (F#) and the time signature is 8/8.

Handwritten musical notation on a grand staff. The top staff contains a melodic line with many beamed notes. The bottom staff contains a bass line with several chords and some 'x' marks. The key signature is one sharp (F#) and the time signature is 8/8.

Handwritten musical notation on a grand staff. The top staff contains a melodic line with many beamed notes. The bottom staff contains a bass line with many beamed notes and some 'x' marks. The key signature is one sharp (F#) and the time signature is 8/8.

Handwritten musical notation on a grand staff. The top staff contains a melodic line with many beamed notes. The bottom staff contains a bass line with many beamed notes and some 'x' marks. A circled 'A' is written to the left of the staff. The key signature is one sharp (F#) and the time signature is 8/8.

Handwritten musical notation on a grand staff. The top staff contains a melodic line with many beamed notes. The bottom staff contains a bass line with many beamed notes and some 'x' marks. The key signature is one sharp (F#) and the time signature is 8/8.

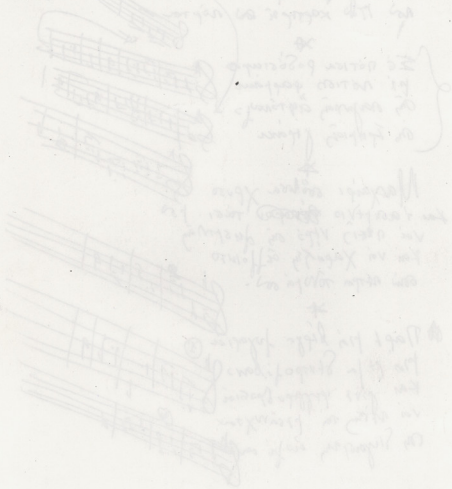
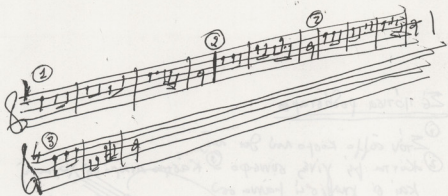
Σέ ποτίσα ροδίσταρο

- ① Στόν αἴθο Κόστο λού θοι λού
- ② Κίττα βί γίνε σωθερο ③ Κιάττα αικερί θι Χαραγίθι
- Και θι μωβίσι θίνου σου
- Αὐί Πάο κάρτη θι θού πόρτα

✱
 Σέ ποτίσα ροδίσταρο
 βί λότηθ φάρμακ
 θις λουγίθις ἀπτόλου
 θις ἑρπύθις γράκ

✱
 Μαχαίρι σούβρα χρυσο
 και ταστήνιο ~~θού~~ τού, τού
 νοι νείθι νηθι θις ἀπτόλου
 και νοι Χαραγίθι αἴθλοιστο
 θου νίτην τούθι σου.

✱
 Πάπτ βίθι βίθι θυγαίθι
 βίθι βίθι θυγαίθι
 και βίθι θυγαίθι
 νοι νίθι θι βίθι θυγαίθι
 θις θυγαίθι αἴθλοιστο



Ffl.
ff
Cl
Fg

Fop
Fes

Pian

Kia
Bar
Xvi.

Trpg

Mno

Viol
Vcl
Cb

~~MITTELH
1960~~

ΕΙΝΑ ΦΟΥΣΦΑ ΜΙΑ ΚΑΡΔΙΑ

8

Flauto Bb 2

Tromba Bb 1

Saxofoni Bb

Clarineto Bb 2

Celli 4

This system contains the first five staves of the score. The Flute (Flauto Bb 2) and Trombone (Tromba Bb 1) parts are written in treble clef with a key signature of two flats and a 2/4 time signature. The Saxophone (Saxofoni Bb) part is in bass clef. The Clarinet (Clarineto Bb 2) and Cello (Celli 4) parts are also in bass clef. The music consists of rhythmic patterns and melodic lines.

This system contains the piano accompaniment for the first five staves. It features a grand staff with treble and bass clefs. The right hand plays a complex melodic line with many beamed notes and slurs. The left hand provides a harmonic accompaniment with chords and single notes.

This system contains the piano accompaniment for the next five staves. It continues the grand staff notation from the previous system. The right hand part shows a change in texture with more sustained notes and a final cadence. The left hand continues with a steady accompaniment.

12 notes 1/8 = 2'

Handwritten musical score for a string quartet, first system. The score is written on five staves. The top two staves are for Violin I and Violin II, and the bottom three are for Viola and Violoncello. The music features complex rhythmic patterns with many sixteenth and thirty-second notes. A double bar line is present at the end of the system.

Handwritten musical score for a string quartet, second system. The notation continues from the first system. A circled number '2' is written above the second staff. The system concludes with a double bar line.

Handwritten musical score for a string quartet, third system. This system contains some of the most dense and intricate rhythmic passages in the score, with overlapping sixteenth and thirty-second notes. A double bar line is at the end of the system.

Handwritten musical score for a string quartet, fourth system. The first two staves are labeled 'Vi' (Violin) and 'Vc' (Violoncello). The system ends with a double bar line and the word 'Finis' written in the right margin.

МАРШАЛІТА НАВЕРНЕ

Handwritten musical notation for the first system. It consists of two staves. The upper staff is in treble clef with a 2/2 time signature. The lower staff is in bass clef. The music is written in a key with one flat (B-flat). The first staff contains six measures of music, with some notes beamed together. The second staff contains six measures, with some measures containing rests or 'x' marks.

Handwritten musical notation for the second system. It consists of two staves. The upper staff is in treble clef. The lower staff is in bass clef. The music continues from the first system. The first staff contains six measures, and the second staff contains six measures.

Handwritten musical notation for the third system. It consists of two staves. The upper staff is in treble clef. The lower staff is in bass clef. The music continues. The first staff contains six measures, and the second staff contains six measures.

Handwritten musical notation for the fourth system. It consists of two staves. The upper staff is in treble clef. The lower staff is in bass clef. The music continues. The first staff contains six measures, and the second staff contains six measures.

Handwritten musical notation for the fifth system. It consists of two staves. The upper staff is in treble clef. The lower staff is in bass clef. The music continues. The first staff contains six measures, and the second staff contains six measures.

Handwritten musical notation for the sixth system. It consists of two staves. The upper staff is in treble clef. The lower staff is in bass clef. The music continues. The first staff contains six measures, and the second staff contains six measures.

Five empty musical staves at the bottom of the page, arranged in two groups of two and one single staff at the bottom.

Vel. *scr. flaut.*
op. 2

Handwritten musical notation for the first system, featuring a treble clef, a key signature of one flat, and a common time signature. The notation includes rhythmic patterns with stems and beams, and dynamic markings 'Vel.' and 'scr. flaut. op. 2'.

Handwritten musical notation for the second system, showing a few notes and a rectangular box on a staff.

A series of approximately 15 empty musical staves, indicating the rest of the page is blank.

Pm *♩* *♩* *♩* *♩* *♩* *♩* *♩* *♩* *♩* *♩*
 K Co *♩* *♩* *♩* *♩* *♩* *♩* *♩* *♩* *♩* *♩*
 P *♩* *♩* *♩* *♩* *♩* *♩* *♩* *♩* *♩* *♩*
 Vcl I *♩* *♩* *♩* *♩* *♩* *♩* *♩* *♩* *♩* *♩*
 Vcl *♩* *♩* *♩* *♩* *♩* *♩* *♩* *♩* *♩* *♩*
 Flauto *♩* *♩* *♩* *♩* *♩* *♩* *♩* *♩* *♩* *♩*

Pm *♩* *♩* *♩* *♩* *♩* *♩* *♩* *♩* *♩* *♩*
 K Co *♩* *♩* *♩* *♩* *♩* *♩* *♩* *♩* *♩* *♩*
 P *♩* *♩* *♩* *♩* *♩* *♩* *♩* *♩* *♩* *♩*
 Vcl I *♩* *♩* *♩* *♩* *♩* *♩* *♩* *♩* *♩* *♩*
 Vcl *♩* *♩* *♩* *♩* *♩* *♩* *♩* *♩* *♩* *♩*
 Flauto *♩* *♩* *♩* *♩* *♩* *♩* *♩* *♩* *♩* *♩*

Pm *♩* *♩* *♩* *♩* *♩* *♩* *♩* *♩* *♩* *♩*
 K Co *♩* *♩* *♩* *♩* *♩* *♩* *♩* *♩* *♩* *♩*
 P *♩* *♩* *♩* *♩* *♩* *♩* *♩* *♩* *♩* *♩*
 Vcl I *♩* *♩* *♩* *♩* *♩* *♩* *♩* *♩* *♩* *♩*
 Vcl *♩* *♩* *♩* *♩* *♩* *♩* *♩* *♩* *♩* *♩*
 Flauto *♩* *♩* *♩* *♩* *♩* *♩* *♩* *♩* *♩* *♩*

Pm *♩* *♩* *♩* *♩* *♩* *♩* *♩* *♩* *♩* *♩*
 K Co *♩* *♩* *♩* *♩* *♩* *♩* *♩* *♩* *♩* *♩*
 P *♩* *♩* *♩* *♩* *♩* *♩* *♩* *♩* *♩* *♩*
 Vcl I *♩* *♩* *♩* *♩* *♩* *♩* *♩* *♩* *♩* *♩*
 Vcl *♩* *♩* *♩* *♩* *♩* *♩* *♩* *♩* *♩* *♩*
 Flauto *♩* *♩* *♩* *♩* *♩* *♩* *♩* *♩* *♩* *♩*

On RE

~~Χαλαρή~~ Ζητήματα

ΒΡΑΧΟ-ΒΡΑΧΟ

Handwritten musical score for the piece 'ΒΡΑΧΟ-ΒΡΑΧΟ'. It consists of five staves. The first staff is the vocal line in 8/8 time, with lyrics: 'ε- να βραχιά ε' πο- τα βραχιά, να ε' οκπα να βραχιά - να ε' οκπα να ε' οκπα να ε' οκπα'. The second staff continues the vocal line with lyrics: 'πο- να ε' οκπα να ε' οκπα να ε' οκπα να ε' οκπα να ε' οκπα να ε' οκπα να ε' οκπα'. The third staff is a piano accompaniment. The fourth and fifth staves are additional piano accompaniment parts.

~~Χαλαρή~~

ΜΕΤΑΜΑΡΤΥΣΗ

Handwritten musical score for the piece 'ΜΕΤΑΜΑΡΤΥΣΗ'. It consists of seven staves. The first staff is the vocal line in 8/8 time, with lyrics: 'τα πα- βί- ομι- λη- τή- ρα ε' οκπα να ε' οκπα να ε' οκπα να ε' οκπα να ε' οκπα να ε' οκπα'. The second staff continues the vocal line with lyrics: 'να ε' οκπα να ε' οκπα να ε' οκπα να ε' οκπα να ε' οκπα να ε' οκπα να ε' οκπα'. The third staff is a piano accompaniment. The fourth, fifth, and sixth staves are additional piano accompaniment parts. The seventh staff is the final piano accompaniment part.

