

Soprano

Τύπα σάββα-σε-ρι υ-πα-κο-υ-ραυ ήα ή-ρι θ-σα-σε-
 ρα ναυ-θου-ραυ
 Τύπα σάββα-σε-ρι υ-πα-κο-υ-ραυ ήα
 υ-ρι θ-σα-σε-ρα ναυ-θου-ραυ ρι ή-ραυ η ρα ρα-σα ρι
 η-γ-ρα Τύπα σάββα-σε-ρι
 ναυ-θου-ραυ ρι ρι-ραυ θ-ναυ-ραυ ήαυ ρ-σα-ρι-α ρου ρι θ-ραυ-υοι
 ρου ρι ρα-υα ρου ρι θ-ραυ-υοι ρου ραυ ρα-υοι
 Τύπα σάββα-σε-ρι υ-πα-κο-υ-ραυ ήα
 υ-ρι θ-σα-σε-ρα ναυ-θου-ραυ ρι ή-ραυ η ρα ρα-σα ρι
 η-γ-ρα

ρι υαυ-θου-ραυ ρου ραυ ρα-υοι ρου ραυ ρα-υοι
 ρι υαυ-θου-ραυ ρου ραυ ρα-υοι ρου ραυ ρα-υοι

ρι υαυ-θου-ραυ ρου ραυ ρα-υοι ρου ραυ ρα-υοι ρου ραυ ρα-υοι

ρι υαυ-θου-ραυ ρου ραυ ρα-υοι ρου ραυ ρα-υοι ρου ραυ ρα-υοι

ρι υαυ-θου-ραυ ρου ραυ ρα-υοι ρου ραυ ρα-υοι ρου ραυ ρα-υοι

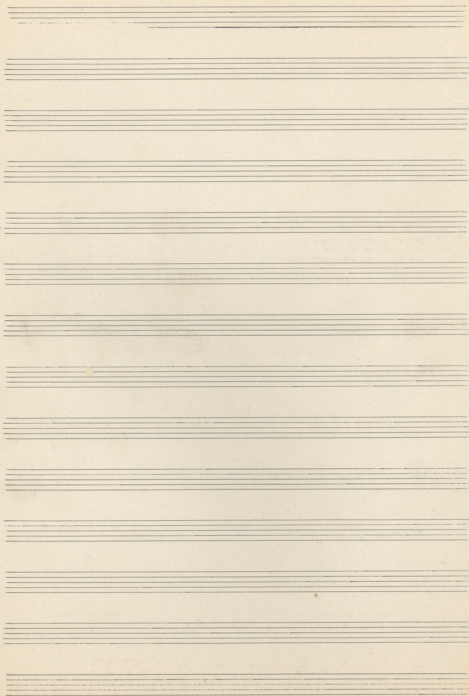
ρι υαυ-θου-ραυ ρου ραυ ρα-υοι ρου ραυ ρα-υοι ρου ραυ ρα-υοι

ρι υαυ-θου-ραυ ρου ραυ ρα-υοι ρου ραυ ρα-υοι ρου ραυ ρα-υοι

ρι υαυ-θου-ραυ ρου ραυ ρα-υοι ρου ραυ ρα-υοι ρου ραυ ρα-υοι

ρι υαυ-θου-ραυ ρου ραυ ρα-υοι ρου ραυ ρα-υοι ρου ραυ ρα-υοι

ρι υαυ-θου-ραυ ρου ραυ ρα-υοι ρου ραυ ρα-υοι ρου ραυ ρα-υοι
 ρι υαυ-θου-ραυ ρου ραυ ρα-υοι ρου ραυ ρα-υοι ρου ραυ ρα-υοι
 ρι υαυ-θου-ραυ ρου ραυ ρα-υοι ρου ραυ ρα-υοι ρου ραυ ρα-υοι
 ρι υαυ-θου-ραυ ρου ραυ ρα-υοι ρου ραυ ρα-υοι ρου ραυ ρα-υοι



Тенор

Tw - - ps aay ja - wsi-py vj-xa kas wo

pa pi a - va-ya uai uii aai (3) aai-ya aai-ya aai-ya ai -

ja-xi-va Tu-qa aai-a-i-i-ai

ua-ru uap-a-a ai-xi-ay-a uai - - ai xai uai-wo-pi-a uai-wo a-a-wo -

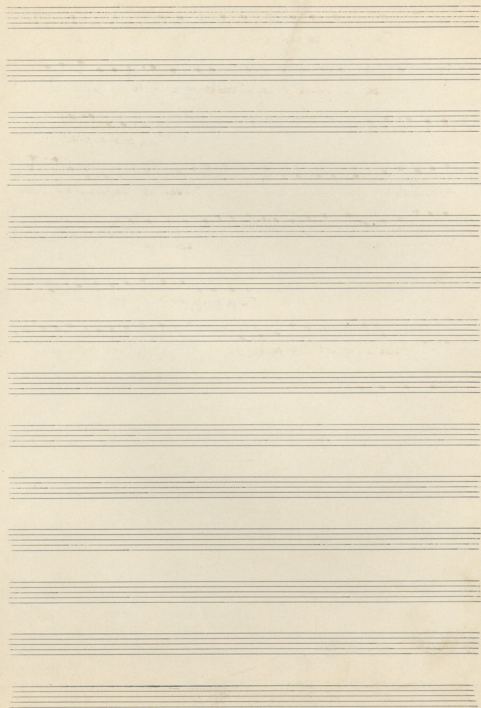
rai-a-wo-di-ua aai xai a-a-a-va uai-ru ai-a-di-ua

Tu-qa aai-ja-wsi-py vj-xa-wo-va-ya-ai kas

u-pi-a-ua - - vj-xa uai uii aai-ya-ai aai-ja-ai vj-ya-ai ai

ja-xi-va.

Empty musical staves for accompaniment or additional parts.



Bassi

Handwritten musical notation on a single staff in bass clef with a key signature of one flat (Bb) and a common time signature (C). The notes are quarter notes and eighth notes. Below the staff is the first line of handwritten lyrics in a non-Latin script.

Handwritten musical notation on a single staff in bass clef with a key signature of one flat (Bb). The notes are quarter notes and eighth notes. Below the staff is the second line of handwritten lyrics.

Handwritten musical notation on a single staff in bass clef with a key signature of one flat (Bb). The notes are quarter notes and eighth notes. Below the staff is the third line of handwritten lyrics. A circled number '3' is written at the end of the staff.

Handwritten musical notation on a single staff in bass clef with a key signature of one flat (Bb). The notes are quarter notes and eighth notes. Below the staff is the fourth line of handwritten lyrics. A circled number '4' is written at the beginning of the staff.

Handwritten musical notation on a single staff in bass clef with a key signature of one flat (Bb). The notes are quarter notes and eighth notes. Below the staff is the fifth line of handwritten lyrics.

Handwritten musical notation on a single staff in bass clef with a key signature of one flat (Bb). The notes are quarter notes and eighth notes. Below the staff is the sixth line of handwritten lyrics. Circled numbers '6', '7', and '8' are written at the end of the staff.

Handwritten musical notation on a single staff in bass clef with a key signature of one flat (Bb). The notes are quarter notes and eighth notes. Below the staff is the seventh line of handwritten lyrics.

Handwritten musical notation on a single staff in bass clef with a key signature of one flat (Bb). The notes are quarter notes and eighth notes. Below the staff is the eighth line of handwritten lyrics. A circled number '9' is written at the end of the staff.

Handwritten musical notation on a single staff in bass clef with a key signature of one flat (Bb). The staff contains a few notes followed by a double bar line and then rests.

Handwritten musical notation on a single staff in bass clef with a key signature of one flat (Bb). The staff contains rests.

Handwritten musical notation on a single staff in bass clef with a key signature of one flat (Bb). The staff contains rests.

Handwritten musical notation on a single staff in bass clef with a key signature of one flat (Bb). The staff contains rests.

Handwritten musical notation on a single staff in bass clef with a key signature of one flat (Bb). The staff contains rests.

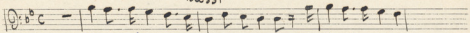
Handwritten musical notation on a single staff in bass clef with a key signature of one flat (Bb). The staff contains rests.

Esquissin

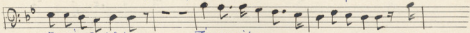
I

Handwritten musical score for guitar, consisting of 11 staves. The notation includes treble clef, key signature of one sharp (F#), and various rhythmic values. The score features melodic lines, chords, and technical markings such as "3º arpeg" and "tr". The piece concludes with a double bar line and a final chord.

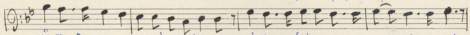
Bassi



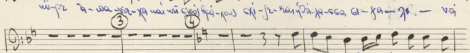
Tr-pg aaijja-gia-py vi-pka ho-vi-xol kas vi-pra-aa-vie



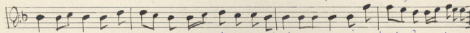
ka mai maia) fi-xol Tr-pg aaijja-gia-py vi-pka ho-vi-xol kas



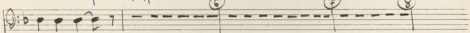
vi-pra a-aa-ga-ka mai vi) fi-xol xi-je-kai-ka-ka-aa ci-ga-je - va



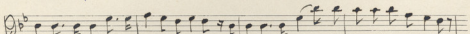
Tr-pg a a -vi-je - - va



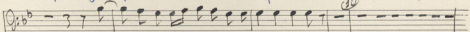
vi) - z ma-p-ka) ci-je xi - a) a - vi) - ca - ka-kai) - vi) - a) - vi) - aa-aa) xi-je - ci-ga-va-vie) vi)



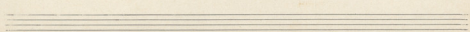
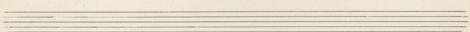
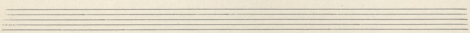
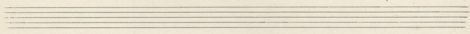
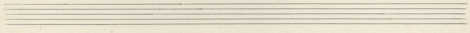
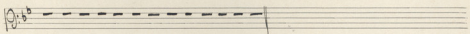
aa-vi) - vi)



Tr-pg aaijja-gia-py vi-pka ho-vi-xol kas vi-pra-aa - vi) - xi-je-kai) fi-xol

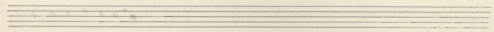


xi-je-kai) xi) - xi) - ka-aa) ci-ga-je) - va



③

Handwritten musical notation for the first system, consisting of three staves. The top staff is a vocal line with various notes and rests. The middle staff is a piano accompaniment with chords and melodic lines. The bottom staff continues the piano accompaniment. The word "DA CAPO" is written above the final measure of the bottom staff.

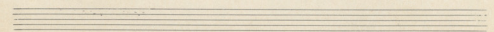
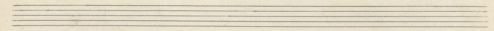


Handwritten musical notation for the second system, consisting of two staves. The top staff is a vocal line with notes and rests. The bottom staff is a piano accompaniment with chords and melodic lines.

Handwritten musical notation for the third system, consisting of two staves. The top staff is a vocal line with notes and rests. The bottom staff is a piano accompaniment with chords and melodic lines.

Handwritten musical notation for the fourth system, consisting of two staves. The top staff is a vocal line with notes and rests. The bottom staff is a piano accompaniment with chords and melodic lines.

Handwritten musical notation for the fifth system, consisting of two staves. The top staff is a vocal line with notes and rests. The bottom staff is a piano accompaniment with chords and melodic lines.

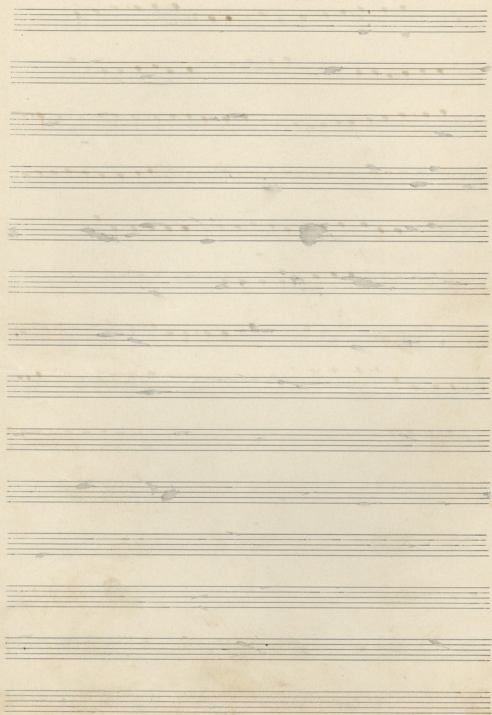


Bassi

Handwritten musical score for Basses, consisting of ten staves of music with lyrics in a non-Latin script. The score includes various musical notations such as rests, notes, and bar lines, along with circled numbers 3, 4, 6, 7, 8, and 10. The lyrics are written below the notes.

Tu-pa aiy ja-vor-py vi-pa-to-vi-xos kas vo-pr a-va-vor
 ja vai vi-voip-pa-xos Tu-pa aiy ja-vor-py vi-pa-to-vi-xos kas
 vi-pr a-va-vor ja vai vi-voip-pa-xos gi-jr-vaip-pa-xos ei-ja-ji - va
 Tu -- pa a-va-voip-pa-xos
 va-va-voip-pa-xos gi-jr-vaip-pa-xos vi-voip-pa-xos
 vi-voip-pa-xos gi-jr-vaip-pa-xos
 Tu-pa aiy ja-vor-py vi-pa-to-vi-xos kas
 vi-pr a-va-vor - va-va-voip-pa-xos gi-jr-vaip-pa-xos
 ja-ja-va.

Five empty musical staves for Basses, each consisting of a five-line staff with a clef and key signature.



Bassi

Two-pa aoi-gi-ge-pu vi-xa ho-va-xad has u-pe-a-ot-vez

xi nei uicai-foi-xad Two-pa aoi-gi-ge-pu vi-xa ho-va-xad has

u-pe-a-va-vez xi uicai-foi-xad xi-je-ze-ti-xe-ge ei-foi-xi-va

Two-pa a²a-voi-je-va

u-ze uap-oi-gi-xi-an a-uai-ge-ze-hai-hai-? -e-ge-pi-ge-ai-uai-ge-va-va-va

Gua-va-va

Two-pa aoi-gi-ge-pu vi-xa ho-va-xad has u-pe-a-ot-vez-va-xi nei uicai-foi-xad

xi-je-ze-ti-xe-ge ei-foi-xi-va.

