

Mouras Georgios

Mikas Georgios

Handwritten musical score for the hymn "ΣΤΗΝ ΑΡΧΗ ΤΩΝ ΕΜΠΡΑΞΕΙΣΩΝ". The score is written on ten systems of five-line staves, each starting with a treble clef and a key signature of one flat (Bb). The music is primarily in 4/4 time, with some systems marked with a '9' time signature. The notation includes notes, rests, and dynamic markings such as 'Cem' (Crescendo), 'Do' (Diminuendo), and 'FA' (Forte). The lyrics are written in Greek below the notes, with some lines in blue ink.

**System 1:** *Cem* *Do* *FA*

**System 2:** *Cem* *Do* *Cem*

**System 3:** *Cem* *Do* *Cem* *Do* *Cem*

**System 4:** *Cem* *Cem* *Do* *Cem*

α κλη-του θε-ου πα-τρος ομο-ουσι-ου υιου ομο-ουσι-ου  
 α κλη-του θε-ου πα-τρος ομο-ουσι-ου υιου ομο-ουσι-ου

**System 5:** *Cem* *Cem* *Cem* *Do*

τη ει-ρηνη

**System 6:** *Cem* *Do* *Do* *Cem*

κλει-θη ην φω-τις ην. ομο-ουσι-ου ομο-ουσι-ου  
 δε-ου πα-τρος ομο-ουσι-ου υιου ομο-ουσι-ου

**System 7:** *FA* *Do* *Cem*

ημε-ων υι-ου το-υ υι-ου  
 ημε-ων υι-ου το-υ υι-ου

zem Do zem Do

ku. TE pu d'ho rpa'i si- ro pu. Su. se3 va ku.

siln zem siln zem

cu su Mpa Su. se3 va ku cu su

WATKINS GIBBS & W.E.G. - MANHATTEN, N.Y. - 4050 THE STAGE - LONDON - THE AUSTIN NO. 12

Com Do zem zem Do

Kai sou pu tou fi-  
Kai tou ney tou ka-

Do zem FA Do

In spo ori va - bri sou. vt Tou Xri - tou pu  
pu ka ka tou na va fi pu Xi tou ka

zem Do Do zem zem Do

Ten va. ni fi en h'kapila kiam tri st. poi Tou  
bri tou tou pa sou so en na tou ka tou.

zem zem FA zem

ψηφ  
α τα

Do loc m zem

E. pu h'pou tou sou

Do zem zem

pu. or or vt po ka va Spi si or kai.

(2)

ΕΜΑΛΟΣΑ ΜΕ ΤΗ ΖΩΗ

Μανώλης Αβραμίδης

Μίμης Γεωργίου

LA LA RE

MI MI RE SI LA MI<sup>7</sup>

LA RE MI

E ποι πο σα πο οι πο η που η-τρω

MI<sup>9</sup> LA MI

ητ να αψασι νη κηγ η-τρω ηη. τρη α

LA MI RE

πο κηω το πο ηη ηηης φα.

SI MI LA

ρη συ | ε. ρη πο ηη τρωφ ρη κη'ε χη. οη

LA MI<sup>7</sup> LA

η εη. ποι πο

Marios Edraginos

3 ΜΗΤΕΣ ΖΟΥΜΕ Σ' ΑΛΛΗ ΧΩΡΑ

Marios Edraginos

LA LA RG

LA LA RG LA

Mi LA

Μη μας γου ήτ  
 μη μας γου ήτ  
 μη μας γου ήτ  
 μη μας γου ήτ

Μη μας γου ήτ  
 μη μας γου ήτ

και δώ το μη. π. γου ήτ  
 και με γου και  
 μη. μας γου ήτ

και δώ το μη. π. γου ήτ  
 και με γου και  
 μη. μας γου ήτ

και δώ το μη. π. γου ήτ  
 και με γου και  
 μη. μας γου ήτ

μη. π. γου ήτ μη. π. γου ήτ  
 μη. π. γου ήτ μη. π. γου ήτ

μη. π. γου ήτ μη. π. γου ήτ  
 μη. π. γου ήτ μη. π. γου ήτ

μη. π. γου ήτ μη. π. γου ήτ  
 μη. π. γου ήτ μη. π. γου ήτ

κα. τι. τε τοιο  
 και τη. αιο φα.  
 κα. τι. τε τοιο  
 και τη. αιο φα.

κα. τι. τε τοιο  
 και τη. αιο φα.  
 κα. τι. τε τοιο  
 και τη. αιο φα.

κα. τι. τε τοιο  
 και τη. αιο φα.  
 κα. τι. τε τοιο  
 και τη. αιο φα.

Handwritten musical notation for the first system. The treble staff contains a melody with notes and rests. The bass staff contains a bass line with notes and rests. The lyrics are written below the staves.

Lyrics:  
 Ka-ti-te-toio      On-va-bai      va  
 Ka-ti-are-pa      E-tang-pai      va  
 Ka-ti-ape-ri      va-va-bai      va

Handwritten musical notation for the second system. The treble staff contains a melody with notes and rests. The bass staff contains a bass line with notes and rests. The lyrics are written below the staves.

Lyrics:  
 Kai-se-pa-ti-ko  
 Kai-<sup>si</sup>-m-pa-<sup>si</sup>      pa-<sup>si</sup>      pa-<sup>si</sup>  
 Kai-se-pa-ti-ko      pa-<sup>si</sup>

Empty musical notation for the third system, consisting of a treble staff and a bass staff.

Empty musical notation for the fourth system, consisting of a treble staff and a bass staff.

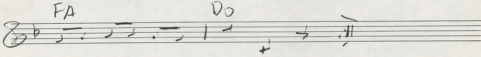
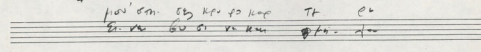
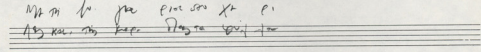
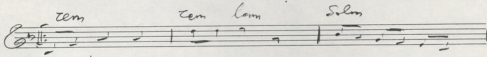
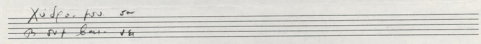
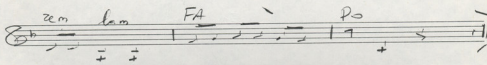
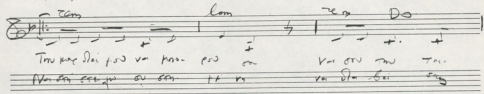
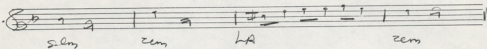
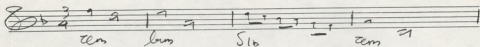
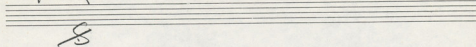
Empty musical notation for the fifth system, consisting of a treble staff and a bass staff.

Empty musical notation for the sixth system, consisting of a treble staff and a bass staff.

④ ΜΕΤΗ ΖΩΓΡΑΦΙΑ ΣΤΟ ΧΕΡΙ

Marios Eleftheriou

Mimis Pelyssinos



NOTES QUOTE & MARKS - TRANSLITERATION - © BY THE STOKES - ARMINI - INC. 61-150 NO 12

5 ΣΤΟΥ ΚΑΤΟ ΚΟΣΜΟΥ ΤΩΝ ΑΝΘΩ

Μανώλης Χατζηγιάννης

Mimis Tsiligiannis

5/8 *com* 8/8 *Do* 5/8 *com*

*Do* *ze* *Do* *Sib* *g silm*

*com* *silm* *5 com* *8 com* *sib*

*com* *FA* *Sib* *Do*

Στου κα του Κοσμου αν αυ.  
Στου κα του Κοσμου αν αυ.

*FA* *FA* *FA* *Sib - Do*

*ah.* *καυ γ'ε. νη* *νη ην Σου*  
*καρ Σι ογα* *σε κηρα βαρη*

*FA* *Silm* *FA*

*κε ον* *9ου. οβ.* *νη νη. Σου. κρυ.* *το ην ηι κ'ο*  
*ου-* *τη φα υε* *παρ* *τη κηρα κη.*

*Silm* *FA* *com* *Silm* *Do*

*κο οπυ το φαρ* *κα - κε ε - νη ην. Σι.* *την.*  
*αφ ητ κη πα.* *πε - σε* *Παρε* *νη ην. Σι.* *την.*



6 ZOUZA MIA XAPTINH ZOH

Mam, E. P. ...

Mica, E. P. ...

Sol — Ssa — RE — RE —

Zov. sa mi Xap. Ti mi lu

Sa — Sa — Da — Sa —

i Kia va va onip. To mi oi. pu. va

RE — Sa — RE Da RE

Ka. pu e va yeup ta Ma. na et on. Si ni /u.

RE — Sol — RE —

Kai pu ma. Sa sa pu ta pu. - Kia Xi. Sa H to

Sa — <sup>RE</sup> <sub>oex</sub> Da — RE — Sa —

Ka pu.

RE — Sa — S

FA                      cem solm                      LA

juv. Shi or E - va nauy ju ke pa

LA                      Aqya cem silm cem

H-Tav h'oi ju. m. ova

ce                      LA                      silm LA cem

E. va na ka

cem solm cem FA cem

ro apu po oxo

52321212

am Sib Do lom Sib silm

LA cem solm LA

LA Sib silm LA cem

(7) ΕΙΝΑΙ ΦΤΟΧΟ ΤΟ ΜΑΓΑΖΙ

Marios Alexiou

Mimis Pappas

2 lam zem lam Do lam zem LA

2 zem zem Sa Do Do

2 Do - Sa Fa Do 3 Sa Do 2 zem

Ει-ναι φτω-χο το μα-γα-ζι. 0-0-0. Κι-ε-σ-ε-  
 κι-ε-σ-ε-σ-ε

zem MI - 3 zem MI 2 lam zem lam MI  
 va et ka. 0-0-0. tis kai poy poi pa vov pa.  
 na se ka va. ze tis pou efor a-va.

lam 3 zem MI 2 zem MI  
 te 0-0-0 vov xou te pos pou to pou i  
 xris ka no apo xris ka vri xan xris

3 FA MI 2 MI lam MI lam zem MI  
 0-0-0 kai va te pou si ay for  
 ka o's xou te xan te va

Ti sapika (2)

Momms Egidios

8 TO SAPAKI

Momms Egidios

Handwritten musical notation on three staves. The first staff is in treble clef with a 5/4 time signature. The second and third staves are in bass clef. The notation includes various notes, rests, and dynamic markings such as *mf*, *f*, *ff*, and *ff*. There are also some Roman numerals like *I<sup>ivo</sup>* and *II<sup>ivo</sup>*.

Handwritten musical notation on two staves. The first staff is in treble clef. The second staff contains lyrics in Greek: *Es kai hi to Sei xves to on. pa ki tis yu xis*. Below the Greek lyrics are their phonetic transcriptions: *pa-ka-i hi to sei xves to on pa ki tis yu xis*.

Handwritten musical notation on two staves. The first staff is in treble clef. The second staff contains lyrics in Greek: *Mi zen MI zen MI tis tis tis tis tis*. Below the Greek lyrics are their phonetic transcriptions: *mi zen mi zen mi tis tis tis tis tis*.

Handwritten musical notation on two staves. The first staff is in treble clef. The second staff contains lyrics in Greek: *ka nos en geyu ei ses seu sta oyg-xw-pi ka. ves*. Below the Greek lyrics are their phonetic transcriptions: *ka nos en geyu ei ses seu sta oyg-xw-pi ka ves*.

Handwritten musical notation on two staves. The first staff is in treble clef. The second staff contains lyrics in Greek: *Mi zen MI lam*.

Two empty musical staves at the bottom of the page.

2

Ενας φωνητικός (2)

2 LA LA MI MI 3 LA MI LA

Φοργα στου με-γέ-του-μέ-του. Ημμε ον-γί-ρι μου

LA LA MI 3 LA

Kai sou xop ti tpa ta - - - vo.

RE RE RE 3 LA

Kpi pou sou vo. K. sou. Koc. 3 pou sou pou. 3

MI MI MI 3 MI LA

pou sou pou. 3 ta to sou. je pouxvi 3 ta ta - vo.

9 ΚΟΣΜΕ ΑΞΕΤΕ

Μανώλης Ελευθερίου

Μίμης Τελεγιάνης

8

lam lam lam

m1 lam lam

cem lam M1 lam lam M1

lam lam cem lam

Κοσμε ημετε κοσμε οφθητε  
 Κοσμε ημετε οφθητε  
 Κοσμε ημετε οφθητε

M1 lam M1 lam lam

κοσμη κοσμη οφθητε  
 ημετε οφθητε οφθητε  
 οφθητε οφθητε οφθητε

cem lam Σε Δα M1 lam

nois no vai ei. ki e. xis kai of kw. bte vai ei  
 ημετε οφθητε οφθητε οφθητε οφθητε  
 οφθητε οφθητε οφθητε οφθητε

M1 lam M1 lam

την τ και οφθητε οφθητε οφθητε οφθητε  
 οφθητε οφθητε οφθητε οφθητε  
 οφθητε οφθητε οφθητε οφθητε

Handwritten text, possibly a signature or date, located in the middle-left section of the page.

Handwritten text, possibly a signature or name, located in the lower-left section of the page.

Handwritten text, possibly a signature or name, located in the lower-middle section of the page.

Handwritten text, possibly a signature or name, located in the lower-right section of the page.



11 MIA TUNAICA

Yann Blandino

Marius Jerng

Sim FA# mim FA# SOL RE

LA RE Sim FA# LA Sim FA# - mim

Sim FA# Sim SI - mim  
FA# Sim Mia pu-voi-ka... pou-voi-ka po-va

FA# Sim FA# Sim RE LA Sim 3  
hi oi pu-oi-oi... Et pu-oi-oi pou-voi-ka

FA# Sim LA RE  
o - pi a - o3... ka - ka-poi-oi... po-va-poi-oi

mim FA# FA# Sim  
tr 70... au-pio-ka-ro X75

12 ΤΟΡΑ ΣΤΑ ΟΥΔΟΝΤΑ ΕΣΗ

Μανώλης Χατζηγιάννης

Μίμης Χατζηγιάννης

FA DO FA FA DO FA

FA <sup>slur</sup> LA LA <sup>cem</sup> LA <sup>cem</sup>

Tō va.

<sup>cem</sup> LA <sup>cem</sup> <sup>cem</sup> LA <sup>cem</sup>

no si noi va or'oi lo kai sta. sti. sta on-ve qui ki's va.  
 va va A. Ba vi ay ka'oi pa' pa' sta ti ko e'k'ko

FA DO FA FA DO FA

to. ya pi-ou Pe' xou q'is va on A. pa. so. pa po. va  
 pu q'is va pu si on ka' va ye ho va' ti ka pa' va

LA I VOLTA II VOLTA FA DO

tu A. pa. so yin tu. pa. sta. og.  
 ye ho pu ka'oi pa' pa' sta ti

FA sib DO sib DO FA FA DO

si-va e. sta si xou sti tu kai xai ni' o'ar'pa. no sta  
 tu va ye ho pu ka'oi pa' pa' sta ti ka'oi pa' pa' sta ti pu va va va va

DO sib sib DO FA

is. va ye. sta ki's ja tu. xou pu va. pa. no  
 si. o. pi on ka'oi pa' pa' sta ti ka'oi pa' pa' sta ti