

zem Do zem Do

ku. te podja nrai si- ro ku. sw. sz van fu.

siln zem siln zem

ci su Ma sw-sz van fu ci su

Com Do Com Com Do

Kai ou p. tou fi-

Do Com FA Do

h. spo oia va - bpi sou. vt Tou Xou pou pou.

Com Do Do Com Com Do

Tou. vni. nio ft en h. kapa klaon tai sp pai Tou

Com Com FA Com

pi d

Do Com Com

E. pu. h. pou nso ou

Do Com Com

h. n ou vt po ka va sp oi ou kou

2

ΕΜΑΝΟΕΛ ΜΕ ΤΗ ΖΩΗ

Marios Zografos

Mikis Pedarinas

LA LA RE

MI MI RE SI *for#* LA MI⁷

LA RE MI

E ma-ri-a pa-tri-ki-ni nou h-tou pa-

MI⁹ LA MI

pa-tri-a-ri-ni ki-ni h-tou pa-tri-a-

LA MI RE

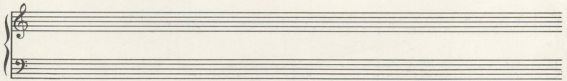
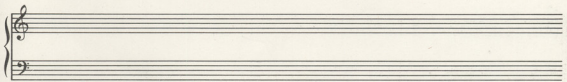
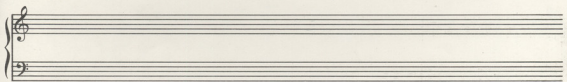
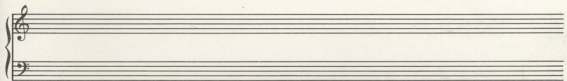
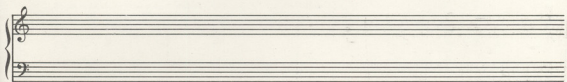
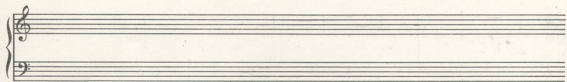
pro-ki-an-ten na-nis-fo-

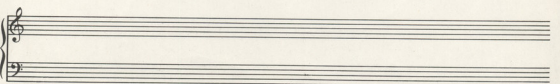
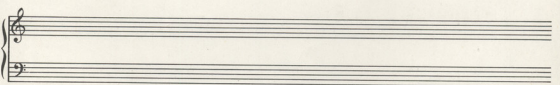
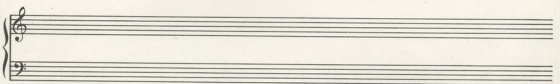
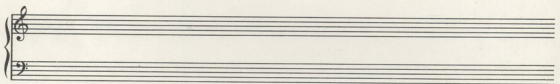
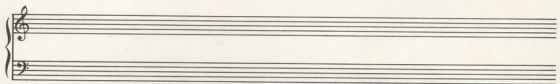
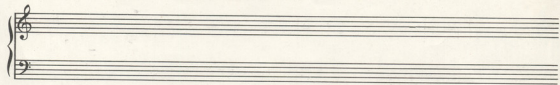
SI MI LA *for#*

pa-tri-je-fo-ou na-tou-tes es-ki-e-xa-ou

LA MI⁷ LA

na-eb-pei-pro





5 ΣΤΟΥ ΚΑΤΟ ΛΟΓΜΟΣ ΤΗΝ ΑΝΗ

Mano Haidaris

Mano Haidaris

com Do com

Do ze Do Silo silm

com silm 5 com com silm

com FA Silo Do

Στου κατo λογμου την ανη.

FA FA FA Silo Do

Και ο'γι. να ηη για σου

FA silm FA

Κε ηου. ηη. να. σου. και το ηη ηη κ'ο

silm FA com silm Do

Κο εηη το φαρ ηη - κε ε - να ηη. ηη. ηη.

FA cem silm LA

you sh or e - va nos tu pa me

LA

Agua cem silm cem

H - Tar - hi oi ju - ra - os

ce LA silm LA cem

E - va tu tu - o - ra ca - rni - ce - ja - ra - os tu - os

cem silm cem FA cem

ro - tu - o - ra - os

SARABANDA

am Sto Da - om Sto sily

LA cem silm LA

LA Sto silm LA cem

⑥ ЗОУСА МІА ХАПТІНН ЗНН

Мамы Эпосаўс

Міка, Федарына

Sol — Ssa — RE — RE —

Zov. sa mi Xp. Ti mi u

Sa — Sa — Da — Sa —

i k'ra va ya st'p. to mi st'p. ho. va

RE — Sa — RE Da RE

ka. sa ya e va yep. ha Ma. nh et ani. Sa' ju.

RE — Sol — RE —

Kai ju ma. Sa sa ho. ha. ju. - k'ra Xi. sa h. to

Sa — RE Da RE — Sa —

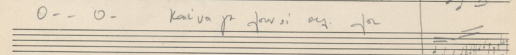
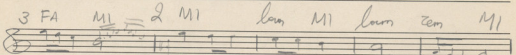
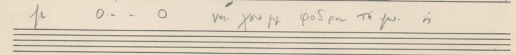
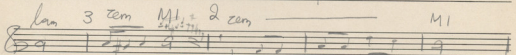
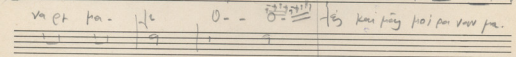
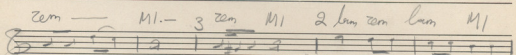
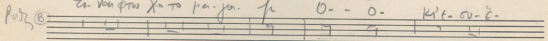
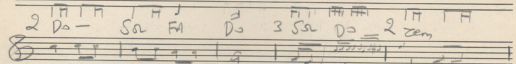
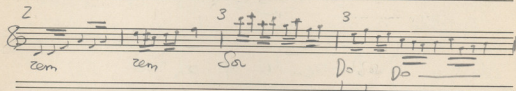
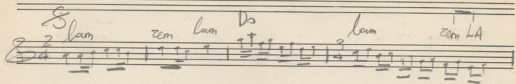
Ka ho.

RE — Sa — S

7 ΕΙΝΑΙ ΦΤΟΧΟ ΤΟ ΜΑΓΑΖΙ

Μανώλης Ελευθερίου

Μίμης Θεοφάνους



To sapaike (2)

lan cen M1 cen M1 lan cen

m pap. Sias oot to oot pai ke kiv-to

M1 cen M1 Sa la M1

bit cen sau ex Spi 1- oot vai out-

la x Sa la cen M1 M1 cen lan M1.

bit kic. ot va. ootv. oot pa vai bpa pa.

la la

Ives Ives

Tpo Tpo

Empty musical staves for further notation.

Manos Kefalogiannis

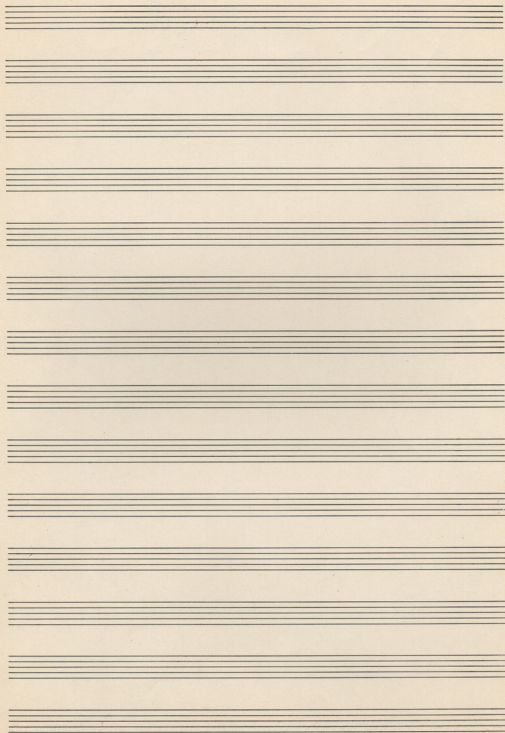
8) Το ΣΑΡΑΚΙ

Manos Kefalogiannis

Handwritten musical score for the song "Το ΣΑΡΑΚΙ" (The Saraki). The score is written on ten staves, with the first three staves containing the main melody and the remaining seven staves containing the lyrics and accompaniment. The music is in 2/4 time and features a key signature of one sharp (F#).

The lyrics are written in Greek and include:

la la sou Do
 MI zen la MI FA MI la MI
 la — Sa Do zen MI — la Sa MI-to
 zen la MI ze MI zen MI
 Η kai hi to Sei xos to sa pa ki tis ye xis
 MI — zen MI ze MI ti-ti
 la zen FA MI
 ka no an gha ei sas Sei sta ay-xo-pi ka. vas
 MI zen MI la



9 ΚΟΣΜΕ ΑΞΕΤΕ

Μανώλης Χατζιδάκις

Μίμης Περδικούνης

8

lam lam lam

M1 lam lam

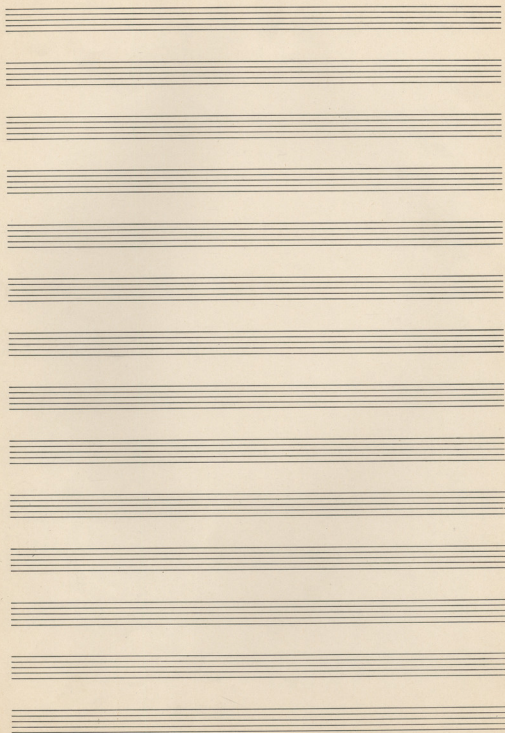
lam lam M1 lam lam M1

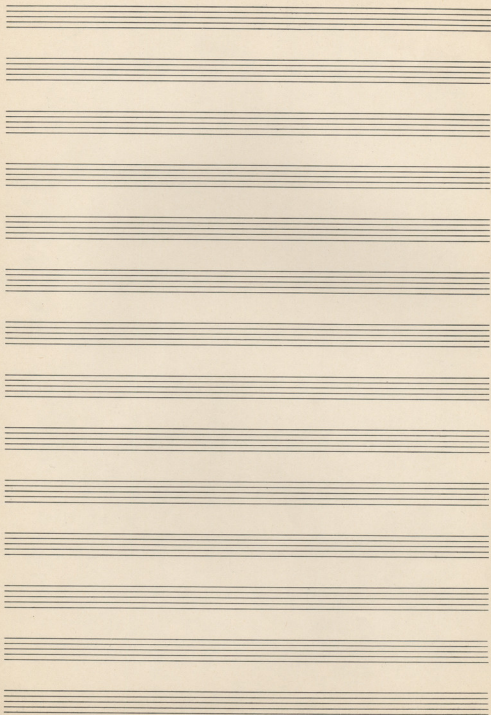
lam lam lam ΚΟΣΜΕ ΜΙΕΤΗ ΚΙ ΟΥΤΕ ΟΥ ΠΙ-ΤΗ

M1 lam M1 lam lam ΚΟΣΜΕ ΚΙ ΟΥΤΕ ΟΥ ΟΥ-ΤΕ ΣΕΝ ΟΥ ΡΟΙΟΙ ΦΕ

lam lam lam ΣΕΝ ΔΑ ΜΙ ΛΑΜ ΡΟΙΟΙ ΕΙ- ΚΙΣ-ΧΟΣ ΚΑΙ ΟΥ ΚΩ-ΒΑΡΟΙ ΕΙ

M1 lam M1 lam ΤΩ Τ ΚΑΙ ΟΥ ΤΑ ΚΟΣΜΕ ΟΥ ΟΥ-ΤΕ





10 ΣΤΟ ΜΠΑΚΟ ΤΗΣ ΕΓΓΙΣ ΣΤΟ ΜΠΑΡ

Μανώλης Βασιλείου

Μίμης Τσελεπίου

Canto

MI lam MI lam rem lam MI

marcato sample

ocx.

MI lam MI lam rem lam MI

Canto

FA MI lam la MI lam MI

Στο μπακό το έγγι-τε στο μπαρ σε τ'η-σαν

Sol FA MI la rem MI MI

πι-λά-ρι-σε-κα-τρί-σι
 Σ'η-κρυ-φά-ο-σμο-βί-α-τε
 Κα-ρ-πό-ρι-α-γ-ο-βί-α

To MITAP (2)

Handwritten musical notation for the first system. The top staff is a treble clef with a 9/8 time signature. The bottom staff is a bass clef. The music consists of piano accompaniment with chords and rhythmic markings. The chords are labeled: lam, tem lam, tem lam, MI, and tem. There are several accents (>) and slurs over the notes. A 'pas' marking is present in the bass staff.

Handwritten musical notation for the second system. The top staff is a treble clef with a 9/8 time signature. The bottom staff is a bass clef. The music includes vocal lines with lyrics and piano accompaniment. The lyrics are: lam Sou FA MI la FA MI. There are accents (>) and slurs over the notes. The piano accompaniment has a '3' marking above it.

E. vo xo, ö ta i kai ö-oo- nta ki'ö si sou-ot-ou vö-oo- nta

Handwritten musical notation for the third system. The top staff is a treble clef with a 9/8 time signature. The bottom staff is a bass clef. The music includes vocal lines with lyrics and piano accompaniment. The lyrics are: lam MI lam tem lam MI lam MI. There are accents (>) and slurs over the notes. The piano accompaniment has a '2' marking above it.

Ma- ö-tou st yn sou pou va

Handwritten musical notation for the fourth system. The top staff is a treble clef with a 9/8 time signature. The bottom staff is a bass clef. The music includes vocal lines with lyrics and piano accompaniment. The lyrics are: lam tem lam Sou tem MI. There are accents (>) and slurs over the notes. The piano accompaniment has a '3' marking above it.

ö-pri E. ki-vago ö ta tou van pou

Handwritten musical notation for the fifth system. The top staff is a treble clef with a 9/8 time signature. The bottom staff is a bass clef. The music includes vocal lines with lyrics and piano accompaniment. The lyrics are: lam MI lam MI lam tem lam. There are accents (>) and slurs over the notes. The piano accompaniment has a '3' marking above it.

Kou se-tu li-you souv. k. ju. ösö Kou-th-yo-pi. avn sou-pi.

To MIAP (3)

MI — lam MI — lam zom lam MI lam —
 Xrô
 pêg-tis pa pês ord tso-raj-tou.

zom lam zom lam MI zom MI —

MI zom MI zom MI — lam MI
 Bani-kav kap pa-tia touna-oo

lam MI lam a lam MI
 Kai sa vt kpo st op do ero qe vt
 Xpou pin

MI lam
 om yu Xp va Bpou-er
 E-d-e-raj

11 MIA TUNAIKA

Youni Rendi

Maria Yuliana

