

The page contains ten horizontal musical staves. The first staff has the handwritten text "2 MANDOLINA" written across it. The second staff has the handwritten text "QUA" written across it. The sixth staff has a circled number "1" written on it. The remaining staves are blank.

2 MANDOLINA

QUA

1

ΘΥΣΙΑ

Handwritten musical notation for the first system. It consists of two staves. The upper staff is labeled "Βιολωνι" (Violin) and contains a melodic line with a fermata and a slur. The lower staff is labeled "ζε" (Cello) and contains a bass line with a slur and a fermata. A "5" is written above the first measure of the upper staff. The system concludes with a double bar line and a key signature change to two sharps (F# and C#).

Handwritten musical notation for the second system. It consists of two staves. The upper staff is labeled "λαβ" (Clarinet) and contains a melodic line with a slur and a fermata. The lower staff is labeled "Βουζ" (Bass) and contains a bass line with a slur and a fermata. A "5" is written above the first measure of the lower staff. The system concludes with a double bar line and a key signature change to two sharps (F# and C#).

Handwritten musical notation for the third system. It consists of two staves. The upper staff is labeled "Σορ" (Soprano) and contains a melodic line with a slur and a fermata. The lower staff contains a bass line with a slur and a fermata. The system concludes with a double bar line and a key signature change to two sharps (F# and C#).

Handwritten musical notation for the fourth system. It consists of two staves. The upper staff contains a melodic line with a slur and a fermata. The lower staff contains a bass line with a slur and a fermata. The system concludes with a double bar line and a key signature change to two sharps (F# and C#).

ΛΑΟΥΣ $b^{\flat} \sharp^{\sharp} \sharp^{\sharp}$

Sol

2.

7 *com*

10 *espe*

3

com

6

I

15

sibm

FA

SOLB

9

6

Do

SOLB

3

cem

Handwritten musical notation for the first system, featuring a treble and bass clef with various notes and rests.

cem

20

RE

p

cem

Handwritten musical notation for the second system, including dynamic markings like 'p' and 'cem', and a circled measure number '20'.

cem

veceli

cem

Handwritten musical notation for the third system, with dynamic markings 'cem' and 'veceli'.

5

Sibm

Sibm

Handwritten musical notation for the fourth system, featuring a circled measure number '5' and dynamic markings 'Sibm'.

25

3

8

cem

Handwritten musical notation for the fifth system, including circled measure numbers '25' and '3', and dynamic markings 'cem'.

4.

Handwritten musical notation for the first system. The treble clef staff contains a sharp sign (♯) and a quarter note. The bass clef staff contains a '6' finger number and a sequence of notes: b_2, b_3, b_4, b_5, b_6 . The system concludes with a bar line and a '3' finger number above the treble clef staff.

Handwritten musical notation for the second system. The treble clef staff has a 'FA' label above it. The bass clef staff has a 'Sib m' label above it. The notation includes a sequence of notes: b_2, b_3, b_4, b_5, b_6 in the bass clef and $b_7, b_8, b_9, b_{10}, b_{11}$ in the treble clef.

Handwritten musical notation for the third system. The treble clef staff has a '6' finger number above it. The bass clef staff has a 'Sib m' label above it. The notation includes a sequence of notes: b_2, b_3, b_4, b_5, b_6 in the bass clef and $b_7, b_8, b_9, b_{10}, b_{11}$ in the treble clef. The system concludes with a bar line and a '7' finger number above the treble clef staff.

Handwritten musical notation for the fourth system. The treble clef staff has a 'Re' label above it. The bass clef staff has a '6' finger number above it. The notation includes a sequence of notes: b_2, b_3, b_4, b_5, b_6 in the bass clef and $b_7, b_8, b_9, b_{10}, b_{11}$ in the treble clef.

Handwritten musical notation for the fifth system. The treble clef staff has a 'Re' label above it. The bass clef staff has a '6' finger number above it. The notation includes a sequence of notes: b_2, b_3, b_4, b_5, b_6 in the bass clef and $b_7, b_8, b_9, b_{10}, b_{11}$ in the treble clef. The system concludes with a bar line and a '7' finger number above the treble clef staff.

10 7 8 9

(2e)

1 2 3 4 5

(2e)

6 6

Solo Do

6 6 3

3 RED

3 5

Solo

4 3 7 5

form

Handwritten musical notation for the first system. It consists of two staves. The top staff has a treble clef and a key signature of one flat (B-flat). The bottom staff has a bass clef. The notation includes a *f* dynamic marking, a slur over a sixteenth-note sequence, and a triplet of sixteenth notes. The word "Do" is written below the bottom staff.

Handwritten musical notation for the second system. It consists of two staves. The top staff has a treble clef and a key signature of one flat. The bottom staff has a bass clef. The notation includes a *REB* dynamic marking, a slur over a sixteenth-note sequence, and a triplet of sixteenth notes. The word "Do" is written above the top staff, and "Sib m" is written above the bottom staff.

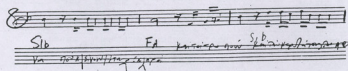
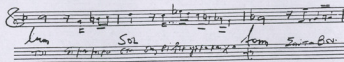
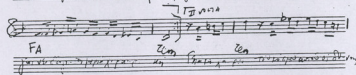
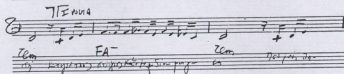
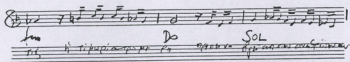
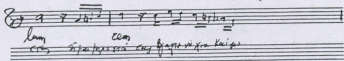
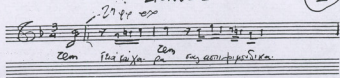
Handwritten musical notation for the third system. It consists of two staves. The top staff has a treble clef and a key signature of one flat. The bottom staff has a bass clef. The notation includes a *Sib m* dynamic marking, a slur over a sixteenth-note sequence, and a triplet of sixteenth notes. The word "So" is written above the top staff.

Handwritten musical notation for the fourth system. It consists of two staves. The top staff has a treble clef and a key signature of one flat. The bottom staff has a bass clef. The notation includes a *Do* dynamic marking, a slur over a sixteenth-note sequence, and a triplet of sixteenth notes. The word "Do" is written below the bottom staff.

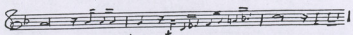
Three empty musical staves at the bottom of the page, consisting of two treble clef staves and one bass clef staff.

DIONUVS

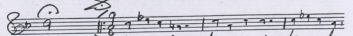
2



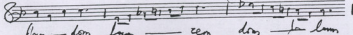
9



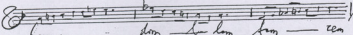
 Fa - - - - - dom Fa - - - - - dom



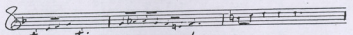
 dom - - - - - dom dom - - - - - dom dom - - - - - dom



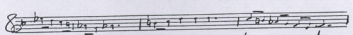
 dom - - - - - dom - - - - - dom - - - - - dom - - - - - dom



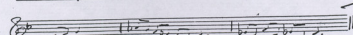
 dom - - - - - dom - - - - - dom - - - - - dom - - - - - dom



 Do - - - - - dom - - - - - dom - - - - - dom



 dom - - - - - dom - - - - - dom - - - - - dom



 Do - - - - - dom - - - - - dom - - - - - dom

8

ESERCIZIO

VI MIAPUNALIT (Entrata) ③

Handwritten musical notation on a five-line staff with a treble clef. It shows a sequence of notes: a whole note 'Do', followed by a quarter note 'Do', and then a series of eighth notes. The notes are labeled with 'Do' and 'Do' below them.

Handwritten musical notation on a five-line staff with a treble clef. It shows a sequence of notes: a quarter note 'Do', followed by a quarter note 'lan', and then a series of eighth notes. The notes are labeled with 'Do' and 'lan' below them.

Handwritten musical notation on a five-line staff with a treble clef. It shows a sequence of notes: a series of eighth notes labeled 'lan', followed by a quarter note 'Do', and then another series of eighth notes. There is a '2' above the first eighth note.

Handwritten musical notation on a five-line staff with a treble clef. It shows a sequence of notes: a quarter note 'Do', followed by a quarter note 'fom', and then a series of eighth notes. The notes are labeled with 'Do', 'fom', and 'fom' below them.

Handwritten musical notation on a five-line staff with a treble clef. It shows a sequence of notes: a quarter note 'Do', followed by a quarter note 'lan', and then a series of eighth notes. The notes are labeled with 'Do', 'lan', and 'lan' below them.

Handwritten musical notation on a five-line staff with a treble clef. It shows a sequence of notes: a quarter note 'Do', followed by a quarter note 'fom', and then a series of eighth notes. The notes are labeled with 'Do', 'fom', and 'fom' below them.

Handwritten musical notation on a single staff. The notation includes a treble clef, a key signature of one flat (B-flat), and a 2/4 time signature. The first measure contains a quarter note G4, a quarter note A4, and a quarter note B4. The second measure contains a quarter note C5, a quarter note D5, and a quarter note E5. The third measure contains a quarter note F5, a quarter note G5, and a quarter note A5. The fourth measure contains a quarter note B5, a quarter note C6, and a quarter note D6. The fifth measure contains a quarter note E6, a quarter note F6, and a quarter note G6. The sixth measure contains a quarter note A6, a quarter note B6, and a quarter note C7. The seventh measure contains a quarter note D7, a quarter note E7, and a quarter note F7. The eighth measure contains a quarter note G7, a quarter note A7, and a quarter note B7. The notation is heavily scribbled over with black ink. Below the staff, there are three empty staves. The word "Solo" is written below the first measure, and "Zem" is written below the second and third measures.

Handwritten musical notation on a single staff. The notation includes a treble clef, a key signature of one flat (B-flat), and a 2/4 time signature. The first measure contains a quarter note G4, a quarter note A4, and a quarter note B4. The second measure contains a quarter note C5, a quarter note D5, and a quarter note E5. The third measure contains a quarter note F5, a quarter note G5, and a quarter note A5. The fourth measure contains a quarter note B5, a quarter note C6, and a quarter note D6. The notation is heavily scribbled over with black ink. Below the staff, there are three empty staves. The word "Zem" is written below the second measure.

Empty musical staff.

Empty musical staff.

Empty musical staff.

Empty musical staff.

Empty musical staff.

Empty musical staff.

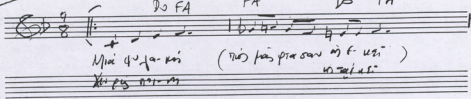
Empty musical staff.

Empty musical staff.

Saxophone

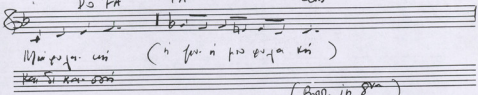
VI MIA POUAKA

Do FA FA Do FA



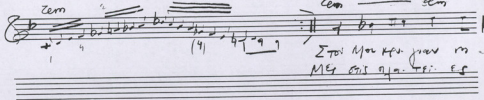
Mui pu-ka-ki (tui pu-ka-ki o f-ua)
Kipua-ki

Do FA FA Cem



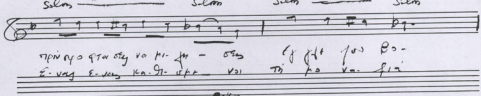
Mui pu-ka-ki (i pu-ka-ki pu-ka-ki)
Ka-ki-ka-ki

Cem Cem Cem Cem




(Bar in 8va)
Etoi Mui pu-ka-ki
Mui pu-ka-ki

Silm Silm Silm Silm



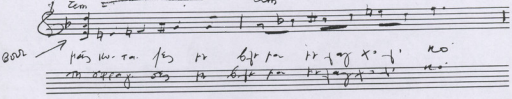
Etoi Mui pu-ka-ki
Mui pu-ka-ki
Etoi Mui pu-ka-ki
Mui pu-ka-ki

Silm Cem



Etoi Mui pu-ka-ki
Mui pu-ka-ki

Cem Cem



Etoi Mui pu-ka-ki
Mui pu-ka-ki

Solom — slm ^(R. pull) salt 7 LA ————— com com

1
Bass
2

Sopran:
 Vo cxi qxi ora in qm. pñs
 no so di. joi th ra xpaist
 Bass:
 nois su noi ra tu rru-ka
 ra fu ni pas ois xpaist

Cres

rit. per fine.

Coda

fom Do

Su lam lam

lam lam lam

4

ΕΙΣΑΓΩΓΗ 1^η ΦΟΡΑ ΤΟ ΨΥΧΕΙΟ

MPAFA =

8va2 + 8

8va2 2 8

1

2

1

2

Sib

Sib

Sib

Sib

mib

mim

largo

ΕΙΣΑΓΩΓΗ 2^η ΦΟΡΑ

ΚΑΝΟΝΙΚΑ: 8va

TO YUTEIO

fam Labm Sib

Sib Sib Sib Sib Labm

Labm Labm Labm Sib

Sib Mib hib mibm fam

fam Mib mibm fam mibm

Mh-pu-ray kap Sia too hni kap Sia-Xtu naig
D-sai-a-pa ni-cow Kai-Tax-Tax ve krai

mibm fam Mib mibm, fam fam mibm, fam

ni krey na-pa pu-Sim te-fan ray-pai krai
D-sai a-pa-cow va-cow Er-va-a-Sa-pai

fam Mib mibm fam

Ero to-je-pu vo-cow
Ma-sa-cow-pai-ya-i-o

3 mibm mibm form Mib

ô- j'oi à pi. Stai é-xoú na pa.
a va-ste-va-kaú ja va pí-voú

mibm form form mibm form form

tú- nta pio fu ni vt kni úta-erouká Si-a. tí-pa. Jis

form

Av é. Xis ka-tia tou ku-touí

form

ki-av. é. Xis omi. Jis-ou no-viú

Sibm Sibm Sibm form

tis mi av. te Xis St. tou. Jis

Sibm Sibm Sibm form

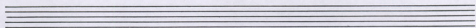
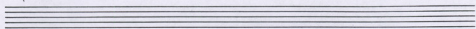
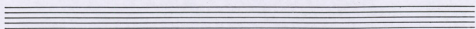
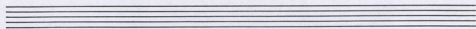
te tou fu ni xw. ei va kras

f *form*

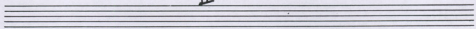
nis om ai - te xes et for is

Coda

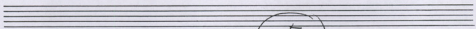
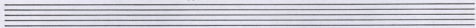
Empty musical staves for the remainder of the page.



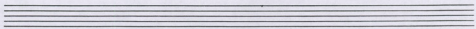
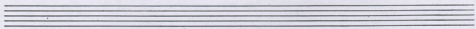
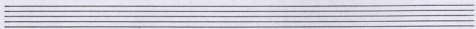
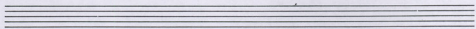
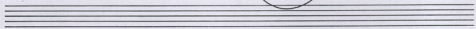
II



H APOVBA



5



(ff) *dim*

στ. πατ. ἀπ. πατ. οὐρανοῦ καὶ υἱοῦ τοῦ υἱοῦ τοῦ πατρὸς
 ἑκτεροῦ τοῦ ἐκτεροῦ ἑκτεροῦ καὶ πατὸς ἀπ. Χρῆ

dim *Solo*

Ἡσυχία καὶ εὐφροσύνη καὶ ἡσυχία καὶ εὐφροσύνη
 καὶ ἡσυχία καὶ εὐφροσύνη καὶ ἡσυχία καὶ εὐφροσύνη

dim *Solo* *dim* *dim*

Ἡσυχία καὶ εὐφροσύνη καὶ ἡσυχία καὶ εὐφροσύνη
 καὶ ἡσυχία καὶ εὐφροσύνη καὶ ἡσυχία καὶ εὐφροσύνη

dim

Ἡσυχία καὶ εὐφροσύνη καὶ ἡσυχία καὶ εὐφροσύνη
 καὶ ἡσυχία καὶ εὐφροσύνη καὶ ἡσυχία καὶ εὐφροσύνη

dim *Solo* *dim*

Ἡσυχία καὶ εὐφροσύνη καὶ ἡσυχία καὶ εὐφροσύνη
 καὶ ἡσυχία καὶ εὐφροσύνη καὶ ἡσυχία καὶ εὐφροσύνη

Solo *dim* *dim*

Ἡσυχία καὶ εὐφροσύνη καὶ ἡσυχία καὶ εὐφροσύνη
 καὶ ἡσυχία καὶ εὐφροσύνη καὶ ἡσυχία καὶ εὐφροσύνη

Andante

tem LA silm
 Σεις Ατκα του Ατ κτ μβην πορ-νη φανταστ-

tem tem silm tem
 κη α- γο ρια και κο πιτσια σκοτω κτ να σου

LA Bb LA tem
 Α-voi fu ητη vov βι τυ χι σφκ να

fimm LA RE silm
 κη Α-voi fu οκτ να ηκ

silm tem
 η'αν- Γουζ 1-βα vi και κη ρια α.

tem silm silm tem
 Σεπτα κτ - να -

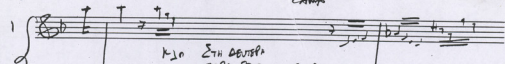
Handwritten musical notation on a grand staff. The treble clef staff contains a melodic line with a first ending bracket and a fermata. The bass clef staff contains a bass line with a 7 chord and a first ending bracket. The word "FIRST END" is written to the right of the first ending bracket.

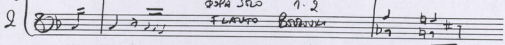
V

ΣΤΙΣ 10 ΤΩ ΑΕΚΕΜΑΡΗ

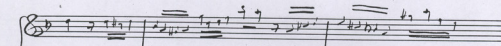
Борзена

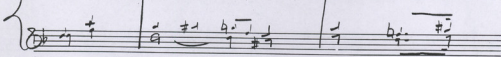
Капо

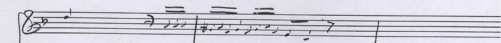
1. 

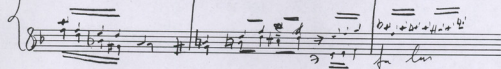
2. 

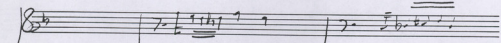
К-10 ЕТИ ДЕВІСКИ
ОПА СЛО 1. 2
+ CAPO Борзена

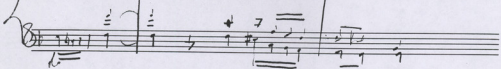


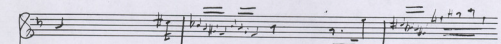


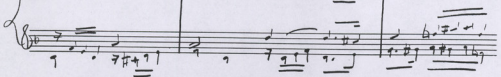





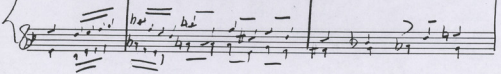


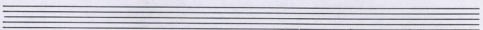
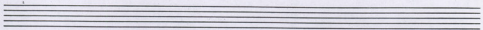
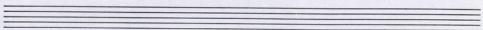
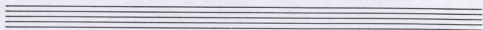




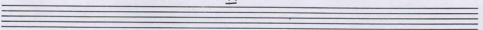




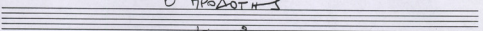




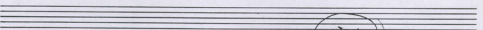
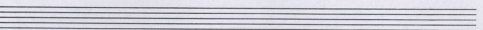
IV



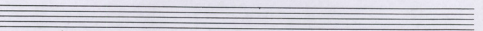
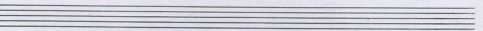
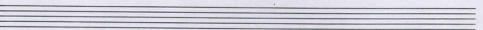
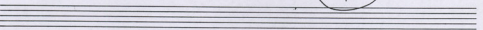
О ПРОВОДНИКЪ



Голубовъ 9



7



Ο ΠΡΟΔΗΤΗΣ

Αριθμός 9

Fisur

LA em LA em

LA LA em, RE, silm em

LA LA em, RE, silm em

ib)
silm silm LA LA em

silm silm LA LA em

centro em em sil# LA LA silm LA

centro em em sil# LA LA silm LA

Ku va poi san pt sa sono A- ga va
Kouta jout-ka korava founo oia oia

do# LA em em

do# LA em em

h-pou-to-reai hoi ero ko san Si
o-nou voi vour jout-ka founo oia oia

LA LA silm LA LA silm em

LA LA silm LA LA silm em

Er Xou va ni- ero fi- kor- hoi fi- va
jout-ka founo Xou- founo founo oia oia

LA LA ce ce LA solo

au. si. o. so fi. a. po. fr. po
 h. kar. Si. mi. pa. y. pi. v. sh. v. sh. ka. z. si

LA LA

H. kar. Si. mi. pa. y. pi. v. sh. v. sh. ka. z. si
 Ta. vi. lu. ra. fu. ca. te. ro. pa. ca. to. va. ti. si. mi

zen solo LA

E. va. po. so. ti. tou. em. tou. Ba. pa. ti. si. mi. pa. y.
 pa. v. si. mi. pa. y. pi. v. sh. v. sh. ka. z. si

solo solo zen LA

Si. mi. pa. y. pi. v. sh. v. sh. ka. z. si
 pa. v. si. mi. pa. y. pi. v. sh. v. sh. ka. z. si

LA zen LA

Si. mi. pa. y. pi. v. sh. v. sh. ka. z. si
 pa. v. si. mi. pa. y. pi. v. sh. v. sh. ka. z. si

solo LA zen

Si. mi. pa. y. pi. v. sh. v. sh. ka. z. si
 pa. v. si. mi. pa. y. pi. v. sh. v. sh. ka. z. si

TH 2^a FORA → FLAUTO --- O ПРОВОДНЫ --- 8^{va} BASS (S F FL.)

Bassoon

3^a ПРОВАДНА БИРАНИНА

Bassoon

1

2

FL --- BASS

1

2

1^o 2^o 3^o Cant. 2

(15)

1

2

3

2^o 3

BAGNE MESA

viii

ΣΠΑΡΤΗΤΟΙ ΚΑΙ ΠΑΡΙΣΑΙΟΙ

8

ΣΠΑΡΤΗΤΟΙ ΚΑΙ ΦΑΡΙΣΑΙΟΙ

ΕΞΑΓ. 1^η ΦΟΡΑ ΣΩΛ ΛΑΥΡΟ + ΑΚΟΥΣΙΜΗ [2^η ΦΟΡΑ - ΒΣΥΛ. ΤΑΒΕΤ]

Sim Sim Sim Sim

Sim lam lam - sim - sim lam

lam lam sim lam lam mim

RE mim

ΒΣΥΛ. ΚΙ ΔΑΗ ΤΗ ΜΕΡΑΙΑ 1^η ΦΟΡΑ (ΚΑΙ ΤΙΣ ΑΝΑΜΗΞΕΙΣ)

lam mim lam sim lam

ΣΠΑ. ΤΙ. W. ΤΕΥ ΟΡ - ΚΙ - ΟΥΤ ΨΟΙ
ΣΠΑ. ΤΙ. ΨΟΙ ΚΑΙ. ΠΑΙ - ΡΙ - ΣΟΝ - ΟΥ

lam mim sim lam mim

ΠΗΙ - ΚΑΝ ΟΥΑ ΚΑ. ΙΑΙ - ΒΡΥ - ΤΑ
ΠΗΙ - ΚΑΝ ΟΥΑ ΚΑ. ΒΑΙ - ΚΙΙ ΠΡΟ

lam mim lam sim lam

ΕΙ - ΠΕΥ. ΤΙ. ΟΥ ΠΕ - ΡΙ - ΠΙ ΒΕΙ
ΕΙ ΠΩ ΤΙ ΠΙ ΠΙ - ΡΙ. ΠΙ ΒΕΙ

lamm *mim* *Si* *lamm* *mim*

i-ja pou pa ki-a Si-ka
xra-pw to xaf ta-ki-pw

mim *3 mim* *3 mim* *lamm*

Tis kan pou pag oi stpa-tiw. tes niyasto niw
to pa. ca. Sa ma pa xra-pw niw va stpa niw

lamm *mim* *RE* *mim*

Sev ce ki pou. ta. no-ti
kaxai qen. pw. to vai-ki-pw

mim *3 mim* *3 mim* *lamm*

Ei van. s. poi. i. Si w. ty niw va sto niw
kan. sto te. ps. u. no xra-pw niw va sto niw

lamm *mim* *RE* *mim*

Hi pa. sw. ni. ko. sw. qep
kan. tu. ka. ta. Si. ka. pw

VII

TH PAMPAKUNIK

NATHN KALIS

40.11.1955

9

Timpian: Oja rei tawupa, aiSra, 'iSipus
 Xomacs, kaku, iSipin
 apakan ke sija an ni awajipaw
 so awawo sru pakuwawo'.

TH PAMHO BUNH
NA THN KHAIS

EISAT (K1 + Vcello)

LA silm LA silm LA LA zem

Bor. Fl

RE lam silm silm

Bor. Fl

silm lam silm silm silm LA

Vc Bor.

LA lam lam

ANTO

ទី ទី ទី ទី ទី ទី ទី ទី ទី ទី ទី ទី ទី ទី ទី ទី
 ទី ទី ទី ទី ទី ទី ទី ទី ទី ទី ទី ទី ទី ទី ទី ទី
 ទី ទី ទី ទី ទី ទី ទី ទី ទី ទី ទី ទី ទី ទី ទី ទី

(OBO)

ទី ទី ទី ទី ទី ទី ទី ទី ទី ទី ទី ទី ទី ទី ទី ទី
 ទី ទី ទី ទី ទី ទី ទី ទី ទី ទី ទី ទី ទី ទី ទី ទី
 ទី ទី ទី ទី ទី ទី ទី ទី ទី ទី ទី ទី ទី ទី ទី ទី

(Bb) *lamm* ----- *slam* ----- *lamm*

 Va - xu va Bp - m Pu - ho - ov.
 H Pu - ho ov m ru - vpt H -
 Me ko - ru - pa ru - ru - pa.

(Bb) *lamm* ----- *slam* ----- *lamm*

 va - ru - ru ru ov ho - ru Si.
 ov ov - ru xis ru yka ov ru H.
 C fuoi Ba ov ma - ru Eo.

(Bb) *lamm* ----- *LA* *ban* ----- *lam* ----- *LA* ----- *lam*

 va Tu - pu - ho - ov. va tu - pu - vai tai xfaot

LA RE LA *Ban* ----- *lam* -----

 (Klam) - - - - - va - ru - ov - va Si - ov

LA ----- *lam* LA ----- RE *GOA*

 va - ru - d b (K1) - - - - -



X

TA KRISTANA TA ABUESO

10

ΤΑ ΚΡΥΣΤΑΛΛΑ ΤΗΣ ΑΒΥΣΣΟΥ

(Eb) (Bm TACET)

LA LA zom MI

MI zom LA LA zom LA zom LA

Abc

(Bm)

Sol Sol RE RE

Ψη fai ora xrista kra. twi kav-pa ma.
Na yi- va quw ya. vo ten juv. Si

RE solm LA LA solm

vra kan gra viv Tou kai spw kav-pa kav- va
afaa vi ko Ti yi va ka-ta-ji sa

LA LA solm RE

a va Bw ja- tri Ses Me- sa. gra
kai voi kas o Str yi sa Me- sa. gra

RE RE solm RE solm RE

Taf ta Pa ta qu. Ti sou
Kpi gra. tou tis A. Bi- sou

RE RE RE sol RE silm RE

faw đơ. ưp xay pơ to vai gư nni oow
pơ-pơ-ơ-ơ-ơ nư ư ư ư ư-ư-ư ư ư ư

Silm LA LA sol LA silm LA

Mi on owa tap ra- ra vai gư. ti- oow
Mi on owa kư owa ư owa A- Bi oow

Silm LA LA silm LA sol LA

faw đơ ap xay. pơ to vai gư nni oow
pơ-pơ-ơ-ơ-ơ nư ư ư ư ư-ư-ư ư ư ư



I

KANA BOJNA

11

KAMA BOUNA

In Do

2EIMENEAD) dum

(Silo I Bouna) cem (dom) cem (dom) FA Mib LA Sila cem

Sim dum cem (a2) dum + Mib.

Ka - - ha Bou va Ka ha Bou
 ki - - boum Sila ka sila bou.

low Mib lowm Mib
 Sibm FA sibm FA

va - mou ke vt Sia ota ouve - q - ota ouve.
 Sia f pa pi kai tou ka epa se tou ka epa

Sib dum dum Mib
 Do cem cem FA

pa vtu ke va Ti - ke ku ta Ti - ke ku.
 si ku ta - te ke - ou ku pa pi sila ku

lowm Mib lowm Mib
 Sibm FA sibm FA

ta - te ou bou pa Bou pa ka ka no - Bou pa ka ka
 pa sag ta ou ai ho va kai ot ho va kai

Sib dum Mib
 Do cem FA

no vt ke va -
 nte pa ta - te

FA FA FA
 Mm

LAD Sib mibm form mibm form

zcm zcm zcm

dom dom dom

To - ho - vo - ra - To - ho - vo -

zcm Sbu lam

dom dom dom

ra - ti - m - tu - FA - tu - ra - to -

Do Do Do

Sib Sib Sib

tu - tu pa - to - tu - va - - - - - vo -

lam Do form Do

Sib Sib Sib Sib

o - so - ki - a - tu - o - so - ki - a - tu - so -

lam form lam

Sib mibm Sib

no - so - no - va - ri - o - no - - - - - vo -

Handwritten musical notation on a single staff. Above the staff are the words "lam", "lam", "Do", and "MI". Below the staff are the words "solm", "solm", "Si_b", and "RE". The notation includes a treble clef, a key signature of one sharp (F#), and a 7/8 time signature. The melody consists of eighth and quarter notes with various accidentals.

Handwritten musical notation on a single staff. Above the staff are the words "lam", "A~~lam~~", and "lam". Below the staff are the words "solm", "mi b n", and "sol". The notation includes a treble clef, a key signature of one sharp (F#), and a 7/8 time signature. The melody continues with eighth and quarter notes.

Handwritten musical notation on a single staff. Above the staff are the words "Do", "Do", and "Do". Below the staff are the words "Si_b", "Si_b", and "Si_b". The notation includes a treble clef, a key signature of one sharp (F#), and a 7/8 time signature. The melody features quarter and eighth notes.

Handwritten musical notation on a single staff. Above the staff are the words "Do", "FA", and "Si_bm". Below the staff are the words "Si_b", "Mi_b", and "lab n". The notation includes a treble clef, a key signature of one sharp (F#), and a 7/8 time signature. The melody includes quarter and eighth notes with various accidentals.

Handwritten musical notation on a single staff. Above the staff is a large stylized symbol resembling a capital 'S'. Below the staff are the words "Do" and "Si_b". The notation includes a treble clef, a key signature of one sharp (F#), and a 7/8 time signature. The melody consists of quarter and eighth notes.

Handwritten musical notation on a single staff, consisting of a treble clef and a 7/8 time signature, but no notes are present.

Handwritten musical notation on a single staff, consisting of a treble clef and a 7/8 time signature, but no notes are present.

Handwritten musical notation on a single staff, consisting of a treble clef and a 7/8 time signature, but no notes are present.

XII. ΤΟ ΤΑΞΙΔΙ

12

TO TEPATANO MRO TERATO

8

Sur dm Sur

Sur dm dm Sur

dm D fm f dm Sur dm

dm Sur dm $\frac{3}{8}$ Sur fm

Moi Spa oke - Hai ne tpaou va Sa. si.
 Hov. iu tpaou iu Sur tpa. pia - vi au

Sur dm dm Sur do

Duo Spa oke Hb Suppi ka car pia vi
 Sur Ha pou pa a ko pou pa vo

sldm dm sldm

Bor Sera pi
 Tan pi pa

sldm dm Kb Rb dm

Tai hun jaitou to Ax. i.
 Sur - o - Xou. pa. vo

Re dm sb² Re mmo dm Re

Eri ve qia spt m si-van paxtas kopia
mi fa na ota an paxtas to d'agla

I VOLTA

Mi pi. ku.
Mis sin rap.

II VOLTA

Su lo Su lo

vo vo vo

{ Sto mu mu. O. tau su

Su

Taj pe pe ta Bolew ps.
dia pro ra-xu otopa spt

vo vo vo

{ vo ta gi. si. pa-gu na. k'na no pa-vo k'na xa cu pa

dm dm Lto Su Am Su S

Ta. o. va. pa-pa-ra-xa pe va
no re-je-ri tan o' k'na pa. cu

FINO

13

EMMAOAS

2 5 3 5

4 6 5 6

7 8 6 6

9 10 9

11 12 5

13

