

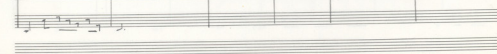
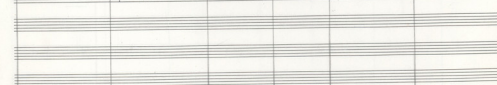
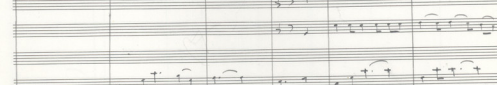
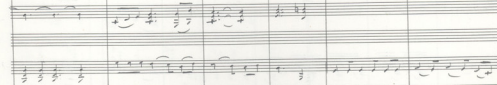
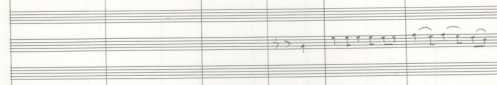
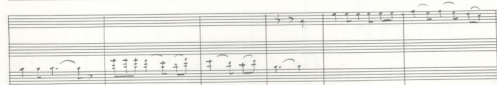
ANIKH (Agnus Dei)

(10)



Tu pa pe ni xi se su pa pe ni xi su pa

5 8



Тр *перес* *АМН*
 Тис А. ми. сы. ой. я. е. па. е. се. рес. га. е. се. е. х. р. и. с. т. и.
 5 8 5

Бал *15*

Фл

Об

Тп

Кп

Ак

Vc *f*

Об

Дамп

187160

Handwritten musical notation on a single staff with lyrics: "ca You see me here too na. fa"

Handwritten musical notation on a single staff, starting with a circled '2' and ending with a circled '25'. Includes some rhythmic markings.

Two empty musical staves.

Two empty musical staves.

Handwritten musical notation on a single staff, featuring a complex rhythmic pattern with many notes.

Handwritten musical notation on a single staff, featuring a complex rhythmic pattern with many notes.

Two empty musical staves.

Handwritten musical notation on a single staff, featuring a complex rhythmic pattern with many notes.

Handwritten musical notation on a single staff, featuring a complex rhythmic pattern with many notes.

Two empty musical staves.

Two empty musical staves.

Two empty musical staves.

Two empty musical staves.

Handwritten musical notation on a single staff, featuring a complex rhythmic pattern with many notes.



Tuba

Handwritten musical notation for Tuba, showing a staff with notes and rests, and a drum set notation below with '8', '5', and '8'.

Bass

Handwritten musical notation for Bass, showing a staff with notes and rests, and a circled '30' above the staff.

Trumpet

Handwritten musical notation for Trumpet, showing a staff with notes and rests.

Drum

Handwritten musical notation for Drum, showing a staff with notes and rests.

MARSHAL

Handwritten musical notation for MARSHAL, showing a staff with notes and rests, and a circled '30' above the staff.

MARSHAL

Handwritten musical notation for MARSHAL, showing a staff with notes and rests.

Alto

Handwritten musical notation for Alto, showing a staff with notes and rests.

VC

Handwritten musical notation for VC, showing two staves with notes and rests.

CB

Handwritten musical notation for CB, showing a staff with notes and rests.



8

ca Sai Ho no mi Sai e Je ya en eni 1a

7 8 8

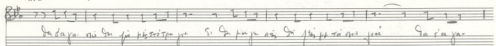
35

Amoroso

Vall

Andante (Soprano solo)

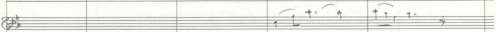
Andante (Soprano solo)

Te 

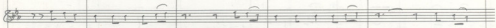
Se dajam mi se ja mislije po si se tupa asi se pljucka mi jeni Se i' a ja

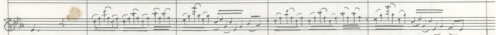
5 8

Bass 

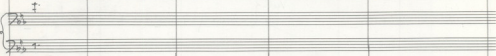
P 

OB 

H₂ 

K₁ 

At 

VC 

CB 

Drum 

Aria (Andante)

na Sa fi no pe ro fu. Sa Sa fi no pe ro fu. Sa fi no pe ro fu. Sa fi no pe ro fu. Sa fi no pe ro fu.

45

Tam.

MOTA
GARDIA

Te *Xi-ru-ye. Tu-pa sui-jen' t'ay .* *ca-ru' p'p. Xi-ru' ee' tu*

8 *5* *6* *9*

Bar

Fl

B♭

Hr

Kl

Ar

Vc

Ob

Tam

Drum

in apo usiāg pi for-af - Ku' cu nōō si-rom cu vō pōō pōō tōō vō

5

55 60

Fing

Tp *Solo* *Fing*

eng Sauppa sa-ra Piro pa-re ve - - - - - Tempo di X^{to} Sa-Bo pa-pa-re

5 8

Bsn *Solo* *Fing*

65

Fl *Solo*

Ob *Solo*

Hr *Solo*

Kl. *Solo*

Ar *Solo*

Vc *Solo*

CBs *Solo*

Tam

Drum

