

ΕΠΙΦΑΝΙΑ

ΓΙΩΡΓΟΣ ΣΕΡΕΡΗΣ

ΑΡΝΗΣΗ

♩ = 44

Score for SATB choir with lyrics in Greek. The score is in 4/4 time and B-flat major. The lyrics are: "Στο περὶ γὰρ - - ἡ τοῦ κρυ - - φοῦ κίς σποράν περὶ σπ - - κίς σποράν περὶ σπ - - κίς σποράν περὶ σπ - -"

Soprano (SATB): $\text{♩} = 44$

Alto (SATB): - - - - -

Tenore (SATB): Στο περὶ γὰρ - - ἡ τοῦ κρυ - - φοῦ κίς σποράν περὶ σπ - -

Basso (SATB): - - - - -

Score for piano accompaniment. The lyrics are: "εἰ δὲ ψα σα ηε το ηε σα ηε - - - εἰ ηα εἰ δὲ ψα σα ηε το ηε σα ηε - - - εἰ ηα εἰ δὲ ψα σα ηε το ηε σα ηε - - - εἰ ηα"

Piano (P): εἰ δὲ ψα σα ηε το ηε σα ηε - - - εἰ ηα

Piano (P): εἰ δὲ ψα σα ηε το ηε σα ηε - - - εἰ ηα

Piano (P): εἰ δὲ ψα σα ηε το ηε σα ηε - - - εἰ ηα

To ve po - flu - fo si pa sa te to - te sa
 To ve po - flu - fo si pa sa te to te sa
 To ve po flu fo si pa sa te to te sa
 si pa sa te to te sa

te - - - e ka to ve po - flu - fo
 te - - - e ka to ve po flu - fo
 te - e ka to ve po - flu - fo
 te - e - - ka to ve po - flu - fo

Pa w sa ai - - po ai sa - sa gra pa te to vo ka -
 Pa w sa ai - - po ai sa - sa - - gra pa te to vo ka
 Pa w sa ai - - po ai sa sa gra pa te to vo ka -
 Pa w sa ai - - po ai sa sa gra pa te to vo ka

Handwritten musical score for the first system, consisting of four staves. The lyrics are:

1st staff: τη ω. παρ α του φυ ση ρε ο̇ ηρα - - - τη και
 2nd staff: τ̇ς υ̇ο̇ κα - τη ω. παρ α του φυ ση ρε ο̇ ηρα - - - τη και
 3rd staff: τη ω. παρ α του φυ ση ρε ο̇ ηρα - τη και
 4th staff: τη ω. παρ α του φυ ση ρε ο̇ ηρα - τη και

Handwritten musical score for the second system, consisting of four staves. The lyrics are:

1st staff: οβη ση κη̇ι - γρα - φη ω. παρ α του φυ ση ρε ο̇
 2nd staff: οβη ση κη̇ι γρα φη ω. παρ α του φυ ση ρε ο̇
 3rd staff: οβη ση κη̇ι - γρα - φη ω. παρ α του φυ ση ρε ο̇
 4th staff: οβη ση κη̇ι γρα φη ω. παρ α του φυ ση ρε ο̇

Handwritten musical score for the third system, consisting of four staves. The lyrics are:

1st staff: ηρα - - - τη και οβη ση κη̇ι - γρα - φη
 2nd staff: ηρα - - - τη και οβη ση κη̇ι γρα φη
 3rd staff: ηρα - τη και οβη ση κη̇ι γρα - φη
 4th staff: ηρα - τη - - και οβη ση κη̇ι - γρα - φη

rit.

Handwritten musical score for four staves. The first two staves are in soprano and alto clefs, and the last two are in tenor and bass clefs. The lyrics are in Finnish. The score includes notes, rests, and a fermata at the end of the first line.

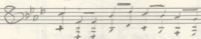
ta - - - - - Jos kiäly tai pa tt - pa - - ni
 ta - - - - - Jos kiäly tai pa tt pa.
 ta - - - - - Jos kiäly tai pa tt - pa - - ni
 ta - - - - - Jos - - - kiäly tai pa tt - pa

M. J. J. J.
 3^o - IV. 88
 B. J. J.

ΚΡΑΤΗΣΑ ΤΗ ΖΩΗ ΜΟΥ

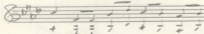
♩ = 46

Tutti
(in 8m)

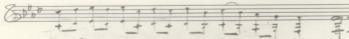


Κριτη σου εφ' ε - - -

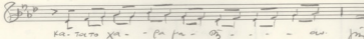
Finis



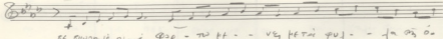
Κριτη σου εφ' ε - - -



Ταξι Σε εν ταξια να ηρωα κι - τρι εν Σε τρι



κα. τατα Χη - - φα φα - ος - - - ου. fms



σε οωνηξξξξξ φαρ - το ηη - - υγ ηηται φυλ - - τα ος ο -

And Kap hi va tri sau kapu gi - tau pa.

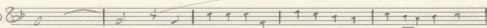
Suo. ju (Noi binihi te ni (kapaia))

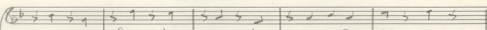
John *John*
Kapaia on July 1985
Nanapaia 1985
Baudia 1985

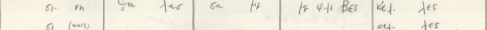
ANOH THS PETPA S

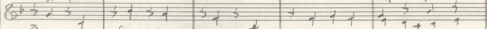
d = 92
CANTO *dalce*
 of Av Sh os ne - tau pa sau sau pa - oi va sau pa.

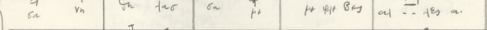
SOPRANI PP Av. Sh os ne tau pa sau sau pa oi va sau pa				
ALTI PP Av. Sh os ne tau pa sau sau pa oi va sau pa				
TENORI PP Av. Sh os ne tau pa sau sau pa oi va sau pa				
BASSI PP Av. Sh tau pa sau sau oi va sau pa				

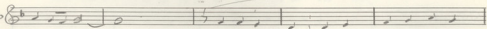
CANTO 
 Sa He He Bes nou pou Gu he. pou - oi - - tes a.

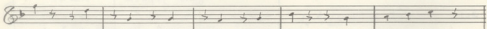
S 
 si. va Gu las sa he He He Bes oi. tes
 si (arrs) oi. tes

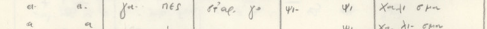
A 
 sa va Gu las sa he He He Bes oi. tes a.

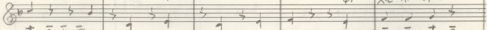
T 
 si. va Gu las sa he He He Bes oi. tes

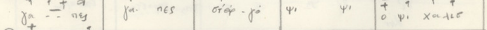
B 
 va Gu. las sa He He Bes nou pou Gu. he

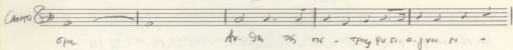
CANTO 
 ja - nes ja ni pou tou crap jo - - vi-xa-las.

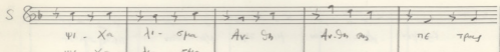
S 
 a. a. ja nes crap jo vi. vi Xa ni san
 a a ja nes crap jo vi. vi Xa ni san

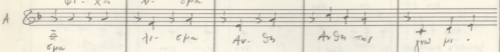
A 
 ja - nes ja nes crap jo vi. vi o vi. xa-las

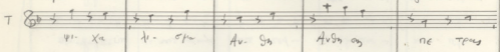
T 
 a. a. ja nes crap jo vi. vi Xa ni san

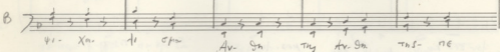
B 
 a. ja nes crap jo vi-xa ni san

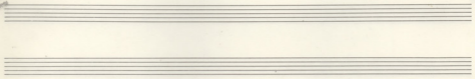
Chorus  *epa Av. Sa tis ne - trau pu si. o. juu tu -*

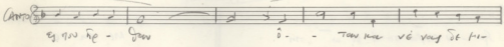
S  *vi - Xu ti - epa Av. Sa Av. Sa tis ne trau*

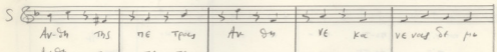
A  *vi - Xu ti - epa Av. Sa Av. Sa tis juu tu -*

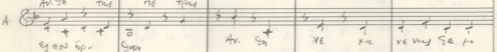
T  *vi - Xu ti - epa Av. Sa Av. Sa tis ne trau*

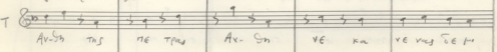
B  *vi - Xu ti epa Av. Sa tis Av. Sa tis - ne*

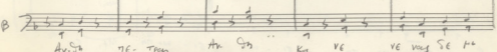


Chorus  *ty juu he - juu i - - tau tu ve vau se tu -*

S  *Av. Sa tis ne trau Av. Sa ve ku ve vau se tu*

A  *Av. Sa tis ne trau ty juu he - juu Av. Sa ve ku ve vau se tu*

T  *Av. Sa tis ne trau Av. Sa ve ku ve vau se tu*

B  *Av. Sa ne - trau Av. Sa .. ku ve ve vau se tu*

CANTO

S

A

T

B

CANTO

S

A

T

B

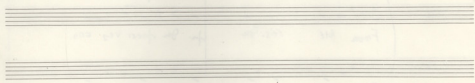
Ampl.

S

A

T

B



(Ni cwa si kpa 170 17a)

Ampl.

S

A

T

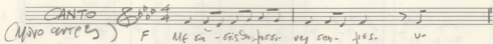
B

Asim
2. IV 82

ΜΕΛΑ ΣΤΙΣ ΘΑΛΑΣΣΙΝΕΣ
ΣΠΗΛΙΕΣ

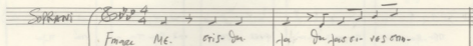
♩ = 100

CANTO
(MIXO QUINQUE)



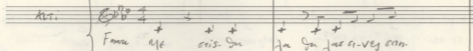
F ME en - cis - Gu - jaci - veg - ann - tis. u

SOPRANI



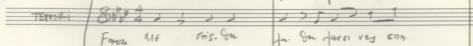
Fmace ME. cis - Gu. ja Gu jaci - veg ann.

ALTI



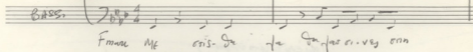
Fmace ME cis - Gu ja Gu jaci - veg ann.

TENORI

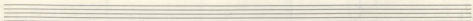
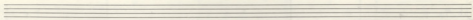
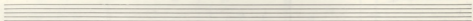
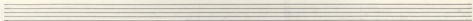
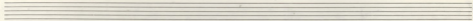


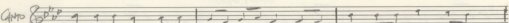
Fmace ME cis - Gu ja Gu jaci - veg ann.

BASSI

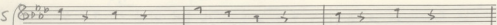


Fmace ME cis - Gu ja Gu jaci - veg ann.

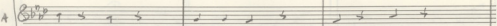


Anto 

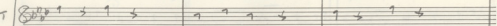
ναρ χεσ πρσι Σι ψα υ- ναρ- χεσ πρσι- να υ- ναρ χεσ πρσι Σι ψα υ-

S 

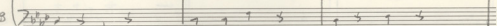
της Σε ψα-υ- ναρ- να- Σι

A 

της Σι ψα υ- ναρ- να- Σι

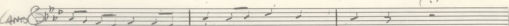
T 

της Σι ψα υ- ναρ- να- Σε

B 

της- Σε ψα υ- ναρ- να- Σε

... del ...

Anto 

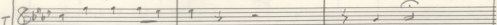
ναρ- χεσ πρσι- να υ- ναρ χεσ πρσι Εκ- στα ον

S 

να- α- γα- να υ- να- υτ υτ

A 

να- α- γα- να υ- να- υτ υτ

T 

να- α- γα- να υ- να- υτ υτ

B 

να- α- γα- να υ- να- υτ υτ

Tempo

Antro *Andante*

ö - ta eka pa - sau tu - ko - Xu - ju pa - pa - is vi ta kpa ti sa y ke

S *Andante*
ö - ö - ta eka pa Xu - ju pa - pa - is vi ta kpa ti

A *Andante*
ö - ö - ta eka pa Xu - ju pa - pa - is vi ta kpa ti

T *Andante*
ö - ö - ta eka pa Xu - ju pa - pa - is vi ta kpa ti

B *Andante*
ö - ö - ta eka pa Xu - ju pa - pa - is vi ta kpa ti

Rit

Thi appi = f2

Antro *Andante*

sa na ju pa - sau FF ME sa eis - su - ja - si

S *Andante*
ta pa sau ve vi FF MF sa eis - su - ja - si

A *Andante*
ta pa sau ve ve FF ME sa eis - su - ja - si

T *Andante*
ta pa sau ve ve FF ME sa eis - su - ja - si

B *Andante*
ta pa sau ve ve FF ME sa eis - su - ja - si

Tempo Primo

Amor Ves. em. - tiés

S Ves. em. - tiés *Tutti*
(BOUCHE FERMÉE)

A Ves. em. - tiés *F marc*

T Ves. em. - tiés *F marc*

B Ves. em. - tiés *F marc*

S

A

T

B

Handwritten musical score for four voices (Soprano, Alto, Tenor, Bass) and piano accompaniment. The score is in G major (one sharp) and 4/4 time. The tempo markings are *ral.* (rallentando) and *Tempo*. The piano part consists of a simple accompaniment with eighth and sixteenth notes.

Two empty musical staves, likely for a second system of piano accompaniment.

Handwritten musical score for four voices and piano accompaniment. The tempo marking is *Rall* (rallentando). The lyrics are in Italian: *Ma appi d=72*. The vocal parts have the following lyrics:

- Soprano: *Me ou crissu j'as ci*
- Alto: *Me ou crissu j'as ci*
- Tenor: *Me ou crissu j'as ci*
- Bass: *Me ou crissu j'as ci*

 The piano part includes a dynamic marking of *FF* (fortissimo) and a tempo marking of *d=72* (quarter note = 72 beats per minute).

♩ = 44

S *ves oon - ties* F *Me - pes ö* *jo - kka pes se* *ku - ta -*

A *ME pes ö* *jo kka pes se* *ku - ta*

T *ME pes ö* *jo kka pes se* *ku - ta -*

B *ME pes ö* *jo - kka pes se* *ku - ta*

Empty musical staves for piano accompaniment.

S *Me pes ö* *jo - kka pes se* *ku ta ja ota* *hai tin*

A *ME pes ö* *jo - kka pes se* *ku - ta ja ota* *hai tin*

T *ME pes ö* *jo - kka pes se* *ku - ta ja ota* *hai tin*

B *ME - pes ö - jo kka pes se* *ku - ta ja ota* *hai tin*

S
Kai Si' ce ju. pi fu u hu. - TE HE ju.

A
Kai Si' ce ju. pi fu - hu. - TE HE ju.

T
Kai Si' ce ju. pi fu - hu. - TE HE ju.

B

dim *p*

pi tes

pi tes

pi tes

pi tes

pi tes

M. J. ...
5.5.83

11

