

C

Andante 2.56

2 Flutes $\frac{8}{4}$ 1 Flute $\frac{7}{4}$ Sax
Contralto $\frac{8}{4}$ Sax
Alto $\frac{3}{4}$

mf gata espressivo e Cantabile

Dolce

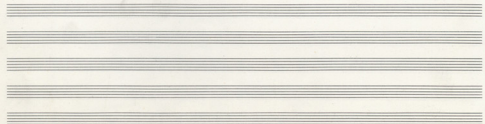
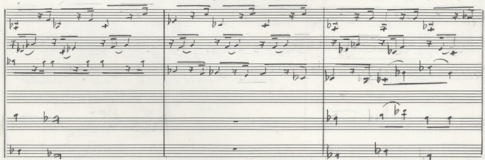
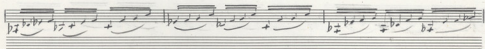
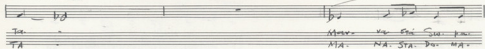
Violin I $\frac{8}{4}$
ppViolin II $\frac{8}{4}$
ppVcllo $\frac{3}{4}$
ppViola $\frac{8}{4}$ Cello $\frac{3}{4}$

Fl Bb - - - - -
 Fg 7 - - - - -
 Contr. Bb - - - - -

p molto espress e dolce
 T. A. ve. K. J. ro. no. qu.
 Ti. H. K. i. ro. Pa. Fa.

Guitar C *p molto espress e dolce*
 Vl. I Bb
 Vl. II Bb
 Ala Bb
 VC Bb
 Cb. 7 *pp*

p molto espress e dolce
pp



Handwritten musical score for guitar and voice. The score is written on a system of staves. At the top, there are two empty staves. Below them are two staves for guitar, labeled 'G' and 'F'. The main part of the score is for voice and guitar. The voice part has two lines of lyrics: 'TA PA TA' and 'TA PA TA' on the first line, and 'KI NI SU. GE MOU KI HEAR GA' on the second line. The guitar part is written in a single staff with various musical notations including notes, rests, and slurs. The score is divided into three measures by vertical bar lines. The first measure starts with a treble clef and a key signature of two flats. The second measure starts with a circled 'do' above the staff. The third measure continues the musical notation.

TA PA TA
 TA PA TA
 KI NI SU. GE MOU KI HEAR GA

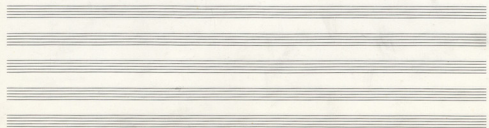
(do)

VIOL I
 VIOL II
 ALTO
 VC
 CLAR




Handwritten musical notation on a single staff with lyrics below it:


50. 7A. 11111 Ni-pu-ai' opa-ete pa
 11. 7A. Ba. Ku-Rua-Sira. Pe-ka.

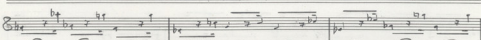


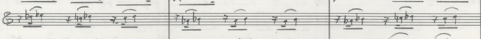
Fl B - - -
 Tg F - - -

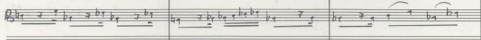
Cornet B - - - 

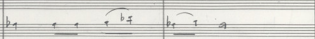
Man va croi ta-ta. pe-zi. Să
 Ma. NA. SA. NA-TA. NA. SA. DE

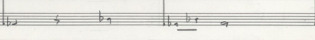
Guitar B 

Vc I B 

Vc II B 

Vl B 

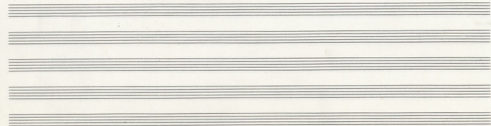
Vc B - - - 

CB F - - - 



Dep. nou. ve. re. ce. pis. su. tis
 LAN. Bon. ne. re. se. ris. Fu. tis
 DEU-

20



Dr
 Tg

Cantor

Guitar

Viol I
 Viol II
 Vla
 Vc
 Cb

In Via Ti-NO-TA E-AM PA-RI-AM
 I-NE-TI-PA-TA-E-LA PA
 ER-UNT IN-TER KI-RI-AM
 IN-TA-BA-KI-RI-AM.

Coro

Handwritten musical score for a Coro section. The score is written on multiple staves. The first staff is a vocal line with lyrics: "P die ca m". The second staff is a piano accompaniment line with lyrics: "af deca". The third staff is a vocal line with lyrics: "Ala. ca ca" and "Ala. sa. st.". The fourth staff is a piano accompaniment line with lyrics: "Ala. ca ca" and "Ala. sa. st.". The score includes various musical notations such as notes, rests, and dynamics.

Lyrics for the first staff: P die ca m

Lyrics for the second staff: af deca

Lyrics for the third staff: Ala. ca ca
Ala. sa. st.

Lyrics for the fourth staff: Ala. ca ca
Ala. sa. st.

Coro

 vl

 vly

 Corna

 Guitar

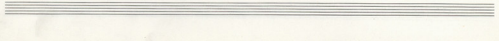
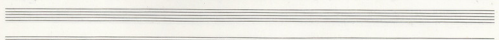
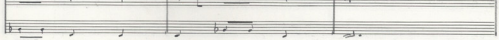
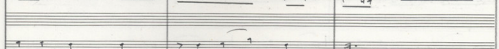
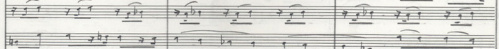
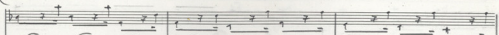
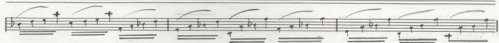
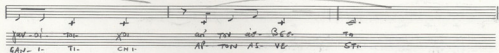
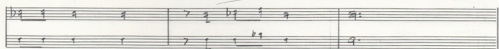
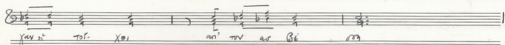
 Viol I

 Viol II

 Ala

 Vc

 Cb





Clarinet 8

In qu' est- ce que vous me dites
Ti. Pi. SAR. MOU. RI. KA. Gato KA

Dans
Pe.

Cvrt.

Vcllo 8

Vcllo 8

Alc.

Vc.

Obs.

ME *mf* *dolce* *mf* *dolce*

mf *dolce* *mf* *dolce*

la - ve - ze - ca - qui - tu - ka - ME + *mf* *dolce*
 za - ne - se - ra - pro - ni - kra - ME - *mf* *dolce* sa - sa -

mf *dolce* *mf* *dolce* *mf* *dolce* *mf* *dolce*

mf *dolce* *mf* *dolce* *mf* *dolce* *mf* *dolce*

Cello

VU XTA Kuo ni 16 m) 4 b2 Pof

Fl
Fg

CONTR

VU XTA Kuo ni 16 m) 4 b2 Pof
NI- CTHA- KE- TI- 2L STI- FEN-

GUITAR

Vcl I

Vcl II

Alc

Vc

CBs

Handwritten musical notation on a five-line staff. The key signature has one flat (Bb). The melody consists of quarter notes: Bb, G, F, E, D, C, Bb, A, G, F, E, D, C. Below the staff, the lyrics are: "Yaroi ra Xoi an ra ar Ba ra".

Handwritten musical notation on a five-line staff. The key signature has one flat (Bb). The melody consists of quarter notes: Bb, G, F, E, D, C, Bb, A, G, F, E, D, C. Below the staff, the lyrics are: "ra ra ra ra ra ra ra ra".

Handwritten musical notation on a five-line staff. The key signature has one flat (Bb). The melody consists of quarter notes: Bb, G, F, E, D, C, Bb, A, G, F, E, D, C. Below the staff, the lyrics are: "Yaroi ra Xoi an ra ar Ba ra".

Handwritten musical notation on a five-line staff. The key signature has one flat (Bb). The melody consists of quarter notes: Bb, G, F, E, D, C, Bb, A, G, F, E, D, C. Below the staff, the lyrics are: "Yaroi ra Xoi an ra ar Ba ra".

Handwritten musical notation on a five-line staff. The key signature has one flat (Bb). The melody consists of quarter notes: Bb, G, F, E, D, C, Bb, A, G, F, E, D, C. Below the staff, the lyrics are: "Yaroi ra Xoi an ra ar Ba ra".



Corn 1

Ma. NA. mouff. Pa. J. Pa. de. Pa. de. HI. SO. Ma. Vu. de. Mi. Ni. de.

Clarinet

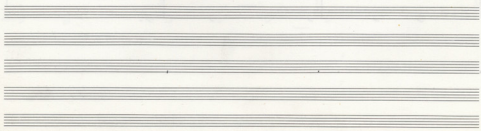
Vcl I

Vcl II

Alc

Vc

Obs

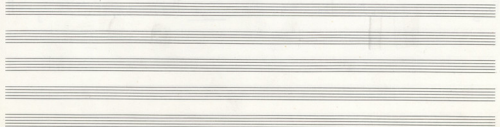




Handwritten musical notation with lyrics in two lines. The first line of lyrics is: "Te tu cas- ar. Spi. rouf. d'ar- ra pa d'ar- ras ra-". The second line of lyrics is: "Te-ro. S-ous An- tera- pouf. sou- bi- ri- Gi- so- louf- rouf- ra-".

Handwritten musical notation with notes and rests, including some accidentals and slurs.

Handwritten musical notation with notes and rests. A circled number "50" is written above the first measure of the second system. The notation includes various note values, rests, and accidentals.



Coro

R

T

Comer

Tutti
PocoKa - Ta - Ba - cae - Ka - Ta - vo - Ta -
Ka - Ta - vo - Ru - Ka - Ta - Na - Ta -

Cant.

Viol. I

Viol. II

Alc.

Vc.

Cb.

Handwritten musical score for voice and piano. The score includes a vocal line with lyrics and a piano accompaniment. The lyrics are: "May the stars be seen from the mountains". The piano part features complex chord progressions with many accidentals and dynamic markings like "p", "mf", and "f".

Vocal Line:

May the stars be seen from the mountains

Piano Accompaniment:

Dynamic markings: *p*, *mf*, *f*

Tempo/Character: *alleg*

Orlo

ca ca vi - xa ca ca fe ca

II

II

Canon

ca ca vi - xa ca ca fe ca
 ca - ca vi - xa ca ca fe ca

Canon

VI I

VI II

Alc

Vc

CB3

Handwritten musical notation for the first system, featuring a treble clef, a key signature of one flat (B-flat), and a 2/4 time signature. The melody consists of quarter and eighth notes. Below the staff, there are handwritten lyrics: "Fey juv oi ni Xu ni ni as Be in".

Handwritten musical notation for the second system, continuing the melody from the first system. It includes a treble clef, a key signature of one flat, and a 2/4 time signature. The lyrics "ni ni as Be in" are written below the staff.

Handwritten musical notation for the third system, continuing the melody. It includes a treble clef, a key signature of one flat, and a 2/4 time signature. The lyrics "FEN- GAN- I- ni- Xu- ni- ni- as- Be- in-" are written below the staff.

Handwritten musical notation for the fourth system, continuing the melody. It includes a treble clef, a key signature of one flat, and a 2/4 time signature. The lyrics "AP- TAN- AS- BE- STI" are written below the staff.

63

Handwritten musical notation for the fifth system, starting with a circled "63" in the left margin. It features a treble clef, a key signature of one flat, and a 2/4 time signature. The melody is more complex, with many beamed eighth and sixteenth notes. The lyrics "ni ni as Be in" are written below the staff.

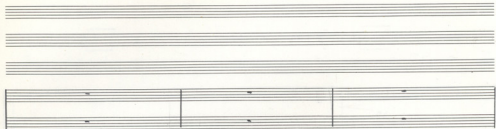
Corno $\text{B}\flat$

TACET

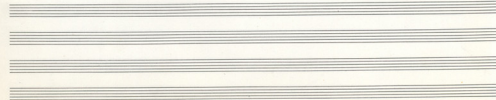
Fl $\text{B}\flat$ Fg $\text{F}\flat$ Corno $\text{B}\flat$

$\text{B}\flat$ | $\text{B}\flat$ $\text{B}\flat$ $\text{B}\flat$ $\text{B}\flat$ | $\text{B}\flat$ $\text{B}\flat$
 or nap. veg. raurpa vir. Xru. rru. can
 I - POR-RES - TOU. RA. NRU. RTI - PU - SAN

Corno $\text{B}\flat$ Viol I $\text{B}\flat$ Viol II $\text{B}\flat$ Vcl $\text{B}\flat$ Vc $\text{B}\flat$ Cb $\text{B}\flat$



a. Aa Tai- Sac Saci Xa-ja- Jan can
 o- LA- TA DA- SIA- Ho- lo- Gou- SAN.



II

Tr

CONTR

va. ta San è. Bte nes con ve. va
 PSI- LA DEN- E- Vce. PES- KA- ME- NA- Kri.

GIUITAR

VnI

VnII

Alc

Vc

CB

Detailed description of the musical score: The score is handwritten and spans several systems. The top system shows two empty staves for 'II' and 'Tr'. The 'CONTR' part has a vocal line with lyrics in Italian: 'va. ta San è. Bte nes con ve. va' and 'PSI- LA DEN- E- Vce. PES- KA- ME- NA- Kri.'. The 'GIUITAR' part features a complex rhythmic pattern with many accidentals. The lower systems include parts for 'VnI', 'VnII', 'Alc', 'Vc', and 'CB', each with their respective musical notation. A '30' rehearsal mark is present above the VnI part. The bottom of the page shows several empty staves.

Handwritten musical score for a piece titled "25c". The score is written on multiple staves. The top section consists of several empty staves. Below them is a system with a treble clef and a key signature of one flat (B-flat). The melody is written on a single staff with notes and rests. Below the melody, there are two lines of lyrics: "Ho Ho Ho Ho Ho Ho Ho Ho" and "Flo-685 Pa. Npa-Na. o- lo E- NA". The bottom section of the score consists of several systems of staves, each with a treble clef and a key signature of one flat. The notation includes various rhythmic values, accidentals, and slurs. The piece ends with a double bar line and a fermata symbol.

Ho Ho Ho Ho Ho Ho Ho Ho
 Flo-685 Pa. Npa-Na. o- lo E- NA