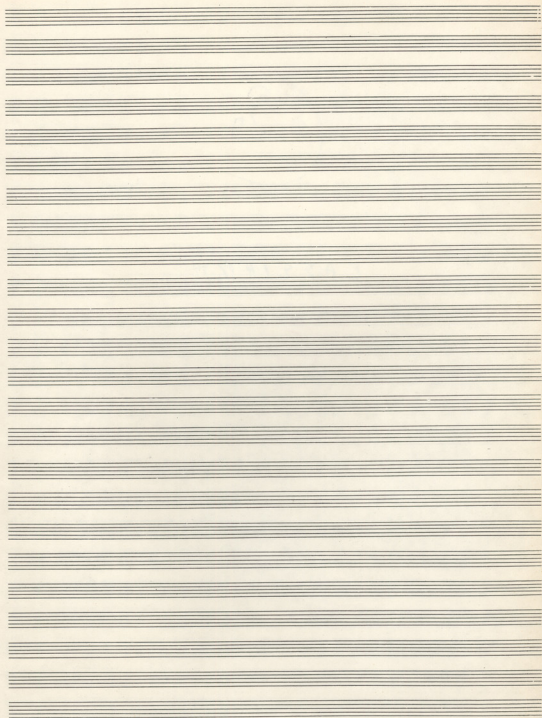


29

ΚΑΣΣΙΑΝΗ

51



1

Handwritten musical notation for the first system, featuring a grand staff with treble and bass clefs and various notes and accidentals.

Handwritten musical notation for the second system, including a grand staff and a bass line with arrows indicating melodic movement.

Min. Sudo re sil Min² do ut Min² - RB *And^{te}*

Handwritten musical notation for the third system, including a grand staff with lyrics and musical notes.

Solo

Tutti

Handwritten musical score for the first system, consisting of four staves. The notation includes various notes, rests, and bar lines, with some notes beamed together.

Handwritten musical score for the second system, consisting of four staves. The notation includes notes, rests, and bar lines, with some notes beamed together.

Handwritten musical score for the third system, consisting of four staves. The notation includes notes, rests, and bar lines, with some notes beamed together. The word "Suo" is written above the first staff.

Handwritten musical notation, first system. It consists of four staves. The first staff is a treble clef with a key signature of one flat (B-flat). The second and third staves are bass clefs. The fourth staff is a bass clef with a 'C' time signature. The notation includes various notes, rests, and accidentals (sharps and flats).

Handwritten musical notation, second system. It consists of four staves. The first staff is a treble clef with a key signature of one flat. The second and third staves are bass clefs. The fourth staff is a bass clef with a 'C' time signature. The notation includes various notes, rests, and accidentals.

Handwritten musical notation, third system. It consists of four staves. The first staff is a treble clef with a key signature of one flat. The second and third staves are bass clefs. The fourth staff is a bass clef with a 'C' time signature. The notation includes various notes, rests, and accidentals.

2 *Solo* *la mi Fa ce la MI*

Handwritten musical score for the first system, consisting of four staves. The first staff is a treble clef with a common time signature. The second and third staves are bass clefs. The fourth staff is a tenor clef. The music is written in a simple, rhythmic style with notes and rests. The word "Solo" is written above the second staff.

Handwritten musical score for the second system, consisting of four staves. The first staff is a treble clef with a common time signature. The second and third staves are bass clefs. The fourth staff is a tenor clef. The music continues with notes and rests. The word "Solo" is written above the first staff.

Handwritten musical score for the third system, consisting of four staves. The first staff is a treble clef with a common time signature. The second and third staves are bass clefs. The fourth staff is a tenor clef. The music continues with notes and rests. The word "Tutti" is written above the first staff.

Handwritten musical notation for two staves. The top staff is in treble clef and contains a melodic line with various note values and rests. The bottom staff is in bass clef and contains a bass line with similar note values and rests. The notation is written in ink on aged paper.

Handwritten musical notation for four staves. The top staff is in bass clef and contains a bass line. The three staves below it are in treble clef and contain a piano accompaniment. The notation includes various note values, rests, and dynamic markings such as *mf* and *f*.

Handwritten musical notation for four staves. The top staff is in bass clef and contains a bass line. The three staves below it are in treble clef and contain a piano accompaniment. The notation includes various note values, rests, and dynamic markings such as *f* and *sm*. There are also some handwritten annotations in the right margin.

Handwritten musical score for the first system, consisting of five staves. The top staff is a treble clef with a 3/4 time signature. The second staff is a bass clef. The third staff is a bass clef. The fourth staff is a bass clef. The fifth staff is a bass clef. The music includes various notes, rests, and accidentals.

Sono al des do Ro cant' et do

Handwritten musical score for the second system, consisting of five staves. The first staff contains the lyrics "Sono al des do Ro cant' et do" written above the notes. The second staff is a bass clef. The third staff is a bass clef. The fourth staff is a bass clef. The fifth staff is a bass clef. The music includes various notes, rests, and accidentals.

et hat / hat Mio Son TUTTI

Handwritten musical score for the third system, consisting of five staves. The first staff contains the lyrics "et hat / hat Mio Son TUTTI" written above the notes. The second staff is a bass clef. The third staff is a bass clef. The fourth staff is a bass clef. The fifth staff is a bass clef. The music includes various notes, rests, and accidentals.

Handwritten musical score, first system. It consists of four staves. The top staff is a vocal line with lyrics: "Ma - re an - te Ma - ri - am - Sa - lu - ta - re". The second staff is a bass line, the third is a tenor line, and the fourth is a bass line. The music is written in a simple, handwritten style with various note values and rests.

Handwritten musical score, second system. It consists of four staves. The top staff is a vocal line with lyrics: "na - ... er - ... sta ... an - ... er ...". The second staff is a bass line, the third is a tenor line, and the fourth is a bass line. The music continues with similar notation to the first system.

Handwritten musical score, third system. It consists of four staves. The top staff is a vocal line with lyrics: "na - ... a ... a ... a ...". The second staff is a bass line, the third is a tenor line, and the fourth is a bass line. The music concludes with various note values and rests.

3

Handwritten musical notation on a four-staff system. The notation includes notes, rests, and bar lines. Above the first staff, there are handwritten annotations: "Xuu t. Xuu" above the first measure, "t - Xuuor" above the second measure, and "t - t o G..." above the third measure. The first staff is in treble clef, and the other three are in bass clef. The music is divided into three measures by vertical bar lines.

Handwritten musical notation on a four-staff system. The notation includes notes, rests, and bar lines. Above the first staff, there are handwritten annotations: "Xuu t" above the first measure, "G" above the second measure, "X" above the third measure, and "o" above the fourth measure. The first staff is in treble clef, and the other three are in bass clef. The music is divided into four measures by vertical bar lines.







① ② RE — MI LA

③ ④ My la la my ⑤ RO PAH

⑥ RE — LA RE MY ⑦ ha ha ha ha RE LA

① RE MI RE LA MY ha MI RE LA
 A — my — ha ha ha ha
 RE ha si LA ha ha ha ha
 A — my —

LA ha ha ha RE MY
 ha ha ha ha ha ha







Soprano: *una*
 Alto: *una*
 Tenor: *una*
 Bass: *una*

Kw. - ei E Kw. ei E Kw. ei E Kw.
 Kw. ei E Kw. ei E Kw. ei E Kw.
 Kw. ei E Kw. ei E Kw. ei E Kw.
 Kw. ei E Kw. ei E Kw. ei E Kw.

pi E - - - - H - sv H - sv nad - tas - - - - ac fac ri - ay
 pi E - - - - H - sv H - sv nad - tas - - - - H - ac fac ri - ay
 pi E - - - - H - sv H - sv nad - tas - - - - ac fac ri - ay
 pi E - - - - H - sv H - sv nad - tas - - - - ac fac ri - ay

na - ei na na - ju - ni Tu - Tu
 na - ei na na - ju - ni Tu - Tu
 na - ei na na - ju - ni Tu - Tu
 na - ei na na - ju - ni Tu - Tu

Sop

du all' die H'n G't o. du Tu

Alto

Thu - Sei aus G'te H'n G't o. du Tu

Tenor

Thu Sei all' die H'n G't o. du Tu

Bass

Thu - Sei aus G'te H'n G't o. du Tu

S

W. po po po. a. va ja Bar. or

A

W. po po po. a. va ja Bar. or

T

W. po po po. a. va ja Bar. or

B

W. po po po. a. va ja Bar. or

unis

Ta - 3 for Mu. pa pa. pre-a. va ha. Ber au - tu

Ta - 3 for Mu. pa pa. - - for a. va ja Ber au - tu -

Ta - 3 for Mu. pa pa - pre-a. va ja Ber au - tu -

Ta - for Mu. pa pa - for a. va ja Ber au - tu -

au - tu -

Ta - - tu - (c) for a - - - va ja

Ta - - tu - - for tu - for a - - - va.

Ta - - - a va - ja

Ta - . tu. for tu - for a. va ja

Ta - for ta - for a. va ja

Solo

a ta - for

o Su pa tr m

Solo

tu - ta - for

o - Su - pa

Solo

tu Bro

o - Su - pa H

Solo

Bro su ta - for

o - Su - pa

Tutti

del

Mu - pa - so -

so - ppò

Tutti

uno

Mu - pa - so -

ppò

Tutti

uno

Mu - pa - so -

so - ppò

Tutti

Su - pa tr m

Mu - pa - so - ppò

Soprano (S): *tu su tu fi a epus ka. - - - - - fi - - - - -*

Alto (A): *tu su tu fi a epus ka. - - - - - fi - - - - -*

Tenore (T): *tu su tu fi a epus ka. - - - - - fi - - - - -*

Basso (B): *tu su tu epus ka. - - - - - fi - - - - -*

Handwritten musical score for a four-part setting. The lyrics are: *Or. pa-ti-ae Je-su-christi filii Dei qui de cae-lis descendit et seipsum pro nobis immolavit ut nos ad seipsum converteret et nos in seipsum unice-generatum filium adoptaret. Amen.*

