

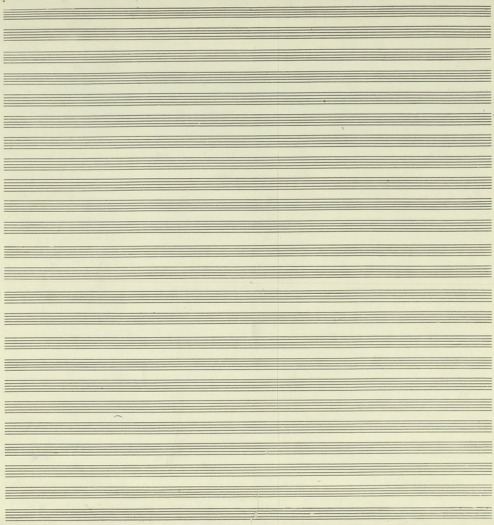
LA RE MI LA RE LA G

LA RE MI LA

EMILIANA
Piano 55

Tempo

ff f



Handwritten musical score for the Epiphany (EPIFANIA) section, page 56. The score is written on ten systems of five-line staves, with lyrics in Italian written below the notes. The music is in G major and 3/4 time. The lyrics are:

1. *Ma a a fi - so a a a fi - so*
 2. *Ma a a a fi - so a a a fi - so*
 3. *Ma a a a fi - so a a a fi - so*
 4. *Ma a a a fi - so a a a fi - so*
 5. *Ma a a a fi - so a a a fi - so*
 6. *Ma a a a fi - so a a a fi - so*
 7. *Ma a a a fi - so a a a fi - so*
 8. *Ma a a a fi - so a a a fi - so*
 9. *Ma a a a fi - so a a a fi - so*
 10. *Ma a a a fi - so a a a fi - so*

The score includes various musical notations such as clefs (treble and alto), time signatures (3/4), and dynamic markings. There are also some handwritten annotations and corrections in the margins.

Handwritten musical notation on a single staff with lyrics below:

to papapap me - pa - papap pap papap pap me hi papap pa papap me me der me ai Xapi de -

Handwritten musical notation on a single staff with lyrics below:

pariam to papap ca - p - - ge bla ma ka pa bla ge us ma i - - an me vor - ps bei ka -

Handwritten musical notation on a single staff with lyrics below:

to valapap pap me dasu ki pap ka - ki ca me - - me o - - me ca - me bla bla ge -

Handwritten musical notation on a single staff with lyrics below:

pe ma bla ge me pa me valapap de - - ca papap pap de - - ps - - pa - - pa - - pa - -

For me (for 241 pedal (strong + unclap) for 11 strokes 13 unclap) AD LIPIUM

ppp
1-111-6

35

Handwritten musical notation on a single staff with lyrics below:

Pa - - - - - pa - - - - - pa - - - - - pa - - - - - pa - - - - -

Handwritten musical notation on a single staff with lyrics below:

Pa - - - - - pa - - - - -

Five empty musical staves for notation.

MEGA SY DAAZAND IOMNES

Out

Handwritten musical notation on a five-line staff with a treble clef and a key signature of one sharp (F#). The melody consists of eighth and sixteenth notes. Below the staff, the lyrics are written in a stylized script: "Me so as Safer as am jia i me xpa fidi i me se jia ei nae pa si ya".

Handwritten musical notation on a five-line staff with a treble clef. The melody continues with eighth and sixteenth notes. Below the staff, the lyrics are: "me xpa pa i nae pa de na a b - fa sa pa na tu ka xi jia pa pa vau pa na". Above the staff, there are markings "ru" and "tau" with lines pointing to specific notes.

Handwritten musical notation on a five-line staff with a treble clef. The melody continues with eighth and sixteenth notes. Below the staff, the lyrics are: "sa na fa pa a b se as Safer as am jia. All ei i fi xpa a". Above the staff, there are markings "ru" and "Ave" with lines pointing to specific notes.

Handwritten musical notation on a five-line staff with a treble clef. The melody continues with eighth and sixteenth notes. Below the staff, the lyrics are: "ka ta fa pa a b fi xpa a pa pa a pa a ka a a". Below the lyrics, the word "RE" is written under the first 'a'.

Handwritten musical notation on a five-line staff with a treble clef. The melody continues with eighth and sixteenth notes. Below the staff, the lyrics are: "pa a - ti - a pa pa - ei fa". Below the lyrics, the words "RE DO LA RE DO RE LA RE LA SI" are written, with "RE" under the first 'a' and "SI" under the final 'i'.

A series of ten empty five-line musical staves, intended for further notation or practice.

ΕΠΙΦΑΝΙΑ

ΓΙΩΡΓΗΣ Γ. ΣΕΦΕΡΗΣ
ΝΩΣΤΙΚΗ Ν. ΖΕΣΣΕΡΑΚΗ

ΑΡΧΗΝ (SI)

Ἐν ὄψῃ τοῦ
 ἡλίου ἔλαμψε
 ἡ ἀστὴρ ὡς
 ἄστρον ἄστρον
 ἡλίου ἔλαμψε
 ἡ ἀστὴρ ὡς
 ἄστρον ἄστρον

ΚΡΑΤΗΣΑ ΤΗ ΖΩΗ ΣΟΥ

Κρατῆσα τὴ ζωὴ σου
 Κρατῆσα τὴ ζωὴ σου
 Κρατῆσα τὴ ζωὴ σου
 Κρατῆσα τὴ ζωὴ σου

ΑΝΘΩΤΗΣ ΟΕΙΡΙΑΣ

Ἀνθώτης οὐρανῶν
 Ἀνθώτης οὐρανῶν
 Ἀνθώτης οὐρανῶν
 Ἀνθώτης οὐρανῶν

Ἐν ὄψῃ τοῦ
 ἡλίου ἔλαμψε
 ἡ ἀστὴρ ὡς
 ἄστρον ἄστρον

Οὐρανῶν
 ἡ ἀστὴρ ὡς
 ἄστρον ἄστρον
 (1960)
 ἀστρον ἄστρον!

Royal Greek Embassy
 51, Upper Brook street
 London W.1.

Il Notista Passatum

PARIS
1960

