

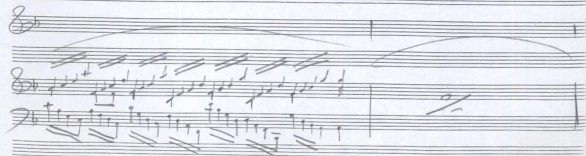
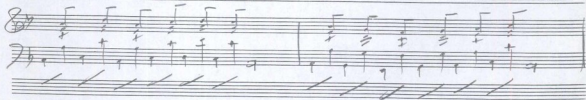
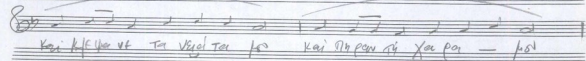
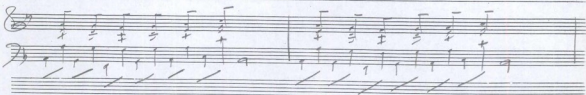
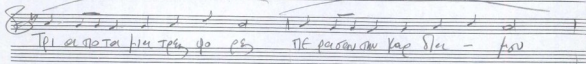
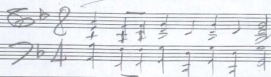
ΑΡΚΑΔΙΑ II

1. ΤΡΑ ΠΟΤΑΜΙΑ
2. Ο ΧΡΗΣΜΟΣ
3. Η ΕΠΙΚΗΡΥΞΗ
4. ΣΤΟ ΠΑΖΑΡΙ ΤΟΥ ΦΟΝΙΑ
5. INTERMEZZO
6. ΗΘΑΝ ΟΙ ΑΝΘΡΩΠΟΙ
ΜΕΤΑ ΜΑΥΡΑ
7. Ο ΑΝΘΡΩΠΟΣ ΓΕΝΝΗΣΕ ΤΗ ΜΥΤΑ
8. Ο ΛΟΓΟΣ Ο ΣΤΕΡΕΥΣ
9. Η ΠΗΛΑ ΤΗΣ ΑΡΩΜΑΣ ΤΟΥ ΗΣΗ
10. ΑΥΤΟΙ ΟΙ ΣΑΡΩΝ

ΑΡΚΑΔΙΑ II

Μην, Γεωργίου

1. ΤΡΙΑ ΠΟΤΑΜΙΑ



Toi va go tai hiä tau do do kau kumpu ppi e he - vo
 Toi va go tai hiä tau do do kau kumpu ppi e he - vo

to tpi n e spe ve kau kang kau Saurpu kumpi spe - vo
 to tpi n e spe ve kau kang kau Saurpu kumpi spe - vo

Capo 6 6 6 6 6 6 6 6

Capo 6 6 6 6 6 6 6 6

Handwritten musical score for the first system. It consists of three staves: a vocal line in G-clef and two piano accompaniment staves in F-clef. The music is in 2/4 time and features a melody with lyrics. The lyrics are: "The father who was first and the Son who was with him".

The first system contains the following lyrics: "The father who was first and the Son who was with him".

Handwritten musical score for the second system. It consists of three staves: a vocal line in G-clef and two piano accompaniment staves in F-clef. The music continues from the first system. The lyrics are: "and together with him were all things made".

The second system contains the following lyrics: "and together with him were all things made".

Handwritten musical score for the third system. It consists of three staves: a vocal line in G-clef and two piano accompaniment staves in F-clef. The music continues from the second system. The lyrics are: "and all things were made by him".

The third system contains the following lyrics: "and all things were made by him".

Handwritten musical score for the fourth system. It consists of three staves: a vocal line in G-clef and two piano accompaniment staves in F-clef. The music continues from the third system. The lyrics are: "and without beginning".

The fourth system contains the following lyrics: "and without beginning".

Handwritten musical score for the first system. It consists of three staves: a vocal line in G major (one sharp) and a piano accompaniment in 2/4 time. The lyrics are written below the vocal line. The piano part features a rhythmic pattern of eighth notes in the right hand and quarter notes in the left hand.

Tis the first of our first four days to you - first

Handwritten musical score for the second system, continuing the vocal and piano parts from the first system. The lyrics are written below the vocal line. The piano accompaniment continues with the same rhythmic pattern.

To the first of our first four days to you - first

A single empty musical staff with a treble clef and a key signature of one sharp (F#).

Handwritten musical score for the third system. It shows a piano accompaniment with a treble clef and a key signature of one sharp. The system concludes with a final chord and a double bar line.

Handwritten musical notation for the first system. The vocal line is in G major and 4/4 time. The lyrics are written below the notes.

Lyrics:
 pos pu tpu st k'le yi vr Kan- h'as
 H kau kau- ka vs dan va to to
 sp'as H'as Jee ju en se'd d'ara J'as H'

Handwritten musical notation for the second system, featuring a piano accompaniment with chords and rhythmic patterns.

Handwritten musical notation for the third system. The vocal line is in G major and 4/4 time. The lyrics are written below the notes.

Lyrics:
 K'aw Ju se kau = to kau = = ei
 Sa = kpu to = oi ka = = oou
 Se = kau of = ei st = = pia H'

Handwritten musical notation for the fourth system, featuring a piano accompaniment with chords and rhythmic patterns.

Handwritten musical notation for the fifth system. The vocal line is in G major and 4/4 time. The lyrics are written below the notes.

Lyrics:
 K'aw Ju se kau = to kau = = ei
 Sa = kpu to = oi ka = = oou
 Se = kau of = ei st = = pia H'

Handwritten musical notation for the sixth system, featuring a piano accompaniment with chords and rhythmic patterns.

7

8+

8+

8+

8+

8+

8+

8+

8+

8+

8+

8+

E. W. King
 5. 1. 02
 A. W. King
 X. W. King!

3. Η ΕΠΙΚΗΡΥΞΗ

8 $\text{♩} = 80$

8 ♩ 4

Σὺς ἔχθ' ἡμῶν καὶ τὰ σὺν ἡμῶν

8 ♩ 4

ἡμῶν σὺν σοὶ ἕκαστος καὶ τὸ ἐν ἡμῶν

8 ♩ 4

καὶ ἡ ἐπι- κη- ρύ- ξη σου πο- νη- ρία

8 ♩ 4

ἔ- κεινὴ σου· ἄν- θ' αὖτε πάλιν

-9

Handwritten musical score for the first system. The top staff is a vocal line with lyrics: "kau kau kau kau kau kau kau kau". The bottom staff is a piano accompaniment consisting of chords and rhythmic patterns.

1-258

Handwritten musical score for the second system. The vocal line continues with notes and rests. The piano accompaniment features a series of chords and rhythmic figures.

Handwritten musical score for the third system. The vocal line has a melodic line with some slurs. The piano accompaniment continues with similar chordal structures.

Handwritten musical score for the fourth system. The piano accompaniment becomes more intricate with some sixteenth-note patterns. The vocal line remains simple.

Handwritten musical score for the fifth system. The piece concludes with a final vocal note and piano accompaniment.

Four empty musical staves at the bottom of the page, indicating the end of the written score on this page.

Handwritten musical notation for the first system. It consists of a vocal line on a single staff and a piano accompaniment on two staves. The piano part features chords and arpeggiated figures. The notation is in a key with two flats and a common time signature.

I vana

Handwritten musical notation for the second system. It includes the vocal line and piano accompaniment. The tempo marking $\text{♩} = 80$ is present below the piano part.

zau sp' kar kai ogy a. jo es

Handwritten musical notation for the third system. It includes the vocal line and piano accompaniment. The piano part features chords with horizontal lines above them, possibly indicating a specific voicing or articulation.

pa va To- vo pa - va

Handwritten musical notation for the fourth system. It includes the vocal line and piano accompaniment. The piano part features chords with horizontal lines above them.

o pa va pu eia kai xa es

Handwritten musical notation for the fifth system. It includes the vocal line and piano accompaniment. The piano part features chords with horizontal lines above them.

Handwritten musical notation for the first system. It features a vocal line with lyrics and a piano accompaniment. The lyrics are: "αντ' ἰ-να ποὺ ε-φτα-πο ε-ε".

Handwritten musical notation for the second system. It features a vocal line with lyrics and a piano accompaniment. The lyrics are: "ποὺ ἀπαρτῆς οὐ κερ-δα-πο".

Handwritten musical notation for the third system, starting with a double bar line and a new key signature of one sharp (F#). It features a vocal line and a piano accompaniment.

Handwritten musical notation for the fourth system, continuing the piece in the key of one sharp. It features a vocal line and a piano accompaniment.

Handwritten musical notation for the fifth system, continuing the piece in the key of one sharp. It features a vocal line and a piano accompaniment.

TO TO SOU KIN AY FI - FO

4. ΣΤΟ ΠΑΖΑΡΙ ΤΩ ΦΟΝΙΑ

9/8
♩ = 58
P

Α Π ΤΩ Π Α Σ ΤΟ Π Ο Σ ΤΟ Π Ο Σ ΤΑ Σ Ο Κ Ε Ρ Α Ε Π Α

Κ Η - Β Ε Ρ Α Ν Π Ε Ρ Α Ν Κ Η Σ Ο Σ Α Γ Η Ρ Η Α -

Handwritten musical score for the first system. The top staff is a vocal line in G major with lyrics: "TO TO SOU KIN AY FI - FO". The bottom staff is a piano accompaniment in 2/4 time, featuring a rhythmic pattern of eighth and sixteenth notes.

4. ΣΤΟ ΠΑΖΑΡΙ ΤΩ ΦΟΝΙΑ

Handwritten musical score for the second system. It begins with a 9/8 time signature and a tempo marking of $\text{♩} = 58$. The top staff is a vocal line with lyrics: "ΣΤΟ ΠΑΖΑΡΙ". The bottom staff is a piano accompaniment in 9/8 time, featuring a rhythmic pattern of eighth and sixteenth notes.

Handwritten musical score for the third system. The top staff is a vocal line with lyrics: "ΠΑΖΑΡΙ ΤΩ ΠΑΖΑΡΙ ΣΤΟ ΠΑΖΑΡΙ ΤΩ ΠΑΖΑΡΙ". The bottom staff is a piano accompaniment in 9/8 time, featuring a rhythmic pattern of eighth and sixteenth notes.

Handwritten musical score for the fourth system. It begins with a 12/8 time signature. The top staff is a vocal line with lyrics: "ΚΙ Η ΣΠΕΡΑΝ ΠΕΡΑΝ ΚΙ Η ΣΟΥ Α ΓΑΡ ΟΥ Α". The bottom staff is a piano accompaniment in 12/8 time, featuring a rhythmic pattern of eighth and sixteenth notes.

14

FF

(Loud)

Handwritten musical score for the first system. It consists of three staves. The top staff has a treble clef and contains several notes with stems, some marked with accents (>). The middle staff has a bass clef and contains notes with stems and rests. The bottom staff has a bass clef and contains rhythmic notation represented by vertical lines with stems. Dynamic markings include 'ff' (fortissimo) and 'p' (piano). There are also some handwritten annotations like 'ff' and 'p' above the staves.

Handwritten musical score for the second system. It consists of three staves. The top staff has a treble clef and contains notes with stems and rests. The middle staff has a bass clef and contains notes with stems and rests. The bottom staff has a bass clef and contains rhythmic notation represented by vertical lines with stems. Dynamic markings include 'ff' (fortissimo) and 'p' (piano). There are also some handwritten annotations like 'ff' and 'p' above the staves.

(Loud)

Handwritten musical score for the third system. It consists of three staves. The top staff has a treble clef and contains notes with stems and rests. The middle staff has a bass clef and contains notes with stems and rests. The bottom staff has a bass clef and contains rhythmic notation represented by vertical lines with stems. Dynamic markings include 'p' (piano) and 'ff' (fortissimo). There are also some handwritten annotations like 'p' and 'ff' above the staves.

Handwritten musical score for the fourth system. It consists of three staves. The top staff has a treble clef and contains notes with stems and rests. The middle staff has a bass clef and contains notes with stems and rests. The bottom staff has a bass clef and contains rhythmic notation represented by vertical lines with stems. Dynamic markings include 'p' (piano) and 'ff' (fortissimo). There are also some handwritten annotations like 'p' and 'ff' above the staves.

p

Su-nya fa cu-ru pa-rah ba-rah

mf *f*

pa-rah su-nya fa cu-ru pa-rah ba-rah

mf *f*

pa-rah su-nya fa cu-ru pa-rah ba-rah

ff *p*

pa-rah su-nya fa cu-ru pa-rah ba-rah

ff *3P* *9* *ff*

Handwritten musical score for the first system. It features a treble clef, a key signature of two flats (B-flat and E-flat), and a 4/4 time signature. The music includes a melody with slurs and a bass line with rhythmic patterns. Dynamics include 'ff' and 'p'.

(L. 2)

Handwritten musical score for the second system. It includes a treble clef, a key signature of two flats, and a 4/4 time signature. The music includes a melody and a bass line with rhythmic patterns. Dynamics include 'p' and 'f'.

Handwritten musical score for the third system. It includes a treble clef, a key signature of two flats, and a 4/4 time signature. The music includes a melody and a bass line with rhythmic patterns. Dynamics include 'p'.

Handwritten musical score for the fourth system. It includes a treble clef, a key signature of two flats, and a 4/4 time signature. The music includes a melody and a bass line with rhythmic patterns. Dynamics include 'p'.

-1F

Handwritten musical score for the first system. It consists of four staves. The top staff is a vocal line with lyrics: "A je m'au-rais pas de pain". The second staff is a piano accompaniment. The third and fourth staves are for a cello and double bass. The key signature has two flats (B-flat and E-flat), and the time signature is 9/8. The music features a mix of quarter and eighth notes with rests.

Handwritten musical score for the second system. It consists of four staves. The top staff is a vocal line with lyrics: "A je m'au-rais pas de pain". The second staff is a piano accompaniment. The third and fourth staves are for a cello and double bass. The key signature has two flats, and the time signature is 9/8. The music continues with similar rhythmic patterns.

Handwritten musical score for the third system. It consists of four staves. The top staff is a vocal line with lyrics: "A je m'au-rais pas de pain". The second staff is a piano accompaniment. The third and fourth staves are for a cello and double bass. The key signature has two flats, and the time signature is 9/8. The music includes some dynamic markings like *p* and *f*.

Handwritten musical score for the fourth system. It consists of four staves. The top staff is a vocal line with lyrics: "A je m'au-rais pas de pain". The second staff is a piano accompaniment. The third and fourth staves are for a cello and double bass. The key signature has two flats, and the time signature is 9/8. The music concludes with a final chord and a double bar line.

(12/4)

Handwritten musical notation for the first system, including a treble clef, a 12/4 time signature, and a piano (*p*) dynamic marking. The notation includes a vocal line with a slur and a piano accompaniment line with chords and rhythmic markings.

Handwritten musical notation for the second system, featuring a piano (*p*) dynamic marking and the lyrics "Zwei Ma für vier b ja ja". The notation includes a vocal line with a slur and a piano accompaniment line with chords and rhythmic markings.

Handwritten musical notation for the third system, featuring a piano (*p*) dynamic marking and the lyrics "Jan-ken ja vier b Xa ca für kin". The notation includes a vocal line with a slur and a piano accompaniment line with chords and rhythmic markings.

Handwritten musical notation for the fourth system, featuring a piano (*p*) dynamic marking and the lyrics "F für an par daga ca für". The notation includes a vocal line with a slur and a piano accompaniment line with chords and rhythmic markings.

Part A-B no 19

Handwritten musical score for Part A-B no 19. It features three staves: a vocal line and two piano accompaniment staves. The music is in 4/4 time. The vocal line includes lyrics: "Kai q... p...". The piano accompaniment includes dynamic markings such as *ff* and *p*. There are some handwritten annotations and a large 'X' drawn over the first few measures.

Handwritten musical score for Part A-B no 19, continuing from the previous section. It features three staves: a vocal line and two piano accompaniment staves. The music is in 4/4 time. The vocal line includes lyrics: "Ta...". The piano accompaniment includes dynamic markings such as *ff* and *p*.

Handwritten musical score for Part A-B no 19, continuing from the previous section. It features three staves: a vocal line and two piano accompaniment staves. The music is in 4/4 time. The vocal line includes lyrics: "Rall 1/2". The piano accompaniment includes dynamic markings such as *p*. The section ends with the word "FINE" written in the upper right corner.

Handwritten musical score for Part A-B no 19, continuing from the previous section. It features three staves: a vocal line and two piano accompaniment staves. The music is in 4/4 time. The vocal line includes lyrics: "A B". The piano accompaniment includes dynamic markings such as *f*. There are some handwritten annotations and a large 'X' drawn over the first few measures.

5. INTERMEZZO

♩ = 56

8-9 3:

7 8P

- 21

leggi

dim

1. volta

9.1.02
 O PAMPHILE
 ad. 1. 2. 3.
 1. 2. 3. 4.
 5. 6. 7. 8. 9. 10. 11. 12. 13. 14. 15. 16. 17. 18. 19. 20. 21. 22. 23. 24. 25. 26. 27. 28. 29. 30. 31. 32. 33. 34. 35. 36. 37. 38. 39. 40. 41. 42. 43. 44. 45. 46. 47. 48. 49. 50. 51. 52. 53. 54. 55. 56. 57. 58. 59. 60. 61. 62. 63. 64. 65. 66. 67. 68. 69. 70. 71. 72. 73. 74. 75. 76. 77. 78. 79. 80. 81. 82. 83. 84. 85. 86. 87. 88. 89. 90. 91. 92. 93. 94. 95. 96. 97. 98. 99. 100. 101. 102. 103. 104. 105. 106. 107. 108. 109. 110. 111. 112. 113. 114. 115. 116. 117. 118. 119. 120. 121. 122. 123. 124. 125. 126. 127. 128. 129. 130. 131. 132. 133. 134. 135. 136. 137. 138. 139. 140. 141. 142. 143. 144. 145. 146. 147. 148. 149. 150. 151. 152. 153. 154. 155. 156. 157. 158. 159. 160. 161. 162. 163. 164. 165. 166. 167. 168. 169. 170. 171. 172. 173. 174. 175. 176. 177. 178. 179. 180. 181. 182. 183. 184. 185. 186. 187. 188. 189. 190. 191. 192. 193. 194. 195. 196. 197. 198. 199. 200. 201. 202. 203. 204. 205. 206. 207. 208. 209. 210. 211. 212. 213. 214. 215. 216. 217. 218. 219. 220. 221. 222. 223. 224. 225. 226. 227. 228. 229. 230. 231. 232. 233. 234. 235. 236. 237. 238. 239. 240. 241. 242. 243. 244. 245. 246. 247. 248. 249. 250. 251. 252. 253. 254. 255. 256. 257. 258. 259. 260. 261. 262. 263. 264. 265. 266. 267. 268. 269. 270. 271. 272. 273. 274. 275. 276. 277. 278. 279. 280. 281. 282. 283. 284. 285. 286. 287. 288. 289. 290. 291. 292. 293. 294. 295. 296. 297. 298. 299. 300. 301. 302. 303. 304. 305. 306. 307. 308. 309. 310. 311. 312. 313. 314. 315. 316. 317. 318. 319. 320. 321. 322. 323. 324. 325. 326. 327. 328. 329. 330. 331. 332. 333. 334. 335. 336. 337. 338. 339. 340. 341. 342. 343. 344. 345. 346. 347. 348. 349. 350. 351. 352. 353. 354. 355. 356. 357. 358. 359. 360. 361. 362. 363. 364. 365. 366. 367. 368. 369. 370. 371. 372. 373. 374. 375. 376. 377. 378. 379. 380. 381. 382. 383. 384. 385. 386. 387. 388. 389. 390. 391. 392. 393. 394. 395. 396. 397. 398. 399. 400. 401. 402. 403. 404. 405. 406. 407. 408. 409. 410. 411. 412. 413. 414. 415. 416. 417. 418. 419. 420. 421. 422. 423. 424. 425. 426. 427. 428. 429. 430. 431. 432. 433. 434. 435. 436. 437. 438. 439. 440. 441. 442. 443. 444. 445. 446. 447. 448. 449. 450. 451. 452. 453. 454. 455. 456. 457. 458. 459. 460. 461. 462. 463. 464. 465. 466. 467. 468. 469. 470. 471. 472. 473. 474. 475. 476. 477. 478. 479. 480. 481. 482. 483. 484. 485. 486. 487. 488. 489. 490. 491. 492. 493. 494. 495. 496. 497. 498. 499. 500. 501. 502. 503. 504. 505. 506. 507. 508. 509. 510. 511. 512. 513. 514. 515. 516. 517. 518. 519. 520. 521. 522. 523. 524. 525. 526. 527. 528. 529. 530. 531. 532. 533. 534. 535. 536. 537. 538. 539. 540. 541. 542. 543. 544. 545. 546. 547. 548. 549. 550. 551. 552. 553. 554. 555. 556. 557. 558. 559. 560. 561. 562. 563. 564. 565. 566. 567. 568. 569. 570. 571. 572. 573. 574. 575. 576. 577. 578. 579. 580. 581. 582. 583. 584. 585. 586. 587. 588. 589. 590. 591. 592. 593. 594. 595. 596. 597. 598. 599. 600. 601. 602. 603. 604. 605. 606. 607. 608. 609. 610. 611. 612. 613. 614. 615. 616. 617. 618. 619. 620. 621. 622. 623. 624. 625. 626. 627. 628. 629. 630. 631. 632. 633. 634. 635. 636. 637. 638. 639. 640. 641. 642. 643. 644. 645. 646. 647. 648. 649. 650. 651. 652. 653. 654. 655. 656. 657. 658. 659. 660. 661. 662. 663. 664. 665. 666. 667. 668. 669. 670. 671. 672. 673. 674. 675. 676. 677. 678. 679. 680. 681. 682. 683. 684. 685. 686. 687. 688. 689. 690. 691. 692. 693. 694. 695. 696. 697. 698. 699. 700. 701. 702. 703. 704. 705. 706. 707. 708. 709. 710. 711. 712. 713. 714. 715. 716. 717. 718. 719. 720. 721. 722. 723. 724. 725. 726. 727. 728. 729. 730. 731. 732. 733. 734. 735. 736. 737. 738. 739. 740. 741. 742. 743. 744. 745. 746. 747. 748. 749. 750. 751. 752. 753. 754. 755. 756. 757. 758. 759. 760. 761. 762. 763. 764. 765. 766. 767. 768. 769. 770. 771. 772. 773. 774. 775. 776. 777. 778. 779. 780. 781. 782. 783. 784. 785. 786. 787. 788. 789. 790. 791. 792. 793. 794. 795. 796. 797. 798. 799. 800. 801. 802. 803. 804. 805. 806. 807. 808. 809. 810. 811. 812. 813. 814. 815. 816. 817. 818. 819. 820. 821. 822. 823. 824. 825. 826. 827. 828. 829. 830. 831. 832. 833. 834. 835. 836. 837. 838. 839. 840. 841. 842. 843. 844. 845. 846. 847. 848. 849. 850. 851. 852. 853. 854. 855. 856. 857. 858. 859. 860. 861. 862. 863. 864. 865. 866. 867. 868. 869. 870. 871. 872. 873. 874. 875. 876. 877. 878. 879. 880. 881. 882. 883. 884. 885. 886. 887. 888. 889. 890. 891. 892. 893. 894. 895. 896. 897. 898. 899. 900. 901. 902. 903. 904. 905. 906. 907. 908. 909. 910. 911. 912. 913. 914. 915. 916. 917. 918. 919. 920. 921. 922. 923. 924. 925. 926. 927. 928. 929. 930. 931. 932. 933. 934. 935. 936. 937. 938. 939. 940. 941. 942. 943. 944. 945. 946. 947. 948. 949. 950. 951. 952. 953. 954. 955. 956. 957. 958. 959. 960. 961. 962. 963. 964. 965. 966. 967. 968. 969. 970. 971. 972. 973. 974. 975. 976. 977. 978. 979. 980. 981. 982. 983. 984. 985. 986. 987. 988. 989. 990. 991. 992. 993. 994. 995. 996. 997. 998. 999. 1000.

G. HPOAN OI ANOPIANOI ME TA NANTA

1-2-3-4

Fermata

4 5 F*

Fermata

7 8 9

10 11 12

* Son...
 TA PEPRA 11 (HO LEVARE) } 15 parisi kai muros

23

Handwritten musical score for measures 13-15. The score includes a vocal line with lyrics and a piano accompaniment. Measure numbers 13, 14, and 15 are circled. The lyrics are: "Kie pi vi u si kpa kex de va c". There is a handwritten note "Alm" above the end of the system with an arrow pointing to the piano accompaniment.

Handwritten musical score for measures 16-18. The score includes a vocal line with lyrics and a piano accompaniment. Measure numbers 16, 17, and 18 are circled. The lyrics are: "He sava an sa sa voi hi ta pa pa pa".

Handwritten musical score for measures 19-21. The score includes a vocal line with lyrics and a piano accompaniment. Measure numbers 19, 20, and 21 are circled. The lyrics are: "na ve xan sa sa ta se sa pa pa pa pa tang kien".

Handwritten musical score for measures 22-24. The score includes a vocal line with lyrics and a piano accompaniment. Measure numbers 22, 23, and 24 are circled. The lyrics are: "ta sa xan sa sa pa pa pa pa pa".

24

25 (26) 27

Kan ke few vo soo ku tang

28 (29)

pa - - - - - tang

II VOLTA *

Kan na few tang vo pa tang Na few Kan tang pa ju sin pa kan

II VOLTA

5 6 7 8 9

10 11 12 13

vo kan sin pa tang pa tang pa tang pa tang pa tang

10 11 12 13

* Con Fine sempre in fine Canto per Piano
 in fine 14 (per Canto) & no 15
 Canto per Piano

Handwritten musical notation for measures 14-17. The top staff shows a melody with lyrics: "Ka An ka de vir" and "Kax kon san Sen tra kon so". The bottom staff shows chord diagrams for measures 14, 15, 16, and 17.

Chord diagrams for measures 14, 15, 16, and 17. Measure 14: $\begin{matrix} 2 & 3 & 4 \\ 1 & 2 & 3 \end{matrix}$. Measure 15: $\begin{matrix} 2 & 3 & 4 \\ 1 & 2 & 3 \end{matrix}$. Measure 16: $\begin{matrix} 2 & 3 & 4 \\ 1 & 2 & 3 \end{matrix}$. Measure 17: $\begin{matrix} 2 & 3 & 4 \\ 1 & 2 & 3 \end{matrix}$.

Handwritten musical notation for measures 18-21. The top staff shows a melody with lyrics: "Xu pa ki stre pa" and "Kax kon san kap ste pa pa". The bottom staff shows chord diagrams for measures 18, 19, 20, and 21.

Chord diagrams for measures 18, 19, 20, and 21. Measure 18: $\begin{matrix} 2 & 3 & 4 \\ 1 & 2 & 3 \end{matrix}$. Measure 19: $\begin{matrix} 2 & 3 & 4 \\ 1 & 2 & 3 \end{matrix}$. Measure 20: $\begin{matrix} 2 & 3 & 4 \\ 1 & 2 & 3 \end{matrix}$. Measure 21: $\begin{matrix} 2 & 3 & 4 \\ 1 & 2 & 3 \end{matrix}$.

Handwritten musical notation for measures 22-26. The top staff shows a melody with lyrics: "skay tu qe ji tayai ko pa" and "Gonjaton kai san". The bottom staff shows chord diagrams for measures 22, 23, 24, 25, and 26.

Chord diagrams for measures 22, 23, 24, 25, and 26. Measure 22: $\begin{matrix} 2 & 3 & 4 \\ 1 & 2 & 3 \end{matrix}$. Measure 23: $\begin{matrix} 2 & 3 & 4 \\ 1 & 2 & 3 \end{matrix}$. Measure 24: $\begin{matrix} 2 & 3 & 4 \\ 1 & 2 & 3 \end{matrix}$. Measure 25: $\begin{matrix} 2 & 3 & 4 \\ 1 & 2 & 3 \end{matrix}$. Measure 26: $\begin{matrix} 2 & 3 & 4 \\ 1 & 2 & 3 \end{matrix}$.

Handwritten musical notation for measures 27-30. The top staff shows a melody with lyrics: "Skapu a - - kor". The bottom staff shows chord diagrams for measures 27, 28, 29, and 30. Measures 29 and 30 are marked "Final".

Chord diagrams for measures 27, 28, 29, and 30. Measure 27: $\begin{matrix} 2 & 3 & 4 \\ 1 & 2 & 3 \end{matrix}$. Measure 28: $\begin{matrix} 2 & 3 & 4 \\ 1 & 2 & 3 \end{matrix}$. Measure 29: $\begin{matrix} 2 & 3 & 4 \\ 1 & 2 & 3 \end{matrix}$. Measure 30: $\begin{matrix} 2 & 3 & 4 \\ 1 & 2 & 3 \end{matrix}$.

10.1.02

F. O. ANEMOS TENNHE JA NX+A

♩ = 58

Handwritten musical notation for the first system, featuring treble and bass staves with notes, rests, and dynamic markings.

Handwritten musical notation for the second system, continuing the piece with various rhythmic patterns and articulation marks.

Handwritten musical notation for the third system, showing further development of the musical theme.

Handwritten musical notation for the fourth system, including the lyrics "F O a-ve pas jorvat on NX toe kau to" written below the notes.

Handwritten musical notation for the fifth system, featuring more complex rhythmic structures and dynamic markings.

Handwritten musical notation for the sixth system, starting with the dynamic marking "P cres" (Piano crescendo).

Handwritten musical notation for the seventh system, continuing the piece with various musical notations.

P cres

27.

Handwritten musical score for the first system, marked **F**. It consists of three staves: a vocal line with lyrics, a piano accompaniment line, and a bass line. The lyrics are "Kıyı ve denler sarıymış ki vî Göl-ğörsün to".

Handwritten musical score for the second system, marked **F**. It consists of three staves: a vocal line with lyrics, a piano accompaniment line, and a bass line. The lyrics are "Kıyı ve denler sarıymış ki vî Göl-ğörsün to".

Handwritten musical score for the third system, marked **P cresc**. It consists of three staves: a vocal line with lyrics, a piano accompaniment line, and a bass line. The lyrics are "Ba".

Handwritten musical score for the fourth system, marked **F**. It consists of three staves: a vocal line with lyrics, a piano accompaniment line, and a bass line. The lyrics are "Gos" and "ms".

Handwritten musical score for the first system. It consists of three staves: a vocal line and two piano accompaniment staves. The vocal line has lyrics: "Kibvixta yev va ce tau Suv tau". The piano accompaniment features a complex rhythmic pattern with many beamed notes and rests. A dynamic marking "p" is present.

Handwritten musical score for the second system. It consists of three staves: a vocal line and two piano accompaniment staves. The vocal line has lyrics: "Koru - m Xda n". The piano accompaniment continues with a similar rhythmic pattern. A dynamic marking "f" is present.

Handwritten musical score for the third system. It consists of three staves: a vocal line and two piano accompaniment staves. The vocal line has lyrics: "Kicxi ve su-pa vor Kuu tau yee". The piano accompaniment features a complex rhythmic pattern with many beamed notes and rests. A dynamic marking "f" is present.

Handwritten musical score for the fourth system. It consists of three staves: a vocal line and two piano accompaniment staves. The vocal line has lyrics: "Tau pa Van Kuu nau ce". The piano accompaniment features a complex rhythmic pattern with many beamed notes and rests. Dynamic markings "p" and "D" are present.

Handwritten musical score for the first system, featuring a vocal line and piano accompaniment. The piano part includes dense chordal textures with many notes. A large 'F' is written above the system.

Handwritten musical score for the second system. The vocal line contains the lyrics: "pour lui j'aurais été plus tôt". The piano accompaniment continues with complex textures. Dynamic markings include "cresc" and "ff".

Handwritten musical score for the third system. The piano part features a prominent melodic line in the right hand. Dynamic markings include "dim", "pp", and "cresc".

Handwritten musical score for the fourth system. The piano part has a more active texture. Dynamic markings include "pp" and "cresc".

31

dim *P*

Spe pas konfuzi Spe pas konfuzi

dim *P*

pa tu

P *F*

H su

P *F*

dim *P*

KANTO SI su

dim *P*

Handwritten musical score for the first system. It features a vocal line with lyrics and two piano accompaniment staves. The lyrics are: "F W'epi vt an tray kai xanpist o an tray to du va". The music includes various rhythmic values and dynamic markings such as *f*.

Handwritten musical score for the second system. It continues the vocal line and piano accompaniment. The lyrics are: "14 170 W'epi". The music includes dynamic markings such as *f* and *W'epi*.

Handwritten musical score for the third system. It continues the vocal line and piano accompaniment. The lyrics are: "96 tra xanpist paxan kai to pax do W'epi vt kai xanpist kai kai xanpist". The music includes dynamic markings such as *f* and *W'epi*.

Handwritten musical score for the fourth system. It continues the vocal line and piano accompaniment. The lyrics are: "P kan - ov - ov - vt". The music includes dynamic markings such as *P* and *ov*.

Handwritten musical score for the first system. It features a vocal line in G major with lyrics: "kiepi vt ju-voe koe koe juo pi ogyu voe ka to po voe". Below the vocal line are piano accompaniment staves with chords and rhythmic markings. A dynamic marking 'p' is present.

Handwritten musical score for the second system. It continues the vocal line with lyrics: "sta". The piano accompaniment includes various chord structures and rhythmic patterns. A dynamic marking 'p' is present.

Handwritten musical score for the third system. The vocal line includes lyrics: "koi yevuce n po voe". The piano accompaniment features complex chordal textures. A dynamic marking 'p' is present.

Handwritten musical score for the fourth system. The vocal line includes lyrics: "sta", "tov koe", "po koe du ty kov n tt per", "jev- vt". The piano accompaniment includes dynamic markings 'p' and 'f'.

Handwritten musical notation for the first system, including a vocal line and a guitar accompaniment line. The lyrics are "es se ka tera pa h es ju va s".

Handwritten musical notation for the second system, including a vocal line and a guitar accompaniment line. The lyrics are "es se ka tera pa h es ju va s se ka".

Handwritten musical notation for the third system, including a vocal line and a guitar accompaniment line. The lyrics are "The es".

Handwritten signature: *W. M. G. G. G.*
 Handwritten text: *Adura*
 Handwritten date: *13.7.02*

8. O APOLOS O ΣΤΕΡΝΟ

$\text{♩} = 90$

Musical notation for the first system, including a treble clef, a key signature of one sharp (F#), and a 3/4 time signature. The melody begins with a rest followed by a quarter note G4, then a half note A4-B4. The lyrics "Pa - pa - - - pa - pa - pa" are written below the notes. A fermata is placed over the first two notes.

$\text{♩} = 90$

Musical notation for the second system, including a bass clef and a 3/4 time signature. The accompaniment consists of a steady eighth-note pattern. The lyrics "Pa - pa - pa - - - pa - pa - pa" are written below the notes. A fermata is placed over the first two notes.

Musical notation for the third system, including a treble clef, a key signature of one sharp (F#), and a 3/4 time signature. The melody continues with a quarter note G4, then a half note A4-B4. The lyrics "Pa - pa - pa - - - pa - pa - pa" are written below the notes. A fermata is placed over the first two notes.

Musical notation for the fourth system, including a bass clef and a 3/4 time signature. The accompaniment continues with a steady eighth-note pattern. The lyrics "Pa - pa - pa - - - pa - pa - pa" are written below the notes. A fermata is placed over the first two notes.

Musical notation for the fifth system, including a treble clef, a key signature of one sharp (F#), and a 3/4 time signature. The melody continues with a quarter note G4, then a half note A4-B4. The lyrics "Pa - pa - pa - - - pa - pa - pa" are written below the notes. A fermata is placed over the first two notes.

Musical notation for the sixth system, including a bass clef and a 3/4 time signature. The accompaniment continues with a steady eighth-note pattern. The lyrics "Pa - pa - pa - - - pa - pa - pa" are written below the notes. A fermata is placed over the first two notes.

Musical notation for the seventh system, including a treble clef, a key signature of one sharp (F#), and a 3/4 time signature. The melody continues with a quarter note G4, then a half note A4-B4. The lyrics "Pa - pa - pa - - - pa - pa - pa" are written below the notes. A fermata is placed over the first two notes.

Musical notation for the eighth system, including a bass clef and a 3/4 time signature. The accompaniment continues with a steady eighth-note pattern. The lyrics "Pa - pa - pa - - - pa - pa - pa" are written below the notes. A fermata is placed over the first two notes.

Handwritten musical score for the first system. The top staff is a vocal line in treble clef with a 3/4 time signature. The lyrics are "Vra - po viai Sg au - - - - - pi -". The bottom staff is a piano accompaniment in bass clef with a 3/4 time signature, featuring chords and a bass line.

Handwritten musical score for the second system. The top staff is a vocal line in treble clef with a 3/4 time signature. The lyrics are "oi - - - - - po viai Sg oi - - - - -". The bottom staff is a piano accompaniment in bass clef with a 3/4 time signature, featuring chords and a bass line.

Handwritten musical score for the third system. The top staff is a vocal line in treble clef with a 3/4 time signature. The lyrics are "oi - - - - - po viai Sg oi - - - - -". The bottom staff is a piano accompaniment in bass clef with a 3/4 time signature, featuring chords and a bass line.

Handwritten musical score for the fourth system. The top staff is a vocal line in treble clef with a 3/4 time signature. The lyrics are "oi - - - - - po viai Sg oi - - - - -". The bottom staff is a piano accompaniment in bass clef with a 3/4 time signature, featuring chords and a bass line.

Handwritten musical score for the fifth system. The top staff is a vocal line in treble clef with a 3/4 time signature. The lyrics are "oi - - - - - po viai Sg oi - - - - -". The bottom staff is a piano accompaniment in bass clef with a 3/4 time signature, featuring chords and a bass line.

Handwritten musical score for the sixth system. The top staff is a vocal line in treble clef with a 3/4 time signature. The lyrics are "oi - - - - - po viai Sg oi - - - - -". The bottom staff is a piano accompaniment in bass clef with a 3/4 time signature, featuring chords and a bass line.

Handwritten musical score for the seventh system. The top staff is a vocal line in treble clef with a 3/4 time signature. The lyrics are "oi - - - - - po viai Sg oi - - - - -". The bottom staff is a piano accompaniment in bass clef with a 3/4 time signature, featuring chords and a bass line.

Handwritten musical score for the eighth system. The top staff is a vocal line in treble clef with a 3/4 time signature. The lyrics are "oi - - - - - po viai Sg oi - - - - -". The bottom staff is a piano accompaniment in bass clef with a 3/4 time signature, featuring chords and a bass line.

Handwritten musical score for the ninth system. The top staff is a vocal line in treble clef with a 3/4 time signature. The lyrics are "oi - - - - - po viai Sg oi - - - - -". The bottom staff is a piano accompaniment in bass clef with a 3/4 time signature, featuring chords and a bass line.

Handwritten musical notation on a single staff with lyrics: "Sae - keo a" and "ka rōa ki iu a pa Sae -".

Handwritten musical notation on two staves (treble and bass clef) with rhythmic markings.

Handwritten musical notation on a single staff with lyrics: "pa Sae - keo a" and "FO No-pa Sae".

Handwritten musical notation on two staves (treble and bass clef) with rhythmic markings.

Handwritten musical notation on a single staff with lyrics: "rao Sae. rao rao iu vakaoro Xa pa".

Handwritten musical notation on two staves (treble and bass clef) with rhythmic markings.

Handwritten musical notation on a single staff with lyrics: "Sae rāi iu rā pa tae -" and "rao rōa Xa iu pa".

Handwritten musical notation on two staves (treble and bass clef) with rhythmic markings.

Handwritten musical notation for the first system, featuring a treble clef, a key signature of two flats, and a common time signature. The notation includes notes, rests, and dynamic markings such as *ff* and *va*.

Handwritten musical notation for the second system, including a bass clef and a key signature of two flats. It features complex rhythmic patterns and chordal structures.

Handwritten musical notation for the third system, featuring a treble clef and a key signature of two flats. It includes dynamic markings like *ff* and *va*.

Handwritten musical notation for the fourth system, including a bass clef and a key signature of two flats. It features complex rhythmic patterns and chordal structures.

Handwritten musical notation for the fifth system, featuring a treble clef, a 3/4 time signature, and a key signature of two flats. It includes dynamic markings like *p* and *ff*.

Handwritten musical notation for the sixth system, including a bass clef, a 4/4 time signature, and a key signature of two flats. It features complex rhythmic patterns and chordal structures.

Handwritten musical notation for the seventh system, featuring a treble clef, a 3/4 time signature, and a key signature of two flats. It includes dynamic markings like *ff* and *va*.

Handwritten musical notation for the eighth system, including a bass clef, a 4/4 time signature, and a key signature of two flats. It features complex rhythmic patterns and chordal structures.

Handwritten musical notation for the first system, featuring a vocal line and a piano accompaniment. The vocal line includes the lyrics "Xo - - - Pa" and dynamic markings "p" and "f".

Handwritten musical notation for the second system, showing piano accompaniment with various chords and rhythmic patterns. A dynamic marking "f" is present at the end of the system.

Handwritten musical notation for the third system, featuring a vocal line with lyrics "ju - o su ju ps on - du Pa - B". It includes dynamic markings "p" and "ff".

Handwritten musical notation for the fourth system, showing piano accompaniment with complex chord structures and rhythmic figures.

Handwritten musical notation for the fifth system, featuring a vocal line with lyrics "Xo - - - Pa" and dynamic markings "ff".

Handwritten musical notation for the sixth system, showing piano accompaniment with dynamic markings "ff".

Handwritten musical notation for the seventh system, featuring a vocal line with lyrics "Va ft (cu) var Ato" and dynamic markings "dm".

Handwritten musical notation for the eighth system, showing piano accompaniment with dynamic markings "dm".

9- ΓΗΡΑ ΤΩΝ ΔΡΟΜΩΝ ΤΟΥ ΑΓΙΟΥ

Handwritten musical notation for the first system, including a treble clef, a key signature of one flat (B-flat), and a 4/4 time signature. The notation features a melodic line with a long slur and a bass line with chords and rhythmic patterns.

Handwritten musical notation for the second system, continuing the melody and accompaniment. It includes a treble clef, a key signature of one flat, and a 4/4 time signature. The notation shows a continuation of the melodic line and the bass line.

Handwritten musical notation for the third system, including lyrics in Greek. The notation is partially crossed out with a large 'X'. The lyrics are: "ΚΑΙ ΤΑ ΣΤΕΦΑΝΟΥ ΔΡΟΜΩΝ ΤΩΝ ΑΓΙΩΝ" and "ΟΤΙ ΠΑΡΕΤΗΣ ΤΟΝ ΔΡΟΜΟΝ ΤΟΥ ΑΓΙΟΥ ΚΑΙ ΤΟΝ ΧΑΡΗΤΟΣ ΤΩΝ ΑΓΙΩΝ ΚΑΙ ΤΟΝ ΧΑΡΗΤΟΣ ΤΩΝ ΑΓΙΩΝ".

Handwritten musical notation for the fourth system, including lyrics in Greek. The notation is partially crossed out with a large 'X'. The lyrics are: "ΟΤΙ ΟΙ ΑΓΙΟΙ ΤΗΣ ΧΑΡΗΣ ΤΩΝ ΑΓΙΩΝ ΚΑΙ ΤΟΝ ΧΑΡΗΤΟΣ ΤΩΝ ΑΓΙΩΝ" and "ΚΑΙ ΤΑ ΣΤΕΦΑΝΟΥ ΔΡΟΜΩΝ ΤΩΝ ΑΓΙΩΝ".

10 fingers 3 PCS

Am A⁴ S. Kai and Kai ran ϕ

8^{b₂}
7^{b₂}

PIND
||

Handwritten musical score for voice and piano. The vocal line is in 8/8 time and includes the lyrics: "d. rivi / fus / po / kar / gra / Xa / Ph / Xa / gra / phi / sh / To-ver / gra / gra". The piano accompaniment consists of chords and rhythmic patterns.

Handwritten musical score for piano. This system shows the piano accompaniment for the first system, featuring chords and rhythmic patterns.

Handwritten musical score for voice and piano. The vocal line includes the word "INVOLTA" and the lyrics "pa / pa / ni / pa / pa / non". The piano accompaniment includes a circled symbol \oplus .

Handwritten musical score for piano. This system shows the piano accompaniment for the second system, featuring chords and rhythmic patterns.

Handwritten musical score for voice and piano. The vocal line includes the lyrics "Klav / Klav". The piano accompaniment includes a circled symbol \oplus and a large, stylized signature or scribble on the right side.

Handwritten musical score for voice and piano. The vocal line includes the word "FF" (fortissimo). The piano accompaniment includes a circled symbol \oplus .

Handwritten musical score for piano. This system shows the piano accompaniment for the third system, featuring chords and rhythmic patterns.

1. 1000
 2. 1000
 3. 1000
 4. 1000
 5. 1000
 6. 1000
 7. 1000
 8. 1000
 9. 1000
 10. 1000
 11. 1000
 12. 1000
 13. 1000
 14. 1000
 15. 1000
 16. 1000
 17. 1000
 18. 1000
 19. 1000
 20. 1000
 21. 1000
 22. 1000
 23. 1000
 24. 1000
 25. 1000
 26. 1000
 27. 1000
 28. 1000
 29. 1000
 30. 1000
 31. 1000
 32. 1000
 33. 1000
 34. 1000
 35. 1000
 36. 1000
 37. 1000
 38. 1000
 39. 1000
 40. 1000
 41. 1000
 42. 1000
 43. 1000
 44. 1000
 45. 1000
 46. 1000
 47. 1000
 48. 1000
 49. 1000
 50. 1000
 51. 1000
 52. 1000
 53. 1000
 54. 1000
 55. 1000
 56. 1000
 57. 1000
 58. 1000
 59. 1000
 60. 1000
 61. 1000
 62. 1000
 63. 1000
 64. 1000
 65. 1000
 66. 1000
 67. 1000
 68. 1000
 69. 1000
 70. 1000
 71. 1000
 72. 1000
 73. 1000
 74. 1000
 75. 1000
 76. 1000
 77. 1000
 78. 1000
 79. 1000
 80. 1000
 81. 1000
 82. 1000
 83. 1000
 84. 1000
 85. 1000
 86. 1000
 87. 1000
 88. 1000
 89. 1000
 90. 1000
 91. 1000
 92. 1000
 93. 1000
 94. 1000
 95. 1000
 96. 1000
 97. 1000
 98. 1000
 99. 1000
 100. 1000

