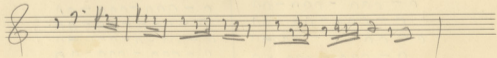
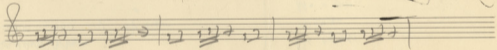
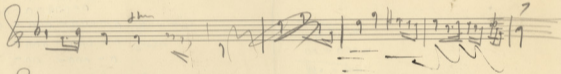
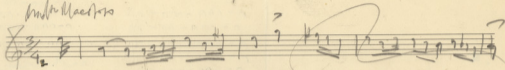


Moderato



1 2 4 8
4 8 16 32

Handwritten musical notation on five staves. The notation includes notes, rests, and some illegible text written below the staves.

Handwritten musical notation on five staves. The notation includes notes, rests, and some illegible text written below the staves.

Handwritten musical notation on five staves. The notation includes notes and rests.

Handwritten musical notation on two staves, featuring treble clefs and various rhythmic and melodic lines.

Handwritten musical notation on two staves, including a treble clef and a bass clef, with notes and rests.

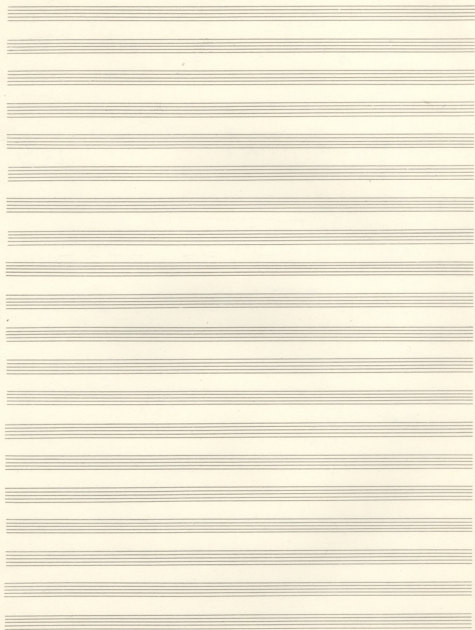
Handwritten musical notation on two staves, showing a treble clef and a bass clef, with notes and rests.

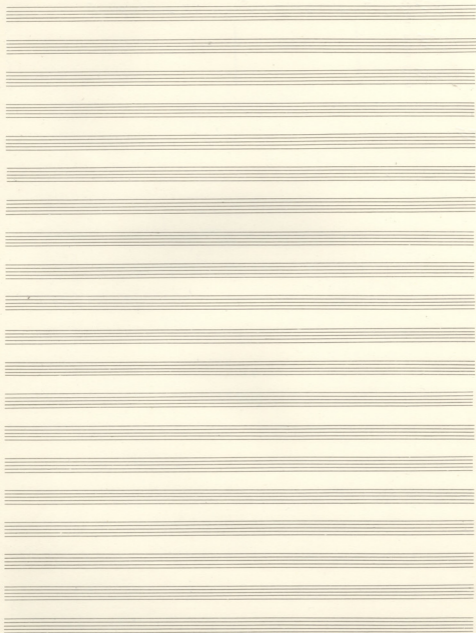
Handwritten musical notation on two staves, including a treble clef and a bass clef, with notes and rests.

ΣΟΝΑΤΙΝΑ Νο 2

ΠΑΡΤΙ'58

ΣΥΣΤΗ





Handwritten musical notation on a three-staff system. The top staff is in treble clef, the middle in alto clef, and the bottom in bass clef. All three staves share a key signature of one sharp (F#) and a time signature of 12/8. The notation includes quarter notes, eighth notes, and a half note with a slur, spanning two measures.

Handwritten musical notation on a three-staff system. The top staff is in treble clef, the middle in alto clef, and the bottom in bass clef. All three staves share a key signature of one sharp (F#). The notation includes a treble clef, a sharp sign, and a fermata-like symbol.

A series of ten empty musical staves, each consisting of five horizontal lines, arranged vertically on the page.

4 2
8 3
5
111

Handwritten musical notation for the first system, including staves for Oboe (Oboi), Cornet (Corni), and Trombone (Trombe). The notation includes notes, rests, and dynamic markings such as *mp* and *pp*. There are some scribbles and corrections in the Cornet and Trombone parts.

Handwritten musical notation for the second system, including staves for Violin I (Viol. I), Violin II (Viol. II), and Viola (Viola). The notation includes notes, rests, and dynamic markings. There are significant scribbles and corrections in the Violin II and Viola parts.

Handwritten musical notation for the third system, featuring a single staff with notes and rests.

Handwritten musical notation for the fourth system, featuring a single staff with notes and rests.

Handwritten musical notation for the fifth system, featuring a single staff with notes and rests.

Handwritten musical notation for the sixth system, featuring a single staff with notes and rests.

Handwritten musical notation for the seventh system, featuring a single staff with notes and rests.

Handwritten musical notation for the eighth system, featuring a single staff with notes and rests.

Handwritten musical notation for the ninth system, featuring a single staff with notes and rests.

Handwritten musical notation for the tenth system, featuring a single staff with notes and rests.

Handwritten musical notation on a single staff, featuring a treble clef, a key signature of one flat, and a 2/4 time signature. The notation includes a series of eighth and sixteenth notes, with some notes beamed together. A small diagram of a piano keyboard is sketched in the upper right corner of the staff.

Handwritten musical notation on a single staff, featuring a treble clef and a key signature of one flat. The notation consists of several measures of music with various note values and rests.

Handwritten musical notation on a single staff, featuring a treble clef and a key signature of one flat. The notation shows a sequence of notes with stems pointing downwards, possibly indicating a descending scale or a specific melodic line.

Handwritten musical notation on a single staff, featuring a treble clef and a key signature of one flat. The notation includes a series of notes with stems pointing downwards, interspersed with rests.

Handwritten musical notation on a single staff, featuring a treble clef and a key signature of one flat. The notation is dense with many notes, some beamed together, and includes some dynamic markings.

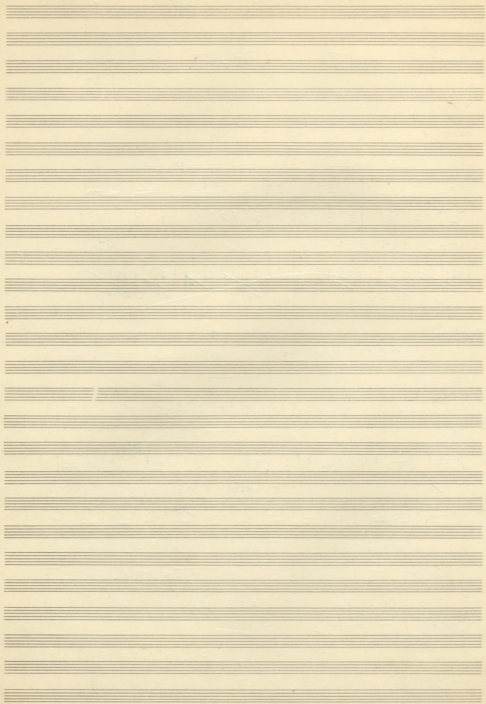
Handwritten musical notation on a single staff, featuring a treble clef and a key signature of one flat. The notation includes a series of notes with stems pointing downwards, and a large, wavy line is drawn across the staff, possibly indicating a performance instruction or a specific musical effect.

Handwritten musical notation on a single staff, featuring a treble clef and a key signature of one flat. The notation includes a series of notes with stems pointing downwards, and a large, wavy line is drawn across the staff, similar to the previous block.

PARIS
88958

6/6
1 2 3 4 5 6
1 2 3 4 5 6

pp



Handwritten musical score for a string quartet. The first system includes a double bass part (labeled 'Basso') and a violin part (labeled 'Violin'). The key signature is two flats (B-flat and E-flat), and the time signature is 3/4. The music features rhythmic patterns with accents and slurs.

Second system of the handwritten musical score. It includes a violin part (labeled 'Violin') and a viola part (labeled 'Viola'). The key signature remains two flats. The notation includes various musical ornaments and dynamic markings.

Third system of the handwritten musical score, featuring a cello part (labeled 'Cello'). The key signature is two flats. The music continues with rhythmic patterns and slurs.

Fourth system of the handwritten musical score, featuring a second violin part (labeled 'Violin II'). The key signature is two flats. The notation includes slurs and dynamic markings.

Fifth system of the handwritten musical score, featuring a second viola part (labeled 'Viola II'). The key signature is two flats. The music continues with rhythmic patterns and slurs.

Sixth system of the handwritten musical score, featuring a second cello part (labeled 'Cello II'). The key signature is two flats. The notation includes slurs and dynamic markings.

Seventh system of the handwritten musical score, featuring a piano part (labeled 'Piano'). The key signature is two flats. The piano part includes complex rhythmic patterns and slurs. Below the piano part, there are additional staves for a double bass and a cello, both with rhythmic patterns.

Viol. I

Viol. II

pedal

du

Alto

Vcllo

2. Menu
Cesari

Violini
Soli

Con sordina

leg.

Picc.

Vcllo

Solo

Vcllo

Alto

Vcllo

Alto

Vcllo

Violini Soli

Viol. I

Viol. II

Alto

Vcllo

2. Menu
Cesari

Con sordina

leg.

Picc.

Vcllo

Solo

Vcllo

Alto

Vcllo

Alto

Vcllo

8

1

2

3

4

5

A

B

C

D

E

F

G

H

I

J

K

L

M

N

O

P

Q

R

S

T

U

V

W

X

Y

Z

Violini II

Violini II

Corni I

Fl
Fg
Cm
Timp

Alto
Violini II

Violini I

Corno

Violini II

Violini I

Corno

Fg

Violini II

Violini I

Corno

Violini II

Violini I

Violini II

Violini I

Corno

Handwritten musical notation on a page of ten staves. The notation is written in blue ink and includes various musical symbols such as notes, rests, and clefs. The first two staves contain the most detailed notation, including a treble clef and a key signature of one flat. The notation is somewhat dense and appears to be a sketch or a study. The remaining eight staves are mostly blank, with some faint lines and markings.

3
2
1

5x2
2x5

Sax $\{ \begin{matrix} 8 \\ 16 \end{matrix} \}$ $\{ \begin{matrix} 8 \\ 16 \end{matrix} \}$

Sax $\{ \begin{matrix} 8 \\ 16 \end{matrix} \}$

Sax $\{ \begin{matrix} 8 \\ 16 \end{matrix} \}$

Sax $\{ \begin{matrix} 8 \\ 16 \end{matrix} \}$

Handwritten musical notation on a single staff. It begins with a treble clef and a key signature of one flat (B-flat). The notation includes several chords, some with accidentals (sharps and flats), and melodic lines. There are dynamic markings such as '>' and 'L'. The piece concludes with a double bar line and a final chord.

Handwritten musical notation on a grand staff (treble and bass clefs). The notation is dense with chords and melodic fragments. It features various accidentals and dynamic markings. The piece ends with a double bar line and a final chord.

Handwritten musical notation on a grand staff. This section continues the complex chordal and melodic development. It includes various accidentals and dynamic markings. The piece ends with a double bar line and a final chord.

Handwritten musical notation on a grand staff. This section features a series of chords and melodic lines. It includes various accidentals and dynamic markings. The piece ends with a double bar line and a final chord.

Handwritten musical notation on a grand staff. This section shows a continuation of the musical themes. It includes various accidentals and dynamic markings. The piece ends with a double bar line and a final chord.

Handwritten musical notation on a grand staff. This section is marked with a '8' and includes some specific annotations. It features a series of chords and melodic lines. The piece ends with a double bar line and a final chord.

Handwritten musical notation on a grand staff. This section continues the musical themes. It includes various accidentals and dynamic markings. The piece ends with a double bar line and a final chord.

Handwritten musical notation on a grand staff. This section features a section with a wavy line and some annotations. It includes various accidentals and dynamic markings. The piece ends with a double bar line and a final chord.

Handwritten musical notation on a grand staff. This section shows the final part of the piece. It includes various accidentals and dynamic markings. The piece ends with a double bar line and a final chord.

Handwritten musical notation for the first system, consisting of three staves. The notation is dense with notes, rests, and accidentals, including a large bracketed section in the upper staff.

Handwritten musical notation for the second system, consisting of two staves with rhythmic patterns and some accidentals.

Handwritten musical notation for the third system, consisting of two staves with rhythmic patterns and some accidentals.

Handwritten musical notation for the fourth system, consisting of two staves with rhythmic patterns and some accidentals.

Handwritten musical notation for the fifth system, consisting of two staves with rhythmic patterns and some accidentals.

Handwritten musical notation for the sixth system, consisting of two staves with rhythmic patterns and some accidentals.

Handwritten musical notation for the seventh system, consisting of two staves with rhythmic patterns and some accidentals.

Handwritten musical notation system 1, featuring a treble clef and a 2/8 time signature. The system contains two staves. The upper staff has a complex melodic line with many beamed notes and some corrections. The lower staff contains a bass line with notes and rests.

Handwritten musical notation system 2, featuring a treble clef and a 2/8 time signature. The system contains two staves. The upper staff continues the melodic line with some dense passages. The lower staff continues the bass line.

Handwritten musical notation system 3, featuring a treble clef and a 2/8 time signature. The system contains two staves. The upper staff shows some heavy scribbles and corrections. The lower staff continues the bass line.

Handwritten musical notation system 4, featuring a treble clef and a 2/8 time signature. The system contains two staves. The upper staff has a melodic line with some beamed notes. The lower staff continues the bass line.

Handwritten musical notation system 5, featuring a treble clef and a 2/8 time signature. The system contains two staves. The upper staff has a melodic line with some beamed notes. The lower staff continues the bass line.

Handwritten musical notation system 6, featuring a treble clef and a 2/8 time signature. The system contains two staves. The upper staff has a melodic line with some beamed notes. The lower staff continues the bass line.

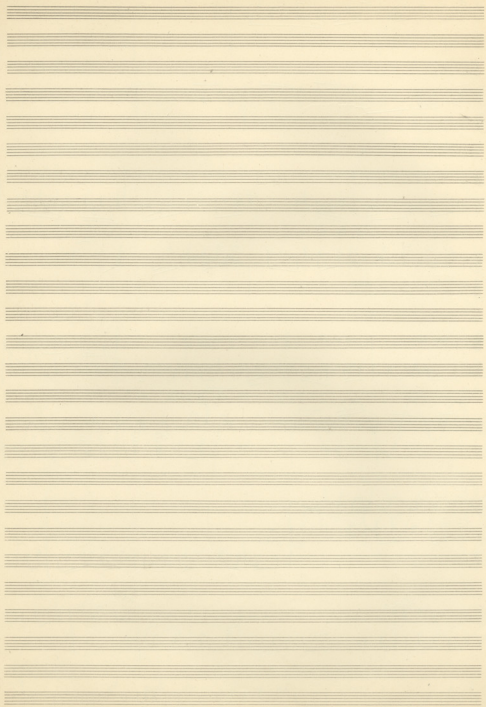
Handwritten musical notation system 7, featuring a treble clef and a 2/8 time signature. The system contains two staves. The upper staff has a melodic line with some beamed notes. The lower staff continues the bass line.

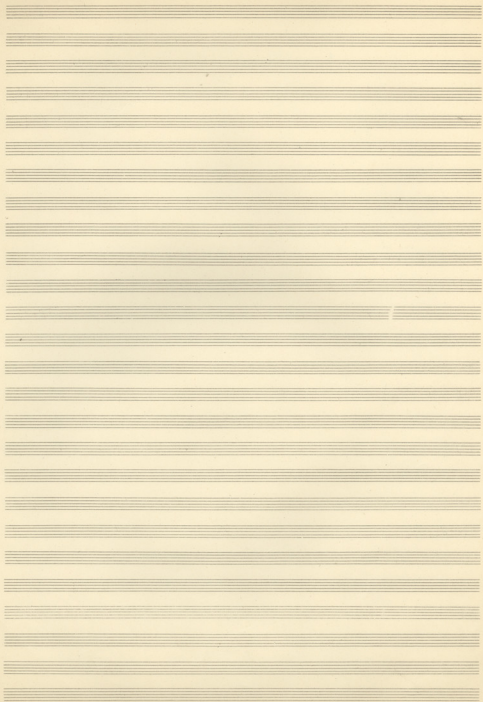
Handwritten musical notation system 8, featuring a treble clef and a 2/8 time signature. The system contains two staves. The upper staff has a melodic line with some beamed notes. The lower staff continues the bass line.

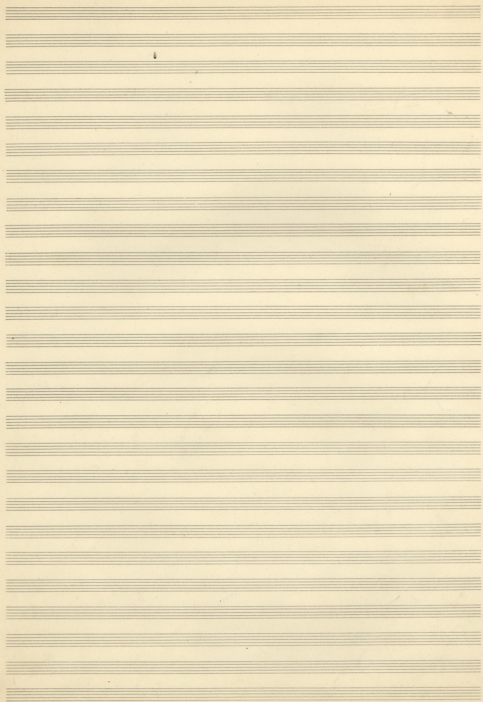
Handwritten musical notation system 9, featuring a treble clef and a 2/8 time signature. The system contains two staves. The upper staff has a melodic line with some beamed notes. The lower staff continues the bass line.

-5-

Solo
 con tutti
 Paris
 4 II 58







Handwritten musical notation for the first system, including treble and bass clefs, a key signature of one flat, and various rhythmic notations.

Handwritten musical notation for the second system, continuing the piece with treble and bass clefs.

Handwritten musical notation for the third system, featuring a treble clef and a measure with a fermata.

2

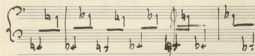
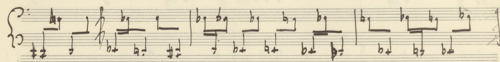
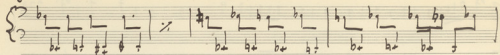
Handwritten musical notation for the fourth system, including a treble clef and a key signature change to one sharp.

SONATINA N° 2
POUR VIOLON ET PIANO N 2

3

2

8v. 2ms



Handwritten musical score on page 13, featuring four systems of staves. The notation includes notes, rests, and dynamic markings such as *mf* and *f*. The first system consists of two staves with a long horizontal line above them. The second system consists of two staves with a brace on the left. The third system consists of two staves with a brace on the left. The fourth system consists of two staves with a brace on the left. The notation is dense and includes various rhythmic values and articulation marks.

Handwritten musical notation on a grand staff. The bass clef part is highly active with dense sixteenth and thirty-second notes. The treble clef part contains fewer notes, including some accidentals.

Handwritten musical notation on a grand staff. The bass line remains dense with rhythmic patterns. The treble line has several notes with accidentals, including a sharp sign.

Handwritten musical notation on a grand staff. The bass line continues with dense rhythmic patterns. The treble line has several notes with accidentals, including a sharp sign.

Handwritten musical notation on a grand staff. The bass line continues with dense rhythmic patterns. The treble line has several notes with accidentals, including a sharp sign.

Handwritten musical notation on a grand staff. The bass line continues with dense rhythmic patterns. The treble line has several notes with accidentals, including a sharp sign.

Handwritten musical notation on a grand staff. The bass line continues with dense rhythmic patterns. The treble line has several notes with accidentals, including a sharp sign.

Handwritten musical notation on a grand staff. The bass line continues with dense rhythmic patterns. The treble line has several notes with accidentals, including a sharp sign.

Handwritten musical score for piano, consisting of six systems of staves. Each system has a treble clef staff on top and a bass clef staff on the bottom. The notation includes various rhythmic values, accidentals, and dynamic markings.

The first system shows a treble clef staff with a whole note followed by a half note, and a bass clef staff with a complex rhythmic pattern. The second system continues with similar notation. The third system features a treble clef staff with a half note and a quarter note, and a bass clef staff with a complex rhythmic pattern. The fourth system shows a treble clef staff with a half note and a quarter note, and a bass clef staff with a complex rhythmic pattern. The fifth system features a treble clef staff with a half note and a quarter note, and a bass clef staff with a complex rhythmic pattern. The sixth system shows a treble clef staff with a half note and a quarter note, and a bass clef staff with a complex rhythmic pattern.

1 1 1 2 | 1 2 2 1 | 2 2 1 2 | 2 2 2 1 | 2 2 1 2 | 2 2 1 2 | 2 2 1 2 | 2 2 1 2 |

Handwritten musical notation for the first system, featuring a treble and bass clef with various notes and rests.

Handwritten musical notation for the second system, including a treble clef and a bass clef with a circled '4' below the bass line.

Handwritten musical notation for the third system, showing a treble clef and a bass clef with a circled '4' below the bass line.

Handwritten musical notation for the fourth system, featuring a treble and bass clef with complex rhythmic patterns.

Handwritten musical notation for the fifth system, including a treble clef and a bass clef with a circled '4' below the bass line.

Handwritten musical notation for the sixth system, featuring a treble and bass clef with complex rhythmic patterns and 'x' marks below the bass line.

Handwritten musical notation, first system. It features a single staff with a treble clef and a 3/8 time signature. The notation includes various rhythmic values such as eighth and sixteenth notes, and rests. The key signature has one flat (B-flat).

Handwritten musical notation, second system. It consists of two staves. The upper staff has a treble clef and the lower staff has a bass clef. Both are in 3/8 time. The notation includes eighth and sixteenth notes, rests, and a sharp sign (#) in the upper staff.

Handwritten musical notation, third system. It consists of two staves. The upper staff has a treble clef and the lower staff has a bass clef. Both are in 3/8 time. The notation includes eighth and sixteenth notes, rests, and a sharp sign (#) in the upper staff.

Handwritten musical notation, fourth system. It consists of two staves. The upper staff has a treble clef and the lower staff has a bass clef. Both are in 3/8 time. The notation includes eighth and sixteenth notes, rests, and a sharp sign (#) in the upper staff.

Handwritten musical notation, fifth system. It consists of two staves. The upper staff has a treble clef and the lower staff has a bass clef. Both are in 3/8 time. The notation includes eighth and sixteenth notes, rests, and a sharp sign (#) in the upper staff.

FINALE

S

The image shows a handwritten musical score for a finale, consisting of five systems of staves. The notation is dense and includes various musical symbols such as notes, rests, and dynamic markings. The first system begins with a treble clef and a 4/3 time signature. The second system features a bass clef and includes a 'p' (piano) dynamic marking. The third system contains complex rhythmic patterns and rests. The fourth system includes a 'p' dynamic marking and a 'rit.' (ritardando) marking. The fifth system concludes with a double bar line and a final cadence. The paper is aged and shows some staining.

Handwritten musical notation on a single staff, featuring a treble clef and a key signature of one flat. The notation includes a series of notes and rests, with some notes beamed together.

Handwritten musical notation on a grand staff (treble and bass clefs). The right-hand part contains a melodic line with some notes beamed together. The left-hand part contains chords. There are handwritten annotations 'S' and 'S.' above the staff, and a circled '9' below the bass clef. A diagonal line is drawn across the right side of this system.

Handwritten musical notation on a single staff, featuring a treble clef and a key signature of one flat. The notation includes a series of notes and rests, with some notes beamed together.

Handwritten musical notation on a single staff, featuring a treble clef and a key signature of one flat. The notation includes a series of notes and rests, with some notes beamed together.

Handwritten musical notation on a single staff, featuring a treble clef and a key signature of one flat. The notation includes a series of notes and rests, with some notes beamed together.

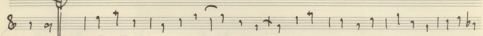
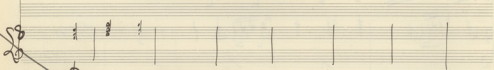
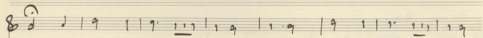
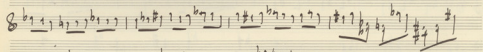
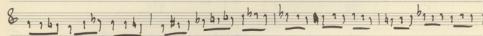
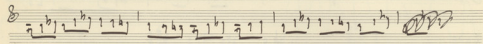
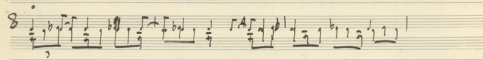
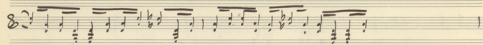
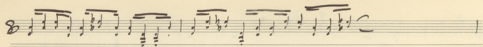
Handwritten musical notation on a single staff, featuring a treble clef and a key signature of one flat. The notation includes a series of notes and rests, with some notes beamed together.

Handwritten musical notation on a single staff, featuring a treble clef and a key signature of one flat. The notation includes a series of notes and rests, with some notes beamed together.

Handwritten musical notation on a single staff, featuring a treble clef and a key signature of one flat. The notation includes a series of notes and rests, with some notes beamed together.

Handwritten musical notation on a single staff, featuring a treble clef and a key signature of one flat. The notation includes a series of notes and rests, with some notes beamed together.

Handwritten musical notation on a single staff, featuring a treble clef and a key signature of one flat. The notation includes a series of notes and rests, with some notes beamed together.



Handwritten musical notation for the first system. The treble clef staff contains a melodic line with notes and rests, including a large flourish at the end. The bass clef staff contains chords and rests, with some notes written below the staff.

Handwritten musical notation for the second system. The treble clef staff features a melodic line with a large flourish. The bass clef staff contains chords and rests, with some notes written below the staff.

Handwritten musical notation for the third system. The treble clef staff contains a melodic line with notes and rests. The bass clef staff contains chords and rests, with some notes written below the staff.

Handwritten musical notation for the fourth system. The treble clef staff contains a melodic line with notes and rests. The bass clef staff contains chords and rests, with some notes written below the staff.

Handwritten musical notation for the fifth system. The treble clef staff contains a melodic line with notes and rests. The bass clef staff contains chords and rests, with some notes written below the staff.

Handwritten musical notation for the sixth system. The treble clef staff contains a melodic line with notes and rests. The bass clef staff contains chords and rests, with some notes written below the staff.

SONATINA N° 2

POUR VIOLON-PIANO

MIKIS THEODORAKIS

Handwritten musical score for Violin and Piano, titled "SONATINA N° 2" by Mikis Theodorakis. The score is written on five systems of staves. The first system shows the beginning with a treble clef, a 3/4 time signature, and a piano (pp) dynamic marking. The violin part features a melodic line with some rests and slurs, while the piano accompaniment consists of a dense, rhythmic pattern of eighth notes. The subsequent systems continue this pattern, with the violin part showing more melodic development and the piano part maintaining its intricate texture. The score concludes with a final system showing a cadence in the violin part and a corresponding piano accompaniment.

Handwritten musical notation for the first system. The top staff has a treble clef and contains a melodic line with various accidentals (sharps, flats, naturals) and a fermata. The bottom staff is a grand staff with piano accompaniment, showing dense chordal textures and arpeggiated figures.

Handwritten musical notation for the second system. The top staff continues the melodic line with a fermata. The bottom staff continues the piano accompaniment with similar dense textures.

Handwritten musical notation for the third system. The top staff continues the melodic line. The bottom staff continues the piano accompaniment.

Handwritten musical notation for the fourth system. The top staff continues the melodic line with a fermata. The bottom staff continues the piano accompaniment.

Handwritten musical notation for the fifth system. The top staff contains a melodic line with a fermata. The bottom staff features a section marked "pp" (pianissimo) with dense chordal textures.

Handwritten musical notation for the sixth system. The top staff contains a melodic line with various accidentals. The bottom staff continues the piano accompaniment with dense textures.

Handwritten musical score for piano, consisting of eight systems of staves. Each system includes a treble clef staff with a key signature of one flat and a bass clef staff with a key signature of two flats. The score features complex rhythmic patterns, including sixteenth and thirty-second notes, and dynamic markings such as *f*, *ff*, *F con*, and *Fain*. There are also some handwritten annotations and a dashed line indicating a section break.

Gen...

The first system of handwritten musical notation. It consists of a vocal line on a single staff with a treble clef and a piano accompaniment on two staves (treble and bass clefs). The vocal line begins with a dotted quarter note, followed by several eighth and sixteenth notes. The piano accompaniment features a complex rhythmic pattern with many sixteenth notes.

Gen...

The second system of handwritten musical notation. It continues the vocal and piano parts from the first system. The vocal line has a similar melodic structure. The piano accompaniment continues with dense sixteenth-note passages.

Gen...

The third system of handwritten musical notation. The vocal line shows some chromatic movement. The piano accompaniment remains highly rhythmic and complex.

The fourth system of handwritten musical notation. The vocal line has a more melodic and less rhythmic character compared to the previous systems. The piano accompaniment continues with its intricate sixteenth-note patterns.

mod.

The fifth system of handwritten musical notation. The vocal line features a long, sweeping melodic line. The piano accompaniment has a more sparse texture, with fewer notes than the previous systems.

The sixth system of handwritten musical notation. The vocal line concludes with a few notes, and the piano accompaniment ends with a final chord. An arrow points from the piano part to the vocal part.

Handwritten musical score system 1. The top staff is a treble clef with a key signature of one sharp (F#) and a common time signature (C). It contains a complex melodic line with many beamed notes and slurs. The bottom staff is a bass clef with a common time signature (C), showing a few notes and rests.

Handwritten musical score system 2. The top staff is a treble clef with a key signature of one sharp (F#) and a common time signature (C). It features a melodic line with slurs and some wavy lines below it. The bottom staff is a bass clef with a common time signature (C), showing notes and rests.

Handwritten musical score system 3. The top staff is a treble clef with a key signature of one sharp (F#) and a common time signature (C). It contains a melodic line with slurs and some wavy lines below it. The bottom staff is a bass clef with a common time signature (C), showing notes and rests.

Handwritten musical score system 4. The top staff is a treble clef with a key signature of one sharp (F#) and a common time signature (C). It contains a melodic line with slurs and some wavy lines below it. The bottom staff is a bass clef with a common time signature (C), showing notes and rests.

Handwritten musical score system 5. The top staff is a treble clef with a key signature of one sharp (F#) and a common time signature (C). It contains a melodic line with slurs and some wavy lines below it. The bottom staff is a bass clef with a common time signature (C), showing notes and rests.

Handwritten musical score system 6. The top staff is a treble clef with a key signature of one sharp (F#) and a common time signature (C). It contains a melodic line with slurs and some wavy lines below it. The bottom staff is a bass clef with a common time signature (C), showing notes and rests.

Handwritten musical notation, first system. Includes treble and bass clefs, a key signature of one sharp (F#), and a 3/4 time signature. The notation features various notes, rests, and dynamic markings.

Handwritten musical notation, second system. Continuation of the piece, showing complex rhythmic patterns and chordal structures.

Handwritten musical notation, third system. Includes a *pm* (pianissimo) dynamic marking and features dense chordal textures.

Handwritten musical notation, fourth system. Shows a transition in the music with various rhythmic figures and melodic lines.

Handwritten musical notation, fifth system. Includes dynamic markings such as *mezzo* and *f* (forte).

Handwritten musical notation, sixth system. Features a large 'X' mark over the notation, possibly indicating a correction or deletion.

Handwritten musical notation, seventh system. Continuation of the musical piece.

Handwritten musical notation, eighth system. The final system on the page, showing the concluding notes and rests.

