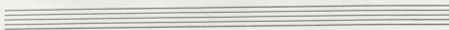
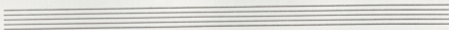


## ΕΡΩΦΙΑΗ

Corno II

Εισοδος

Handwritten musical score for Corno II, titled "ΕΡΩΦΙΑΗ" and "Εισοδος". The score consists of three staves of music in 6/8 time. The first staff begins with a wavy line and a forte (*ff*) dynamic marking. The second staff continues the melody with a mezzo-forte (*mf*) dynamic. The third staff concludes the piece with a repeat sign. The music features eighth and sixteenth notes, rests, and various dynamic markings.





# ΕΡΕΦΙΑΝ

Λίσσος

Trompeta III<sup>a</sup> in Do

Handwritten musical score for Trompeta III<sup>a</sup> in Do, featuring three staves of music. The score includes dynamic markings such as *pp* and *f*, and articulation like accents and slurs. The first staff begins with the instruction "cord." and contains several measures of music with accents and slurs. The second staff continues the melody with similar markings. The third staff features a triplet of eighth notes and concludes with a fermata. The notation is in a treble clef with a 2/8 time signature.

Two empty musical staves at the bottom of the page, intended for further notation or rehearsal marks.



ΕΡΘΙΑΝ

ΕΙΓΟΘΟΟ

Trompette II in Do

5/8 *sord.*

*sfz* *f*

*sfz* *f*

*sfz* *f*



EPOLI H

Trompette I<sup>a</sup> in Do

Figosos

8 *soad.*  
*ff* < *f* *sfz* < *f*

*ff* < *f*

*ff* < *f*





ΕΡΩΦΙΛΗ

Tuba

Liappi

Handwritten musical notation on a single staff, starting with a treble clef, a key signature of one flat (B-flat), and a 6/8 time signature. The notation consists of rhythmic patterns represented by vertical stems and flags, with some stems having small circles above them. The first measure contains a half note followed by a quarter note, and the subsequent measures contain groups of eighth notes.

Handwritten musical notation on a single staff, starting with a bass clef, a key signature of one flat (B-flat), and a 6/8 time signature. The notation consists of rhythmic patterns represented by vertical stems and flags, with some stems having small circles above them. The first measure contains a half note followed by a quarter note, and the subsequent measures contain groups of eighth notes.

Handwritten musical notation on a single staff, starting with a bass clef, a key signature of one flat (B-flat), and a 6/8 time signature. The notation consists of rhythmic patterns represented by vertical stems and flags, with some stems having small circles above them. The first measure contains a half note followed by a quarter note, and the subsequent measures contain groups of eighth notes. The piece concludes with a double bar line and a repeat sign.

Empty musical staff.

Empty musical staff.



# ΕΡΘΡΙΑΝ

Τζωνθόνε III<sup>ο</sup>

Εισαγωγή

*And.*



# ΕΡΩΦΙΑΗ

ΕΙΣΟΣΟΣ

Trombone I:

1. *sord.*



ΕΡΘΡΙΑΝ

Εισαγωγή

Trombone II<sup>o</sup>

Handwritten musical notation for Trombone II<sup>o</sup>, first staff. The staff is in bass clef with a 2/8 time signature. The music begins with a 'dada' marking above the first two notes. The notation includes quarter notes, eighth notes, and rests, with various accidentals (flats and naturals) and a fermata over the final note.

Handwritten musical notation for Trombone II<sup>o</sup>, second staff. This staff continues the piece with similar rhythmic patterns and accidentals, ending with a fermata.

Handwritten musical notation for Trombone II<sup>o</sup>, third staff. This staff contains a few notes with a fermata, followed by a double bar line.

Four empty musical staves for Trombone II<sup>o</sup>.

Four empty musical staves for Trombone II<sup>o</sup>.





ΕΡΟΦΙΑΗ

ΕΙΣΑΓΩΓΗ

C. Bari

Handwritten musical notation on a five-line staff. It begins with a bass clef and a 5/8 time signature. The notation consists of rhythmic symbols: a half note followed by a quarter note, then a quarter note followed by two eighth notes, then a half note followed by a quarter note, then a quarter note followed by two eighth notes, and finally a half note followed by a quarter note.

Handwritten musical notation on a five-line staff, continuing the previous line. It starts with a bass clef and a 5/8 time signature. The notation consists of a half note followed by a quarter note, then a quarter note followed by two eighth notes, then a half note followed by a quarter note, and finally a quarter note followed by two eighth notes.

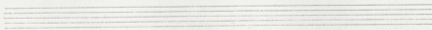
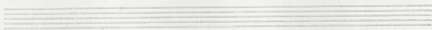
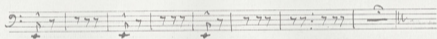
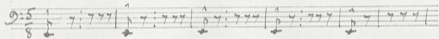
Handwritten musical notation on a five-line staff, concluding the piece. It starts with a bass clef and a 5/8 time signature. The notation consists of a half note followed by a quarter note, then a quarter note followed by two eighth notes, and ends with a double bar line and a fermata symbol. A large number '4' is written at the bottom right of the staff.



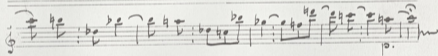
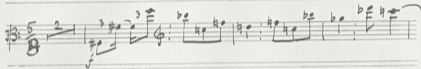
C. Bassi

ΕΡΩΦΙΑΗ

λιγοςος





ΑΕΙΕΡΕΦΙΛΗ  
Εισαγωγή

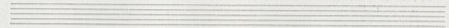
3



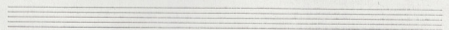
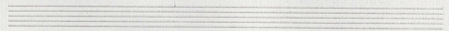
Alti

ΕΡΩΦΙΛΗ

Εισαγωγή



Handwritten musical notation for the introduction of 'Ερωφίλη'. The score is written on two staves. The first staff is in bass clef with a 5/8 time signature. It begins with a 2-measure rest, followed by a triplet of eighth notes (F4, G4, A4), and then a series of eighth and quarter notes with various accidentals (sharps and flats). The second staff is in treble clef and contains a series of quarter and eighth notes, some with slurs and accents, continuing the melodic line. A 'p' (piano) dynamic marking is present at the end of the second staff.







Alti

ΕΡΘΦΙΑΗ

Εισαγωγή

Handwritten musical notation for the introduction of the piece 'ΕΡΘΦΙΑΗ'. The notation is written on two staves. The first staff begins with a treble clef, a key signature of one flat (B-flat), and a 5/8 time signature. The melody starts with a quarter note G4, followed by a quarter note A4, and a quarter note B4. A triplet of eighth notes (C5, D5, E5) is marked with a '3' above it. The second staff continues the melody with a quarter note F5, followed by a quarter note G5, and a quarter note A5. The notation includes various accidentals (sharps, flats, naturals) and phrasing slurs. A dynamic marking 'f' is present in the second staff. The piece concludes with a double bar line and a fermata over the final note.

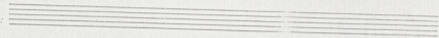
Two empty musical staves, one above the other, located below the main musical notation.



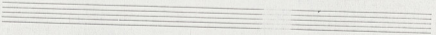
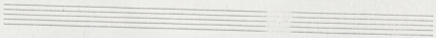
ΑΛΛΙ

ΕΡΩΦΙΛΗ

ΕΙΣΟΣ



Handwritten musical notation on two staves. The top staff is in bass clef with a 5/8 time signature. The bottom staff is in treble clef. The music includes various notes, rests, and dynamic markings like 'f' and 'p'. There are also some fingerings indicated, such as '2' and '3'.





Violoncelli

ΕΡΩΔΙΑΗ

ΠΙΟΣΟΝ

Handwritten musical notation for two staves. The first staff is in bass clef with a 5/4 time signature and a 'B' below it. It contains a melodic line with a triplet of eighth notes and various accidentals. The second staff is also in bass clef and contains a bass line with various accidentals and a fermata at the end.

Three empty musical staves.



Violoncelli

ΕΡΩΦΙΑΗ  
ΛΙΟΡΑΦ

3<sup>o</sup> Bass

Handwritten musical notation for the 3rd Bass part of a cello piece. The notation is written on two staves. The first staff begins with a 5/8 time signature and contains a sequence of notes with some triplets. The second staff continues the melody with various note values and rests. The piece concludes with a double bar line and a fermata.

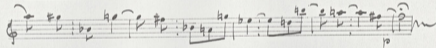
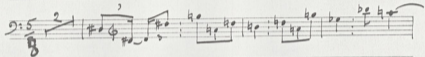
Two empty musical staves at the bottom of the page.





Violoncelli

ΕΡΩΦΙΑΗ  
Εισαγωγή



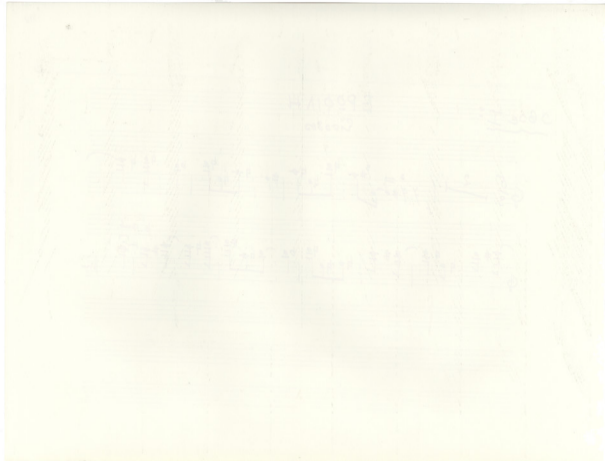
2

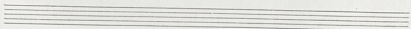
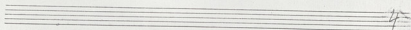
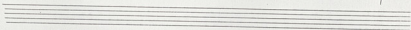
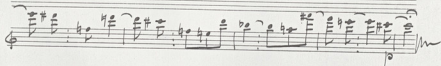


Violino II

ΕΡΩΤΙΑΗ

2100505



Violino II:ΕΡΩΦΙΑΗ  
Lissoy



Violino I:

ΕΡΩΦΙΑΗ  
Εισοδος

Handwritten musical notation for Violino I, first system. It features a treble clef, a 5/8 time signature, and a key signature of one sharp (F#). The notation includes a sequence of notes with a triplet of eighth notes, followed by quarter and eighth notes, and ends with a fermata over a chord.

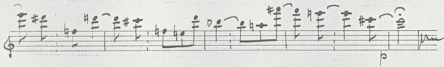
Handwritten musical notation for Violino I, second system. It continues the melody from the first system, featuring a treble clef, a key signature of one sharp, and various note values including quarter and eighth notes with slurs and accents. It concludes with a fermata over a chord.





Violino II:

ΕΡΘΙΑΗ  
ΕΓΓΟΣ





Violino II

ΕΡΩΦΙΑΗ

Εἰσοδος

Handwritten musical notation for Violino II, first system. It features a treble clef, a 5/8 time signature, and a key signature of one sharp (F#). The notation includes a melodic line with a triplet of eighth notes, followed by a series of chords and eighth notes. Fingerings 2, 3, and 4 are indicated above the notes.

Handwritten musical notation for Violino II, second system. It continues the melodic and harmonic material from the first system, featuring various chordal textures and melodic fragments. The notation ends with a double bar line and a fermata over the final note.



ΕΡΘΦΙΛΗ  
Cigarmı

Timpani  $\frac{5}{8}$   $\dot{\gamma}$   $\dot{\gamma}$  :  $\dot{\gamma}$   $\dot{b}\dot{e}$   $\dot{h}\dot{a}$  |  $\dot{\gamma}$   $\dot{\gamma}$  :  $\dot{\gamma}$   $\dot{b}\dot{e}$   $\dot{h}\dot{a}$  |  $\dot{\gamma}$   $\dot{\gamma}$  :  $\dot{\gamma}$   $\dot{b}\dot{e}$   $\dot{h}\dot{a}$  |  $\dot{\gamma}$   $\dot{\gamma}$  :  $\dot{\gamma}$   $\dot{b}\dot{e}$   $\dot{h}\dot{a}$

G. Cassa  $\frac{5}{8}$   $\hat{e}$   $\hat{e}$  :  $\hat{e}$   $\hat{e}$  |  $\hat{e}$   $\hat{e}$  :  $\hat{e}$   $\hat{e}$  |  $\hat{e}$   $\hat{e}$  :  $\hat{e}$   $\hat{e}$  |  $\hat{e}$   $\hat{e}$  :  $\hat{e}$   $\hat{e}$

$\dot{b}_1$   $\dot{\gamma}$   $\dot{\gamma}$  :  $\dot{\gamma}$   $\dot{b}\dot{e}$   $\dot{h}\dot{a}$  |  $\dot{\gamma}$   $\dot{\gamma}$  :  $\dot{\gamma}$   $\dot{b}\dot{e}$   $\dot{h}\dot{a}$  |  $\dot{\gamma}$   $\dot{\gamma}$  :  $\dot{\gamma}$   $\dot{b}\dot{e}$   $\dot{h}\dot{a}$  |  $\dot{\gamma}$   $\dot{\gamma}$  :  $\dot{\gamma}$   $\dot{b}\dot{e}$   $\dot{h}\dot{a}$

$\hat{e}$   $\hat{e}$  :  $\hat{e}$   $\hat{e}$  |  $\hat{e}$   $\hat{e}$  :  $\hat{e}$   $\hat{e}$  |  $\hat{e}$   $\hat{e}$  :  $\hat{e}$   $\hat{e}$  |  $\hat{e}$   $\hat{e}$  :  $\hat{e}$   $\hat{e}$

$\dot{b}_1$   $\dot{\gamma}$   $\dot{\gamma}$  :  $\dot{\gamma}$   $\dot{\gamma}$  |  $\dot{\gamma}$   $\dot{\gamma}$  :  $\dot{\gamma}$   $\dot{\gamma}$  |  $\dot{c}$  |

$\hat{e}$   $\hat{e}$  :  $\hat{e}$   $\hat{e}$  |  $\hat{e}$   $\hat{e}$  :  $\hat{e}$   $\hat{e}$  |  $\hat{c}$  |



Οβοε II

ΕΡΘΡΙΑΗ  
Εισοδος

Handwritten musical notation for Oboe II, titled "ΕΡΘΡΙΑΗ Εισοδος". The score is written on two staves. The first staff begins with a treble clef, a 5/8 time signature, and a key signature of one sharp (F#). It contains several measures of music, including triplets and slurs. The second staff continues the melody with various notes and rests, ending with a fermata. The word "perc." is written above the second staff.

Four empty musical staves for the Oboe II part.





Οβωε I:

ΕΡΟΦΙΛΗ  
Εισοδος

The first staff of music is written in treble clef with a 5/8 time signature. It begins with a fermata over the first measure, followed by a second measure with a '2' above it. The melody starts with a quarter note G4, followed by eighth notes A4, B4, and C5. There are various accidentals (sharps and naturals) and a dynamic marking 'f' (forte) below the first measure. The staff continues with several measures of eighth and quarter notes, ending with a fermata.

The second staff of music is written in treble clef. It contains several measures of music, primarily consisting of chords and short melodic fragments. There are various accidentals and dynamic markings, including 'p. sub.' (piano subito) above the final measure. The notation is somewhat sketchy and appears to be a continuation of the piece.

Three empty musical staves are provided below the second staff, but they contain no handwritten notation.



2 Fagotti

ΕΡΘΡΗ  
ΕΙΣΟΔΟΣ



Corno III<sup>o</sup>

ΕΡΩΦΙΑ Η

ΕΙΣ Ο Ο Ο Ο

Handwritten musical score for Corno III. The score consists of three staves of music. The first staff begins with a treble clef and a 3/8 time signature. The music is written in a key with one flat (B-flat major or D minor). The notation includes eighth and sixteenth notes, rests, and dynamic markings such as *sfz* and *f*. The second and third staves continue the melodic line with similar rhythmic patterns and dynamics. The score concludes with a double bar line and a fermata.

An empty musical staff consisting of five horizontal lines.

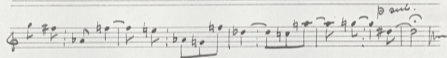
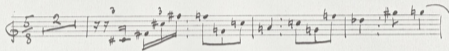
A second empty musical staff consisting of five horizontal lines.



Clarineto II in sib

ΕΡΩΦΙΝΗ

ΕΙΣΟΔΟΣ

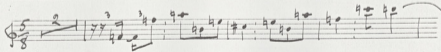






Clarinetto I<sup>o</sup> in Sib

ΕΡΩΦΙΑΗ  
 ΛΙΟΣΟΣ

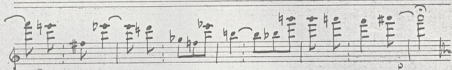
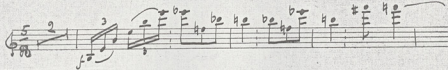




Violino I

ΕΡΩΦΙΑΗ

Εισόδος





2 Flauti

ΕΡΩΦΙΑΗ  
Σίγοςος

*a 2.*

*p sub.*

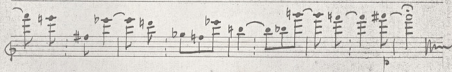
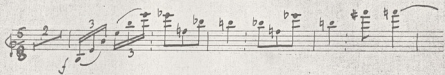
*ML*



Violino I:

ΕΡΩΦΙΑΗ

Πισσορι







Violino I:

ΕΡΩΦΙΑΗ

ΕΙΣΟΔΟΣ

Handwritten musical notation for Violino I, first system. It features a treble clef, a 5/8 time signature, and a key signature of one flat. The notation includes a dynamic marking 'f', a triplet of eighth notes, and various accidentals (sharps and flats) on the notes.

Handwritten musical notation for Violino I, second system. It continues the piece with similar notation, including a dynamic marking 'f' and a fermata over the final note.



Piccolo

ΕΡΩΦΙΛΗ

Σίσυφος

Handwritten musical score for Piccolo, titled "ΕΡΩΦΙΛΗ Σίσυφος". The score is written on two staves in 5/8 time. The first staff contains the initial melody, starting with a 2-measure rest, followed by a triplet of eighth notes, and then a series of eighth notes with various accidentals (sharps, flats, naturals). The second staff continues the melody with similar rhythmic patterns and accidentals. Below the second staff are four empty staves.





Violino I<sup>o</sup>

ΕΡΘΡΙΑ Η

Εισοδος

Handwritten musical notation for Violino I, first system. It features a treble clef, a 5/8 time signature, and a key signature of one flat (B-flat). The notation includes a sequence of eighth and sixteenth notes with various accidentals (sharps, flats, naturals) and a triplet of eighth notes. A dynamic marking 'f' is present at the beginning.

Handwritten musical notation for Violino I, second system. It continues the melody with similar rhythmic patterns and accidentals. A dynamic marking 'p' is visible at the end of the system.



Violino I<sup>o</sup>

ΕΡΩΦΙΑΗ

Εἰσόδος

