

# CANTO GENERAL

PAOLO NORJDA

MIL'S THEOPORANIS

## AMERICA INSURECTA

4  
4

Andante  $\text{♩} = 69$

Solo  $\text{C}^{\#}$

S  $\text{C}^{\#}$

A  $\text{C}^{\#}$

T  $\text{C}^{\#}$

B  $\text{C}^{\#}$

1  $\text{C}^{\#}$

2  $\text{C}^{\#}$

3  $\text{C}^{\#}$

Clarinete 1  $\text{C}^{\#}$

Clarinetto 2  $\text{C}^{\#}$

Flauto 3  $\text{C}^{\#}$

Piano I  $\text{C}^{\#}$

Piano II  $\text{C}^{\#}$

Basso  $\text{C}^{\#}$

1  $\text{C}^{\#}$

2  $\text{C}^{\#}$

3  $\text{C}^{\#}$

4  $\text{C}^{\#}$

5  $\text{C}^{\#}$

6  $\text{C}^{\#}$

Timp  $\text{C}^{\#}$

S



Solo

S

A

T

B

1

2

3

1

2

3

1

2

1

2

Basso

Tutti

GRAND

Musical staff with treble clef, key signature of one flat, and 4/4 time signature. The staff contains a melodic line with various rhythmic values and articulations. There are two circled numbers, 1 and 2, marking specific measures.

Two staves of piano accompaniment. The upper staff has a treble clef and the lower staff has a bass clef. Both staves contain vertical lines representing chords or rests, with some rhythmic markings.

Two staves of piano accompaniment, similar to the previous block, showing vertical lines and rhythmic markings.

Two staves of piano accompaniment. The upper staff has a treble clef and the lower staff has a bass clef. The notation includes vertical lines and some rhythmic markings.

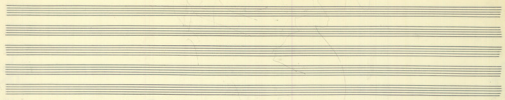
Two staves of piano accompaniment. The upper staff has a treble clef and the lower staff has a bass clef. The notation includes vertical lines and some rhythmic markings.

Two staves of piano accompaniment. The upper staff has a treble clef and the lower staff has a bass clef. The notation includes vertical lines and some rhythmic markings.

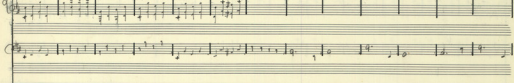
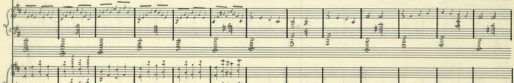
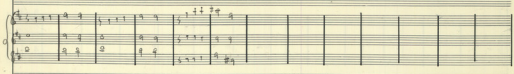
Two staves of piano accompaniment. The upper staff has a treble clef and the lower staff has a bass clef. The notation includes vertical lines and some rhythmic markings. On the right side, there is a section labeled "Hauptstimme (Solo)" with a list of instruments and their parts:

Orgel	5	4
Viola	5	4
Violon	5	4
Violon	5	4
Violon	5	4
Violon	5	4

Two staves of piano accompaniment. The upper staff has a treble clef and the lower staff has a bass clef. The notation includes vertical lines and some rhythmic markings. At the bottom right, there is a dynamic marking "p" and a fermata symbol.



5



Melody

Bass

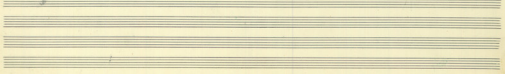
Trpts

T. Tam

Flute

Clarinet

Temp



Musical notation for the first system, featuring a treble clef staff with a melodic line and three piano accompaniment staves below it.

Empty musical staves for the second system, with some faint rhythmic markings at the end.

Musical notation for the third system, including a treble clef staff with a melodic line and three piano accompaniment staves below it.

Musical notation for the fourth system, including a treble clef staff with a melodic line and three piano accompaniment staves below it.

Musical notation for the fifth system, including a treble clef staff with a melodic line and three piano accompaniment staves below it.

*Molto* *Crucis*

Musical notation for the sixth system, including a treble clef staff with a melodic line and three piano accompaniment staves below it. The word "Piano" is written in the lower left of the system.

Musical notation for the seventh system, including a treble clef staff with a melodic line and three piano accompaniment staves below it.

Handwritten musical score on page 6, featuring a large red 'LX' at the top center. The score is arranged in a multi-stemmed format with the following parts from top to bottom:

- Solo:** A single melodic line with various ornaments and slurs.
- S:** A staff with a circled '4' in the first measure.
- A:** A staff with a treble clef.
- T:** A staff with a treble clef.
- B:** A staff with a bass clef.
- Violin I:** A staff with a treble clef.
- Violin II:** A staff with a treble clef.
- Viola:** A staff with a treble clef.
- Cello:** A staff with a bass clef.
- Double Bass:** A staff with a bass clef.
- Trumpet:** A staff with a treble clef, including dynamic markings like *sf* and *ff*.

The score includes various musical notations such as slurs, ornaments, and dynamic markings. The bottom of the page shows empty staves.

*ΔΔΔ*

*Viol. Basses  
for ME-ME  
KNO-NO  
KNO-NO*

5 6 2 5 6

5  
8

*Shawm (NE-NE-NE) 16-16*

*Sim*

*mp*

5 6 2 5 6

*Polleggiato*





Handwritten musical score on page 9, numbered 351. The score is written on multiple staves. At the top, there are time signature changes: 2/8, 5/8, 2/8, 5/8, 6/8, 5/8, and 6/8. The music includes vocal lines with lyrics such as "Si LA Su sup", "LA", and "Si LA". There are also instrumental parts, possibly for guitar or piano, indicated by rhythmic notation and some markings like "5 >". A blue vertical line is drawn through the score, and a blue circle highlights a specific measure in the lower section.

Handwritten musical score on aged paper, featuring multiple systems of staves. The score includes various musical notations such as notes, rests, and dynamic markings. Above the first system, there are handwritten time signatures: 2/8, 5/8, 6/8, a circled 6, 2/8, 7/8, 3/8, and 6/8. A circled 6 is also present above the second system. The bottom system includes a complex rhythmic notation with vertical lines and arrows, and the lyrics "Si la Sa Sa Si Si Si Si" are written below it. The paper shows signs of age, including yellowing and some staining.

$\frac{2}{8}$     $\frac{7}{8}$     $\frac{3}{8}$     $\frac{3}{4}$     $\frac{2}{4}$     $\frac{5}{8}$     $\frac{2}{4}$     $\frac{5}{8}$

Handwritten musical notation for the first system, featuring a vocal line with lyrics and piano accompaniment. The notation includes notes, rests, and bar lines.

Handwritten musical notation for the second system, continuing the vocal and piano parts from the first system.

Handwritten musical notation for the third system, including a vocal line and piano accompaniment.

Handwritten musical notation for the fourth system, including a vocal line and piano accompaniment.

Handwritten musical notation for the fifth system, including a vocal line and piano accompaniment.

Handwritten musical notation for the sixth system, including a vocal line and piano accompaniment.

Handwritten musical notation for the seventh system, including a vocal line and piano accompaniment.

Handwritten musical notation for the eighth system, including a vocal line and piano accompaniment.

Handwritten musical notation for the ninth system, including a vocal line and piano accompaniment.

Handwritten musical notation for the tenth system, including a vocal line and piano accompaniment.

ΔΔΔ

7/4      5/8      2/4      8/8      6/8      3/8      5/8

Handwritten musical score with multiple systems of staves. The score includes various time signatures (7/4, 5/8, 2/4, 8/8, 6/8, 3/8, 5/8) and musical notation. There are handwritten annotations in red and black ink, including circled numbers 7 and 8, and arrows pointing to specific parts of the score. The word "Guedes" is written in a circle, and "Palm" is written in a circle. A large "X" is drawn on the right side of the page.

\* In a system de base um grupo  
 de 4 notas (quarta, quinta, sexta, sétima)



6/8      2/4      6/8      5/8      6/8      9/8

1. *Basso*

1. *Grav.*

3. *ma Sim FaB Sim Siu sim sim PAB Da ma Sim PAB Sim Sim Sim Siu*

6/8      2/4      6/8      5/8      6/8      9/8

5/8                      6/8                      2/4                      6/8                      2/4                      6/8

LA SIV FAB min SIV FAB SIV SIV SIV min SIV FAB SIV SIV FAB min FAB SIV

5/8                      6/8                      2/4                      6/8                      2/4                      6/8

Tutto rito

6/8      3/8   9/8      6/8   3/8   6/8      3/8   6/8

6/8      3/8   9/8      6/8   3/8   6/8      3/8   6/8

3 9 6 3 6 3 6 9  
8 8 8 8 8 8 8 8

3 9 6 3 6 3 6 9  
8 8 8 8 8 8 8 8



The image shows a page of handwritten musical notation, numbered 17 at the top center and 358 in the top right corner. The page contains several systems of staves. The top system features a treble clef and a large blue flourish. The middle systems contain various musical notations, including notes, rests, and blue markings. The bottom system features a bass clef and a large blue flourish. The notation is dense and appears to be a complex piece of music, possibly for a string ensemble or a solo instrument with multiple staves.



Handwritten musical score for a large ensemble, including strings, woodwinds, brass, and percussion. The score is written on multiple staves with various musical notations, including notes, rests, and dynamic markings.

**Violins (Vn I, Vn II):** The top section of the score, with Vn I and Vn II staves. The Vn I part features a melodic line with many slurs and accents. The Vn II part provides harmonic support with rhythmic patterns.

**Woodwinds (Fl, Clarinet, Bassoon):** The middle section, including Flute (Fl), Clarinet (Cl), and Bassoon (Fag) parts. Each instrument has its own staff with specific melodic and rhythmic lines.

**Brass (Trumpets, Trombones):** The lower middle section, including Trumpets (Tr) and Trombones (Tbn). The parts are characterized by rhythmic patterns and some melodic fragments.

**Percussion (Perc I, Perc II, Timpani):** The bottom section, including Percussion I (Perc I), Percussion II (Perc II), and Timpani (Tim). The Perc I and II parts have complex rhythmic patterns, while the Timpani part has a more melodic line with some slurs.

**Other Elements:** There are several empty staves at the bottom of the page, and some text labels like "Perc I", "Perc II", and "Tim" are placed near their respective staves. The score is written in a clear, legible hand.

This page contains a handwritten musical score on aged, yellowed paper. The score is organized into several systems, each consisting of multiple staves. The notation includes rhythmic values, stems, beams, and various musical symbols. The systems are labeled on the right side with 'C' and 'G' (likely indicating C major and G major keys or similar). The first system has four staves. The second system has three staves. The third system has three staves. The fourth system has three staves. The fifth system has three staves. The sixth system has three staves. The seventh system has three staves. The eighth system has three staves. The ninth system has three staves. The tenth system has three staves. The eleventh system has three staves. The twelfth system has three staves. The thirteenth system has three staves. The fourteenth system has three staves. The fifteenth system has three staves. The sixteenth system has three staves. The seventeenth system has three staves. The eighteenth system has three staves. The nineteenth system has three staves. The twentieth system has three staves. The twenty-first system has three staves. The twenty-second system has three staves. The twenty-third system has three staves. The twenty-fourth system has three staves. The twenty-fifth system has three staves. The twenty-sixth system has three staves. The twenty-seventh system has three staves. The twenty-eighth system has three staves. The twenty-ninth system has three staves. The thirtieth system has three staves. The thirty-first system has three staves. The thirty-second system has three staves. The thirty-third system has three staves. The thirty-fourth system has three staves. The thirty-fifth system has three staves. The thirty-sixth system has three staves. The thirty-seventh system has three staves. The thirty-eighth system has three staves. The thirty-ninth system has three staves. The fortieth system has three staves. The forty-first system has three staves. The forty-second system has three staves. The forty-third system has three staves. The forty-fourth system has three staves. The forty-fifth system has three staves. The forty-sixth system has three staves. The forty-seventh system has three staves. The forty-eighth system has three staves. The forty-ninth system has three staves. The fiftieth system has three staves. The fifty-first system has three staves. The fifty-second system has three staves. The fifty-third system has three staves. The fifty-fourth system has three staves. The fifty-fifth system has three staves. The fifty-sixth system has three staves. The fifty-seventh system has three staves. The fifty-eighth system has three staves. The fifty-ninth system has three staves. The sixtieth system has three staves. The sixty-first system has three staves. The sixty-second system has three staves. The sixty-third system has three staves. The sixty-fourth system has three staves. The sixty-fifth system has three staves. The sixty-sixth system has three staves. The sixty-seventh system has three staves. The sixty-eighth system has three staves. The sixty-ninth system has three staves. The seventieth system has three staves. The seventy-first system has three staves. The seventy-second system has three staves. The seventy-third system has three staves. The seventy-fourth system has three staves. The seventy-fifth system has three staves. The seventy-sixth system has three staves. The seventy-seventh system has three staves. The seventy-eighth system has three staves. The seventy-ninth system has three staves. The eightieth system has three staves. The eighty-first system has three staves. The eighty-second system has three staves. The eighty-third system has three staves. The eighty-fourth system has three staves. The eighty-fifth system has three staves. The eighty-sixth system has three staves. The eighty-seventh system has three staves. The eighty-eighth system has three staves. The eighty-ninth system has three staves. The ninetieth system has three staves. The ninety-first system has three staves. The ninety-second system has three staves. The ninety-third system has three staves. The ninety-fourth system has three staves. The ninety-fifth system has three staves. The ninety-sixth system has three staves. The ninety-seventh system has three staves. The ninety-eighth system has three staves. The ninety-ninth system has three staves. The hundredth system has three staves.

*Handwritten signature and date:*  
 [Signature]  
 2.7.24