

ΦΥΣΤΡΟΜΟΝΙΚΑ

ΚΙΣΑΡΑ I

ΚΙΣΑΡΑ II

ΜΠΕΡΟΓΙΑΝΝΗΣ (Em)

*Μητρ. Σελ. 100*

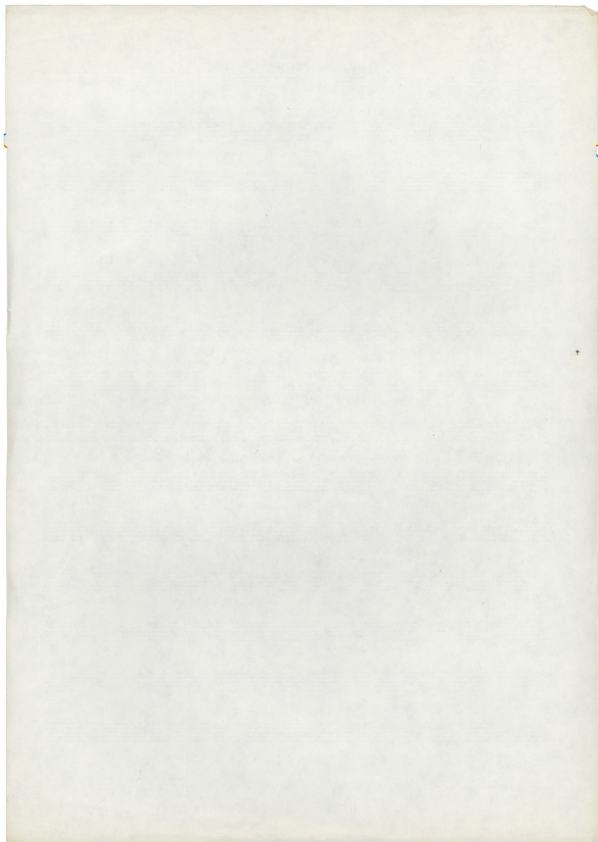
B<sub>m</sub> E<sub>m</sub> — D E<sub>m</sub> B<sub>m</sub> E<sub>m</sub> D B<sub>m</sub>

A<sub>m</sub> B<sub>m</sub> B<sub>m</sub> E<sub>m</sub> — D E<sub>m</sub> E<sub>m</sub> G A<sub>m</sub> D

E<sub>m</sub> — B<sub>m</sub> A<sub>m</sub> B<sub>m</sub> D B<sub>m</sub> E<sub>m</sub> A<sub>m</sub> D

A<sub>m</sub> G E<sub>m</sub> A<sub>m</sub> — C C B<sub>m</sub> B<sub>m</sub> A<sub>m</sub> D B<sub>m</sub>

E<sub>m</sub> B<sub>m</sub> C LA<sub>m</sub> B<sub>m</sub> D A<sub>m</sub> D E<sub>m</sub> =

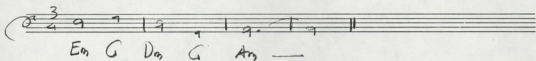
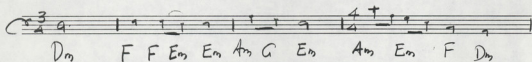
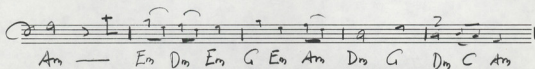
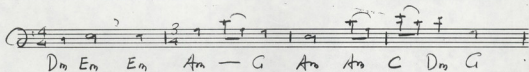
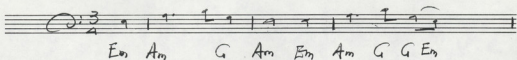


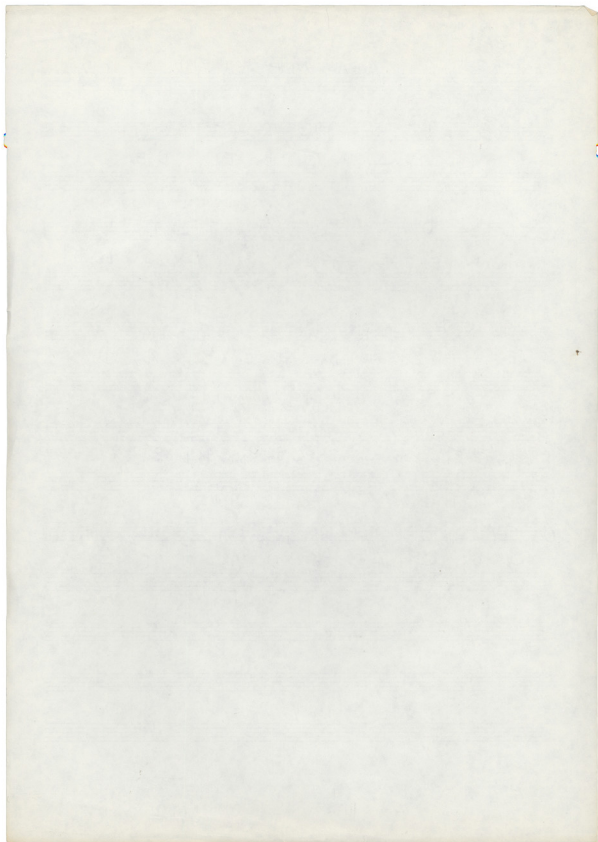
VCELLO  
ΚΙΘΑΡΑ I  
ΚΙΘΑΡΑ II

12

ΜΙΣΘΟΤΙΑΝΝΗΣ (Am)

Mimis Tsilipis





KISADA I  
KISADA II  
ΦΛΟΓΕΡΑ

m

13

M. V. G. S.

VIOLINO I (Solo) ΜΠΕΡΟΤΙΑΝΝΑ (D<sub>2</sub>)

Handwritten musical notation on a single staff, featuring notes and stems with stems pointing upwards. The time signature is 3/4.

Em ↓ Am ↓ G ↓ Am Em ↓ Am G Dm

Handwritten musical notation on a single staff, featuring notes and stems with stems pointing upwards. The time signature is 3/4.

Am Dm - C Dm Am Dm - C Am

~~Gm Dm Dm Am G Am G Dm G~~

Handwritten musical notation on a single staff, featuring notes and stems with stems pointing upwards. The time signature is 3/4.

~~Gm Am Am Dm - C Dm - F Gm C~~

Handwritten musical notation on a single staff, featuring notes and stems with stems pointing upwards. The time signature is 3/4.

~~Am Dm Gm Am G Dm Am Dm G~~

~~Dm Am Gm Am C Am Dm Gm C~~

Handwritten musical notation on a single staff, featuring notes and stems with stems pointing upwards. The time signature is 3/4.

~~Gm F Dm Gm Bb Bb Am Am Dm C Am~~

~~Gm Dm Es Gm Dm F Gm F Am~~

Handwritten musical notation on a single staff, featuring notes and stems with stems pointing upwards. The time signature is 3/4.

Dm Am Bb Gm Am C Gm C Dm

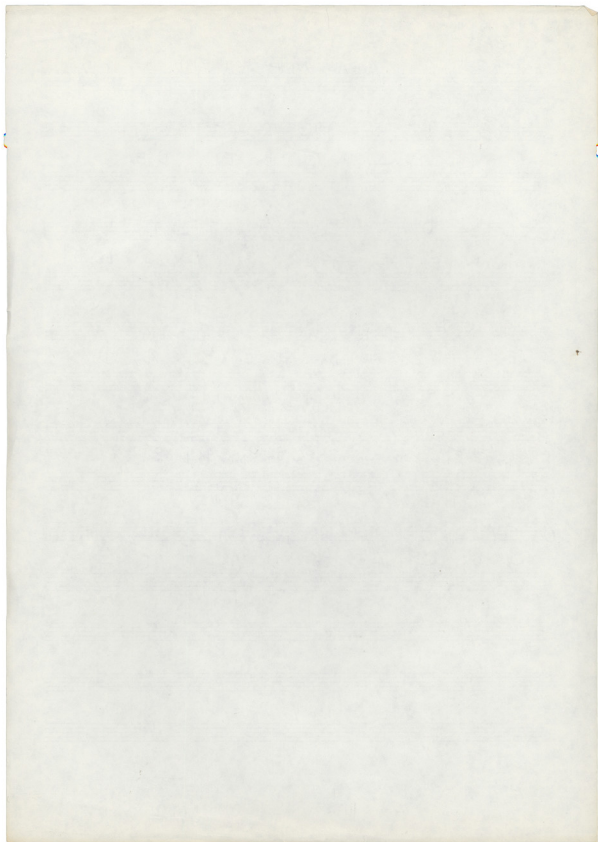


KISAPA I  
KISAPA II  
ΦΛΟΓΕΡΑ

Mitsy Schymin

VIOLINO I (SOL) ΜΠΕΡΟΤΑΝΝΑ (Dm)

Am Dm - C Dm Am Dm - C Am

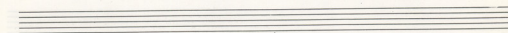
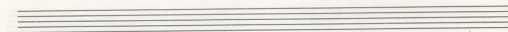
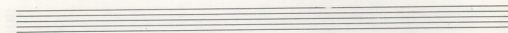
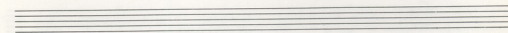
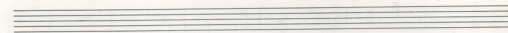
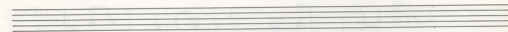
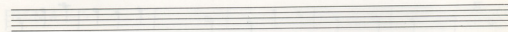
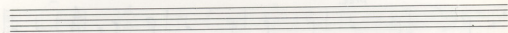
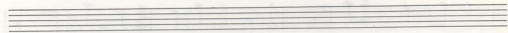
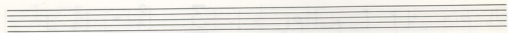
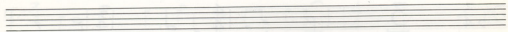
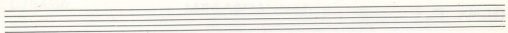


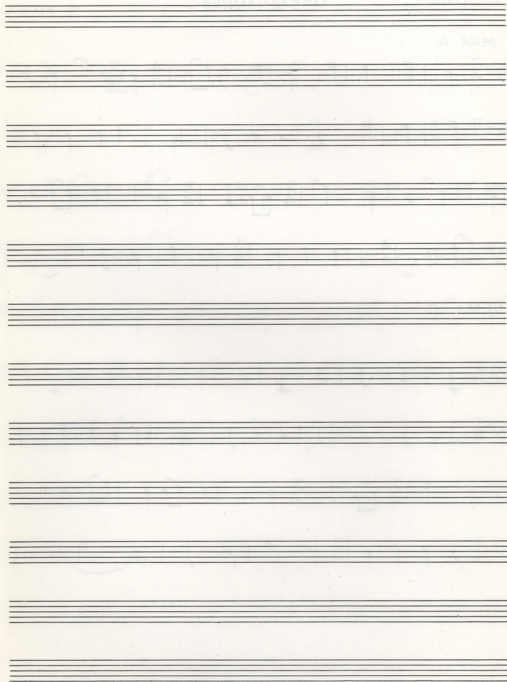


## ΘΕΜΑ Γ

Handwritten musical score for 'ΘΕΜΑ Γ' in bass clef with a key signature of one flat (B-flat). The score consists of seven staves of music. The first staff begins with a 3/4 time signature, followed by a 3-measure rest, and then continues with notes in 4/4 and 3/4 time signatures. The second staff starts with a 3-measure rest, followed by notes in 2/4 and 3/4 time signatures. The third staff contains notes in 4/4 and 3/4 time signatures. The fourth staff includes a 'Pizz.' (pizzicato) instruction above the first measure, followed by notes in 4/4 time signature. The fifth staff continues with notes in 3/4 time signature. The sixth staff features notes in 2/4, 3/4, and 4/4 time signatures. The seventh staff contains notes in 4/4 and 3/4 time signatures, ending with a whole rest.

Four empty musical staves, each consisting of five horizontal lines, provided for additional notation or practice.





C/BASSO

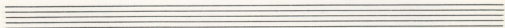
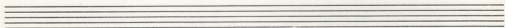
ΜΤΕΛΟΓΙΑΝΝΗΣ

ΘΕΜΑ Α

Musical score for Theme A, C/BASSO. The score consists of four staves of music. The first staff begins with a treble clef and a 3/4 time signature, followed by a 4/4 time signature. The second staff begins with a bass clef and a 3/4 time signature. The third staff begins with a bass clef and a 2/4 time signature, followed by a 3/4 time signature. The fourth staff begins with a bass clef and a 4/4 time signature, followed by a 3/4 time signature. The music is written in a single melodic line.

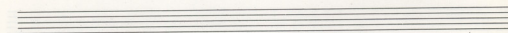
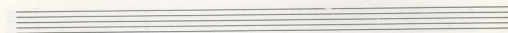
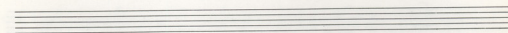
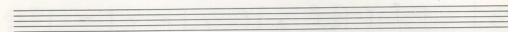
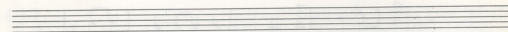
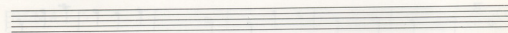
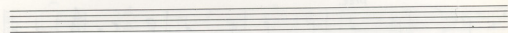
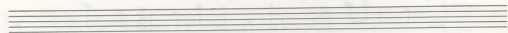
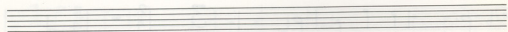
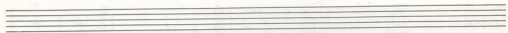
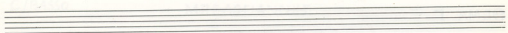
ΘΕΜΑ Β

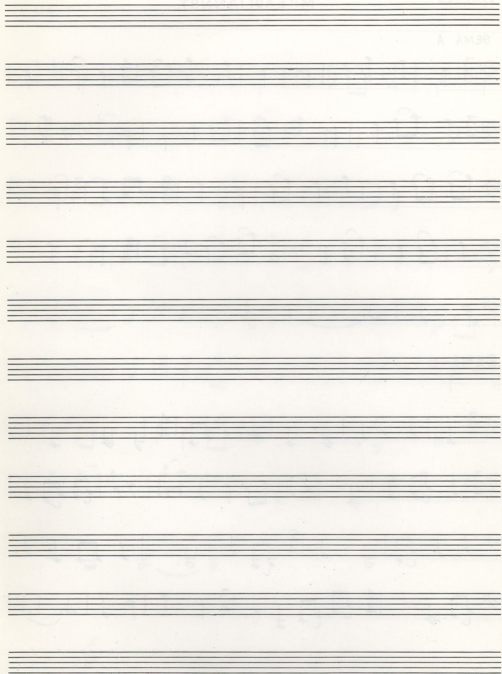
Musical score for Theme B, C/BASSO. The score consists of four staves of music. The first staff begins with a bass clef and a 3/4 time signature, followed by a 4/4 time signature. The second staff begins with a bass clef and a 3/4 time signature. The third staff begins with a bass clef and a 2/4 time signature, followed by a 3/4 time signature. The fourth staff begins with a bass clef and a 4/4 time signature, followed by a 3/4 time signature. The music is written in a single melodic line.



## ΘΕΜΑ Γ

Handwritten musical score for 'ΘΕΜΑ Γ'. The score consists of ten staves of music. The first staff is a treble clef with a 3/4 time signature. The second staff is a bass clef with a 3/4 time signature. The third staff is a bass clef with a 3/4 time signature. The fourth staff is a bass clef with a 3/4 time signature. The fifth staff is a bass clef with a 3/4 time signature. The sixth staff is a bass clef with a 4/4 time signature. The seventh staff is a bass clef with a 3/4 time signature. The eighth staff is a bass clef with a 3/4 time signature. The ninth staff is a bass clef with a 3/4 time signature. The tenth staff is a bass clef with a 3/4 time signature. The music is written in a single system with various time signatures and clefs.





V/CELLO

ΜΠΕΛΟΓΙΑΝΝΗΣ

ΘΕΜΑ Α

Musical score for Theme A, Cello part. The score consists of five staves of music. The first staff begins with a 3/4 time signature, followed by a 4/4 time signature. The second staff continues with a 3/4 time signature. The third staff features a 2/4 time signature, followed by a 3/4 time signature. The fourth staff continues with a 4/4 time signature, followed by a 3/4 time signature. The fifth staff concludes the theme with a double bar line.

ΘΕΜΑ Β

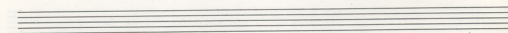
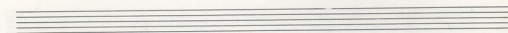
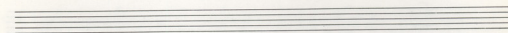
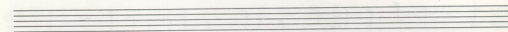
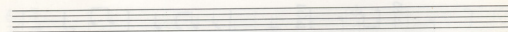
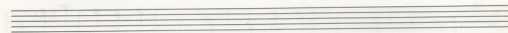
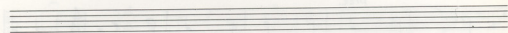
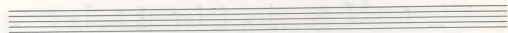
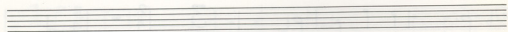
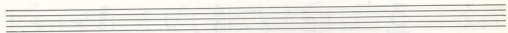
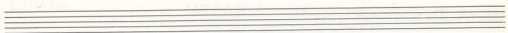
Musical score for Theme B, Cello part. The score consists of four staves of music. The first staff begins with a 3/4 time signature, followed by a 4/4 time signature. The second staff continues with a 3/4 time signature. The third staff features a 2/4 time signature. The fourth staff continues with a 4/4 time signature, followed by a 3/4 time signature. The score concludes with a double bar line.

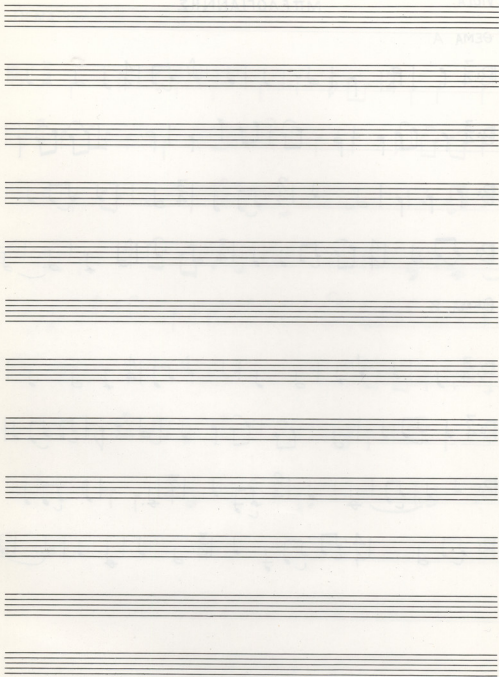


## ΘΕΜΑ Γ

Handwritten musical score for 'ΘΕΜΑ Γ'. The score consists of eight staves of music, each with a different key signature and time signature. The first staff is in B-flat major, 3/4 time. The second staff is in B-flat major, 3/4 time. The third staff is in B-flat major, 2/4 time. The fourth staff is in B-flat major, 4/4 time. The fifth staff is in B-flat major, 4/4 time. The sixth staff is in B-flat major, 3/4 time. The seventh staff is in B-flat major, 2/4 time. The eighth staff is in B-flat major, 4/4 time. The music is written in a cursive style with various note values and rests.

Three empty musical staves, each consisting of five lines, provided for additional notation.





VIOLA

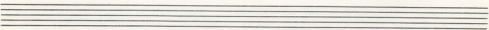
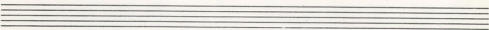
ΜΠΕΛΟΓΙΑΝΝΗΣ

ΘΕΜΑ Α

Musical score for Viola, Theme A. The score consists of four staves of music. The first staff begins with a treble clef and a 3/4 time signature, followed by a 4/4 time signature. The second staff continues with a 3/4 time signature. The third staff features a 2/4 time signature, a 3/4 time signature, and a 4/4 time signature. The fourth staff continues with a 4/4 time signature, a 3/4 time signature, and a 4/4 time signature. The music is written in a single melodic line.

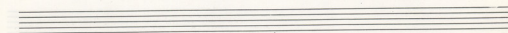
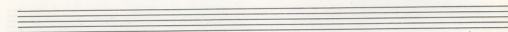
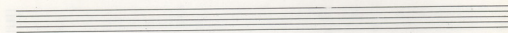
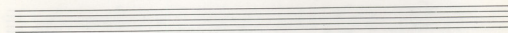
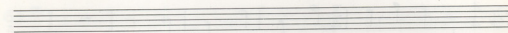
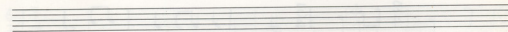
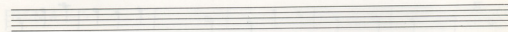
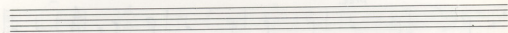
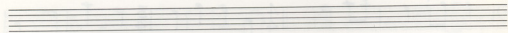
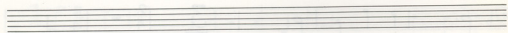
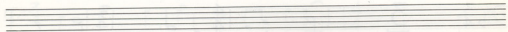
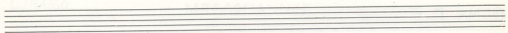
ΘΕΜΑ Β

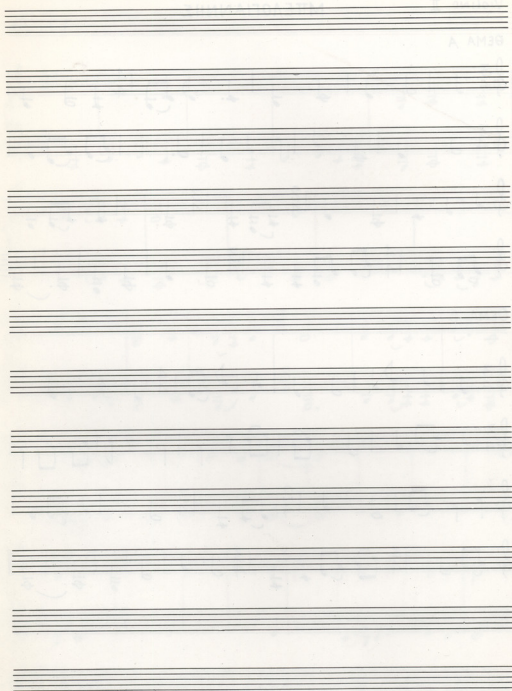
Musical score for Viola, Theme B. The score consists of four staves of music. The first staff begins with a treble clef and a 3/4 time signature, followed by a 4/4 time signature. The second staff continues with a 3/4 time signature. The third staff features a 2/4 time signature, a 3/4 time signature, and a 4/4 time signature. The fourth staff continues with a 4/4 time signature, a 3/4 time signature, and a 4/4 time signature. The music is written in a single melodic line.



THEMA I

Handwritten musical score for 'THEMA I'. The score is written on ten systems of two staves each (treble and bass clef). The key signature is one flat (B-flat). The time signature starts in 3/4 and changes to 4/4 in the first system. The notation includes various rhythmic values such as eighth, quarter, and half notes, as well as rests and accidentals. The piece concludes with a double bar line and repeat signs at the end of the final system.





Violino II

ΜΠΕΛΟΓΙΑΝΝΗΣ

ΘΕΜΑ Α

Musical score for Theme A, Violino II, by Mpelogiannis. The score consists of four staves of music. The first staff begins with a treble clef and a 3/4 time signature. The second staff continues the melody. The third staff features a key signature change to two flats (B-flat and E-flat) and a time signature change to 2/4. The fourth staff continues the piece, ending with a double bar line and repeat dots.

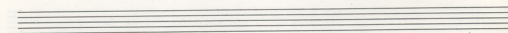
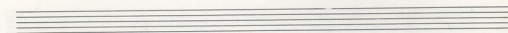
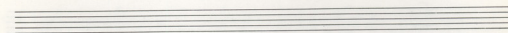
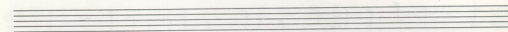
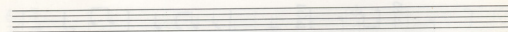
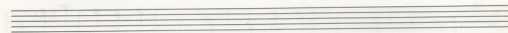
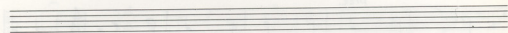
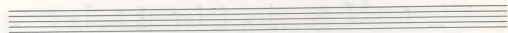
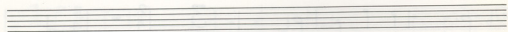
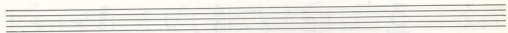
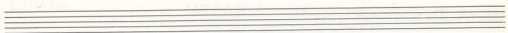
ΘΕΜΑ Β

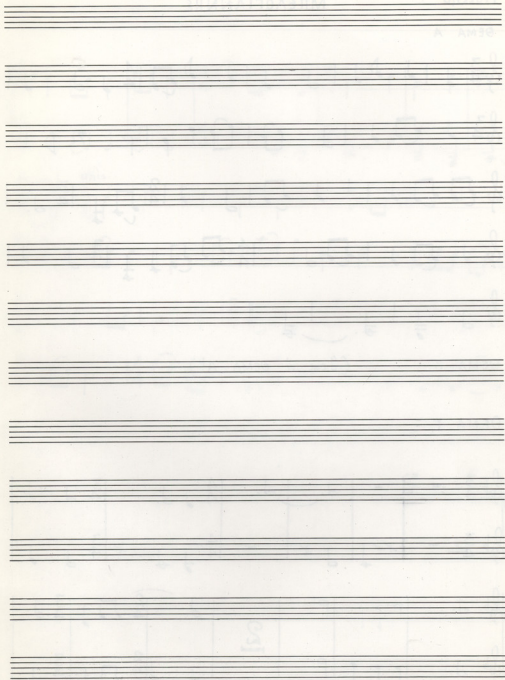
Musical score for Theme B, Violino II, by Mpelogiannis. The score consists of four staves of music. The first staff begins with a treble clef and a 3/4 time signature. The second staff continues the melody. The third staff features a key signature change to two flats and a time signature change to 2/4. The fourth staff continues the piece, ending with a double bar line and repeat dots.

Two empty musical staves, each consisting of five horizontal lines, located at the bottom of the page.



Handwritten musical score on page 23, featuring six staves of music. The notation includes various time signatures (4/4, 3/4, 2/4, 3/4, 4/4) and a marking "unis." above the third staff. The music is written in a single melodic line on a grand staff.





Violino I

ΜΠΕΛΟΓΙΑΝΝΗΣ

ΘΕΜΑ Α

Handwritten musical score for Violino I, Theme A. It consists of five staves of music in treble clef. The first staff starts in 3/4 time and changes to 4/4. The second staff continues in 4/4. The third staff changes to 2/4 and then 3/4. The fourth staff changes to 4/4 and then 3/4. The fifth staff ends with a double bar line.

ΘΕΜΑ Β

(όμοιος με ΘΕΜΑ Α!)

ΘΕΜΑ Γ

Handwritten musical score for Violino I, Theme C. It consists of two systems of piano accompaniment. The first system has two staves (treble and bass clef) with time signatures 3/4, 4/4, and 3/4. The second system also has two staves with time signatures 2/4 and 3/4. A circled number '21' is written in the middle of the second system.