

ΜΙΚΗΣ ΕΒΔΟΜΑΗΣ

ΛΕΙΤΟΥΡΓΙΑ

ΓΙΑ ΤΑ ΠΑΙΔΙΑ ΠΟΥ ΣΚΟΤΕΝΟΝΤΑΙ ΣΤΟΝ ΠΟΛΕΜΟ

(ΠΡΟΣ ΤΑΣ ΑΓΙΟΘΙΤΗΣ -  
ΜΙΚΗΣ ΕΒΔΟΜΑΗΣ)

ΓΙΑ ΠΑΙΔΙΚΗ ΧΟΡΕΔΙΑ Α. CAPELLA

MIKHIS THEODOTAKIS

# ΛΕΙΤΟΥΡΓΙΑ

ΓΙΑ ΤΑ ΠΑΙΔΙΑ ΤΩΝ ΕΚΑΤΟΝΗΝΤΑ ΣΤΩΝ ΠΟΛΕΜΩ  
(ΠΡΩΤΑ ΤΑΡΑΞΕΥΑΔΕΙΣ ΚΑΙ ΜΙΚΗΣ ΘΕΟΔΩΤΑΚΗΣ)

ΤΑ ΜΕΡΗ

- ① ΕΣΠΕΡΙΝΟΣ
- ② ΧΕΡΩΒΙΚΑ ΣΤ' ΑΔΕΡΦΙΑ ΤΗΣ ΒΡΑΧΗΣ
- ③ Η ΠΡΟΣΕΥΧΗ ΤΩΝ ΑΓΕΡΑ
- ④ ΨΑΛΜΟΣ ΓΙΑ ΤΗΝ ΑΓΙΑ ΠΟΛΙΤΕΙΑ
- ⑤ Ο ΑΓΙΟΣ ΤΣΕ
- ⑥ ΨΑΛΜΟΣ ΓΙΑ ΤΟΝ ΑΓΙΟ ΜΟΥΣΙΚΟ
- ⑦ ANNA ΠΡΑΝΚ - ΙΜΠΡΑΝ - ΕΜΙΛΙΑΝΟ
- ⑧ Η ΜΕΤΑ ΤΗΣ ΑΠΟΚΛΑΨΕΩΣ
- ⑨ Η ΑΓΙΑ ΜΑΝΝΑ
- ⑩ ΑΔΕΛΦΑΝΙΑ ΚΑΘΗΜΕΡΙΝΟ  
ΓΙΑ ΤΟΥΣ ΜΑΡΤΥΡΕΣ ΠΑΤΡΙΣΤΑΝΟΥ
- ⑪ GEORGIA
- ⑫ ΨΑΛΜΟΣ ΣΤΩΝ ΑΓΑΠΗ  
ΕΣΤΙΜΩΝ

To εγγραφο περιλαμβάνει ύμνους και λειτουργίες της Αγίας Βικτωρίας  
of Apleby για να ενθαρρύνει τους και να δώσει Χριστό τον Σωτήρα (Κρωτός  
Kip) ως εκδόσεις της 1983,





Handwritten musical score for Soprano, Alto, Tenor, and Bass. The score is in 2/4 time and features a key signature of one sharp (F#). The lyrics are in a non-Latin script, likely a South Asian language. The Soprano part includes a dynamic marking of *mf* and a tempo marking of *Andante*. The lyrics for the Soprano part are: "Na Bpau yu Vhu - Vauyup", "Na Bpau yu Vhu Vauyup", "Na Bpau yu Vhu Vauyup". The Alto part has lyrics: "Na - Na Bpau yu Vhu Vauyup". The Tenor part has lyrics: "va va Bpau yu Vhu Vauyup". The Bass part has lyrics: "Na Bpau yu Vhu Vauyup".

Handwritten musical score for Soprano, Alto, Tenor, and Bass. The score is in 2/4 time and features a key signature of one sharp (F#). The lyrics are in a non-Latin script. The Soprano part includes a dynamic marking of *f* and a tempo marking of *Andante*. The lyrics for the Soprano part are: "na - - - sou oka ke jia va ka. - - - va ka tau", "na sou oka ke jia va ka tau", "na sou oka ke jia va ka tau". The Alto part has lyrics: "na - - - sou sou n jia va ka - - - ka ke ka ka sou". The Tenor part has lyrics: "na sou oka - - - ka ka ka tau", "na sou oka - - - ka ka ka tau". The Bass part has lyrics: "na sou sou vi jia va ka tau", "na sou sou vi jia va ka tau".



2 XEPYBIKO ΣΥΛΛΕΨΙΑ ΤΗΣ 25

ANDANTE 2. = 18 6/8

[Andante 2 = 18]

**SOPRANI** *F forte*  
*Xm* *Sh-kar-ri-to ca-vu* *pis* *mi-kro* *Sy-pa-tis E-pa* *Xm* - - - - - *pa-ri*

**ALTI**  
*Xm* *Sh-kar-ri-to ca-vu* *pis* *mi-kro* *Sy-pa-tis E-pa* *Xm* - - - - -

**TENORI** *F forte*

**BASSI** *F forte*



**SOPRANI**  
*Shi-pa-tis E-pa, ca-vu* *Sh-kar-ri-to ca-vu* *Sh-kar-ri-to ca-vu* *Sh-kar-ri-to ca-vu* *Sh-kar-ri-to ca-vu* *Sh-kar-ri-to ca-vu* *Sh-kar-ri-to ca-vu* *Sh-kar-ri-to ca-vu*

**ALTI**  
*F* *E* - - - - - *Sh-kar-ri-to ca-vu* *Sh-kar-ri-to ca-vu* *Sh-kar-ri-to ca-vu* *Sh-kar-ri-to ca-vu* *Sh-kar-ri-to ca-vu* *Sh-kar-ri-to ca-vu* *Sh-kar-ri-to ca-vu* *Sh-kar-ri-to ca-vu*

**TENORI**  
*F* *E* - - - - - *Sh-kar-ri-to ca-vu* *Sh-kar-ri-to ca-vu* *Sh-kar-ri-to ca-vu* *Sh-kar-ri-to ca-vu* *Sh-kar-ri-to ca-vu* *Sh-kar-ri-to ca-vu* *Sh-kar-ri-to ca-vu* *Sh-kar-ri-to ca-vu*

**BASSI**  
*F* *E* - - - - - *Sh-kar-ri-to ca-vu* *Sh-kar-ri-to ca-vu* *Sh-kar-ri-to ca-vu* *Sh-kar-ri-to ca-vu* *Sh-kar-ri-to ca-vu* *Sh-kar-ri-to ca-vu* *Sh-kar-ri-to ca-vu* *Sh-kar-ri-to ca-vu*

Soprano (Sopr.)  $2/8$   $4/8$   $6/8$   $8/8$

Alt (Alt.)  $2/8$   $4/8$   $6/8$   $8/8$

Tenore (Ten.)  $2/8$   $4/8$   $6/8$   $8/8$

Basso (Bass)  $2/8$   $4/8$   $6/8$   $8/8$

E - hupis pa pa a kai Xa eoi Tpo pa An epe vna To ai-  
 Faou

Soprano (Sopr.)  $2/8$   $5/8$   $8/8$   $8/8$   $8/8$   $8/8$

Alt (Alt.)  $2/8$   $5/8$   $8/8$   $8/8$   $8/8$   $8/8$

Tenore (Ten.)  $2/8$   $5/8$   $8/8$   $8/8$   $8/8$   $8/8$

Basso (Bass)  $2/8$   $5/8$   $8/8$   $8/8$   $8/8$   $8/8$

Sia - kai tu pa kai fa vai - Xa te va pa vna tou pa tis - - - Xa  
 pa eoi kai An eoi Sia - kai tu pa kai eoi va - Xa te - va  
 pa eoi kai An eoi Sia - kai tu pa tu pa fa vou fa vou  
 pa eoi kai An eoi Sia - kai tu pa tu pa fa va fa va



(3)

**Soprano (A)**  
 he - va - ge vai - ge - va - ge vai - ge - va - ge

**Alto**  
 je - va - ge vai - ge vai - ge vai - ge

**Tenore**  
 tu - pa - ge - va - ge tu - pa - ge - va - ge

*Solo - senza voce*  
 X... X... X... X...  
 F cant

**Soprano (B)**  
 he va - ge vai - ge - va - ge vai - ge - va - ge

**Alto**  
 je - va - ge vai - ge vai - ge vai - ge

**Tenore**  
 tu - pa - ge - va - ge tu - pa - ge - va - ge

**Basso**  
 tu - pa - ge - va - ge tu - pa - ge - va - ge



40

Soprano: Mi - - - - - ken Sep - - - - - tis - - - - - Pa - - - - - tris - - - - - Pa - - - - - tris

Alt: Mi ken Sep - - - - - tis Pa - - - - - tris Pa - - - - - tris Pa - - - - - tris

Ten: Mi - - - - - ken Sep - - - - - tis Pa - - - - - tris Pa - - - - - tris

Soprano: Sep - - - - - tis Pa - - - - - tris Pa - - - - - tris Pa - - - - - tris Pa - - - - - tris Pa - - - - - tris

Alt: Sep - - - - - tis Pa - - - - - tris Pa - - - - - tris Pa - - - - - tris Pa - - - - - tris Pa - - - - - tris

Ten: Sep - - - - - tis Pa - - - - - tris Pa - - - - - tris Pa - - - - - tris Pa - - - - - tris Pa - - - - - tris

Bass: Sep - - - - - tis Pa - - - - - tris Pa - - - - - tris Pa - - - - - tris Pa - - - - - tris Pa - - - - - tris

SOP *6/8* *8/8* *8/8* *8/8*  
 Xis - - - - - Xis - - - - - Xis - - - - - Xis - - - - -  
 Xis - - - - - Xis - - - - - Xis - - - - - Xis - - - - -

ALTO *6/8* *8/8* *8/8* *8/8*  
 Xis - - - - - Xis - - - - - Xis - - - - - Xis - - - - -  
 Xis - - - - - Xis - - - - - Xis - - - - - Xis - - - - -

TENOR *6/8* *8/8* *8/8* *8/8*  
 Xis - - - - - Xis - - - - - Xis - - - - - Xis - - - - -  
 Xis - - - - - Xis - - - - - Xis - - - - - Xis - - - - -

SOP *6/8* *8/8* *8/8* *8/8*  
 Ho - - - - - Ho - - - - - Ho - - - - - Ho - - - - -  
 Ho - - - - - Ho - - - - - Ho - - - - - Ho - - - - -

ALTO *6/8* *8/8* *8/8* *8/8*  
 Ho - - - - - Ho - - - - - Ho - - - - - Ho - - - - -  
 Ho - - - - - Ho - - - - - Ho - - - - - Ho - - - - -

TENOR *6/8* *8/8* *8/8* *8/8*  
 Ho - - - - - Ho - - - - - Ho - - - - - Ho - - - - -  
 Ho - - - - - Ho - - - - - Ho - - - - - Ho - - - - -

BASS *6/8* *8/8* *8/8* *8/8*  
 Ho - - - - - Ho - - - - - Ho - - - - - Ho - - - - -  
 Ho - - - - - Ho - - - - - Ho - - - - - Ho - - - - -

50

Et qui de patre genuit se cum deo  
 Et qui de patre genuit se cum deo  
 Et qui de patre genuit se cum deo

Veni propter nos homines  
 Veni propter nos homines  
 Veni propter nos homines  
 Veni propter nos homines

propter nos homines et propter nos homines  
 propter nos homines et propter nos homines  
 propter nos homines et propter nos homines  
 propter nos homines et propter nos homines



Soprano (SOP) part with lyrics: *En - tera re Xpi cris -*

Alto (ALT) part with lyrics: *En - tera re Xpi cris -*

Tenore (TEN) part with lyrics: *En - tera re Xpi cris -*

Soprano (SOP) part with lyrics: *na re fa - cil - ia -*

Alto (ALT) part with lyrics: *na re fa - cil - ia -*

Tenore (TEN) part with lyrics: *na re fa - cil - ia -*

Basso (BAS) part with lyrics: *na re fa - cil - ia -*

Go

SOP *Xa . . . . . pe - va te va - va - va . . . . . pe - va . . . . .*

ALT *Xa . . . . . pe - va te - va - va - va . . . . . pe - va . . . . .*

TEH *va - va - va - va . . . . . Xa pe va te va - va - va . . . . .*

SOP *Sing . . . . . Xa pe - va va Xa - va - va pe*

ALT *Sing . . . . . Xa pe - va va Xa - va - va pe*

TEH *Sing . . . . . Xa pe - va va Xa - va - va pe*

BAS *Sing . . . . . Xa pe - va va Xa - va - va pe*



Handwritten musical score for three staves. The top staff is a vocal line with lyrics: "Tra... per las... Tra... per las... Tra...". The middle staff is a piano accompaniment with lyrics: "Tra per las tra per las tra per las tra per las tra per las". The bottom staff is a piano accompaniment with lyrics: "Tra per las... tra per las tra per las tra per las tra per las". The score is marked with a key signature of one sharp (F#) and a common time signature (C). A fermata is present over the final measure of each staff.

Handwritten musical score for four staves. The top staff is a vocal line with lyrics: "tra per las... tra per las tra per las tra per las tra per las". The middle three staves are piano accompaniment with lyrics: "tra per las... tra per las tra per las tra per las tra per las". The score is marked with a key signature of one sharp (F#) and a common time signature (C). A fermata is present over the final measure of each staff.

Alman.  
S. VI 82



Soprano

di - | di - | >  $\frac{1}{2}$  |  
 mi - | ve - | mi - | pp -  
 ti - | fa - | mi - | me -  
 ja - | xa - | mi - | H -

Alti

di - | di - | > |  
 mi - ve - fa - ve - | mi - | mi - | pp  
 ti - ve - ve - ve - ve - | mi - | mi - |  
 ja - ve - ve - ve - ve - | mi - | mi - |

Tenore

di - | di - | > |  
 mi - | ve - ve - | mi - | pp  
 ti - | ve - ve - | mi - |  
 ja - | ve - ve - | mi - |

Basso

di - | di - | > |  
 mi - | ve - ve - | mi - | pp  
 ti - | ve - ve - | mi - |  
 ja - | ve - ve - | mi - |

SPANISH  
 S. H. 11

4 VAMOS FIATUM ANA DONATEIA

LARGHETTO  $\text{♩} = 63$

SOPRANI I  $\text{♩} \frac{12}{8}$

8

A. SOPRANI II  $\text{♩} \frac{12}{8}$

8

ALTI  $\text{♩} \frac{12}{8}$

8

TENORI I  $\text{♩} \frac{12}{8}$

8

B. TENORI II  $\text{♩} \frac{12}{8}$

8

TENORI III  $\text{♩} \frac{12}{8}$

8

SOPRANI  $\text{♩} \frac{12}{8}$   $\text{♩} \rightarrow$

8

C. ALTI  $\text{♩} \frac{12}{8}$   $\text{♩} \rightarrow$

8

12

8

TENORI  $\text{♩} \frac{12}{8}$   $\text{♩} \rightarrow$

8

BASSI  $\text{♩} \frac{12}{8}$   $\text{♩} \rightarrow$

8

*legno*  
p. Na-ti-vi-ta-tem  
e-ge-ni-um  
90-phi-ta-mi-90-phi-90-phi

*legno*  
p. Na-ti-vi-ta-tem  
e-ge-ni-um  
90-phi-ta-mi-90-phi-90-phi

*legno*  
p. Na-ti-vi-ta-tem  
e-ge-ni-um  
90-phi-ta-mi-90-phi-90-phi

(A)

Musical score for part (A) consisting of three staves. The top staff contains a melodic line with notes and rests. The middle and bottom staves contain rhythmic accompaniment. The tempo marking *f* *con moto* is written above the first staff. The lyrics "Dei-je-ru-sa-lem" are written below the bottom staff.

(B)

Musical score for part (B) consisting of three empty staves.

(C)

Musical score for part (C) consisting of five staves. The first staff has a melodic line with lyrics "Dei-je-ru-sa-lem". The second staff has a melodic line with lyrics "Dei-je-ru-sa-lem". The third staff has a melodic line with lyrics "Dei-je-ru-sa-lem". The fourth staff has a melodic line with lyrics "Dei-je-ru-sa-lem". The fifth staff has a melodic line with lyrics "Dei-je-ru-sa-lem". The tempo marking *f* *con moto* is written above the first staff. The lyrics "Dei-je-ru-sa-lem" are written below the bottom staff.

2.

1 Sop  
 2 Sop  
 Alt

10

No. 1. 26. 27. 28. 29. 30. 31. 32.

rit.

*(Musical notation for Soprano and Alto parts, including lyrics and performance markings like 'rit.') and a circled number '10' above the staff.)*

1 Ten  
 2 Ten  
 3 Ten

F

*(Musical notation for Tenor parts, including lyrics and performance markings like 'F' and 'rit.') and a circled number '10' above the staff.)*

Sop  
 Alt  
 Ten  
 Bass

*(Musical notation for Soprano, Alto, Tenor, and Bass parts, including lyrics and performance markings like 'rit.' and 'f').*

Allegro Spi. pas. op. Xvi of J. J. fff

*f* *A.*

*f* *mf*

*f* *mf*







1 Soprano  
A) 2 Soprano  
Alto

- two più  
H e e g e S e X e e e

1 Tenor  
B) 2 Tenor  
3 Tenor

- #g  
- #g  
- #g  
- #g  
- #g  
- #g

Al  
ta  
era  
-  
fa

Soprano  
Alto  
C) Tenor  
Bass

più re  
re-ve fe  
re-ve fe  
re-ve fe  
re-ve fe  
re-ve fe

re-ve fe  
re-ve fe  
re-ve fe  
re-ve fe  
re-ve fe  
re-ve fe

re-ve fe  
re-ve fe  
re-ve fe  
re-ve fe  
re-ve fe  
re-ve fe

re-ve fe  
re-ve fe  
re-ve fe  
re-ve fe  
re-ve fe  
re-ve fe

30

Musical notation for three voices (Soprano, Alto, Tenor) with lyrics: Ma bu ang ma kau po

Soprano: Ma bu ang ma kau po  
 Alto: Ma bu ang ma kau po  
 Tenor: Ma bu ang ma kau po

Musical notation for three voices with lyrics: Me ve fe - - - - - Ma

Soprano: Me ve fe - - - - - Ma  
 Alto: Me ve fe - - - - - Ma  
 Tenor: Me ve fe - - - - - Ma

Musical notation for three voices with lyrics: kau po ve fe - - - - - Ma

Soprano: kau po ve fe - - - - - Ma  
 Alto: kau po ve fe - - - - - Ma  
 Tenor: kau po ve fe - - - - - Ma

Soprano  
 a) Soprano  
 Soprano

Kpa tuu ro pu ori

Tenor  
 b) Tenor  
 Tenor

Mu. pu ran tuu - tuu ka-pi

Soprano  
 Alto  
 c) Tenor  
 Bass

= vaxo piis pa... pu tuis... ka pu tag via tuu pa... kpa... tuu  
 = vaxo pa... ka... pu tag... ka pu tag... via tuu pu...  
 = vaxo pa... ka... pu ran... pa pu tuu pa... pu... pu... pu...  
 pu... pu... pu... pu... pu... pu... pu... pu... pu... pu...



Sopranos (Sopr.)  
 Alto (Alto)  
 Tenors (Tenor)  
 Basses (Bass)

B) TENOR

1. *rit.* *rit.* *rit.* *rit.* *rit.* *rit.*

2. *rit.* *rit.* *rit.* *rit.* *rit.* *rit.*

3. *rit.* *rit.* *rit.* *rit.* *rit.* *rit.*

C)

Soprano (Sopr.)

Alto (Alto)

Tenor (Tenor)

Bass (Bass)

*rit.*

BRUNNEN  
K. 1. 1. 1.









3/4 - 2/4 2/4

Soprano: *Si xhi ou pa vis Se te pou Tad. nou nou youi vout ou oup*

Alto: *ou pa vis ou pa vis ou pa vis ou pa vis ou pa vis ou pa vis*

Tenore: *ou pa vis Se - - pou Tad nou nou youi - vout ou oup*

Basso: *ou pa vis Se Se pou tad nou nou youi vout ou oup*

3/4 2/4 3/4

Soprano: *Au Se pou ras tis ne pas au de pas ou - i Pa.*

Alto: *Au Se pou Tad tis tis tis tis au tis no - va*

Tenore: *Ta Se pou Se pou ras tis ne pas au tis no va i Pa.*

Basso: *Au Se pou ras Se pou ras Se pou ras tis ne pas au tis no va i*

Soprano: *paus se gu rad se gu rad*  
Alto: *o. Bo. paus se*  
Tenor: *paus Bo. paus se cu rad*  
Bass: *o Bo. paus se se se se pa rad*

2/4 3/4 2/4 3/4

Soprano: *no xy na pa se no pa se no pa se no pa se no pa se*  
Alto: *no xy na pa se no pa se no pa se no pa se no pa se*  
Tenor: *no xy na pa se no pa se no pa se no pa se no pa se*  
Bass: *no xy na pa se no pa se no pa se no pa se no pa se*

⑤ O ARIOS TSE

♩ = 69

⑤

SOPRANI I  $8^{va}$

SOPRANI II  $8^{va}$

ALTI  $8^{va}$

SOLA TROMBA  $8^{va}$

TROMBE  $9^a$

BASSI I  $8^{va}$

BASSI II  $8^{va}$

Tutti tutti

Solo TTB. Tromba Solo TTB. Tromba

ag

Tre. Tre.

Organo

ppp Tre

ppp Tre

10

Handwritten musical score for measures 10-14. The score includes parts for Soprano I, Soprano II, Alto, Solo Tenor, Tenor, Bass I, and Bass II. The key signature is two sharps (F# and C#), and the time signature is 4/4. The tempo is marked 'Allegro' with a quarter note equal to 120 beats per minute. Measure 10 features a dynamic marking of 'F' (forte) and a 'Zurück' (back) instruction. The vocal parts have lyrics in German, and the instrumental parts show complex rhythmic patterns.

15

Handwritten musical score for measures 15-19. The score includes parts for Soprano I, Soprano II, Alto, Tenor, Bass I, and Bass II. The key signature is two sharps (F# and C#), and the time signature is 4/4. The tempo is marked 'Allegro' with a quarter note equal to 120 beats per minute. Measure 15 features a dynamic marking of 'mf' (mezzo-forte) and a 'Zurück' (back) instruction. The vocal parts have lyrics in German, and the instrumental parts show complex rhythmic patterns.

24

25

Soprano I  
Kai qeie fua ei oave Tau fi. fua fua fua Tau nau. Sia - kai fua fua fua

Soprano II  
Kai qeie fua fua fua ei fua fua fua fua fua fua fua fua Tau nau. Sia fua fua fua fua

ALT  
fua fua fua fua fua fua fua fua fua fua fua fua fua fua fua fua fua fua

TEN  
fua fua fua fua fua fua fua fua fua fua fua fua fua fua fua fua fua fua

BASS I  
fua fua fua fua fua fua fua fua fua fua fua fua fua fua fua fua fua fua

BASS II  
fua fua fua fua fua fua fua fua fua fua fua fua fua fua fua fua fua fua

26

Soprano I  
au fua fua fua fua fua fua fua fua fua fua fua fua fua fua fua fua fua fua

Soprano II  
fua fua fua fua fua fua fua fua fua fua fua fua fua fua fua fua fua fua

ALT  
fua fua fua fua fua fua fua fua fua fua fua fua fua fua fua fua fua fua

TEN  
fua fua fua fua fua fua fua fua fua fua fua fua fua fua fua fua fua fua

BASS I  
fua fua fua fua fua fua fua fua fua fua fua fua fua fua fua fua fua fua

BASS II  
fua fua fua fua fua fua fua fua fua fua fua fua fua fua fua fua fua fua

Handwritten musical score for Soprano I, Soprano II, Alto, Tenor, and Bass I & II. The score includes lyrics in Indonesian and musical notation with notes and rests.

**Soprano I:** A p'airah lau te pin' k'at k'amp'at' k'at p'at' pin - a'ya

**Soprano II:** A pin' k'at k'at k'at pin' k'at k'at k'at k'at k'at k'at k'at k'at

**Alto:** Musical notation with notes and rests.

**Tenor:** Musical notation with notes and rests.

**Bass I & II:** Musical notation with notes and rests.

Handwritten musical score for Soprano I, Soprano II, Alto, Tenor, and Bass I & II. The score includes lyrics in Indonesian and musical notation with notes and rests.

**Soprano I:** Tin' Tin' tin' k'at tin' tin' Tin' tin' Tin' tin' Tin' tin'

**Soprano II:** Tin' Tin' Tin' Tin' Tin' Tin' Tin' Tin' Tin' Tin'

**Alto:** Musical notation with notes and rests.

**Tenor:** Musical notation with notes and rests.

**Bass I & II:** Musical notation with notes and rests.





VAMOS  
 NA TON ARIO  
 MOVIMENTO

(6)

(5)

SOPRANI

ALTI

TENORI

BASSI

$\text{♩} = 48$

$\text{♩} = 48$

$\text{♩} = 48$

$\text{♩} = 48$

$\text{♩} = 48$

$\text{♩} = 48$

$\text{♩} = 48$

$\text{♩} = 48$

$\text{♩} = 48$

$\text{♩} = 48$

$\text{♩} = 48$

$\text{♩} = 48$

$\text{♩} = 48$

$\text{♩} = 48$

$\text{♩} = 48$

Musical notation for Soprano, Alto, Tenor, and Bass parts, measures 6-10. Includes lyrics and musical symbols.

Musical notation for Soprano, Alto, Tenor, and Bass parts, measures 11-15. Includes lyrics and musical symbols.

Musical notation for Soprano, Alto, Tenor, and Bass parts, measures 16-20. Includes lyrics and musical symbols.

Musical notation for Soprano, Alto, Tenor, and Bass parts, measures 21-25. Includes lyrics and musical symbols.



① ANNA PANK - IMPERIAL - EMILIANO

Adagio 2 = 56

SOLO SOPRANO  
 F A. - - - Ar. va Pura  
 Au - - - va - - - Au - - - va Pura Impetuo Indefin

BASSI (CITT.)  
 PPP Au va Au

Soprano Solo  
 F. pa in co  
 eppa. y. eppa piffessompa  
 Au - - - va Au - - - va

ALTO SOLO  
 F  
 Ip. - - - Ip. - - -

ALTI  
 PPP  
 Ip. - - - nca.

TEN  
 PPP  
 Ip. - - - nca.

BAS  
 vna  
 PPP  
 Ip. - - - nca.



Handwritten musical score for Soprano, Alto, Tenor, and Bass. The score includes vocal lines with lyrics and piano accompaniment.

**Soprano (Sopr. S2a):** Part of a duet with the Alto. Lyrics: "AN. NA. E. MI. AIA. NO".

**Alto (Alto S2a):** Part of a duet with the Soprano. Lyrics: "AN. NA. E. MI. AIA. NO".

**Tenor (Ten):** Part of a duet with the Bass. Lyrics: "E. profusus E. profusus".

**Bass (Bas.):** Part of a duet with the Tenor. Lyrics: "E. profusus E. profusus".

**Instrumental:** The piano accompaniment features a melodic line with slurs and dynamic markings such as *p* (piano) and *f* (forte).

**Performance Markings:** The score includes dynamic markings (*p*, *f*), slurs, and a "Tutti" marking. There are also some handwritten annotations and corrections throughout the score.

Handwritten musical score for SATB choir and Bass. The score is written on ten staves. The SATB parts are grouped together, and the Bass part is on a separate staff at the bottom. The music is in a key with one flat (B-flat major or D minor) and a 4/4 time signature. The SATB parts have lyrics written below them. The Bass part has lyrics and dynamic markings (P, F, sf, P) written below it. There are several measures of music, with some measures containing rests or specific notes. The score is written in ink on aged paper.

**SATB**

1 Soprano 1: *h g f*

2 Soprano 2: *a f f*

3 Alto 1: *g f f*

4 Alto 2: *g f f*

*im. nra. HM*

**ALT**

1 Alto 1: *h f d*

2 Alto 2: *d d d*

**TEN**

**BAS**

*Indaga... f... m... m...*

*P F sf P*

## H MEPA THS ANOKANVSES

8  $\text{♩} = 103$   
ritard.

Soprano:  $\text{♩} = 103$   
ritard.  
F Mupit pa Gu ero qupim- te pa Mupit pa Gu ero qupim- te pa

Alto:  $\text{♩} = 103$   
ritard.  
F Mupit pa Gu ero qupim- te Mupit pa Gu ero qupim- te

Tenore:  $\text{♩} = 103$   
ritard.  
F Mupit pa Gu ero qupim- te Mupit pa Gu ero qupim- te

Basso:  $\text{♩} = 103$   
Solo  
F Mupit pa Gu ero qupim- te pa Mupit pa Gu ero qupim- te pa TUTT

Piano:  $\text{♩} = 103$   
ritard.  
F Mupit pa Gu ero qupim- te pa

5

Soprano:  $\text{♩} = 103$   
Mupit pa Gu ero qupim- te pa Mupit pa Gu ero qupim- te pa

Alto:  $\text{♩} = 103$   
Mupit pa Gu ero qupim- te Mupit pa Gu ero qupim- te

Tenore:  $\text{♩} = 103$   
Mupit pa Gu ero qupim- te Mupit pa Gu ero qupim- te

Basso:  $\text{♩} = 103$   
Cantabile o ritard.  
Solo  
F Mupit pa Gu ero qupim- te pa Mupit pa Gu ero qupim- te pa TUTT

Basso:  $\text{♩} = 103$   
Mupit pa Gu ero qupim- te pa







9

SOP *And.* in - va - va in ka - pa - tag - = in - va - va in ka - pa - tag -

ALT *And.* in - va - va in ka - pa - tag - va in - va - va in ka - pa - tag - va

TEN *And.* in - va - va in ka - pa - tag - va in - va - va in ka - pa - tag - va

BAR *And.* in - va - va in ka - pa - tag - =

BAS *And.* in - va - va in ka - pa - tag - va in - va - va in ka - pa - tag - va

30

SOP *And.* in - va - va in ka - pa - tag - = *And.* in - va - va in ka - pa - tag - =

ALT *And.* in - va - va in ka - pa - tag - va in - va - va in ka - pa - tag - va

TEN *And.* in - va - va in ka - pa - tag - va in - va - va in ka - pa - tag - va

BAR *And.* in - va - va in ka - pa - tag - =

BAS *And.* in - va - va in ka - pa - tag - va in - va - va in ka - pa - tag - va

35

SOP *And - te vas va* *Ma del tuo* *And - te vas va* *Ma del tuo*

ALT *And te vas va* *Ma del tuo* *And te vas va* *Ma del tuo*

TEN *And* *Ma del tuo* *And* *Ma del tuo*

BAR *And te vas va* *Ma del tuo* *And te vas va* *Ma del tuo*

BAS *And te vas va* *Ma del tuo* *And te vas va* *Ma del tuo*

36

SOP *And - te vas va* *Ma del tuo* *And - te vas va* *Ma del tuo*

ALT *And te vas va* *Ma del tuo* *And te vas va* *Ma del tuo*

TEN *And te vas va* *Ma del tuo* *And te vas va* *Ma del tuo*

BAR *And - te vas va* *Ma del tuo*

BAS *And te vas va* *Ma del tuo*

Handwritten musical score for Soprano (SOP), Alto (ALT), Tenor (TEN), and Bass (BASS). The score is written on four staves. The lyrics are: "New - re re new re - re : New - re re new re - re". The music is in 4/4 time and features a melodic line with some chromaticism. The bass part includes a double bar line with the instruction "(unus)".

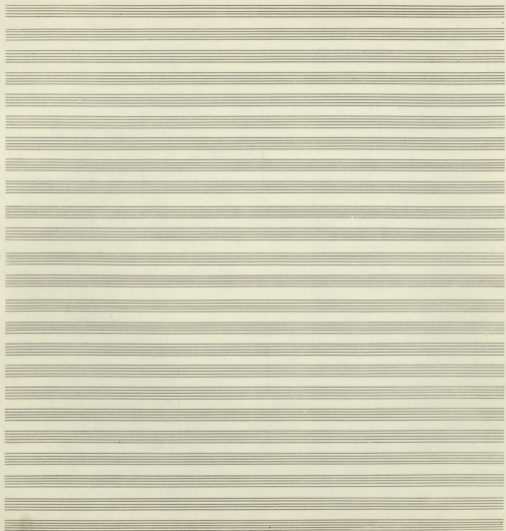
SOP  
ALT  
TEN  
BASS  
(unus)

Handwritten musical score for Soprano (SOP), Alto (ALT), Tenor (TEN), and Bass (BASS). The score is written on four staves. The lyrics are: "New - re re new re - re". The music is in 4/4 time and features a melodic line with some chromaticism. The bass part includes a double bar line with the instruction "(unus)".

SOP  
ALT  
TEN  
BASS

45

*p* *ff* *pp*



## 9 H ANIA MANNA

ADAGIO 4=60

SOBRANI  $\text{mf}$   $\text{p}$   $\text{p}$

f Tuu zo. opa Spa pa. opa vo vi kapa em em opa pa pa opa

ALTI  $\text{mf}$   $\text{p}$   $\text{p}$

no ko. ipo vi kapa em em opa pa opa

TENORI  $\text{mf}$   $\text{p}$   $\text{p}$

ka. Spa vi kapa em em opa pa opa

BASSI  $\text{mf}$   $\text{p}$   $\text{p}$

ko Spa. p voi kapa em em opa pa opa

SOBRANI  $\text{mf}$   $\text{mf}$

va vi Taf vix yay opa Sia ksy em opa tra ki. xuv. Kori

ALTI  $\text{mf}$   $\text{mf}$

va vi va xang opa Sia em opa tra  $\text{mf}$  vuv

TENORI  $\text{mf}$   $\text{mf}$

va vi va xang opa Sia em opa tra vuv

BASSI  $\text{mf}$   $\text{mf}$

va vi va xang opa Sia em opa tra  $\text{mf}$  vuv

75 *p* *p* *f*

SOP *3*  
 Sopra *3*  
 no ve quon ha ha tuu si arpa Sapia. Ami no ve

ALT *3*  
 Alto *3*  
 no ve quon ha ha tuu si

TEN *3*  
 Tenor *3*  
 no ve quon ha ha tuu si

BAS *3*  
 Bass *3*  
 no ve quon ha ha tuu si

*p* *p* *f*

*f* *p* 75 *f* *p*

SOP *2*  
 Sopra *2*  
 Ba dia ephe noxur. Siel ni mi ty du Ba Sog noxur pivi pivi

ALT *2*  
 Alto *2*  
 Ba dia ephe noxur. Siel ni mi ty du Ba Sog noxur pivi pivi

TEN *2*  
 Tenor *2*  
 Ba dia ephe noxur. Siel ni mi ty du Ba Sog noxur pivi pivi

BAS *2*  
 Bass *2*  
 Ba dia ephe noxur. Siel ni mi ty du Ba Sog noxur pivi pivi

*f* *p*

pp *mf*

Soprano: pau re xte ym xte ym  
 Alto: xte ym xte ym  
 Tenor: xte ym xte ym  
 Bass: xte ym xte ym

Dynamics: pp, mf, sf, F

35 P *mf*

Soprano: pau re xte ym xte ym  
 Alto: xte ym xte ym  
 Tenor: xte ym xte ym  
 Bass: xte ym xte ym

Dynamics: P, mf







Soprano (Sopr.)

Alto I (Alto I)

Alto II (Alto II)

Tenore I (Tenore I)

Tenore II (Tenore II)

Basso (Basso)

Handwritten musical score with lyrics in Italian. The lyrics are: *Ma non so che cosa farò, non so che cosa farò, non so che cosa farò, non so che cosa farò, non so che cosa farò, non so che cosa farò.*

(20)

Sopranos: *pa - ra ser oír* *de - a* *que ex - ce - lso* *que ex - ce - lso* *que ex - ce - lso* *que ex - ce - lso* *que ex - ce - lso* *que ex - ce - lso*  
 Altos: *pa - ra ser oír* *de - a* *que ex - ce - lso* *que ex - ce - lso* *que ex - ce - lso* *que ex - ce - lso* *que ex - ce - lso* *que ex - ce - lso*  
 Tenors: *pa - ra ser oír* *de - a* *que ex - ce - lso* *que ex - ce - lso* *que ex - ce - lso* *que ex - ce - lso* *que ex - ce - lso* *que ex - ce - lso*  
 Basses: *pa - ra ser oír* *de - a* *que ex - ce - lso* *que ex - ce - lso* *que ex - ce - lso* *que ex - ce - lso* *que ex - ce - lso* *que ex - ce - lso*  
 Contraltos: *pa - ra ser oír* *de - a* *que ex - ce - lso* *que ex - ce - lso* *que ex - ce - lso* *que ex - ce - lso* *que ex - ce - lso* *que ex - ce - lso*

*pa - ra ser oír* *de - a* *que ex - ce - lso* *que ex - ce - lso* *que ex - ce - lso* *que ex - ce - lso* *que ex - ce - lso* *que ex - ce - lso*  
*pa - ra ser oír* *de - a* *que ex - ce - lso* *que ex - ce - lso* *que ex - ce - lso* *que ex - ce - lso* *que ex - ce - lso* *que ex - ce - lso*  
*pa - ra ser oír* *de - a* *que ex - ce - lso* *que ex - ce - lso* *que ex - ce - lso* *que ex - ce - lso* *que ex - ce - lso* *que ex - ce - lso*  
*pa - ra ser oír* *de - a* *que ex - ce - lso* *que ex - ce - lso* *que ex - ce - lso* *que ex - ce - lso* *que ex - ce - lso* *que ex - ce - lso*  
*pa - ra ser oír* *de - a* *que ex - ce - lso* *que ex - ce - lso* *que ex - ce - lso* *que ex - ce - lso* *que ex - ce - lso* *que ex - ce - lso*

*pa - ra ser oír* *de - a* *que ex - ce - lso* *que ex - ce - lso* *que ex - ce - lso* *que ex - ce - lso* *que ex - ce - lso* *que ex - ce - lso*  
*pa - ra ser oír* *de - a* *que ex - ce - lso* *que ex - ce - lso* *que ex - ce - lso* *que ex - ce - lso* *que ex - ce - lso* *que ex - ce - lso*  
*pa - ra ser oír* *de - a* *que ex - ce - lso* *que ex - ce - lso* *que ex - ce - lso* *que ex - ce - lso* *que ex - ce - lso* *que ex - ce - lso*  
*pa - ra ser oír* *de - a* *que ex - ce - lso* *que ex - ce - lso* *que ex - ce - lso* *que ex - ce - lso* *que ex - ce - lso* *que ex - ce - lso*  
*pa - ra ser oír* *de - a* *que ex - ce - lso* *que ex - ce - lso* *que ex - ce - lso* *que ex - ce - lso* *que ex - ce - lso* *que ex - ce - lso*



(35)

SOP  
 Ho... Ma... Ma... Ma... Ma... Ma...  
 Ma... Ma... Ma... Ma... Ma... Ma...  
 Ma... Ma... Ma... Ma... Ma... Ma...

ALT I  
 Ho... Ma... Ma... Ma... Ma... Ma...  
 Ma... Ma... Ma... Ma... Ma... Ma...  
 Ma... Ma... Ma... Ma... Ma... Ma...

ALT II  
 Ma... Ma... Ma... Ma... Ma... Ma...  
 Ma... Ma... Ma... Ma... Ma... Ma...  
 Ma... Ma... Ma... Ma... Ma... Ma...

TEW I  
 To... Ma... Ma... Ma... Ma... Ma...  
 Ma... Ma... Ma... Ma... Ma... Ma...  
 Ma... Ma... Ma... Ma... Ma... Ma...

TEW II  
 To... Ma... Ma... Ma... Ma... Ma...  
 Ma... Ma... Ma... Ma... Ma... Ma...  
 Ma... Ma... Ma... Ma... Ma... Ma...

BAS  
 Ho... Ma... Ma... Ma... Ma... Ma...  
 Ma... Ma... Ma... Ma... Ma... Ma...  
 Ma... Ma... Ma... Ma... Ma... Ma...

35

SOP *Al. Die* *Beim Kamp* *ni* *ein* *die* *pa* *ra* *pa* *pa*  
*in der* *in der* *in* *in* *in* *in* *in* *in*

ALII *Beim Kamp* *Beim Kamp* *Al. Die* *Beim* *Al. Die* *Beim* *Al. Die* *Beim*  
*in der* *in der* *in der* *in der* *in der* *in der* *in der* *in der*

MES *Beim Kamp* *Beim Kamp* *Al. Die* *Beim* *Al. Die* *Beim* *Al. Die* *Beim*  
*in der* *in der* *in der* *in der* *in der* *in der* *in der* *in der*

TBII *Beim Kamp* *Beim Kamp* *Al. Die* *Beim* *Al. Die* *Beim* *Al. Die* *Beim*  
*in der* *in der* *in der* *in der* *in der* *in der* *in der* *in der*

TBII *Beim Kamp* *Beim Kamp* *Al. Die* *Beim* *Al. Die* *Beim* *Al. Die* *Beim*  
*in der* *in der* *in der* *in der* *in der* *in der* *in der* *in der*

BAR *Beim Kamp* *Beim Kamp* *Al. Die* *Beim* *Al. Die* *Beim* *Al. Die* *Beim*  
*in der* *in der* *in der* *in der* *in der* *in der* *in der* *in der*

DE CAP. CODA FINE

SOP

ALTO I

ALTO II

TENOR I

TENOR II

BASS

In the first system, the vocal parts are marked with a common time signature and a key signature of one sharp (F#). The lyrics are: "In te Domine speravi".  
 In the second system, the lyrics are: "In te Domine speravi".  
 In the third system, the lyrics are: "In te Domine speravi".  
 The section concludes with a double bar line and the word "FINE".



11 Gloria

2 = 76

3

I  $\text{C}^{\#} \frac{2}{4}$

Sopr

II  $\text{C}^{\#} \frac{2}{4}$

Aut  $\text{C}^{\#} \frac{2}{4}$

F *rit.*

Ten  $\text{C}^{\#} \frac{2}{4}$

Gloria - Re - A - Glo - - - - - Glo - - - - - Glo - - - - -

$\text{C}^{\#} \frac{2}{4}$

mf Glo

Glo - Re - A Glo

Handwritten musical score for Soprano I, Soprano II, Alto, Tenor, and Bass. The score is written on five systems of staves. The key signature is two sharps (F# and C#). The Soprano I part has a circled '14' above it. The Soprano II part includes dynamic markings 'mf' and 'f'. The Alto part includes dynamic markings 'f' and 'mf'. The Tenor part includes dynamic markings 'mf' and 'f'. The Bass part includes dynamic markings 'mf' and 'f'. The lyrics are written below the notes on each staff.

**Soprano I** (Circled 14)  
 Sop II  
 Alto  
 Tenor  
 Bass

Lyrics:  
 Sop II: Cant. - - - - -  
 mf nev. - - - - - TC - - - - -  
 f - - - - -  
 f - - - - -  
 mf nev. - - - - -  
 f - - - - -  
 mf nev. - - - - -  
 f - - - - -  
 mf nev. - - - - -  
 f - - - - -  
 mf nev. - - - - -  
 f - - - - -  
 mf nev. - - - - -  
 f - - - - -



20

Handwritten musical score for SATB choir with piano accompaniment. The score is written in G major and 4/4 time. It consists of six systems of staves. The vocal parts are Soprano I (Soprano I), Soprano II (Soprano II), Alto I (Alto I), Alto II (Alto II), Tenor I (Tenor I), and Tenor II (Tenor II). The piano part is on the bottom staff. The lyrics are written below the vocal staves.

**Soprano I:** ... Ri A. Gio. ... Gio. ... Gio. ... Ri A. ... VTE ... Kap. Sie

**Soprano II:** ... Gio. ... Gio. ... Gio. ... Gio. ... Ri A. Gio. ...

**Alto I:** ... Ri A. Gio. ... Gio. ... Gio. ... Ri A. ... FORTISSIMO ... NEMOTACHY ...

**Alto II:** ... Gio. ... Gio. ... Gio. ... Gio. ... Ri A. Gio. ...

**Tenor I:** ... Ri A. Gio. ... Gio. ... Gio. ... Ri A. ... A. ... VOI

**Tenor II:** ... A. ... VOI ... A. ... Gio. ... Ri A. Gio. ...

**Bass:** ... Gio. ... Gio. ... Ri A. Gio. ... Gio. ... Ri A. Gio. ...

Handwritten musical score for Soprano, Alto, Tenor, and Bass. The score is divided into two systems, with measures 25 and 30 circled at the top. The lyrics are in Latin: "Ite missa est".

**System 1 (Measures 25-30):**

- Soprano (SOPR):** Ite missa est. Ite missa est. Ite missa est. Ite missa est. Ite missa est. Ite missa est.
- Alto (ALT):** Ite missa est. Ite missa est. Ite missa est. Ite missa est. Ite missa est. Ite missa est.
- Tenor (TEN):** Ite missa est. Ite missa est. Ite missa est. Ite missa est. Ite missa est. Ite missa est.
- Bass (BAS):** Ite missa est. Ite missa est. Ite missa est. Ite missa est. Ite missa est. Ite missa est.

**System 2 (Measures 31-36):**

- Soprano (SOPR):** Ite missa est. Ite missa est. Ite missa est. Ite missa est. Ite missa est. Ite missa est.
- Alto (ALT):** Ite missa est. Ite missa est. Ite missa est. Ite missa est. Ite missa est. Ite missa est.
- Tenor (TEN):** Ite missa est. Ite missa est. Ite missa est. Ite missa est. Ite missa est. Ite missa est.
- Bass (BAS):** Ite missa est. Ite missa est. Ite missa est. Ite missa est. Ite missa est. Ite missa est.

The score includes vocal lines with lyrics and piano accompaniment for the Soprano and Alto parts. The piano part consists of a steady eighth-note accompaniment.



(A3)

Handwritten musical score for SATB choir and piano accompaniment. The score consists of seven staves. The top two staves are for Soprano (Soprano I and II) and Alto (Alto I and II). The middle two staves are for Tenor (Tenor I and II). The bottom two staves are for Bass (Bass I and II). The piano accompaniment is written on a grand staff with a treble and bass clef. The music is in 4/4 time and features a variety of rhythmic patterns, including eighth and sixteenth notes, and rests. There are some handwritten annotations and corrections throughout the score.

45 50

Handwritten musical score for a piano piece, measures 45 to 50. The score includes a grand staff with treble and bass clefs, and a separate bass line. The music features complex rhythmic patterns and dynamic markings. The lyrics "A. von" are written above the notes in measures 45-50.



(55)

Handwritten musical score for Soprano (SOP), Alto (ALT), Tenor (TEN), and Bass (BA) parts. The score is written on five systems of staves. The Soprano part (SOP) includes lyrics: "Gloria", "Tui = pa", "fad", "No", "pau", "pe", "Tui", "pe". The Alto part (ALT) includes lyrics: "Gloria", "A", "Gloria", "A", "Gloria". The Tenor part (TEN) includes lyrics: "Gloria", "Tui", "A", "vol". The Bass part (BA) includes lyrics: "Gloria", "Gloria", "A", "Gloria", "Gloria", "A", "Gloria", "A".

Handwritten annotations include "Duet" and "Balkansky" above the Bass staff. The score features various musical notations such as clefs, time signatures, and dynamic markings.



Handwritten musical score for Soprano, Alto, Tenor, and Piano. The score is in 4/4 time with a key signature of two sharps (F# and C#). The music is divided into two systems. The first system includes vocal lines for Soprano (SOP), Alto (ALT), and Tenor (TEN), and piano accompaniment for the right hand (RH) and left hand (LH). The second system continues the piano accompaniment. The score concludes with a double bar line and the word 'FINE'.

**Lyrics:**  
 Sop: in - - - in ff *ff* *ff*  
 Alt: *ff* *ff* *ff* *ff* *ff* *ff* *ff*  
 Ten: *ff* *ff* *ff* *ff* *ff* *ff* *ff*  
 RH: *ff* *ff* *ff* *ff* *ff* *ff* *ff*  
 LH: *ff* *ff* *ff* *ff* *ff* *ff* *ff*

*M. J. Simpson*  
 15. VI. 1982  
 A.S.V.

(12) ΕΞΙΜΟΝ

ΥΑΛΜΟΣ ΣΤΗΝ ΑΓΑΠΗ

(5)

2 = 44

*mf Cantabile*

Soprano I: *f* This is for you, for you even, Ann for you

Soprano II: *f* Fan Fan Fan Fan Fan Fan Fan Fan

Alto I: *mf Cantabile* This is for you, for you even, Ann for you

Alto II: *f* Fan Fan Fan Fan Fan Fan Fan Fan

Tenors I: *f* Fan Fan Fan Fan Fan Fan Fan Fan

Tenors II: *f* Fan Fan Fan Fan Fan Fan Fan Fan

Bass I: *f* Fan Fan Fan Fan Fan Fan Fan Fan

Bass II: *f* Fan Fan Fan Fan Fan Fan Fan Fan

*P*

(FAN = FFFANNNN...  
SONZ = SSSONNN...)

(10)

Handwritten musical score for Soprano (Sop), Alto (Alt), Tenor (Ten), and Bass (Bass) parts. The score is written on ten staves. The first five staves are for the vocal parts, and the last five are empty. The music is in 3/4 time and features various rhythmic patterns and dynamics. The lyrics are written below the notes.

**Sop**

**Alto**

**Ten**

**Bass**

FF

CHL - LIA

CHL - LIA

CHL - LIA

CHL - LIA

CHL - LIA

CHL - LIA

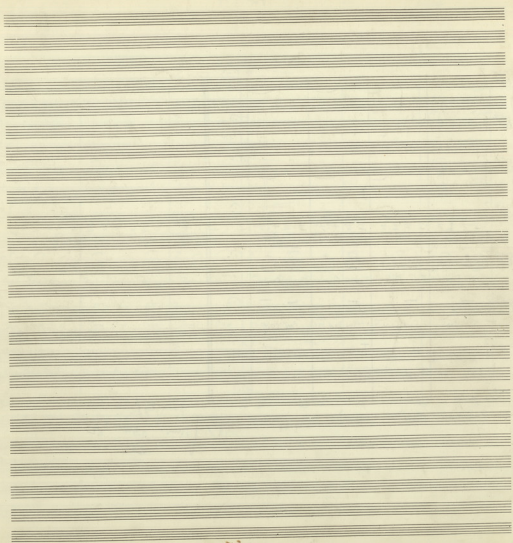
FF











Музыкальная  
ТА ЛУПКА  
Татьяна Александровна

Альбом ПИСЬМА ПИСЬМА ПИСЬМА

- Па парадке корбач -

(А. С. Соловьев)

