

H E A N S O N A

Basamir<sup>91</sup>

The first system of the manuscript features a vocal line on a single staff with a treble clef and a common time signature (C). The melody begins with a whole rest, followed by a series of eighth and sixteenth notes. Below the vocal line is a piano accompaniment consisting of two staves. The right hand plays a complex, rhythmic pattern of sixteenth and thirty-second notes, while the left hand provides a simple harmonic accompaniment with quarter and eighth notes.

A single staff of handwritten musical notation, likely a continuation of the vocal line from the first system. It contains several measures of music with various note values and rests.

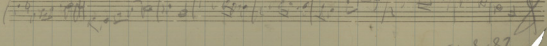
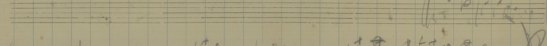
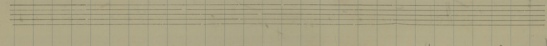
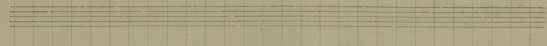
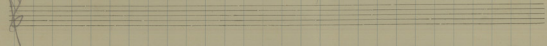
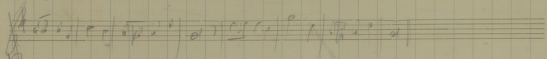
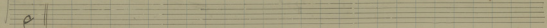
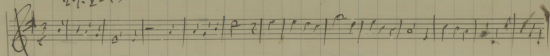
A single staff of handwritten musical notation, likely a continuation of the piano accompaniment from the first system. It shows dense, rhythmic patterns of notes.

A single staff of handwritten musical notation, likely a continuation of the vocal line. It features a series of notes with stems, some marked with a '+' sign, possibly indicating a specific performance instruction or a correction.

A single staff of handwritten musical notation, likely a continuation of the vocal line. It contains several measures of music with various note values and rests.

A single staff of handwritten musical notation, likely a continuation of the piano accompaniment. It shows dense, rhythmic patterns of notes, with some measures marked with a '+' sign.

27.2-43



28 aus