

~~TRIO~~ ~~TRIO~~

N°3

MOVEMENT

TROISIEME
III MOUVEMENT

[M.M. 1272]

3 Flauti
(anche prima e seconda)

2 Oboi

2 Clarini

2 Fagotti

3 TRIANGOLI

PIATTI
(Cassa, Tamburi, etc.)

4 Xylo

Viali I
[Le Ippurta con sensacion]

Viali II
[Le Solo con sensacion]

Alti
[Le Solo con sensacion]

Vocali

Organo

Xylo

3
4
1

00

ORCHESTRE
ARMONISATION
DE FINESTRETTA
METRA

Timbales = Timpani
mixis timpani
2 tam TAMPHONIB
III MOUVEMENT

PERCUSSION I
XYLO - WOOD BLOCK - FOUNTAIN
TAM - TAM - WOOD BLOCK - FOUNTAIN
(XYLO - WOOD BLOCK - FOUNTAIN)

116

5

3 Fl.

2 Ob

2 Cl

2 Fg

3 Cor

3 Trp

3 Tbn

Timp

4 Cr. Cors

CELESTA

Viol. I

Viol. II

Alt

Vcl.

CBas

Musical score for woodwinds and brass instruments. The staves are labeled: 3 Fl., 2 Ob, 2 Cl, 2 Fg, 3 Cor, 3 Trp, 3 Tbn, and Timp. The music is written in a common time signature with various dynamics and articulations. A large bracket on the right side of the score indicates a section cut-off.

Musical score for strings and celesta. The staves are labeled: 4 Cr. Cors, CELESTA, Viol. I, Viol. II, Alt, Vcl., and CBas. The music includes dynamic markings like 'ff' and 'f'. A circled '4' is written above the string staves.

Musical score for strings and celesta. The staves are labeled: Viol. I, Viol. II, Alt, Vcl., and CBas. The music includes performance instructions such as '2 soli', 'Con sordina & solo', 'Con sordina', 'A solo', and 'Con sordina'. There are also handwritten notes like 'P. forte' and 'P. piano'. A circled '5' is written above the Viol. I staff.

117

15

Per in Adagio
 Alz. T. in METRA
 in tempo
 in Adagio
 in v. v. v. v.
 Adagio in
 in tempo



Handwritten musical score for a large ensemble. The score is divided into several systems of staves. The instruments listed on the left are:

- Hr. (Horn)
- Ob. (Oboe)
- Cl. (Clarinet)
- Fg. (Flute)
- C. (Cello)
- Trp. (Trumpet)
- 1-2 Trp. (Trumpets 1-2)
- Trbn. (Trombone)
- Timps. (Timpani)
- ④ Cu. Cass. (Cymbals)
- ② Trsn. (Toms)
- ① Xylo. (Xylophone)
- ④ CELESTA (Celesta)
- Vcl. I (Violin I)
- Vcl. II (Violin II)
- Alti. (Viola)
- Vcel. (Violoncello)
- Cont. (Contrabasso)

Key annotations and markings include:

- Measure 10: circled number 10.
- Measure 15: circled number 15.
- Measure 20: circled number 20.
- Measure 25: circled number 25.
- Measure 30: circled number 30.
- Measure 35: circled number 35.
- Measure 40: circled number 40.
- Measure 45: circled number 45.
- Measure 50: circled number 50.
- Measure 55: circled number 55.
- Measure 60: circled number 60.
- Measure 65: circled number 65.
- Measure 70: circled number 70.
- Measure 75: circled number 75.
- Measure 80: circled number 80.
- Measure 85: circled number 85.
- Measure 90: circled number 90.
- Measure 95: circled number 95.
- Measure 100: circled number 100.
- Measure 105: circled number 105.
- Measure 110: circled number 110.
- Measure 115: circled number 115.
- Measure 120: circled number 120.
- Measure 125: circled number 125.
- Measure 130: circled number 130.
- Measure 135: circled number 135.
- Measure 140: circled number 140.
- Measure 145: circled number 145.
- Measure 150: circled number 150.
- Measure 155: circled number 155.
- Measure 160: circled number 160.
- Measure 165: circled number 165.
- Measure 170: circled number 170.
- Measure 175: circled number 175.
- Measure 180: circled number 180.
- Measure 185: circled number 185.
- Measure 190: circled number 190.
- Measure 195: circled number 195.
- Measure 200: circled number 200.

Other markings include dynamic markings (p, mp, mf, f, sf, sfz, sfz), articulation (acc., stacc.), and performance instructions like "rit. Pi. grande in D'isolo" and "1. 2. 3. con Sordina".

Handwritten number 3 and some illegible notes on the right margin.



25

7

37

pp pp pp

Cor

Fil.

Tr.

TAM-TAM
TAM-TAM

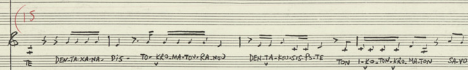
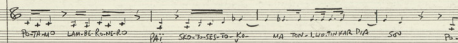
② Trombone

⑤ Celesta

Varpa

20

119



LI-DA-PHO-KA-RIS STO KA-OS SYER-NI-PO-RA AS-A-KOU-STIRUGI-TI-SRO-PI

TO-TRA-GONDI-TIS-GIG-PHIT-TE-LI-KA-TI-LI-KTO STO KA OS E-NA-GIA-SOU-TA

Enchirion

(C) *Stacc. 1.* *dim.* *pp*
 Vn. I
 Vn. II
 A.G.
 Vc.
 Kb.

136

Allegro

M.M. ♩ = 182

8-11
Fog

~~Allegro~~

Handwritten musical score for orchestra and voice. The score is divided into three systems. The first system includes Flute I & II, Piccolo, 2 Oboes, 2 Clarinets, 2 Bassoons, Corno I & II, and Tromba I & II. The second system includes Tuba, Tromba, Timpani, and three sets of Percussion (A, C, T.M.). The third system includes Violin I & II, Alto, Violoncello, and Contrabasso. The score features various time signatures (3/4, 4/4) and dynamic markings (ff, f). There are also handwritten annotations and corrections throughout the score.

Lento

mf molto cantabile

(5)

Solo $\frac{8}{4}$
CANTALTO

TO - TRA - GEN - DI - TIS - GIS TO - TRA - GEN - DI - XE - GE - DEN - TA - RO - SE - PTE QU - TE - RA

Viol. I $\frac{8}{4}$ *noa loc* *der.* *sempre* *pp*

2^a Viol. $\frac{8}{4}$ *der.* *al*

Viol. II $\frac{8}{4}$ *noa loc* *pp* *sempre*

Tutti $\frac{8}{4}$ *noa loc* *pp* *sempre*

2^a Sna $\frac{8}{4}$ *der.*

ALT. $\frac{8}{4}$ *der.*

Tutti $\frac{8}{4}$ *noa loc*

Vocal $\frac{8}{4}$ *noa loc*

CB $\frac{8}{4}$ *der.* *pp* *sempre*



$\frac{8}{4}$ KOU - DI - PA SKO - TO - JES - O - LA - TA - FOR - M - IA TA - DA SI TO - NE RO TO - LI - PE - RO - NE - TO - TO

V. I $\frac{8}{4}$

2^a Sna $\frac{8}{4}$ *noa loc* *der.* *al*

V. II $\frac{8}{4}$

Tutti $\frac{8}{4}$ *noa loc*

2^a Sna $\frac{8}{4}$ *noa loc* *der.* *al*

ALT. $\frac{8}{4}$

Tutti $\frac{8}{4}$ *noa loc*

Va $\frac{8}{4}$

CB $\frac{8}{4}$

Fog

Handwritten musical score for 'Fog'. The score is written on ten staves. The first system includes a 4/3 time signature and a circled '5'. The second system includes a 4/3 time signature and a circled '5'. The third system includes a 4/3 time signature and a circled '5'. The fourth system includes a 4/3 time signature and a circled '5'. The fifth system includes a 4/3 time signature and a circled '5'. The sixth system includes a 4/3 time signature and a circled '5'. The seventh system includes a 4/3 time signature and a circled '5'. The eighth system includes a 4/3 time signature and a circled '5'. The ninth system includes a 4/3 time signature and a circled '5'. The tenth system includes a 4/3 time signature and a circled '5'. The score features various musical notations including notes, rests, and dynamic markings such as 'ff' and 'f'. There are also some handwritten annotations and symbols throughout the score.

- Timp
- ③ Piatti
- ④ Cori
- ② T.mil

137

80

10

Fl. II 2

Pi. II 2

Ob. 2

Cl. 2

Fg. 2

Ca. 2

Trp. 2

Tob. 2

Temp. 2

③ G

④ G

② C

Vol. I 2

Vol. II 2

Alt. 2

Vcl. 2

Cbass. 2

Ca. Sordina

10

2

3

3

3

139

(15)

Handwritten musical score for orchestra, including strings, woodwinds, brass, and percussion. The score is written on multiple staves with various musical notations, including dynamics (ff, sf, f, sfz), articulation (acc, marc), and performance instructions (Saca cordines, Grand Basso). The score includes a section marked (15) and a section marked 1-15. The percussion part includes Timpani, Fagot, Clarinet, and Wood Block. The string part includes Violins I, Violins II, Violas, Cellos, and Double Basses. The woodwind part includes Flutes, Oboes, Clarinets, Bassoons, and Contrabassoon. The brass part includes Trumpets, Trombones, and Tuba. The percussion part includes Timpani, Fagot, Clarinet, and Wood Block. The score is written in a major key with a 2/4 time signature.

- ③ Fagot
- ④ Clarinet
- ③ Wood Block

(140)

83-125

Handwritten musical score for piano and orchestra. The score is written on ten staves. The top five staves are for the piano, and the bottom five are for the orchestra. The piano part features complex rhythmic patterns with many accents and slurs. The orchestra part includes woodwinds and strings, with some parts marked "T.M.H.". There are large handwritten numbers "25" and "43" in circles, and various other markings like "Piano" and "Cresc.".

③ Piano
④ Cresc.

25

T.M.H.

142

84

Trio

- 84 - 116

4/4 2/4 3/4

Fl
Pic
Ob
Cl
Fg
Cor
Tpt
Tbn
Timp

3 PIANO
4 CARICIA
3 T.M.I.

2 3

mf
ff

3/4 2/4 3/4

Viol I
Viol II
Alti
Vcll
Cbass

mf
ff

2 3

143

Handwritten musical score for measures 29-30. The score is written on multiple staves. Above the staves, there are time signatures: 2/4, 3/4, 2/4, and 3/4. The notation includes various rhythmic patterns, including eighth and sixteenth notes, and rests. There are dynamic markings such as *ff* and *mf*. A large handwritten number '13' is written in red at the top center. A large handwritten number '15' is written in the middle of the score. There are also some handwritten annotations like '1-2' and 'at'.

- ① Xylo
- ③ Piano
- ④ G. Cas.
- ⑤ (Tromp.)

Handwritten musical score for measures 30-31. The score is written on multiple staves. Above the staves, there are time signatures: 2/4, 3/4, 2/4, and 3/4. The notation includes various rhythmic patterns, including eighth and sixteenth notes, and rests. There are dynamic markings such as *ff* and *mf*. A large handwritten number '14' is written in a circle at the bottom center. There are also some handwritten annotations like 'fil' and 'dis'.

~~TRAP~~
Trio

-86-2a

3
4 (35)

2

3

Fl.
Pic.
Ob.
Cl.
Fg.

Cor.

Trp. 1
2

Trp. 3-4
Tuba

Timp

Xylo

2113

3
4 (35)

2
4

3
4

Viol. I
Viol. II
Alto
Vcllo
Cb.

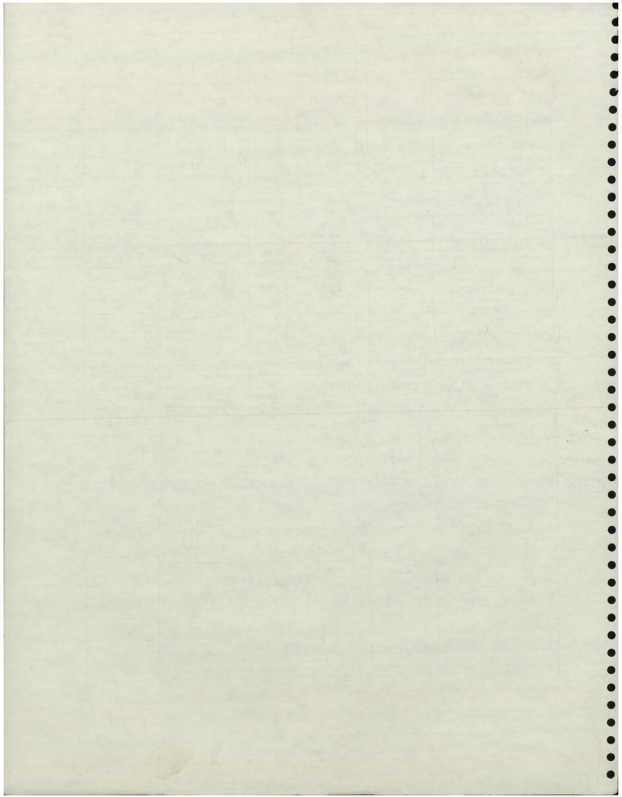
140

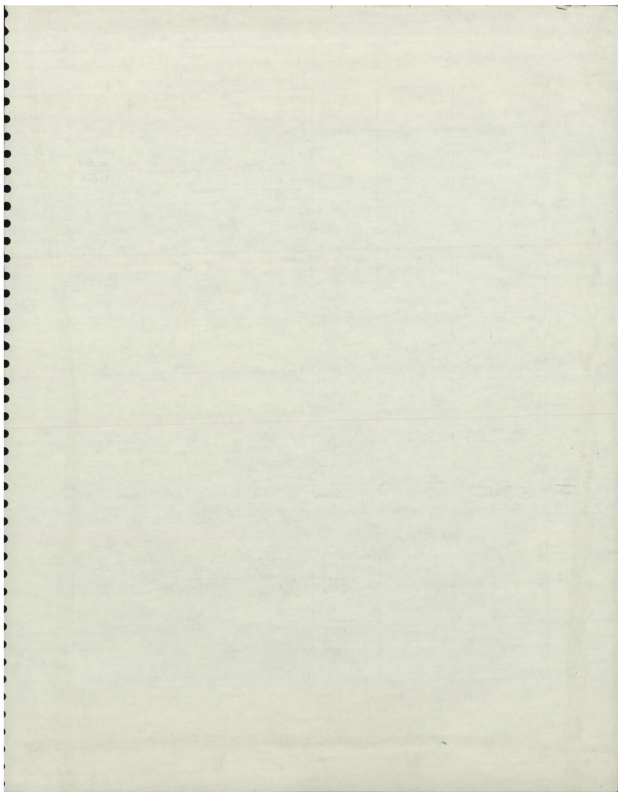
- 87 - 7 -

87 127

- ① Xylo
- ④ Clarinet
- ② Fagot

140





Handwritten musical score for percussion instruments. The score is written on multiple staves. At the top, there are time signatures: 2/4, 3/4 (circled), 2/4, and 3/4. The notation includes various rhythmic patterns, rests, and dynamic markings. A circled '50' is present in the first system, and a circled '50' is in the second system. A circled '90' is in the third system. There are also some handwritten numbers like '3' and '2' near the staves.

TimP

- ① Xylo
- ② Flaut
- ③ T. Bass
- ④ An. Bass
- ⑤ T. Mil.

Empty musical staves at the bottom of the page.

90

- 90 - 75 55

3
4

55

55

55

55

Temp

- ① XYLO
- ③ PIATTI
- ④ T-TOM
- CAJON
- ② T-MIL.

149

Handwritten musical score for the first system. It consists of several staves. The top two staves have a treble clef and contain complex rhythmic patterns with many beamed notes. The middle two staves have a bass clef and contain similar rhythmic patterns. The bottom two staves have a bass clef and contain simpler rhythmic patterns. A large '4' is written below the bottom two staves, indicating a 4/4 time signature. The system ends with a double bar line and the number '43' written vertically on the right.

Handwritten musical score for the second system, consisting of a single staff with a treble clef. It contains a sequence of notes and rests. A large '4' is written below the staff, indicating a 4/4 time signature. The system ends with a double bar line and the number '43' written vertically on the right.

Handwritten musical score for the third system, consisting of a single staff with a treble clef. It contains a sequence of notes and rests. A large '4' is written below the staff, indicating a 4/4 time signature. The system ends with a double bar line and the number '43' written vertically on the right.

7 me

- ①
- ②
- ③
- ④

Handwritten musical score for the fourth system. It consists of several staves. The top two staves have a treble clef and contain complex rhythmic patterns. The middle two staves have a bass clef and contain similar rhythmic patterns. The bottom two staves have a bass clef and contain simpler rhythmic patterns. A large '4' is written below the bottom two staves, indicating a 4/4 time signature. The system ends with a double bar line and the number '43' written vertically on the right.

Handwritten musical score for the fifth system. It consists of several staves. The top two staves have a treble clef and contain complex rhythmic patterns. The middle two staves have a bass clef and contain similar rhythmic patterns. The bottom two staves have a bass clef and contain simpler rhythmic patterns. A large '4' is written below the bottom two staves, indicating a 4/4 time signature. The system ends with a double bar line and the number '43' written vertically on the right.

Handwritten musical score for the sixth system. It consists of several staves. The top two staves have a treble clef and contain complex rhythmic patterns. The middle two staves have a bass clef and contain similar rhythmic patterns. The bottom two staves have a bass clef and contain simpler rhythmic patterns. A large '4' is written below the bottom two staves, indicating a 4/4 time signature. The system ends with a double bar line and the number '43' written vertically on the right.

92

92 *Br* 7

60

3

Woodwind section staves: Flute (Fl), Piccolo (Pic), Oboe (Ob), Clarinet (Cl), Bassoon (Fag), and Bassoon (S).

Flute and Piccolo parts feature complex rhythmic patterns with accents and slurs. The Oboe part has a melodic line with slurs. The Clarinet and Bassoon parts provide harmonic support with rhythmic patterns. The Bassoon (S) part has a simple melodic line.

String section staves: Violin (Viol), Viola (Vcl), and Cello/Double Bass (Tace).

The Violin and Viola parts have melodic lines with slurs and accents. The Cello/Double Bass part is marked "Tace" (silent) for most of the passage.

Violoncello (Vcl) and Contrabasso (Cb) parts.

① Vcl. *PIANTO*
 ② Cb. *CON CASATA*
 ③ T. *PIANTO*

The Vcl part has a melodic line with slurs and accents. The Cb part has a rhythmic pattern. The T. part has a melodic line with slurs and accents.

Violini (Viol I, Viol II) and other instruments (Alto Saxophone (Alto Sax), Violoncello (Vcl), Contrabasso (Cb)).

Violini parts have melodic lines with slurs and accents. The Alto Saxophone part has a melodic line with slurs and accents. The Vcl and Cb parts have rhythmic patterns.

2

3

- 95.

(75)

42

Musical score for strings and woodwinds. It features five staves with complex rhythmic patterns and dynamic markings. The first three staves are for strings, and the last two are for woodwinds. The score is divided into three measures, with the first measure starting with a 4/4 time signature and the second with a 3/4 time signature.

Musical score for brass instruments, including trumpets and trombones. It features two staves with dynamic markings such as *pp*, *ff*, and *F*. The score includes large handwritten numbers '2' and '3' above the staves, indicating specific measures or sections.

Musical score for woodwinds, including flutes and clarinets. It features two staves with dynamic markings and the instruction *1. & 3 senza Sordina*. The score includes large handwritten numbers '2' and '3' above the staves.

Musical score for timpani, featuring a single staff with rhythmic notation and the instruction *F marc*. Large handwritten numbers '2' and '3' are present above the staff.

PIATTO
CASSA

Musical score for percussion, including snare drum and cymbals. It features two staves with dynamic markings and the instruction *rit. cresc*. Large handwritten numbers '2' and '3' are present above the staves.

Musical score for woodwinds, including flutes and clarinets. It features two staves with dynamic markings and the instruction *rit. cresc*. Large handwritten numbers '2' and '3' are present above the staves. A circled number '75' is visible in the second measure.

96

Adagio (♩ = 56)

- 96 - 104

80

Fl
Fl
Ob
Cl.
Fg

Gtr

Contra 2

80

Tp

Tub

Timp

C

C

③ PIAFO

Pierre fait tout avec
François de Toulouse
L'Alfani.

Fermez les yeux sans s'écouter
- sur - son -

Adagio (♩ = 56)

80

Viol I
Viol II
Alti
Vcl
Cb.

T

Handwritten musical score for orchestra and strings. The score is arranged in systems with the following parts listed on the left:

- Fl.
- Pic.
- OB
- Cl.
- Fg.
- Coro. 1
- Coro. 2
- Tp.
- Tpb.
- Tuba
- Drum
- Snare
- Cymb.
- Trp.
- Viol. I
- Viol. II
- Alti.
- Celli.
- Cont.

The score includes various musical notations such as dynamics (*pp*, *ppp*, *sf*, *dim*, *ff*), articulation (*acc.*), and performance instructions like *no sostenuto*. There are two circled numbers, 85, in the middle of the score. A large handwritten 'T' is at the top right. The page number '97' is written in the top right corner with '133' written above it.

98

- 98 - 98

Fl
 Pic
 Ob
 Cl
 Fg
 Coro 1
 Coro 2
 Trp 1
 Trp 3
 Trp 4
 Tuba
 ① Xyl.
 ③ Plat.
 ⑥ Agr.
 ⑤ Cym.
 Viol I
 Viol II
 Alk
 Vcl
 Cbn

157

100

- 100 - 2A

a lungo

Fl
Pic
Ob
Cl.
Fg
1
Ca
3
2
Tpr.
Tob
Tob.
① Xyl
③ Piatto
② Acc.
⑤ Cym.
Viol I
Viol II
Vcl.
Cb.

100

105

105

cresc. *mf* *cresc.* *f*

acc.

a lungo

2

4

1 2 3

2

4

1. 2. 3. Co. Sordina

2

4

1. 2. 3. Co. Sordina

2

4

2 Timpani

ff

2

4

105

Tutti

fff

2

4

U V U V U

Tutti

2

4

U V U V U

fff *sf* *sf* *sf*

fff *sf* *sf* *sf*

2

4

U V U V U

fff *sf* *sf* *sf*

fff *sf* *sf* *sf*

Fl
Pic
Ob
Cl
Fag
Trp 1-2
Trp 3-4
Corno
Trp 1-2
Trp 3-4
Tim
Xylo
Tom-Tom et Cass.
W. Shou
Kupa
Viol I
Viol II
Vcl
Cello

110
116

ff
sf
sfz

Cass. solo
Cass. in

107

702

- 102 - #11

Fl
Pz
Op
Cl
Fg
C
T
Tpt
Tpt

dim
dim
dim
dim
dim
dim
dim
dim

C
C
C
C
C
C
C
C

p
p
p
p
p
p
p
p

3
4
3
4
3
4
3
4

(115)

(120)

① Trp
① Xyl
③ Tam Tam
④ Gr Cass
② W. Drum
⑥ Agr.
⑤ C. Bass

C
C
C
C
C
C
C
C

p
p
p
p
p
p
p
p

3
4
3
4
3
4
3
4

(115)

Viol I
Viol II
Alc
Vcl
Cb.

pp
pp
pp
pp
pp

pp
pp
pp
pp
pp

3
4
3
4
3
4

(115)

(120)

(161)

TT

Viol I
Viol II
Alti
Viol.

p *con* *fff*

120

Viol I
Viol II
Alti
Viol.

f *dim* *p*

130

42

42

162

