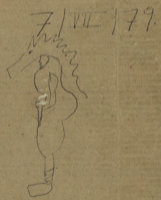
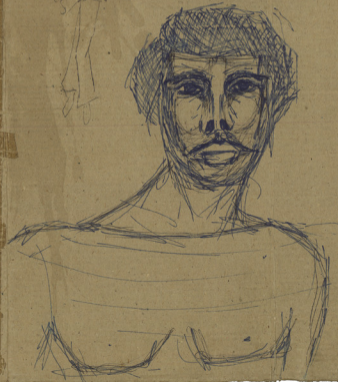
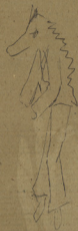


ΑΝΝΕΙΣ



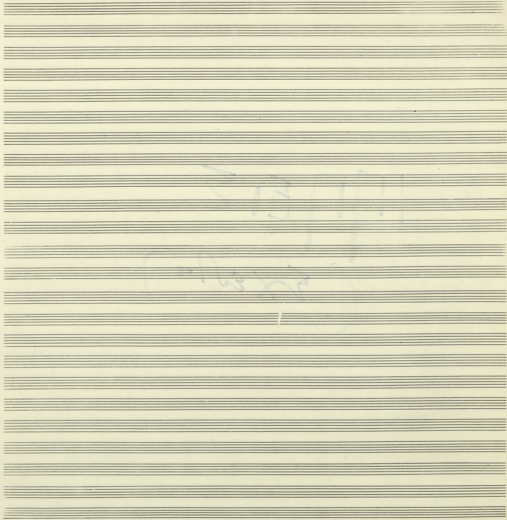
7/VII/79.

ΚΩΣΤΑΣ



ΠΗΛΙΣ

(ΣΧΕΔΙΑ)



Handwritten musical notation for the first system, featuring four staves: Soprano (Soprano), Alto (Alto), Tenor (Tenor), and Bass (Bass). The music is written in 8/8 time and includes rhythmic markings such as accents and slurs.

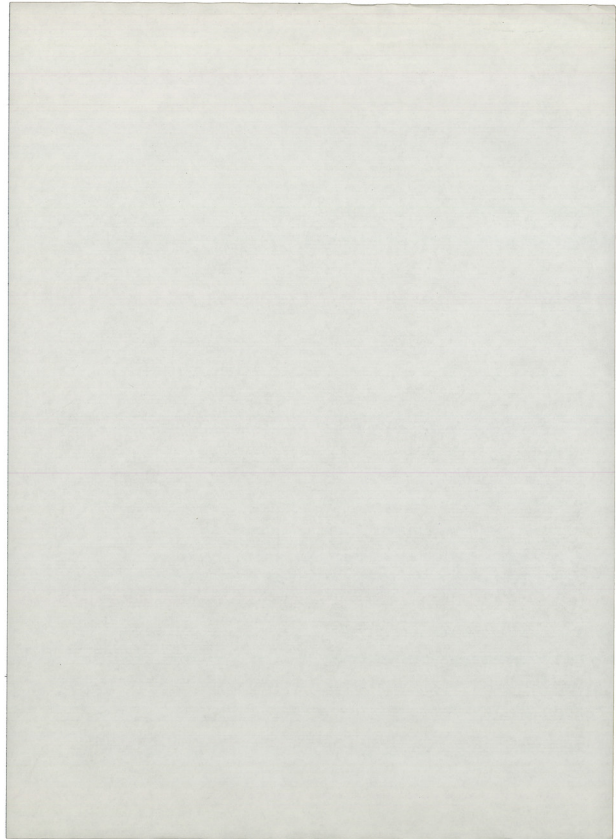
Handwritten musical notation for the second system, featuring four staves: Soprano, Alto, Tenor, and Bass. The notation continues with rhythmic patterns and includes a fermata over the final measure of the bass line.

Handwritten musical notation for the third system, featuring two staves: Treble (Treble) and Bass (Bass). A circular stamp with the word "IMPRINTS" is visible on the right side of the page.

Handwritten musical notation for the fourth system, featuring two staves: Treble (Treble) and Bass (Bass). The notation includes rhythmic markings and a fermata over the final measure of the bass line.

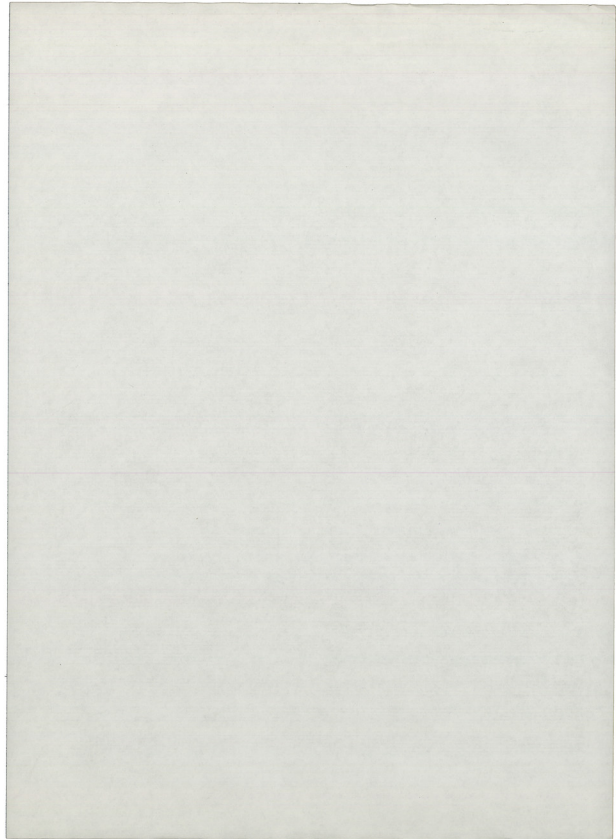
Handwritten musical notation for the fifth system, featuring two staves: Treble (Treble) and Bass (Bass). The notation includes the lyrics "Πίστις καὶ ἔργα" and "Πίστις ἄνευ ἔργων" with a circled number 6.

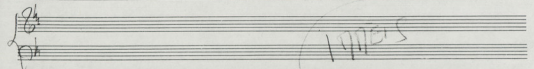
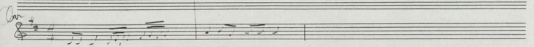
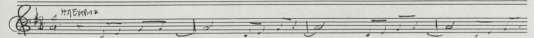
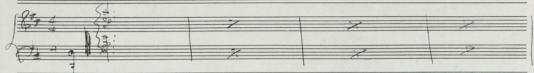
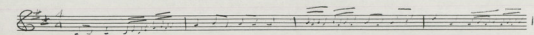
Handwritten musical notation for the sixth system, featuring two staves: Treble (Treble) and Bass (Bass). The notation includes the lyrics "Πίστις ἄνευ ἔργων ὡς ἄνευ σώματος" and a circled number 7.

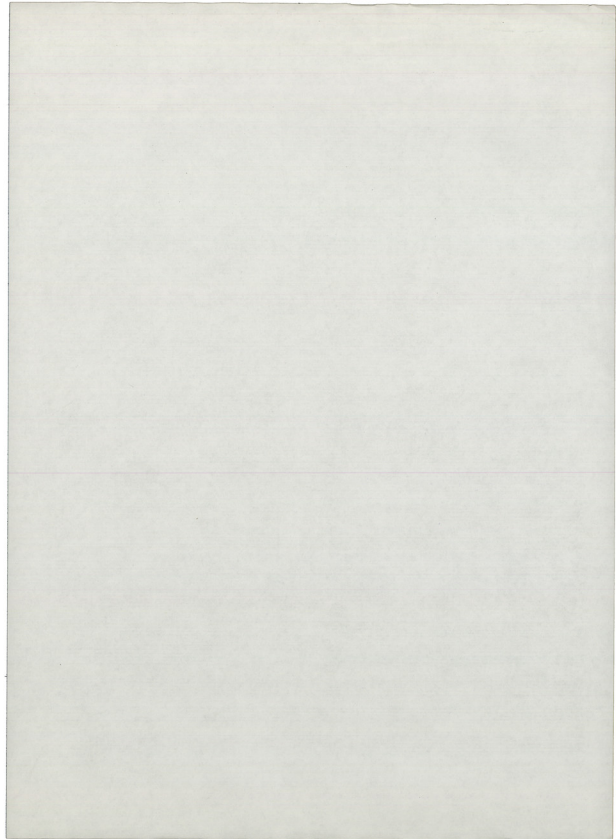


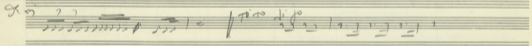
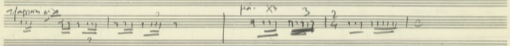
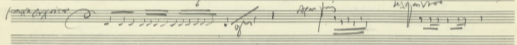
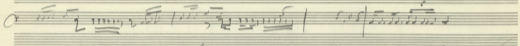
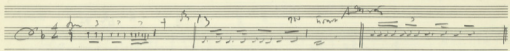
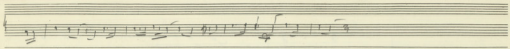
Handwritten musical notation on a grand staff. The top staff contains a treble clef and a key signature of two sharps (F# and C#). The notation includes various notes, rests, and accidentals. The middle staff contains a bass clef and similar notation. The bottom staff contains a series of rhythmic markings and notes, including a double bar line and a circled section. The word "Trio" is written below the bottom staff.

Handwritten musical notation on a grand staff. The top staff contains a treble clef and a key signature of two sharps (F# and C#). The notation includes various notes, rests, and accidentals. The middle staff contains a bass clef and similar notation. The bottom staff contains a series of rhythmic markings and notes, including a double bar line and a circled section. The word "Trio" is written below the bottom staff.









55188
Nydam 55194

VC *mf* $\text{C}^{\#} \text{E}^{\#} \text{G}^{\#} \text{A}^{\#} \text{B}^{\#} \text{C}^{\#}$

CB *mf* $\text{C}^{\#} \text{E}^{\#} \text{G}^{\#} \text{A}^{\#} \text{B}^{\#} \text{C}^{\#}$

Arms $\text{C}^{\#} \text{E}^{\#} \text{G}^{\#} \text{A}^{\#} \text{B}^{\#} \text{C}^{\#}$

Rxn $\text{C}^{\#} \text{E}^{\#} \text{G}^{\#} \text{A}^{\#} \text{B}^{\#} \text{C}^{\#}$

mf $\text{C}^{\#} \text{E}^{\#} \text{G}^{\#} \text{A}^{\#} \text{B}^{\#} \text{C}^{\#}$

mf $\text{C}^{\#} \text{E}^{\#} \text{G}^{\#} \text{A}^{\#} \text{B}^{\#} \text{C}^{\#}$

mf $\text{C}^{\#} \text{E}^{\#} \text{G}^{\#} \text{A}^{\#} \text{B}^{\#} \text{C}^{\#}$

mf $\text{C}^{\#} \text{E}^{\#} \text{G}^{\#} \text{A}^{\#} \text{B}^{\#} \text{C}^{\#}$

mf $\text{C}^{\#} \text{E}^{\#} \text{G}^{\#} \text{A}^{\#} \text{B}^{\#} \text{C}^{\#}$

mf $\text{C}^{\#} \text{E}^{\#} \text{G}^{\#} \text{A}^{\#} \text{B}^{\#} \text{C}^{\#}$

Coln $\text{C}^{\#} \text{E}^{\#} \text{G}^{\#} \text{A}^{\#} \text{B}^{\#} \text{C}^{\#}$

$\text{C}^{\#} \text{E}^{\#} \text{G}^{\#} \text{A}^{\#} \text{B}^{\#} \text{C}^{\#}$

$\text{C}^{\#} \text{E}^{\#} \text{G}^{\#} \text{A}^{\#} \text{B}^{\#} \text{C}^{\#}$

VST

the b =

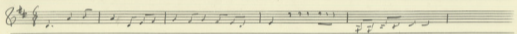
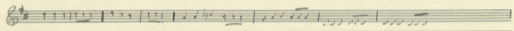
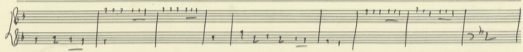
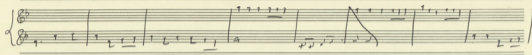
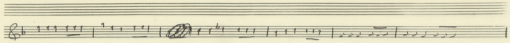
TRADITIONAL

CHIPPY TRUS

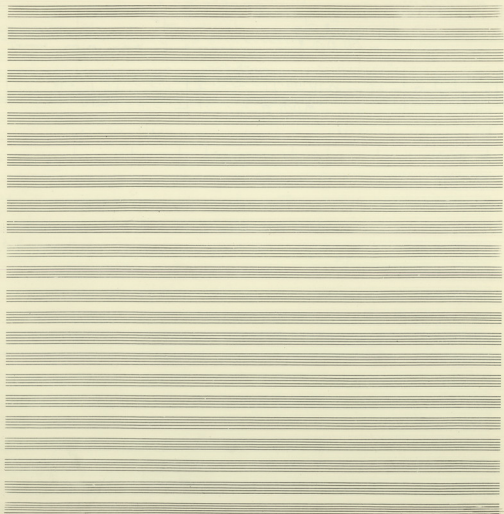
TRADITIONAL

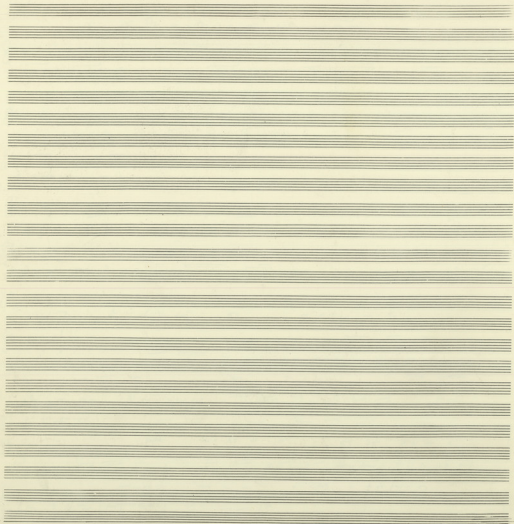
Contra Bass

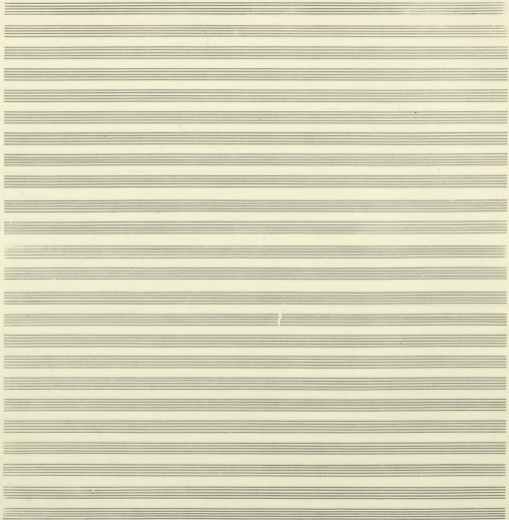
TRADITIONAL



[The page contains approximately 25 lines of extremely faint, illegible text, likely bleed-through from the reverse side of the document.]







et in spiritu sancto et in ecclesia catholica apostolica et in communione apostolorum

et in ecclesia catholica apostolica et in communione apostolorum

et in ecclesia catholica apostolica et in communione apostolorum

et in ecclesia catholica apostolica et in communione apostolorum

et in ecclesia catholica apostolica et in communione apostolorum

et in ecclesia catholica apostolica et in communione apostolorum

et in ecclesia catholica apostolica et in communione apostolorum

et in ecclesia catholica apostolica et in communione apostolorum

et in ecclesia catholica apostolica et in communione apostolorum

et in ecclesia catholica apostolica et in communione apostolorum

et in ecclesia catholica apostolica et in communione apostolorum

et in ecclesia catholica apostolica et in communione apostolorum

Handwritten musical notation for two staves. The top staff is in treble clef with a key signature of one sharp (F#) and a 4/4 time signature. The bottom staff is in bass clef. The music consists of rhythmic patterns and notes, with some markings above the notes.

Handwritten musical notation for two staves. The top staff is in treble clef with a key signature of one sharp (F#) and a 4/4 time signature. The bottom staff is in bass clef. The music includes notes and rests, with some markings above the notes.

Handwritten musical notation for two staves. The top staff is in treble clef with a key signature of one sharp (F#) and a 4/4 time signature. The bottom staff is in bass clef. The music includes notes and rests, with some markings above the notes.

Handwritten musical notation for two staves. The top staff is in treble clef with a key signature of one sharp (F#) and a 4/4 time signature. The bottom staff is in bass clef. The music includes notes and rests, with some markings above the notes.

Handwritten musical notation for two staves. The top staff is in treble clef with a key signature of one sharp (F#) and a 4/4 time signature. The bottom staff is in bass clef. The music includes notes and rests, with some markings above the notes.

Handwritten musical notation for two staves. The top staff is in treble clef with a key signature of one sharp (F#) and a 4/4 time signature. The bottom staff is in bass clef. The music includes notes and rests, with some markings above the notes.

Handwritten musical notation for two staves. The top staff is in treble clef with a key signature of one sharp (F#) and a 4/4 time signature. The bottom staff is in bass clef. The music includes notes and rests, with some markings above the notes.

Handwritten musical notation for two staves. The top staff is in treble clef with a key signature of one sharp (F#) and a 4/4 time signature. The bottom staff is in bass clef. The music includes notes and rests, with some markings above the notes.

Handwritten musical notation on a single staff with lyrics: "Mourner qui...".

Handwritten musical notation on a single staff with lyrics: "X...".

Handwritten musical notation on a single staff with lyrics: "Su...".

Handwritten musical notation on a single staff with lyrics: "Su...".

Handwritten musical notation on a single staff with lyrics: "Su...".

Handwritten musical notation on a single staff with lyrics: "Su...".

Handwritten musical notation on a single staff with lyrics: "Su...".

Handwritten musical notation on a single staff with lyrics: "Su...".

Handwritten musical notation on a single staff with lyrics: "Su...".

Handwritten musical notation on a five-line staff. The notes are dense and somewhat illegible due to the handwriting. There are some markings above the staff, possibly indicating dynamics or articulation.

Handwritten musical notation on a five-line staff. A key signature change is indicated by a double bar line and a sharp sign (F#) above the staff. The notes continue across the staff.

Handwritten musical notation on a five-line staff. The notes are more widely spaced than in the previous systems. There are some markings below the staff, possibly indicating fingerings or breath marks.

Handwritten musical notation on a five-line staff. This system includes some annotations above the staff, such as "Alto" and "Alto (excitato)". The notes are dense and include some slurs.

Handwritten musical notation on a five-line staff. The notes are more widely spaced. There are some markings below the staff, possibly indicating fingerings or breath marks.

Handwritten musical notation on a five-line staff. The notes are more widely spaced. There are some markings below the staff, possibly indicating fingerings or breath marks.

Handwritten musical notation on a five-line staff. The notes are more widely spaced. There are some markings below the staff, possibly indicating fingerings or breath marks.

no 15

Handwritten musical score for the first system, featuring a treble clef, a key signature of one sharp (F#), and a 2/4 time signature. The music consists of a single melodic line with various note values and rests.

Handwritten musical score for the second system, featuring a treble clef, a key signature of one sharp (F#), and a 2/4 time signature. The music consists of a single melodic line with various note values and rests.

pele

Handwritten musical score for the third system, featuring a treble clef, a key signature of one sharp (F#), and a 2/4 time signature. The music includes lyrics written below the notes.

Handwritten musical score for the fourth system, featuring a treble clef, a key signature of one sharp (F#), and a 2/4 time signature. The music includes lyrics written below the notes.

Handwritten musical score for the fifth system, featuring a treble clef, a key signature of one sharp (F#), and a 2/4 time signature. The music includes lyrics written below the notes.

Handwritten musical score for the sixth system, featuring a treble clef, a key signature of one sharp (F#), and a 2/4 time signature. The music includes lyrics written below the notes.

Handwritten musical score for the seventh system, featuring a treble clef, a key signature of one sharp (F#), and a 2/4 time signature. The music includes lyrics written below the notes.

Handwritten musical notation on a grand staff. The upper staff contains a melodic line with notes and rests. The lower staff contains a bass line with notes and rests. There are some handwritten annotations above the staff, including "an a f5" and "an a f5".

Handwritten musical notation on a grand staff. The upper staff contains a melodic line with notes and rests. The lower staff contains a bass line with notes and rests. There are some handwritten annotations above the staff, including "an a f5" and "an a f5".

Handwritten musical notation on a grand staff. The upper staff contains a melodic line with notes and rests. The lower staff contains a bass line with notes and rests. There are some handwritten annotations above the staff, including "an a f5" and "an a f5".

Handwritten musical notation on a grand staff. The upper staff contains a melodic line with notes and rests. The lower staff contains a bass line with notes and rests. There are some handwritten annotations above the staff, including "an a f5" and "an a f5".

Handwritten musical notation on a grand staff. The upper staff contains a melodic line with notes and rests. The lower staff contains a bass line with notes and rests. There are some handwritten annotations above the staff, including "an a f5" and "an a f5".

Handwritten musical notation on a grand staff. The upper staff contains a melodic line with notes and rests. The lower staff contains a bass line with notes and rests. There are some handwritten annotations above the staff, including "an a f5" and "an a f5".

Handwritten musical notation on a grand staff. The upper staff contains a melodic line with notes and rests. The lower staff contains a bass line with notes and rests. There are some handwritten annotations above the staff, including "an a f5" and "an a f5".

Handwritten musical notation on a grand staff. The upper staff contains a melodic line with notes and rests. The lower staff contains a bass line with notes and rests. There are some handwritten annotations above the staff, including "an a f5" and "an a f5".

Handwritten musical notation on a grand staff. The upper staff contains a melodic line with notes and rests. The lower staff contains a bass line with notes and rests. There are some handwritten annotations above the staff, including "an a f5" and "an a f5".

Handwritten musical notation on a five-line staff. The notes are mostly quarter and eighth notes. Below the staff, there are some faint, illegible handwritten words.

Handwritten musical notation on a five-line staff. The notes are mostly quarter and eighth notes. Below the staff, there are some faint, illegible handwritten words.

Handwritten musical notation on a five-line staff. The notes are mostly quarter and eighth notes. Below the staff, there are some faint, illegible handwritten words.

Handwritten musical notation on a five-line staff. The notes are mostly quarter and eighth notes. Below the staff, there are some faint, illegible handwritten words.

Handwritten musical notation on a five-line staff. The notes are mostly quarter and eighth notes. Below the staff, there are some faint, illegible handwritten words.

Handwritten musical notation on a five-line staff. The notes are mostly quarter and eighth notes. Below the staff, there are some faint, illegible handwritten words.

Handwritten musical notation on a five-line staff. The notes are mostly quarter and eighth notes. Below the staff, there are some faint, illegible handwritten words.

Handwritten musical notation on a five-line staff. The notes are mostly quarter and eighth notes. Below the staff, there are some faint, illegible handwritten words.

Handwritten musical notation on a five-line staff. The notes are mostly quarter and eighth notes. Below the staff, there are some faint, illegible handwritten words.

Handwritten musical notation on a five-line staff. The notes are mostly quarter and eighth notes. Below the staff, there are some faint, illegible handwritten words.

Handwritten musical notation on a five-line staff. The notes are mostly quarter and eighth notes. Below the staff, there are some faint, illegible handwritten words.

Handwritten notes in the right margin, possibly indicating performance instructions or corrections. The text is partially obscured and difficult to read.

Handwritten musical notation on a five-line staff. The notation includes a treble clef, a key signature of one flat (B-flat), and a common time signature (C). The music consists of a series of notes and rests, with some notes beamed together. There are some annotations above the staff, possibly lyrics or performance instructions, which are partially illegible but appear to include "SHE AT THE P...".

Handwritten musical notation on a five-line staff. The notation includes a treble clef, a key signature of one flat (B-flat), and a common time signature (C). The music consists of a series of notes and rests, with some notes beamed together. There are some annotations above the staff, possibly lyrics or performance instructions, which are partially illegible but appear to include "SHE AT THE P...".

Handwritten musical notation on a five-line staff. The notation includes a treble clef, a key signature of one flat (B-flat), and a common time signature (C). The music consists of a series of notes and rests, with some notes beamed together. There are some annotations above the staff, possibly lyrics or performance instructions, which are partially illegible but appear to include "SHE AT THE P...".

Handwritten musical notation on a five-line staff. The notation includes a treble clef, a key signature of one flat (B-flat), and a common time signature (C). The music consists of a series of notes and rests, with some notes beamed together. There are some annotations above the staff, possibly lyrics or performance instructions, which are partially illegible but appear to include "SHE AT THE P...".

Handwritten musical notation on a single staff. The lyrics "Ti fte w ru a o n" are written above the notes. The notes are mostly quarter and eighth notes.

Handwritten musical notation on a single staff. The lyrics "A ru a o n" are written above the notes. The notes are mostly quarter and eighth notes.

Handwritten musical notation on a single staff. The lyrics "ti fte w ru a o n" are written above the notes. The notes are mostly quarter and eighth notes.

Handwritten musical notation on a single staff. The lyrics "a - a ru a o n" are written above the notes. The notes are mostly quarter and eighth notes.

Handwritten musical notation on a single staff. The lyrics "ti fte w ru a o n" are written above the notes. The notes are mostly quarter and eighth notes.

Handwritten musical notation on a single staff. The lyrics "Xo ru a o n" are written above the notes. The notes are mostly quarter and eighth notes.

Handwritten musical notation on a single staff. The lyrics "ti fte w ru a o n" are written above the notes. The notes are mostly quarter and eighth notes.

Handwritten musical notation on a single staff. The lyrics "ti fte w ru a o n" are written above the notes. The notes are mostly quarter and eighth notes.

Musical staff with notes and lyrics: *... ..*

Musical staff with notes and lyrics: *... ..*

Musical staff with notes and lyrics: *... ..*

Musical staff with notes and lyrics: *... ..*

Musical staff with notes and lyrics: *... ..*

Musical staff with notes and lyrics: *... ..*

Musical staff with notes and lyrics: *... ..*

Musical staff with notes and lyrics: *... ..*

Musical staff with notes and lyrics: *... ..*

Musical staff with notes and lyrics: *... ..*

Handwritten musical notation on a grand staff (treble and bass clefs). The music is in 2/4 time. The lyrics are: "An-ge-los in cae-les-ti-um, in ter-rae, in ma-ri-um, in om-ni-um, in om-ni-um, in om-ni-um, in om-ni-um." The notes are mostly quarter and eighth notes.

Handwritten musical notation on a grand staff. The lyrics are: "An-ge-los in cae-les-ti-um, in ter-rae, in ma-ri-um, in om-ni-um, in om-ni-um, in om-ni-um, in om-ni-um." The notation includes some dynamic markings like 'p' and 'f'.

Handwritten musical notation on a grand staff. The lyrics are: "An-ge-los in cae-les-ti-um, in ter-rae, in ma-ri-um, in om-ni-um, in om-ni-um, in om-ni-um, in om-ni-um." The notation includes some dynamic markings like 'p' and 'f'.

Handwritten musical notation on a grand staff. The lyrics are: "An-ge-los in cae-les-ti-um, in ter-rae, in ma-ri-um, in om-ni-um, in om-ni-um, in om-ni-um, in om-ni-um." The notation includes some dynamic markings like 'p' and 'f'.

Handwritten musical notation on a grand staff. The lyrics are: "An-ge-los in cae-les-ti-um, in ter-rae, in ma-ri-um, in om-ni-um, in om-ni-um, in om-ni-um, in om-ni-um." The notation includes some dynamic markings like 'p' and 'f'.

Handwritten musical notation on a grand staff. The lyrics are: "An-ge-los in cae-les-ti-um, in ter-rae, in ma-ri-um, in om-ni-um, in om-ni-um, in om-ni-um, in om-ni-um." The notation includes some dynamic markings like 'p' and 'f'.

Handwritten musical notation on a grand staff. The lyrics are: "An-ge-los in cae-les-ti-um, in ter-rae, in ma-ri-um, in om-ni-um, in om-ni-um, in om-ni-um, in om-ni-um." The notation includes some dynamic markings like 'p' and 'f'.

Handwritten musical notation on a grand staff. The lyrics are: "An-ge-los in cae-les-ti-um, in ter-rae, in ma-ri-um, in om-ni-um, in om-ni-um, in om-ni-um, in om-ni-um." The notation includes some dynamic markings like 'p' and 'f'.

Handwritten musical notation on a five-line staff, featuring a treble clef and a key signature of one sharp (F#). The notation includes a series of notes and rests, with some notes beamed together. A double bar line is present near the end of the staff.

Handwritten musical notation on a five-line staff, featuring a treble clef and a key signature of one sharp (F#). The notation includes a series of notes and rests, with some notes beamed together. A double bar line is present near the end of the staff.

Handwritten musical notation on a five-line staff, featuring a treble clef and a key signature of one sharp (F#). The notation includes a series of notes and rests, with some notes beamed together. A double bar line is present near the end of the staff.

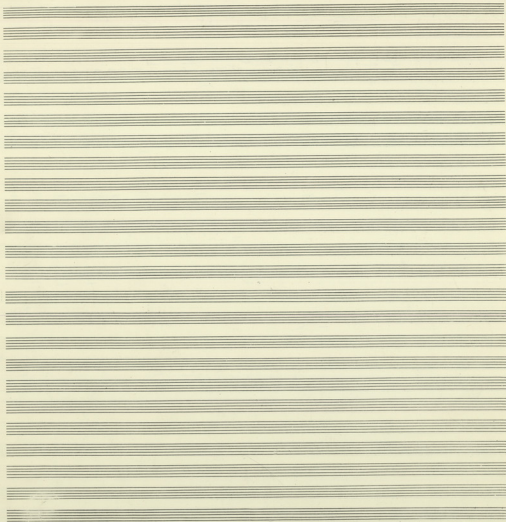
Handwritten musical notation on a five-line staff, featuring a treble clef and a key signature of one sharp (F#). The notation includes a series of notes and rests, with some notes beamed together. A double bar line is present near the end of the staff.

Handwritten musical notation on a five-line staff, featuring a treble clef and a key signature of one sharp (F#). The notation includes a series of notes and rests, with some notes beamed together. A double bar line is present near the end of the staff.

Handwritten musical notation on a five-line staff, featuring a treble clef and a key signature of one sharp (F#). The notation includes a series of notes and rests, with some notes beamed together. A double bar line is present near the end of the staff.

Handwritten musical notation on a five-line staff, featuring a treble clef and a key signature of one sharp (F#). The notation includes a series of notes and rests, with some notes beamed together. A double bar line is present near the end of the staff.

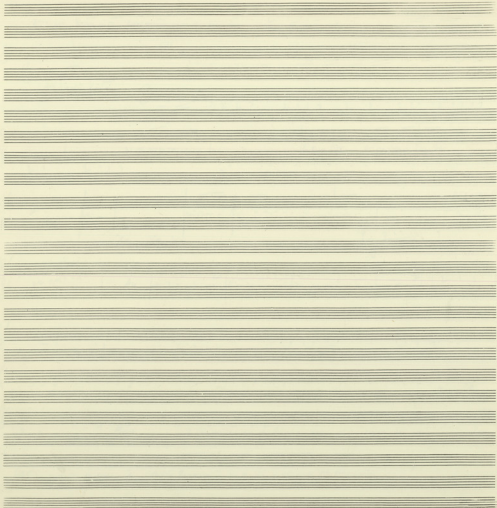
Handwritten musical notation on a five-line staff, featuring a treble clef and a key signature of one sharp (F#). The notation includes a series of notes and rests, with some notes beamed together. A double bar line is present near the end of the staff.

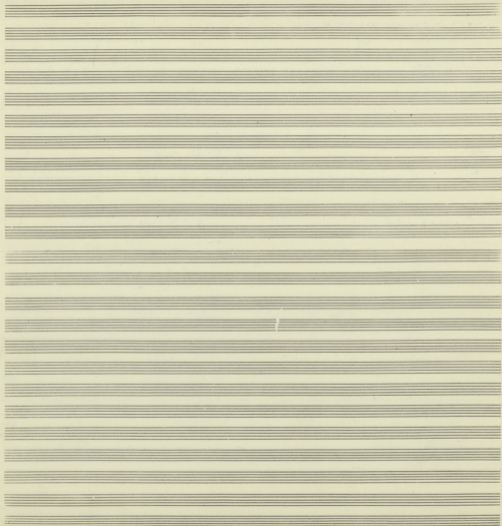


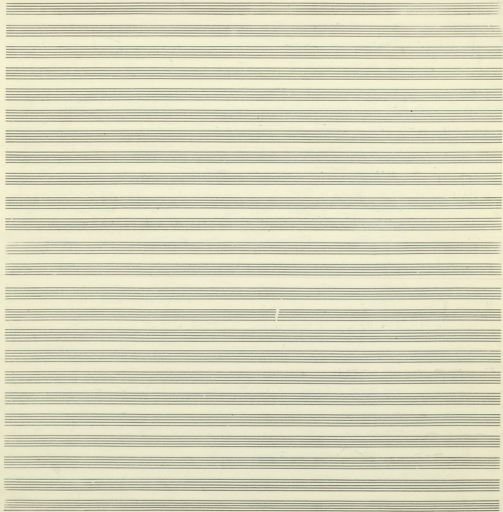
Handwritten musical notation on a single staff, including notes, rests, and a large scribble.

Handwritten musical notation on a single staff, including notes, rests, and a large scribble.

Multiple empty musical staves.





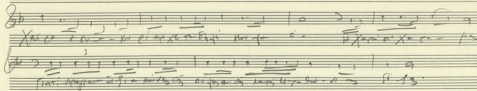


Handwritten musical notation on a single staff with a treble clef. The notation includes notes, rests, and bar lines. Below the staff, there is a line of handwritten text in a cursive script, likely representing lyrics or a transcription of the notes.

Handwritten musical notation, possibly a bass clef or a specific instruction, located at the beginning of the second staff.

A series of approximately 20 empty musical staves, each consisting of five horizontal lines, arranged vertically on the page.

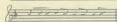
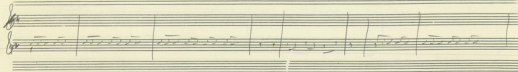
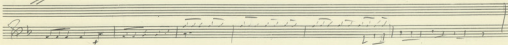
6 And. And. And. And. And. And.

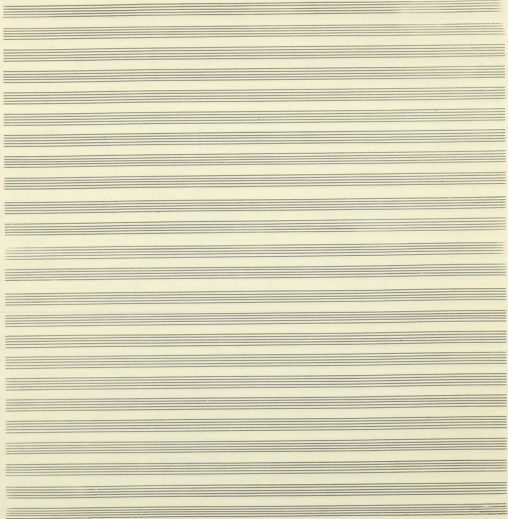


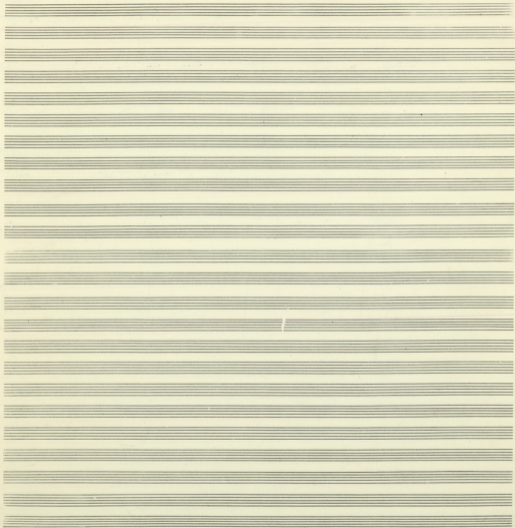
And. And.

And. And.

And. And.







fort

Al di là per mille anni di la se se via

Andante

Al di là per mille anni di la se se via

Andante

Al di là per mille anni di la se se via

Andante

Al di là per mille anni di la se se via

Andante

Al di là per mille anni di la se se via

Andante

Al di là per mille anni di la se se via

Andante

Al di là per mille anni di la se se via

Andante

Al di là per mille anni di la se se via

Handwritten musical notation for a final chord or measure, including a treble clef and a key signature of two flats.

A

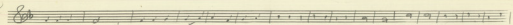
Handwritten musical score with 12 staves. The lyrics are in Spanish and appear to be a religious or liturgical text. The notation includes various musical symbols such as clefs, notes, rests, and bar lines. The lyrics are written below the notes.

1. *... de la tierra y del cielo ...*
 2. *... de la tierra y del cielo ...*
 3. *... de la tierra y del cielo ...*
 4. *... de la tierra y del cielo ...*
 5. *... de la tierra y del cielo ...*
 6. *... de la tierra y del cielo ...*
 7. *... de la tierra y del cielo ...*
 8. *... de la tierra y del cielo ...*
 9. *... de la tierra y del cielo ...*
 10. *... de la tierra y del cielo ...*
 11. *... de la tierra y del cielo ...*
 12. *... de la tierra y del cielo ...*

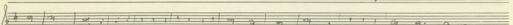
ANA

Handwritten musical notation at the bottom of the page, including a treble clef and several staves of notes.

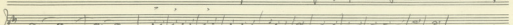
(2)



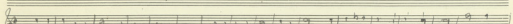
 Adagio del suo Tattura...



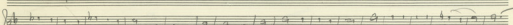
 ...



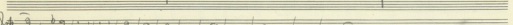
 ...



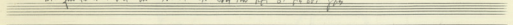
 ...



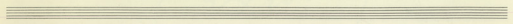
 ...




 ...



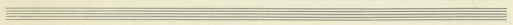
 ...



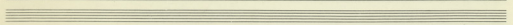
 ...



 ...



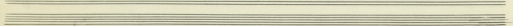
 ...



 ...



 ...



 ...

