

4 HIAN SWOLFE

2^a Piano
C BASS
X PIANO

④ HAN OMUPES

1

Handwritten musical score for the first system, featuring a vocal line and piano accompaniment. The vocal line is on a single staff with lyrics "Sa", "re", "Sa", "Sa", "re", "Sa", "re", "Sa". The piano accompaniment consists of three staves: Piano (P), Cello/Bass (Cb), and Keyboard (K). The time signature is 2/4. The key signature has one sharp (F#).

Handwritten musical score for the second system, featuring a vocal line and piano accompaniment. The vocal line is on a single staff with lyrics "Sa", "re", "Sa", "re", "Sa", "re", "Sa", "re", "Sa". The piano accompaniment consists of three staves: Piano (P), Cello/Bass (Cb), and Keyboard (K). The time signature is 2/4. The key signature has one sharp (F#).

Handwritten musical score for the third system, featuring a vocal line and piano accompaniment. The vocal line is on a single staff with lyrics "Sa", "re", "Sa", "re", "Sa", "re", "Sa", "re", "Sa". The piano accompaniment consists of three staves: Piano (P), Cello/Bass (Cb), and Keyboard (K). The time signature is 2/4. The key signature has one sharp (F#).

Handwritten musical score for the fourth system, featuring a vocal line and piano accompaniment. The vocal line is on a single staff with lyrics "Sa", "re", "Sa", "re", "Sa", "re", "Sa", "re", "Sa". The piano accompaniment consists of three staves: Piano (P), Cello/Bass (Cb), and Keyboard (K). The time signature is 2/4. The key signature has one sharp (F#).

4 Hran omoltes

-2-

28

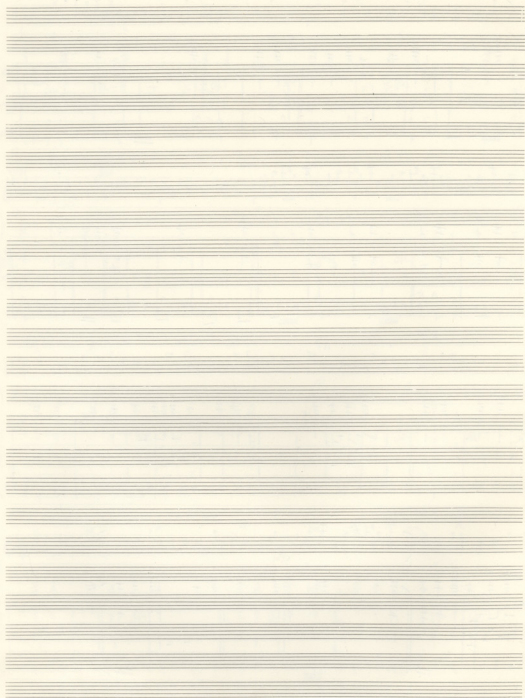
Xor.

Handwritten musical score for the first system of 'Hran omoltes'. It consists of a vocal line and a piano accompaniment. The vocal line is in 3/4 time and features a melody with various rhythmic values. The piano accompaniment is in 3/4 time and includes chords and a bass line. The word 'Sa' is written above the first two measures of the piano part.

Handwritten musical score for the second system of 'Hran omoltes'. It consists of a vocal line and a piano accompaniment. The vocal line continues the melody. The piano accompaniment includes chords and a bass line. The words 'Sa' and 'Xor.' are written above the piano part.

Handwritten musical score for the third system of 'Hran omoltes'. It consists of a vocal line and a piano accompaniment. The vocal line continues the melody. The piano accompaniment includes chords and a bass line. The words 'Sa' and 'Xor.' are written above the piano part.

Handwritten musical score for the fourth system of 'Hran omoltes'. It consists of a vocal line and a piano accompaniment. The vocal line continues the melody. The piano accompaniment includes chords and a bass line. The words 'Da' and 'Sa' are written above the piano part.

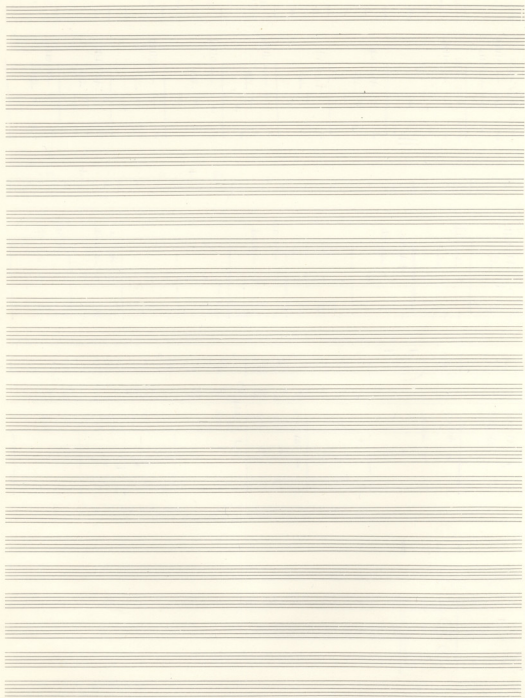


Handwritten musical score for the first system. It consists of a vocal line on a single staff and a piano accompaniment on three staves (treble, middle, and bass clefs). The piano part includes figured bass notation with numbers 1-5 and various accidentals. The music is in a 2/4 time signature.

Handwritten musical score for the second system, continuing the vocal and piano parts from the first system. The piano accompaniment continues with figured bass notation and includes some dynamic markings like 'p' and 'f'.

Handwritten musical score for the third system. The vocal line includes the lyrics: "ΠΑ - ΤΕΡ Α - ΓΙ - ΟΣ ΤΟΝ ΟΥΡΑΝΟΝ ΚΑΙ ΤΗΝ ΓΗΝ". The piano accompaniment continues with figured bass notation.

Handwritten musical score for the fourth system, showing the end of the piece. The vocal line has a final note, and the piano accompaniment concludes with a final chord in the bass clef.



3

ce ce LA

I mi si te - testes ve r / DO FA LA / fa mi sa ta ve ro -

S. mar te ro ce / LA / o ju - ven tu - ris

ti - viri / LA PA DO FA LA / ma i - na si - mus

Ag nes ta ce DO / LA PA DO FA LA / ce ce DO FA LA

Kris - ti - ni - spi - rit - u - sus / DO LA PA DO / ma i - na si - mus

ce DO / LA PA DO / ma i - na si - mus

ce DO / LA PA DO / ma i - na si - mus

ce DO / LA PA DO / ma i - na si - mus

ce DO / LA PA DO / ma i - na si - mus

ce DO / LA PA DO / ma i - na si - mus

4

FA DO Sib FA Sib DO

Ag nes ta ce DO / FA DO Sib FA Sib DO / ce ce DO FA LA

ce DO / FA DO Sib FA Sib DO / ma i - na si - mus

ce DO / FA DO Sib FA Sib DO / ma i - na si - mus

ce DO / FA DO Sib FA Sib DO / ma i - na si - mus

ce DO / FA DO Sib FA Sib DO / ma i - na si - mus

ce DO / FA DO Sib FA Sib DO / ma i - na si - mus

ce DO / FA DO Sib FA Sib DO / ma i - na si - mus

ce DO / FA DO Sib FA Sib DO / ma i - na si - mus

ce DO / FA DO Sib FA Sib DO / ma i - na si - mus

ce DO / FA DO Sib FA Sib DO / ma i - na si - mus

2B ΔΑΔ ΚΙΣΑΟ ΤΑΜΒΙΣ ΜΑ

Allegro

Soprano

Alto

Tenore

Basso

Po-ta-ri-pa-ri e-tar-ri po-ta-ri-pa-ri
 h-va-ri-pa-ri h-va-ri-pa-ri
 Tò- va-ri-pa-ri h-

h-va-ri-pa-ri h-va-ri-pa-ri
 h-va-ri-pa-ri h-va-ri-pa-ri
 h-va-ri-pa-ri h-va-ri-pa-ri
 h-va-ri-pa-ri h-va-ri-pa-ri

pu-er-ri-fo-ri po-ri h-va-ri-pa-ri
 h-va-ri-pa-ri h-va-ri-pa-ri
 h-va-ri-pa-ri h-va-ri-pa-ri
 h-va-ri-pa-ri h-va-ri-pa-ri

h-va-ri-pa-ri h-va-ri-pa-ri
 h-va-ri-pa-ri h-va-ri-pa-ri
 h-va-ri-pa-ri h-va-ri-pa-ri
 h-va-ri-pa-ri h-va-ri-pa-ri

h-va-ri-pa-ri h-va-ri-pa-ri
 h-va-ri-pa-ri h-va-ri-pa-ri
 h-va-ri-pa-ri h-va-ri-pa-ri
 h-va-ri-pa-ri h-va-ri-pa-ri

Handwritten musical score system 1. It consists of a vocal line and a piano accompaniment. The vocal line has lyrics: "mai oppo- gi- do". The piano accompaniment includes dynamic markings like *p* and *f*, and performance instructions like *Tempo*.

Handwritten musical score system 2. It continues the vocal and piano parts. The vocal line has lyrics: "Kai - f...". The piano accompaniment features complex rhythmic patterns and dynamic markings.

Handwritten musical score system 3. The vocal line includes lyrics: "Kai - f...". The piano accompaniment continues with intricate fingerings and dynamics.

Handwritten musical score system 4. The vocal line has lyrics: "va - jo". The piano accompaniment maintains the musical texture with various articulations.

Handwritten musical score system 5. The vocal line has lyrics: "Kai - f...". The piano accompaniment concludes the system with sustained chords and melodic lines.

Handwritten musical score, system 1. It features three staves: a vocal line at the top, a piano accompaniment in the middle, and a bass line at the bottom. The music is in 2/4 time. The vocal line contains lyrics in a non-Latin script, possibly Persian or Urdu. The piano part includes chords and rhythmic patterns. The bass line provides a steady accompaniment.

Handwritten musical score, system 2. It continues the composition from the first system. The vocal line and piano accompaniment maintain their respective parts, with the lyrics continuing. The notation is consistent with the first system, showing a continuation of the melodic and harmonic ideas.

Handwritten musical score, system 3. This system shows further development of the piece. The vocal melody moves through various intervals, and the piano accompaniment provides harmonic support. The lyrics are still present in the vocal line.

Handwritten musical score, system 4. The fourth system of the piece, featuring the same three-staff layout. The vocal line and piano accompaniment continue their parts. The lyrics in the vocal line are still legible.

Handwritten musical score, system 5. The final system on this page. It concludes with a double bar line. The vocal line and piano accompaniment reach their final notes. The lyrics in the vocal line are also present.

Handwritten musical notation on a single staff, including a treble clef, a key signature of one sharp (F#), and a 2/4 time signature. The notation consists of several measures of music with notes and rests, ending with a double bar line.

Handwritten musical notation on a single staff, including a treble clef, a key signature of one sharp (F#), and a 2/4 time signature. The notation consists of a few notes and rests, ending with a double bar line.

Indica: To N° 7 aus Japad in ADACCIAO N° 3 (ritmo)