

Handwritten musical notation on two staves. The top staff has a treble clef and contains a sequence of notes with accidentals (sharps and flats) and stems. The bottom staff has a bass clef and contains notes with stems and accidentals. The notation is somewhat scribbled and appears to be a sketch.

Handwritten musical notation on two staves. The top staff has a treble clef and contains notes with stems and accidentals, including a large, dense cluster of notes. The bottom staff has a bass clef and contains notes with stems and accidentals, including a large, dense cluster of notes. The notation is somewhat scribbled and appears to be a sketch.

Handwritten musical notation on two staves. The top staff has a treble clef and contains notes with stems and accidentals, including a large, dense cluster of notes. The bottom staff has a bass clef and contains notes with stems and accidentals, including a large, dense cluster of notes. The notation is somewhat scribbled and appears to be a sketch.

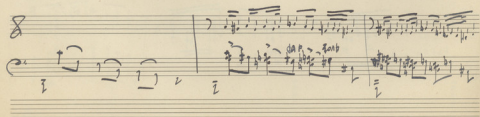
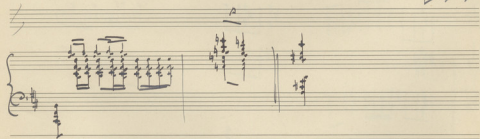
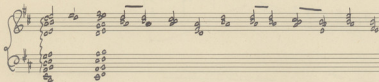
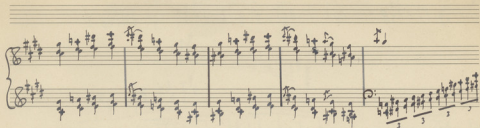
Handwritten musical notation on a grand staff (treble and bass clefs). The music features a melodic line in the treble clef and a supporting line in the bass clef. The notation includes various note values, rests, and a large slur spanning across several measures.

Handwritten musical notation on a grand staff. This system continues the piece with similar melodic and harmonic structures. It includes a treble clef staff with a melodic line and a bass clef staff with chords and bass notes.

Handwritten musical notation on a grand staff. This system shows a change in texture, with the treble clef staff featuring more complex, possibly arpeggiated or broken chord figures, while the bass clef staff continues with a steady harmonic accompaniment.

Handwritten musical notation on a grand staff. This system includes a treble clef staff with a melodic line and a bass clef staff with a series of chords. A double bar line is present, indicating the end of a phrase or section.

Handwritten musical notation on a grand staff. This system features a treble clef staff with a melodic line and a bass clef staff with a complex, multi-measure rest or chordal structure. The notation includes a '3' above a measure, suggesting a triplet or a three-measure rest. The piece concludes with a final chord in the bass clef.



Handwritten musical notation on two staves. The top staff features a melodic line with a fermata and a slur. The bottom staff contains dense chordal accompaniment with many accidentals and a circled section.

Handwritten musical notation on two staves. The bottom staff includes dynamic markings such as *ppp* and *pp*, and a large diagonal slash through the right side of the staff.

Handwritten musical notation on two staves. The top staff is marked *Meno* and contains several measures of music. The bottom staff has a circled section and a vertical line with a wavy arrow pointing downwards.

Handwritten musical notation on two staves. The bottom staff features a circled section and a vertical line with a wavy arrow pointing downwards, similar to the previous system.



Handwritten musical notation for the first system, featuring a grand staff with treble and bass clefs. The music consists of several measures of chords and melodic lines.

Handwritten musical notation for the second system. It includes a grand staff with treble and bass clefs on the left, and a single treble clef staff on the right. The notation shows complex chordal structures and melodic fragments.

Handwritten musical notation for the third system, featuring a grand staff with treble and bass clefs. The music is characterized by dense chordal textures and rhythmic patterns.

Handwritten musical notation for the fourth system. It includes a grand staff with treble and bass clefs on the left, and a single treble clef staff on the right. The notation shows complex chordal structures and melodic fragments.

Handwritten musical notation for the fifth system, featuring a grand staff with treble and bass clefs. The music consists of several measures of chords and melodic lines.

Two empty musical staves at the bottom of the page, consisting of five-line staves without any notation.

Handwritten musical score system 1, featuring a treble and bass clef. The music consists of several measures with complex chordal textures. A large 'X' is drawn over the first three measures. The word 'sf' is written below the first measure, and a large 'A' is written above the fourth measure.

Handwritten musical score system 2, featuring a treble and bass clef. The music continues with complex chordal textures. A large 'A' is written above the final measure of the system.

Handwritten musical score system 3, featuring a treble and bass clef. The music continues with complex chordal textures. The notation is dense with many notes and accidentals.

Handwritten musical score system 4, featuring a treble and bass clef. The music continues with complex chordal textures. There is a large scribble in the treble clef staff in the second measure.

Handwritten musical score system 5, featuring a treble clef. The music continues with complex chordal textures.

Handwritten musical notation on a grand staff. The left hand (bass clef) plays a simple accompaniment with chords and single notes. The right hand (treble clef) features a complex melodic line with many beamed notes and some slurs. The piece concludes with a double bar line and a flourish.

Handwritten musical notation on a grand staff. The left hand continues with a steady accompaniment. The right hand has a more active melodic line with frequent sixteenth-note patterns. The piece ends with a double bar line and a flourish.

Handwritten musical notation on a grand staff. The left hand accompaniment remains consistent. The right hand features a melodic line with many beamed notes, creating a dense texture. The piece ends with a double bar line and a flourish.

Handwritten musical notation on a grand staff. The left hand accompaniment is steady. The right hand has a melodic line with many beamed notes, similar to the previous system. The piece ends with a double bar line and a flourish.

Handwritten musical notation on a grand staff. The left hand accompaniment is steady. The right hand has a melodic line with many beamed notes. The piece ends with a double bar line and a flourish. There is a handwritten note "P. 2. 1. 2." in the upper right corner of this system.