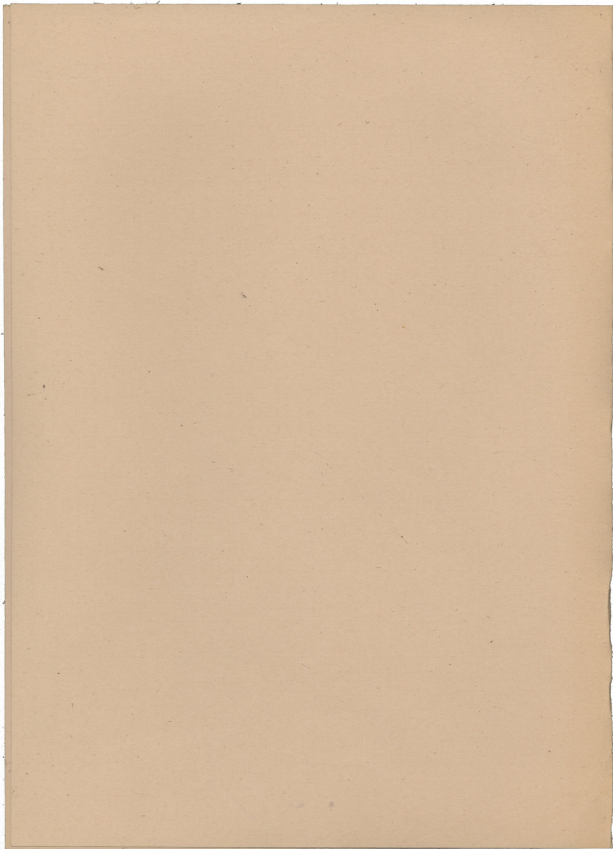


Handwritten

ÉRD. RA. OLX+ETPA HAI NITRO  
(Anonima)

42



II

Andante con moto



1 Flûte 3/4

2 Flûtes 4

2 Clarinettes (in B) 3/4

2 Bassons 3/4

3 Cors 3/4

2 Trompes (in D) 3/4 p

2 Trompes 3/4 p

Tympani 3 pp

Batterie Temp. Militaire p

Piano-Forte 3/4 pp

Andante con moto

Violini I 3/4 p

Violini II 3/4 p

Alti 3/4 p

Violoncelli 3/4 p

Contrebasse 3/4 p

H. 100 100 - - - - - C. 100 100 100 - - - - -



Handwritten musical score for piano and voice. The score is written on multiple staves. The top system includes a circled number '10' and dynamic markings such as *mf* *rit.* and *f*. The middle system contains the vocal line with lyrics: "ca. sad.", "ca. sad.", and "ca. sad.". Below the vocal line, there are piano accompaniment staves with dynamic markings *p*, *f*, *p*, *f*, *p*, *f*. The bottom system includes a grand staff with piano accompaniment and dynamic markings *mf* *rit.* and *f*. The score is written in a cursive, handwritten style.

20

Fl. 1  
Fl. 2  
Ob.  
Clas. 1  
Clas. 2  
Fg.

Cor. 1 & 2  
Cor. 3  
Tpt. 1  
Tpt. 2  
Tpt. 3 & 4

Timp.  
T.Mit.

Piano

Viol. I  
Viol. II  
Alti.  
Viol. III  
Cb.

Handwritten notes and markings at the bottom of the page, including a signature and some illegible text.



This page contains a handwritten musical score for a multi-instrument ensemble. The score is organized into several systems of staves. The top system includes five staves, likely for woodwinds and strings. The middle system features a grand staff (piano and violin/viola) and a bass line. The bottom system includes a grand staff and a bass line. The score is marked with a circled '25' at the beginning and a 'p' (piano) dynamic marking. There are various musical notations, including notes, rests, and articulation marks. A 'cresc.' (crescendo) marking is visible in the middle system. The bottom right corner of the score has a 'p' marking and some handwritten notes.

30 *f*

Fl. *dim...*

Ob.

Cl.

Fg.

Viol. I *mf* *casual*

Viol. II *mf* *p cresc.*

Trp. I *mf* *(Sempres en crochets)*

Trp. II *mf* *p cresc.*

Piano *mf* *p cresc.*

Viol. I *mf*

Viol. II *mf*

Alt. *mf*

Viol. I *mf*

Viol. II *mf*

Cell. *mf* *p cresc.*

*mf* *p cresc.*



35

p

Violins I  
Violins II  
Violas  
Flutes  
Clarinets

Violins I  
Violins II  
Violas  
Flutes  
Clarinets

Violins I  
Violins II  
Violas  
Flutes  
Clarinets

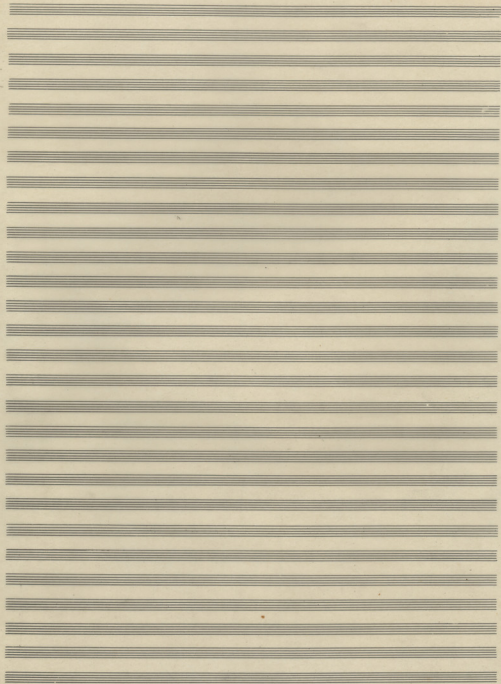
Violins I  
Violins II  
Violas  
Flutes  
Clarinets

Violins I  
Violins II  
Violas  
Flutes  
Clarinets

Violins I  
Violins II  
Violas  
Flutes  
Clarinets

Violins I  
Violins II  
Violas  
Flutes  
Clarinets

1:45



Andante con moto

3 CORNI

32  
21  
41  
Gesand

pp

Andante con moto

PIANO SOLO

dec. F

2 Clarin.  
Cl. in D  
2 Fag.

Musical notation for Clarinet and Bassoon parts, including dynamics like mf and accents.

I & II  
Trombe  
II  
Tuba

FF

On Solo.

F

PIANO SOLO

Contrab.

Pia. Solo 4  
F



Handwritten musical score for a symphony orchestra, page 3. The score is arranged in a system with staves for various instruments and voices. The key signature is one flat (B-flat), and the time signature is 3/4. The score is marked with a tempo of *Allegro* at the top.

The instruments and parts shown are:

- Fl. (Flute)
- Oboe (Oboe)
- Clarinet (Clarinet)
- Fg. (Fagotto / Bassoon)
- Corno I (Corno I)
- Corno II (Corno II)
- 3 Trombe (3 Trombones)
- Tutti II (Tutti II)
- Tutti III (Tutti III)
- Tuba
- Piano Solo (Piano Solo)
- Violini I (Violini I)
- Violini II (Violini II)
- Alti (Alti / Violi)
- Celli (Celli / Violoncelli)
- Contrabbassi (Contrabbassi / Double Basses)

The score features complex rhythmic patterns, including sixteenth and thirty-second notes, and dynamic markings such as *mf*, *p*, and *f*. The bottom of the page shows empty staves for the strings.

2<sup>a</sup> Fl. *F*

Oboi *FF*

Clar. *F*

Fag. *F*

Cori I & II *F*

3 Trombe *F*

Trombe II & III *F*

Tuba *FF*

Piano Solo *FF*

Violini I *FF*

Violini II

Alti *F*

Violoncelli

Contrabassi *F*

*Sua* *32*





