

Tromp.

Organo

Il

Vcllo

Vel

Dim.

Violoncello

Viola

Violino

Violoncello

Violino

Violoncello

Viola

Violino

Violoncello

sen LA LA . So Do ce

Handwritten musical notation for the first system, including a treble clef, a key signature of one flat, and a 3/4 time signature. The notation consists of a vocal line and a piano accompaniment line with chords and arpeggios.

Handwritten musical notation for the second system, featuring a 3/4 time signature and a "Basso" marking. The notation includes a vocal line and a piano accompaniment line with a "Basso" section.

Handwritten musical notation for the third system, including a bass clef and a "Canto" marking. The notation consists of a vocal line and a piano accompaniment line.

Canto

sol ce re la a la 2 re u l

mi re la ce

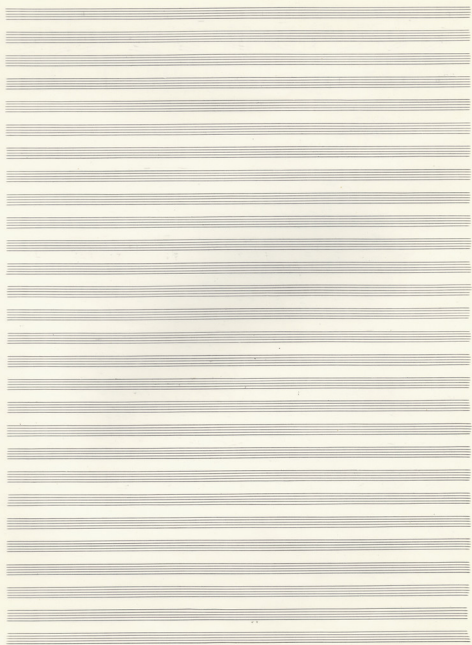
ce Do cel st Do Stare do sel PA Sio do ^{redon sel} ^{sal}

do sio PA st sel PA sel PA Sio do ce sel sel fa mio

ce PA mio sio do do sel fa Mio Do Mio ce

Do sel la ce ce Mio PA Mio Sio do sio do sio do ce

19 19 1 1 1 1



Handwritten musical notation on a system of staves. The top staff contains a sequence of notes: $\frac{8}{2}$, $\frac{1}{2}$, $\frac{1}{2}$, $\frac{1}{2}$, $\frac{1}{2}$, $\frac{1}{2}$, $\frac{1}{2}$, $\frac{1}{2}$, $\frac{1}{2}$, $\frac{1}{2}$. The second staff contains a complex rhythmic pattern with slanted lines and notes. The third and fourth staves are empty.

Handwritten musical notation on a system of staves. The top staff contains a sequence of notes: $\frac{8}{2}$, $\frac{1}{2}$, $\frac{1}{2}$, $\frac{1}{2}$, $\frac{1}{2}$, $\frac{1}{2}$, $\frac{1}{2}$, $\frac{1}{2}$, $\frac{1}{2}$, $\frac{1}{2}$. The second staff contains a complex rhythmic pattern with slanted lines and notes. The third and fourth staves are empty.

Handwritten musical notation on a system of staves. The top staff contains a sequence of notes: $\frac{8}{2}$, $\frac{1}{2}$, $\frac{1}{2}$, $\frac{1}{2}$, $\frac{1}{2}$, $\frac{1}{2}$, $\frac{1}{2}$, $\frac{1}{2}$, $\frac{1}{2}$, $\frac{1}{2}$. The second staff contains a complex rhythmic pattern with slanted lines and notes. The third and fourth staves are empty.

Handwritten musical notation on a grand staff. The top staff contains a melodic line with notes and rests. The bottom staff contains the lyrics: *si se le le se se le le*.

Handwritten musical notation for three instruments: *Klarin. 1* (Clef: F), *Klar. 2* (Clef: F), and *Contr.* (Clef: C). The *Contr.* part includes a *9* (ninth) interval marking.

Handwritten musical notation on a grand staff, continuing the melodic and accompaniment lines from the first system.

Handwritten musical notation for a full orchestra. The *Viol. I* part is marked *con sord.* (con sordina). The lyrics *le sin PA st u h ce ce ad hore* are written below the staves. The instruments shown include *Fl.*, *Klarin. 1*, *Klar. 2*, *Viol. I*, *Viol. II*, and *Org.*

Handwritten musical notation for a chamber ensemble. The lyrics *ce - se - lu lat ce mit ce mit e h u h ce ce Do St h u h* are written above the staves. The instruments shown include *Fl.*, *Klar.*, *Klar.*, *Viol.*, and *Co.*

Handwritten musical notation at the bottom of the page, including a *Viol.* part and a *Co.* part.

Monday, 4

Klarin. A
Horn

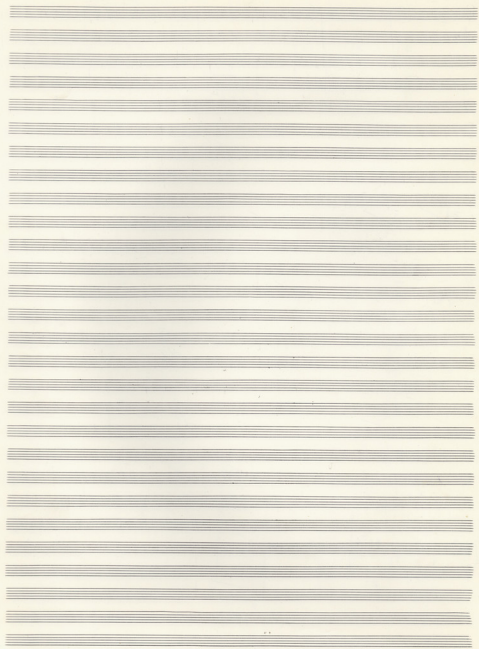
Trombo
Wahl

Handwritten musical score for Clarinet A, Horn, Trombone, and Wahl. The score is written on five staves. The top staff is for Clarinet A, the second for Horn, the third for Trombone, and the fourth for Wahl. The music is in 2/4 time and features various rhythmic patterns and dynamics. There are some annotations above the staves, including a large 'A' and some smaller markings.

Clarin.

Wahl

Handwritten musical score for Clarinet and Wahl. The score is written on five staves. The top staff is for Clarinet, the second for Wahl, the third for Wahl, the fourth for Wahl, and the fifth for Wahl. The music is in 2/4 time and features various rhythmic patterns and dynamics. There are some annotations above the staves, including a large 'A' and some smaller markings.



re re do re se sol FA el re DO (5) el do Si re do sol Si do sol

Si do do Si do FA re do re el el sol FA el re do re se sol FA

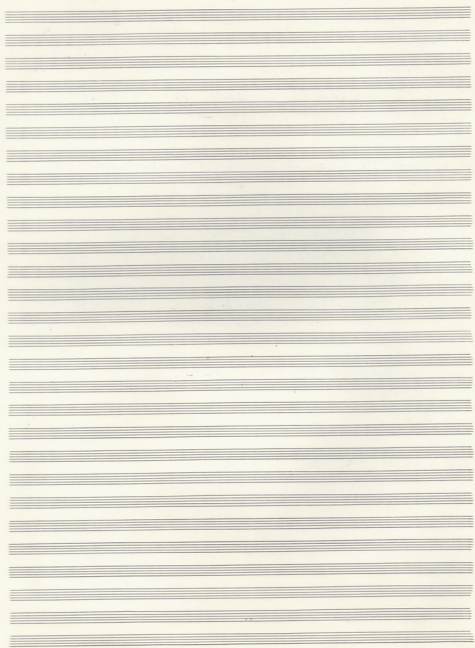
(15) el re do FA Si do re sol do re sol el FA Mi re do re el FA Mi re

(20) do el do re do sol FA Mi re do FA Mi re do re la re ce Do alla

(30) sol el la la la re re el do do el re do FA Mi re do Si do

re do re re sol do FA el re do re

IMPORTANTE 50



Handwritten musical score for voice and piano. The vocal line is written in treble clef with lyrics: "ce ————— Do FA — . Sio LA ce + ce". The piano accompaniment is in the right hand, with some notes in the left hand. The music is in 2/4 time and features a key signature of one flat (Bb).

Handwritten musical score for piano. It consists of two systems of staves. The first system shows the right hand with a complex rhythmic pattern and the left hand with a simpler accompaniment. The second system continues the piece with similar textures.

Handwritten musical score for piano, consisting of a single system of staves. The right hand has a melodic line with some grace notes, while the left hand provides a steady accompaniment.

Handwritten musical score for violin and cello. The notation is labeled "Viol. / Cello" and is written in a single system. The music is in 2/4 time and features a key signature of one flat (Bb).

Handwritten musical score for piano, consisting of a single system of staves. The right hand has a melodic line with some grace notes, while the left hand provides a steady accompaniment.

Handwritten musical score for piano, consisting of a single system of staves. The right hand has a melodic line with some grace notes, while the left hand provides a steady accompaniment.

Handwritten musical notation on a grand staff. The upper staff contains a melodic line with a fermata over the first measure and a '6' above the staff. The lower staff contains a bass line with a fermata over the first measure. The notation is dense and includes various rhythmic values and accidentals.

Handwritten musical notation on a grand staff. The upper staff contains a melodic line with a fermata over the first measure and the letters 'LA' written above it. The lower staff contains a bass line with a fermata over the first measure. The notation includes various rhythmic values and accidentals.

Handwritten musical notation on a grand staff. The upper staff contains a melodic line with a fermata over the first measure and the letters 'LA' written above it. The lower staff contains a bass line with a fermata over the first measure. The notation includes various rhythmic values and accidentals.

Handwritten musical notation on a grand staff. The upper staff contains a melodic line with a fermata over the first measure and the letters 'Aronov' written above it. The lower staff contains a bass line with a fermata over the first measure. The notation includes various rhythmic values and accidentals.

Handwritten musical notation on a grand staff. The upper staff contains a melodic line with a fermata over the first measure and the letters 'Tom' written above it. The lower staff contains a bass line with a fermata over the first measure. The notation includes various rhythmic values and accidentals.

Handwritten musical notation on a grand staff. The upper staff contains a melodic line with a fermata over the first measure and the letters 'Gang' written above it. The lower staff contains a bass line with a fermata over the first measure. The notation includes various rhythmic values and accidentals.