

MARTE 1954-59

18 19 3

10 2 8 4 6
1 9 3 7 5

EXERCICE

(MUSIQUE ÉCRITE PAR MARTIN)

(EXERCICE)

(MILKA ZEVITA)

Handwritten musical notation for the first system, featuring a treble and bass clef with complex rhythmic patterns.

Handwritten musical notation for the second system, including a section labeled 'A' and various musical notations.

Handwritten musical notation for the third system, showing dense chordal textures in both staves.

Handwritten musical notation for the fourth system, featuring complex rhythmic patterns and a double bar line.

Handwritten musical notation for the fifth system, including a treble clef and complex rhythmic patterns.

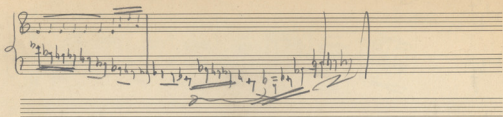
Handwritten musical notation for the sixth system, showing complex rhythmic patterns and a double bar line.

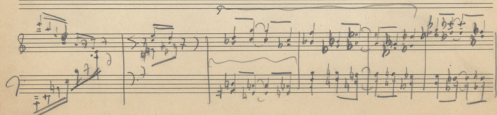
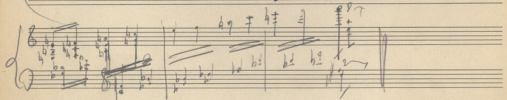
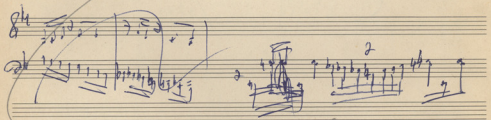
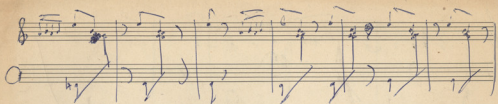
Handwritten musical notation on two staves. The top staff begins with a treble clef, a key signature of one sharp (F#), and a 3/4 time signature. A large handwritten 'S' is written above the staff. The notation includes several measures of music, ending with a double bar line.

Handwritten musical notation on two staves. The top staff begins with a treble clef and a key signature of one flat (Bb). The notation consists of several measures of music, primarily using chords and some melodic lines, ending with a double bar line.

Handwritten musical notation on two staves, enclosed in a large hand-drawn oval. The top staff begins with a treble clef and a key signature of one flat (Bb). The notation shows a melodic line with eighth and sixteenth notes. The bottom staff shows a corresponding bass line with eighth and sixteenth notes.

Seven empty musical staves, each consisting of five horizontal lines, arranged vertically on the page.





Handwritten musical notation on a grand staff. The top staff has a treble clef and contains a series of chords and notes, including a five-measure rest. The bottom staff has a bass clef and contains rhythmic notation with stems and beams. The notation is somewhat sketchy and appears to be a preliminary draft.

Handwritten musical notation on a grand staff. The top staff has a treble clef and contains a melodic line with eighth and sixteenth notes. The bottom staff has a bass clef and contains a bass line with notes and rests. There are some annotations like 'b' and 'g' written below the notes.

Handwritten musical notation on a grand staff. The top staff has a treble clef and contains a melodic line with notes and rests. The bottom staff has a bass clef and contains a bass line with notes and rests. There are some annotations like 'b' and 'g' written below the notes.

A series of ten empty musical staves, arranged vertically, occupying the lower half of the page. They are blank, with no notation or markings.

This page contains five systems of handwritten musical notation. The notation is dense and complex, featuring a variety of rhythmic patterns and chordal structures. The first system consists of two staves with a treble clef on the upper staff and a bass clef on the lower staff. The second system also has two staves, with a treble clef on the upper staff and a bass clef on the lower staff. The third system has two staves, with a treble clef on the upper staff and a bass clef on the lower staff. The fourth system has two staves, with a treble clef on the upper staff and a bass clef on the lower staff. The fifth system has two staves, with a treble clef on the upper staff and a bass clef on the lower staff. The notation includes many slurs, ties, and complex rhythmic figures. There are also some markings that look like 'x' or 'F' on the lower staves. The paper is aged and yellowed, with some ink bleed-through from the reverse side.

Handwritten musical notation on a five-line staff. The first measure contains a complex chordal structure with many notes. The second measure is crossed out with a large 'X'. The third and fourth measures contain rhythmic patterns with notes and stems.

Handwritten musical notation on a five-line staff. The first measure has a few notes. The second measure is a long horizontal line with some markings below it. The third and fourth measures contain rhythmic patterns with notes and stems.

Handwritten musical notation on a five-line staff. The first measure has a circled note. The second measure is crossed out with a large 'X'. The third and fourth measures contain rhythmic patterns with notes and stems. A "3/8" time signature is written above the third measure.

Handwritten musical notation on a five-line staff. The first measure has a circled note. The second measure is crossed out with a large 'X'. The third and fourth measures contain rhythmic patterns with notes and stems. A "3/8" time signature is written above the third measure. The fifth measure contains a circled chordal structure.

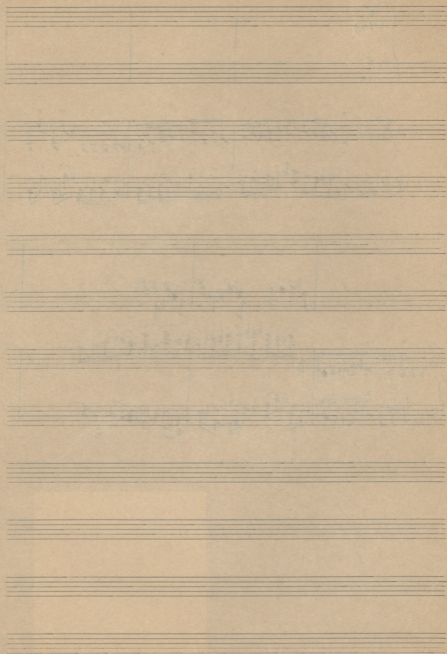
Finis

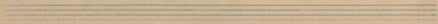
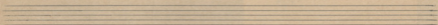
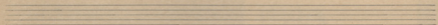
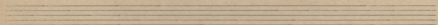
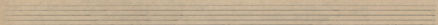
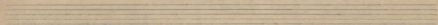
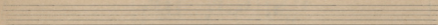
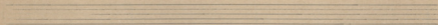
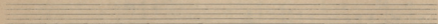
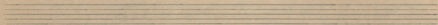
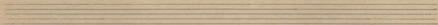
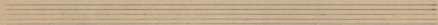
Handwritten musical notation for two staves. The top staff is in treble clef and the bottom staff is in bass clef. Both staves are marked with a time signature of 8/16. The staves are currently empty, showing only the clefs and the time signature.

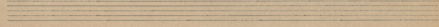
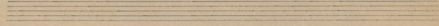
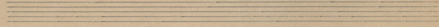
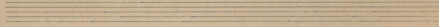
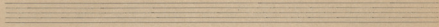
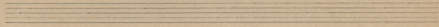
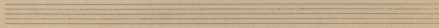
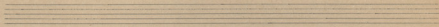
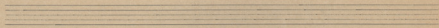
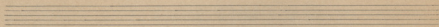
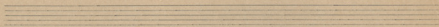
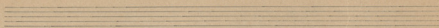
Handwritten musical notation for two staves in 8/16 time. The top staff (treble clef) contains a melodic line with eighth and sixteenth notes, including some beamed eighth notes. The bottom staff (bass clef) contains a rhythmic accompaniment with eighth notes and rests. The music is divided into three measures by vertical bar lines.

Handwritten musical notation for two staves in 8/16 time. The top staff (treble clef) features a complex melodic line with many beamed notes and some accidentals. The bottom staff (bass clef) has a rhythmic accompaniment with eighth notes and rests. The music is divided into three measures by vertical bar lines.

Four empty musical staves, each consisting of five horizontal lines, arranged vertically. They are currently blank.







Φ7

17

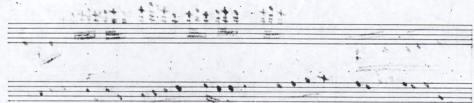
ΜΙΕΡΗ ΣΟΥΙΤΑ ΓΙΑ ΠΙΑΝΟ

(Συνολ.) 1948 Τραγούδια
Τραγούδια 4

TOMOS B

TOMOS ΔΕΥΤΕΡΟΣ

ΣΠΕΡΜΑΤΕΣ



УИКАП
ЗОВИТА ДУ
АЛАН

ГАИТАНАКИ

1) Poco All. Sempre staccatissimo



Polono byrdain 4/4-3-1

Handwritten musical notation for the first system. It consists of two staves: a treble clef staff and a bass clef staff. The treble staff contains a series of chords, with some notes marked with a 'b' (flat). The bass staff contains a series of eighth notes. The system is divided into five measures. The fourth and fifth measures have the markings 'dim.' and 'molto' written above them.

Handwritten musical notation for the second system. It consists of two staves: a treble clef staff and a bass clef staff. The treble staff contains a series of chords, with some notes marked with a 'b' (flat). The bass staff contains a series of eighth notes. The system is divided into five measures. The first measure has the marking 'ppp' below it. The second measure has the marking 'F subito' below it. The third measure has the marking 'Al... A)' above it. The fourth and fifth measures are marked with a double bar line and a large 'X' over the staff, with the date '1948' written below them.

Empty musical staff.

Handwritten musical notation for the third system, consisting of a single treble clef staff with a series of notes and rests.

Handwritten musical notation for the fourth system, consisting of a single treble clef staff with a series of notes and rests.

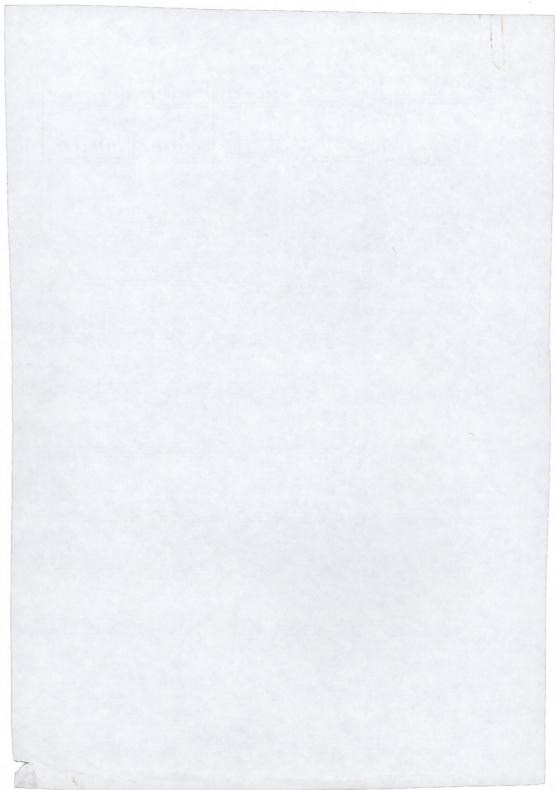
Handwritten musical notation for the fifth system, consisting of a single treble clef staff with a series of notes and rests.

Empty musical staff.

Empty musical staff.

Empty musical staff.

Empty musical staff.



Του νεύρου ιδιότητος

ιδιότητος νεύρου