

①

Handwritten musical notation for the first system, consisting of two staves with treble and bass clefs. The notation includes various note values and rests.

Handwritten musical notation for the second system, consisting of two staves with treble and bass clefs. The notation includes various note values and rests.

Handwritten musical notation for the third system, consisting of two staves with treble and bass clefs. The notation includes various note values and rests.

sim

Handwritten musical notation for the fourth system, consisting of two staves with treble and bass clefs. The notation includes various note values and rests.

Handwritten musical notation for the fifth system, consisting of two staves with treble and bass clefs. The notation includes various note values and rests.

Handwritten musical notation for the sixth system, consisting of two staves with treble and bass clefs. The notation includes various note values and rests.

- 2 Corni
- 1 Clar
- 1 ab.
- 1 fl
- 1 Fag

Handwritten musical notation for the first system. It consists of two staves: a treble clef staff on top and a bass clef staff on the bottom. The treble staff contains a sequence of notes, including a half note followed by a quarter note, and a triplet of eighth notes. The bass staff contains a sequence of notes, including a half note followed by a quarter note, and a triplet of eighth notes. There are some markings above the treble staff, including a circled 'A' and a circled 'B'.

Handwritten musical notation for the second system. It consists of two staves: a treble clef staff on top and a bass clef staff on the bottom. The treble staff contains a sequence of notes, including a half note followed by a quarter note, and a triplet of eighth notes. The bass staff contains a sequence of notes, including a half note followed by a quarter note, and a triplet of eighth notes. There are some markings above the treble staff, including a circled 'A' and a circled 'B'.

Handwritten musical notation for the third system. It consists of two staves: a treble clef staff on top and a bass clef staff on the bottom. The treble staff contains a sequence of notes, including a half note followed by a quarter note, and a triplet of eighth notes. The bass staff contains a sequence of notes, including a half note followed by a quarter note, and a triplet of eighth notes. There are some markings above the treble staff, including a circled 'A' and a circled 'B'.

①

A handwritten musical score on aged, yellowed paper. The score is written in a cursive style and consists of ten systems of music. Each system typically contains three staves. The first system is circled in a large, hand-drawn circle. The notation includes various note values, rests, and bar lines. The paper shows signs of age, including some staining and discoloration.

5

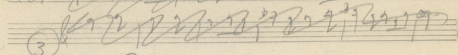
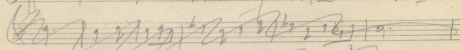
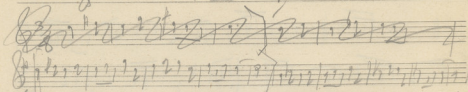
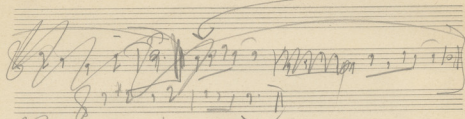
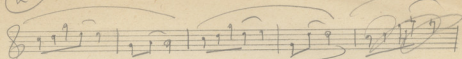
Handwritten musical notation for system 5, consisting of two staves. The top staff begins with a circled number '5' and contains several measures of music with notes and rests. The bottom staff continues the notation with similar rhythmic patterns.

A single staff of handwritten musical notation, likely a continuation of the previous system, showing notes and rests.

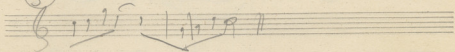
2

Handwritten musical notation for system 2, consisting of five staves. The first staff is marked with a circled number '2' and a large 'X' over it. The subsequent staves contain musical notation with notes, rests, and some dynamic markings.

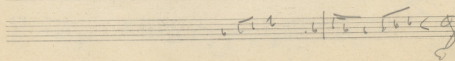
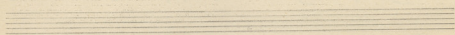
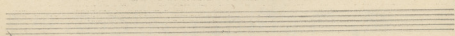
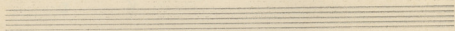
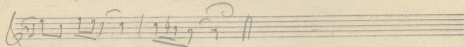
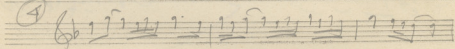
2



3



4



Handwritten musical notation on a single staff, featuring a treble clef, a key signature of one sharp (F#), and a 2/4 time signature. The notation includes various rhythmic values and accidentals. A circled section at the end of the staff contains a complex figure with a sharp sign and a cross above it.

Handwritten musical notation on a single staff, continuing the piece with similar rhythmic patterns and accidentals.

Handwritten musical notation on a single staff, featuring a treble clef and a 2/4 time signature. The notation includes a circled section with a sharp sign above it.

Handwritten musical notation on a single staff, featuring a treble clef and a 2/4 time signature. The notation includes a circled section with a sharp sign above it.

Handwritten musical notation on a single staff, featuring a treble clef and a 2/4 time signature. The notation includes a circled section with a sharp sign above it.

Handwritten musical notation on a single staff, featuring a treble clef and a 2/4 time signature. The notation includes a circled section with a sharp sign above it.

Handwritten musical notation on a single staff, featuring a treble clef and a 2/4 time signature. The notation includes a circled section with a sharp sign above it.

Four empty musical staves at the bottom of the page, indicating that the piece ends before the end of the page.

Handwritten musical notation on a single staff. The top part of the staff uses a treble clef and contains a melodic line with several notes and rests. The bottom part of the staff uses a bass clef and contains a bass line with notes and rests. The notation is dense and includes various accidentals and articulation marks.

Handwritten musical notation on a single staff. The top part of the staff uses a treble clef and contains a melodic line with notes and rests. The bottom part of the staff uses a bass clef and contains a bass line with notes and rests. The notation is dense and includes various accidentals and articulation marks.

Handwritten musical notation on a single staff. The top part of the staff uses a treble clef and contains a melodic line with notes and rests. The bottom part of the staff uses a bass clef and contains a bass line with notes and rests. The notation is dense and includes various accidentals and articulation marks.

Handwritten musical notation on a single staff. The top part of the staff uses a treble clef and contains a melodic line with notes and rests. The bottom part of the staff uses a bass clef and contains a bass line with notes and rests. The notation is dense and includes various accidentals and articulation marks.

Handwritten musical score on aged paper, featuring several staves with notes, rests, and clefs. The notation includes various accidentals (sharps, flats, naturals) and rests. The score is organized into measures, with some measures containing multiple notes and rests. The notation is dense and appears to be a working draft or a study score. The first staff has a treble clef and contains a series of notes with stems pointing up and down, some with accidentals. The second staff has a bass clef and contains a few notes with stems pointing up. The third staff has a bass clef and contains a series of notes with stems pointing up. The fourth staff has a bass clef and contains a series of notes with stems pointing up. The fifth staff has a treble clef and contains a series of notes with stems pointing up. The sixth staff has a bass clef and contains a series of notes with stems pointing up. The seventh staff is empty. The eighth staff is empty. The ninth staff is empty. The tenth staff is empty. The eleventh staff is empty. The twelfth staff is empty. The thirteenth staff is empty. The fourteenth staff is empty. The fifteenth staff is empty. The sixteenth staff is empty. The seventeenth staff is empty. The eighteenth staff is empty. The nineteenth staff is empty. The twentieth staff is empty.

TO TRAΓΩΔΙΟΥ ΝΑΪΑ

①

F (η Σίμπη από Πυρ.)

②

F

Piu P

dim

Più Piu

③ Musical notation for exercise 3, first staff. Treble clef, 3/4 time signature. Notes: G4, A4, B4, C5, B4, A4, G4. Dynamics: *f*, then *dim.* with a dashed line.

④ Musical notation for exercise 4, two staves. Treble and bass clefs, 3/4 time signature. Notes: G4, A4, B4, C5, B4, A4, G4. Dynamics: *f*, then *ff*.

⑤ Musical notation for exercise 5, four staves. Treble and bass clefs, 3/4 time signature. Notes: G4, A4, B4, C5, B4, A4, G4. Dynamics: *p*, then *f*.

Musical notation for exercise 5, continuation on three staves. Treble and bass clefs, 3/4 time signature. Notes: G4, A4, B4, C5, B4, A4, G4. Dynamics: *p*, then *f*.

W