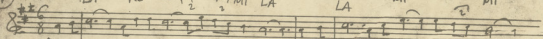


①

LA RE LA $\frac{1}{2}$ $\frac{1}{2}$ MI² LA LA MI MI



Sao 0 - Tau huan Avoo q⁴ Xa⁴ q⁴ fa⁴ sau Javon Des huan voir q⁴ e⁴ er sei

Klar.

Flaut

Vcel tenuto

Obay pizz.

OTAN MIAN ANDI EH

9

RE RE LA MI LA

Handwritten musical notation on a five-line staff. The notes are: quarter note G4, quarter note A4, quarter note B4, quarter note C5, quarter note B4, quarter note A4, quarter note G4, quarter note F4, quarter note E4, quarter note D4. The notes are grouped into four measures. The lyrics 'RE RE LA MI LA' are written above the staff, aligned with the notes.

Ka - ba e sa va spi sa ta xi pin o sa ka ji pa pi sa ka ji pa pi sa

Handwritten musical notation on a five-line staff. The notes are: quarter note G4, quarter note A4, quarter note B4, quarter note C5, quarter note B4, quarter note A4, quarter note G4, quarter note F4, quarter note E4, quarter note D4. The notes are grouped into four measures.

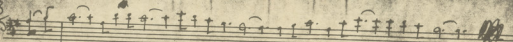
Handwritten musical notation on a five-line staff. The notes are: quarter note G4, quarter note A4, quarter note B4, quarter note C5, quarter note B4, quarter note A4, quarter note G4, quarter note F4, quarter note E4, quarter note D4. The notes are grouped into four measures.

(A)
(B)

Handwritten musical notation on a five-line staff. The notes are: quarter note G4, quarter note A4, quarter note B4, quarter note C5, quarter note B4, quarter note A4, quarter note G4, quarter note F4, quarter note E4, quarter note D4. The notes are grouped into four measures.

K1.
12x
ve
CO3

3



LA RE LA MI LA LA MI MI

Vcllo *12-11*

Piano *12-11*
arco

CBay

K1.

12a



RE RE RE LA LA MI MI LA

Vcllo

Piano

CBay

K1.

12a

(A)
(B)

5

LA RE LA MI LA

MI MI

Fl. *ucadara suu*

Piano

Opac *suu*

Kt

Pr

Ob

Viol

Fl

RE

RE

RE

LA

MI

MI

LA

Fl

Piano

Opac

(A)

(C)

Kt

Pr

Viol

CB

Solo

LA RE LA MI RE LA MI

São Hias tiao ta à fi Jha São Jo xos mais per ois na vna à fi ja Ahoi te es.

Piano

(A)
(B)
Vcel
CB

RE RE LA MI LA

iao ta de poua pa - na miogã na coo na jué pou fi ja na jué pou ei fe.

FL
OB