

Κωστής Στυλίου ΜΕΝΑ ΚΑΓΑΒΙ ΟΝΕΙΡΑ Μηνύ Τεμπουλί

Handwritten musical score for the song "ΜΕΝΑ ΚΑΓΑΒΙ ΟΝΕΙΡΑ" by Κωστής Στυλίου. The score is written in G major (one sharp) and 2/4 time. It consists of ten staves of music with lyrics in Greek. The lyrics are: Μ'έ- να κα- γα- βί ο- νεί- ρα κι- να- σα- βί- σα- κι- να- σα- βί ο- νεί- ρα κι- να- σα- βί ο- νεί- ρα κι- να- σα- βί ο- νεί- ρα. The score includes various musical notations such as notes, rests, and bar lines, along with chord symbols (Sol, FAm, Da, Sibm) and dynamic markings (p, f). The piece concludes with a double bar line and a final chord.

FAM DO Slom DO SSU

Soi ku M'ê. va ka paí B.

FAM SSU SSU DO

ô. vê. pa k'ê. Vou rin fú ca ka

Slom DO 3FA FA ki Slom

Ki opekian Se pang XURE-

FA DO FA FA

sey Yíat'at' gai

FA Slom DO FA

naw vai ya - Dá' gô Slom DO

Slom DO Dá' gô Slom DO

Kián Sôu tav Bôw Sôu vorai - fo.

FA DO FA FA

hau Kau voip jioé -

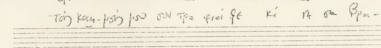
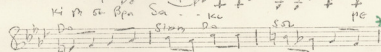
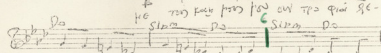
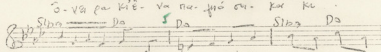
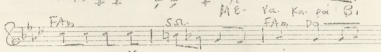
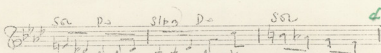
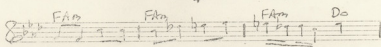
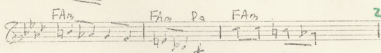
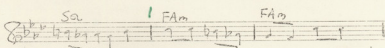
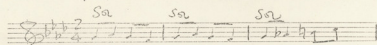
FA Slom DO FA

Jú gai q'toi - - gô

Avec un bateau chargé des rères

N° 4

Kissas Zimpaing M'ENA KACABI ONEIPA Mping Zimpaing



FAm Pa Siam Do Sou

Sai ku y'É. va ka pa B.

FAm Sou Siam DO

ô va. pa ki's. va tin jús sa ka + +

Siam DO 3 FA 9 FA ki Siam

Kô ope kiav se pang xipe.

FA DO FA FA 10

sey yia'ton sui

FA Siam DO FA

naw va ya - su Siam DO 13

Siam DO 11 DO 12

Kiav Siam ton Gai Siam vaia - fo. 12

FA Siam DO FA FA

hou Siam DO FA Kai vup jipe - 14

FA Siam DO FA

Ju sui q'ia - - fu

Mun

SEPTIEMBRE 1933
MEXICO