

1. ΚΑΜΑΡΙΝΕΝΟΣ

Ο ΕΧΘΡΟΣ ΛΑΟΣ

M. ΓΕΩΡΓΙΑΚΟΣ

Αρσιόρα  
Tutti

(A)

Flute  $\text{B}^{\flat} \text{C}$

Violin  $\text{B}^{\flat} \text{C}$  *Sim* | *Sim* LA | *Sim* | *Sim* SA LA |

Viola  $\text{D}^{\flat} \text{C}$  *pn*

Timpani  $\text{D}^{\flat} \text{C}$



Tuba  $\text{B}^{\flat} \text{C}$

Kb  $\text{B}^{\flat} \text{C}$  *Sim* [*Min*] | *Sim* | LA SA LA | *Sim* |

Trp  $\text{D}^{\flat} \text{C}$

T. 2  $\text{D}^{\flat} \text{C}$



Tuba II *v. lo*  $\text{B}^{\flat} \text{C}$

Trp  $\text{D}^{\flat} \text{C}$  *si* | *si* |

Flute  $\text{B}^{\flat} \text{C}$

Viola  $\text{D}^{\flat} \text{C}$

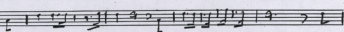
Timpani  $\text{D}^{\flat} \text{C}$

Flute  $\text{B}^{\flat} \text{C}$

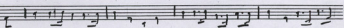
Viola  $\text{D}^{\flat} \text{C}$

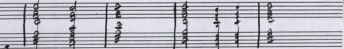
Timpani  $\text{D}^{\flat} \text{C}$

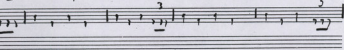
(B)

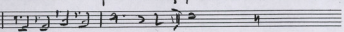
Drum  $\text{Gbc}$  

Klapp  $\text{Gbc}$  *Ren* | *Ren Da* | *Ren* | *Ren Sis Da* | *Ren* |

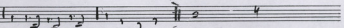
Basso  $\text{Gbc}$  

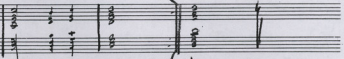
Piano  $\text{Gbc}$  

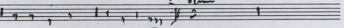
Tromba  $\text{Gbc}$  

P 

Klapp  $\text{Gbc}$  *Ren* | *Da Sis Da* | *Ren* |

Basso  $\text{Gbc}$  

Piano  $\text{Gbc}$  

Tromba  $\text{Gbc}$  

Empty musical staves for further notation.

(F)

Handwritten musical score for a piece in 6/8 time, featuring a key signature of one flat (B-flat). The score is divided into two systems.

**System 1:**

- Flute:** Melodic line starting with a quarter rest, followed by eighth and quarter notes.
- Voice:** Lyrics: Min RE | Min | Min Do RE | Min
- Bass:** Accompanying bass line.
- Piano:** Chordal accompaniment.
- Timpani:** Percussion accompaniment.

**System 2:**

- Flute:** Continuation of the melodic line, ending with a double bar line.
- Voice:** Lyrics: Min | RE Do RE | Min
- Bass:** Accompanying bass line.
- Piano:** Chordal accompaniment.
- Timpani:** Percussion accompaniment.

The score includes various musical notations such as rests, notes, stems, and dynamic markings.

①

Piano 9/8 | *[Musical notation]*

Fl 8/4 | *[Musical notation]*

Key 6/8 *lan lan lan lan De lan lan De lan*

Viol I 8/4 | *[Musical notation]*

Viol II 8/4 | *[Musical notation]*

Viola 8/4 | *[Musical notation]*

Viol III 8/4 | *[Musical notation]*

Choro | *[Musical notation]*

Piano 8/4 | *[Musical notation]*

*Mi lan no  
Contrabasso  
Vol. espressi  
p. piano (pp)  
extra*

Tuba 8/4 | *[Musical notation]*

Tuba 8/4 | *[Musical notation]*

Tuba 8/4 | *[Musical notation]*

Harmonica 4/4 | *[Musical notation]*

Time 4/4 | *[Musical notation]*

'Aomiton

Musical staff with treble clef. The notation includes a series of notes and rests. A circled number '2' is written above the staff. The word 'Tale' is written above the staff with a line connecting it to a specific note.

Musical staff with bass clef. The notation includes a series of notes and rests.

Lyrics: *Sei Sei Sei Sei Sei Sei Sei Sei*

Musical staff with piano accompaniment. It features a grand staff with treble and bass clefs. The notation includes chords and melodic lines.

Musical staff with piano accompaniment. It features a grand staff with treble and bass clefs. The notation includes chords and melodic lines.

Musical staff with piano accompaniment. It features a grand staff with treble and bass clefs. The notation includes chords and melodic lines.

Musical staff with piano accompaniment. It features a grand staff with treble and bass clefs. The notation includes chords and melodic lines.

Handwritten musical notation on a single staff, featuring a treble clef and a series of rhythmic notes and rests.

Handwritten musical notation on a single staff, featuring a bass clef and a few notes.

bla bla bla bla bla bla bla bla bla bla

Handwritten musical notation for a piano accompaniment, showing four staves with various notes and rests.

Handwritten musical notation on a grand staff (treble and bass clefs) with several measures.

Handwritten musical notation on three staves, including a treble clef and a bass clef, with notes and rests.

Handwritten musical notation on a single staff with a treble clef and a few notes.

Handwritten musical notation on a single staff with a treble clef, featuring some notes and rests, some of which are crossed out.

③

*Allegro* *Allegro*

*Allegro*

blan jlan lan se lan lan da sa lan |

*Piasso*  
*Cassa*

Handwritten musical notation on a grand staff, including a circled '1' in the upper right corner.

Handwritten musical notation with lyrics: *lem lem Sa Sa Sa lem lem Sa*

Handwritten musical notation with lyrics: *lem Sa*



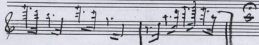
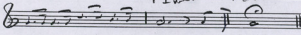
blom lam do se lam zem lam



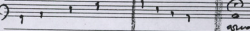
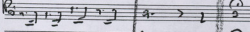
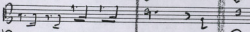
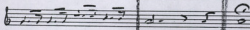
zambly lam do se lam zem lam

rit

1. 2. 3. 4. 5. 6.

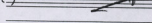
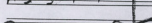
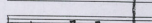
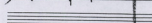
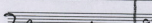
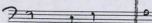
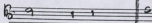


6 Saw Dasu lam lam



am

1  
2



am