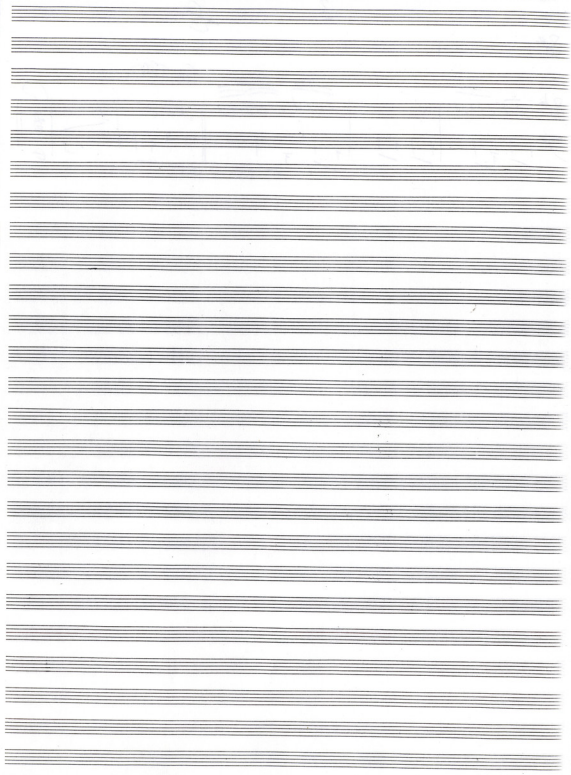




This page contains a handwritten musical score for guitar and bass. It is organized into several systems, each consisting of a treble clef staff (top) and a bass clef staff (bottom). The score includes various time signatures such as 8/8, 8/4, 8/6, and 8/2. Section markers A, B, C, and D are circled in the upper staves of the second, third, and fourth systems. The notation includes notes, rests, and other musical symbols. A circled measure in the fifth system contains the letters 'SI' above it. The handwriting is in black ink on aged paper.





Handwritten musical notation on a single staff, starting with a treble clef and a key signature of one flat. The notation includes a series of notes and rests, with a '3' written above the final measure.

Handwritten musical notation on a grand staff (treble and bass clefs). The treble clef part contains several measures of music with notes and rests. The bass clef part contains a rhythmic accompaniment consisting of eighth notes.

Handwritten musical notation on a single staff, continuing the melody from the previous system. It features a treble clef and a key signature of one flat.

Handwritten musical notation on a grand staff. The treble clef part shows a sequence of chords and moving lines. The bass clef part continues the rhythmic accompaniment.

Handwritten musical notation on a single staff, showing a continuation of the melodic line with various note values and rests.

Handwritten musical notation on a grand staff. The treble clef part includes some complex rhythmic patterns and accidentals. The bass clef part maintains the accompaniment.

Handwritten musical notation on a single staff, featuring a series of notes and rests, possibly a continuation of the main melody.

Handwritten musical notation on a grand staff. The treble clef part shows a progression of chords and melodic fragments. The bass clef part provides a steady accompaniment.

Handwritten musical notation on a single staff, continuing the melodic development with various note values.

Handwritten musical notation on a grand staff. The treble clef part concludes with a final chord and melodic phrase. The bass clef part ends with a rhythmic flourish.

