

3-4-5-6-7-8-9-10-11-12

-1- Womitten

Solo

Handwritten musical notation for the first system. It begins with a circled treble clef and a 3/4 time signature. The notation consists of several staves, including a vocal line and piano accompaniment. The first staff shows a melodic line with eighth and sixteenth notes. The lower staves show chordal accompaniment with some rhythmic notation.

↓ Adm

rem

Handwritten musical notation for the second system. It starts with a treble clef and a 3/4 time signature. The notation includes a vocal line and piano accompaniment. The piano part features chords with stems and some rhythmic markings.

rem

rem

solo

Handwritten musical notation for the third system. It begins with a treble clef and a 3/4 time signature. The notation shows a vocal line and piano accompaniment. The piano part has chords with stems and some rhythmic notation.

rem

sl

Handwritten musical notation for the fourth system. It starts with a treble clef and a 3/4 time signature. The notation includes a vocal line and piano accompaniment. The piano part features chords with stems and some rhythmic markings.

2 Wehrlieder

Handwritten musical score for "2 Wehrlieder". The score is written on ten systems of staves, each system containing a vocal line (treble clef) and a piano accompaniment (bass clef). The music is in a common time signature (C) and features various rhythmic patterns and melodic lines. The lyrics are written above the vocal staves.

Lyrics for the first system: *ze*

Lyrics for the second system: *Sau ze ze*

Lyrics for the third system: *la la*

Lyrics for the fourth system: *la ze Do*

Lyrics for the fifth system: *Stom Do Stom Stom*

3. Weikwapa

Handwritten musical notation for the first system. It consists of three staves: a treble clef staff with notes and the label "mebm", a bass clef staff with notes and the label "sibm", and a third staff with notes and the label "Do".

Handwritten musical notation for the second system. It consists of three staves: a treble clef staff with notes and the label "FA Do", a bass clef staff with notes and the label "Do", and a third staff with notes and the label "RE".

Handwritten musical notation for the third system. It consists of three staves: a treble clef staff with notes and the label "lan", a bass clef staff with notes and the label "zen", and a third staff with notes and the label "zen".

Handwritten musical notation for the fourth system. It consists of three staves: a treble clef staff with notes and the label "lu", a bass clef staff with notes and the label "sib", and a third staff with notes and the label "sa".

Handwritten musical notation for the fifth system. It consists of three staves: a treble clef staff with notes and the label "aexa", a bass clef staff with notes, and a third staff with notes.

Handwritten musical notation on a single staff, starting with a treble clef and a key signature of one flat. The notation includes a series of eighth and sixteenth notes with stems pointing down. A circled number '8' is written above the first few notes. The staff ends with a fermata and a circled number '3'.

Handwritten musical notation on a single staff, continuing the piece with eighth and sixteenth notes and stems pointing down.

Handwritten musical notation on a single staff, featuring eighth and sixteenth notes with stems pointing down.

Handwritten musical notation on a single staff, showing eighth and sixteenth notes with stems pointing down.

Handwritten musical notation on a single staff, with eighth and sixteenth notes and stems pointing down.

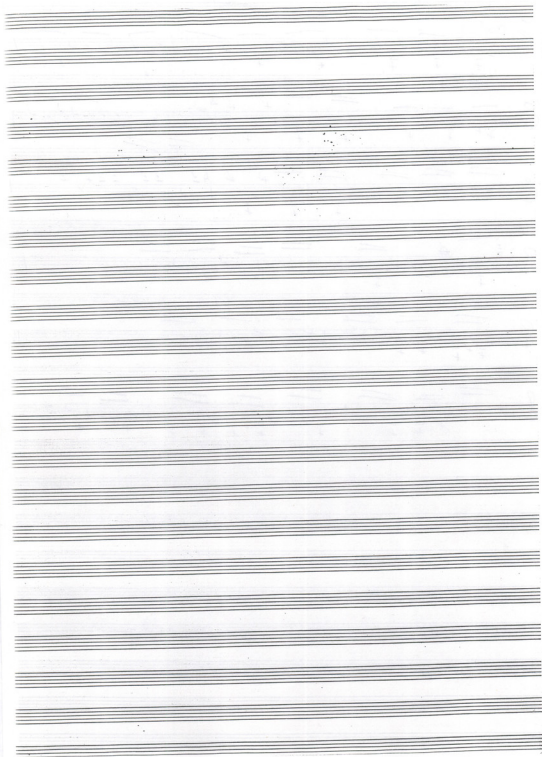
Handwritten musical notation on a single staff, continuing the sequence of eighth and sixteenth notes with stems pointing down.

Handwritten musical notation on a single staff, showing eighth and sixteenth notes with stems pointing down.

Handwritten musical notation on a single staff, with eighth and sixteenth notes and stems pointing down.

Handwritten musical notation on a single staff, showing eighth and sixteenth notes with stems pointing down.

Handwritten musical notation on a single staff, with eighth and sixteenth notes and stems pointing down.



7 ΕΠΙΣΤΡΕΨΩ ΟΥΡΑΝΩΣ

(-550) *for*
 lam MI RE Do RE lam

lam
 Th' Hōmōn ki pa' th' oūroōn oōn nēnēōn hōi oōn

3
 la RE lam RE lam

lam *3* *mibm*
 kaōn nē pa' th' oūroōn n' x'raōn oōn - hōi - t'raōn oōn

3
 mib Dob mibm

mibm *LAB* *mibm*
 nē vōi t'raōn x'raōn - si - kai t'raōn x'raōn x'raōn si

mibm *LAB Solo*

mibm *lam* *mibm* *lam* *mibm* *lam*
 oū t'raōn vō to x'raōn vō - oū vō - ke a vō

3
 REb lam

8 NOSTALGIA

(♩ = 5A) *And* *Labm* *3* *REB*

8 > b̄ | b̄ b̄ b̄ b̄ b̄ | b̄ b̄ b̄ b̄ b̄ | b̄ b̄ b̄ b̄ b̄ | b̄ b̄ b̄ b̄ b̄ |

stis keepy now say say say say say say say say

REB *Labm* *Labm* *REB*

8 > b̄ | b̄ b̄ b̄ b̄ b̄ | b̄ | b̄ b̄ b̄ b̄ b̄ | b̄ b̄ b̄ b̄ b̄ | b̄ b̄ b̄ b̄ b̄ |

no no no va suu

REB *Labm* *Labm*

8 > b̄ | b̄ b̄ b̄ b̄ b̄ | b̄ | b̄ b̄ b̄ b̄ b̄ | b̄ b̄ b̄ b̄ b̄ | b̄ b̄ b̄ b̄ b̄ |

Ev do ps ke m h. a.

Labm *LAD*

8 > b̄ | b̄ b̄ b̄ b̄ b̄ | b̄ | b̄ b̄ b̄ b̄ b̄ | b̄ b̄ b̄ b̄ b̄ | b̄ b̄ b̄ b̄ b̄ |

ya on how

LAD *midm* *Sol#m*

8 > # | # b̄ | # b̄ b̄ b̄ b̄ | # b̄ b̄ b̄ b̄ b̄ | # b̄ b̄ b̄ b̄ b̄ | # b̄ b̄ b̄ b̄ b̄ |

Ev o- vo ke te te ke te te ke te

Sol#m *Labm*

8 > # | # b̄ | # b̄ b̄ b̄ b̄ b̄ | # b̄ b̄ b̄ b̄ b̄ | # b̄ b̄ b̄ b̄ b̄ | # b̄ b̄ b̄ b̄ b̄ |

o te evi Ei h. A. va sta on to ko spou no

midm *REB* *FINIS*

8 > b̄ | b̄ b̄ b̄ b̄ b̄ | b̄ b̄ b̄ b̄ b̄ | b̄ b̄ b̄ b̄ b̄ | b̄ b̄ b̄ b̄ b̄ |

nan- TAN o Jay va- TO'S

H. A. G. ...
 1st ...
 2nd ...
 1994 ...
 1995 ...
 H. A. G. ...
 1995 ...

[Signature]

Το ΑΥΤΟΚΤΟΝΙΑ ΕΡΕΘΙΣ ΜΗΝΟΣ

Do

F E ερεθισ του γου σου αυ. το κρι. μη σε

FA dom

αι. το. βρα. δο. αι. γι. σου ταυ σου οε χη σου κη

FA dom

κα. ταυ. ο. σω. νε. τω. ψυ. χη. σου

Solm Do Sib Do

καε τω. ου. φοε. νι. τω. χα. με. νω. περ. φου. ειν'

Do FA

οι. νε. ο. ου. ξε. κω. μη. νε. του. φου. νο. τω. πο.

FA Do

οε. κι. πο. τω. ο. ου. τω. φου. ου. νι. χη. σε

Do Sol Do Sib form Do

στα. ο. ρα. ο. χη. Α. γι. ο. ο. Ε. ου. τω.

Do rem DO form

Α. γι. ο. ο. και. πο. Α. γι. ο. ο. ου. νε

Do Sol Do

τω. ε. τε. η. ου. ε. τε. η. ου. η.

Handwritten musical score on three staves. The first staff begins with a treble clef and a key signature of one flat (B-flat). The melody consists of quarter and eighth notes. Above the staff, the word "dom" is written at the beginning and end, with a slur connecting them. Below the staff, the lyrics "Kok - Ki. Ya Ta. Su. Vais. Sa. pa. Ta. o. ko. Brou. Taru" are written. The second staff starts with a bass clef and continues the melody. Above it, "fam" is written at the beginning and "dom" at the end. Below it, the lyrics "i'ai ya na pu e Xai gn ke si'au. ste- pia" are written. The third staff also begins with a bass clef. Above it, "fam" is written at the beginning, "Sol" with a sharp sign in the middle, and "dom" at the end. Below it, the lyrics "i'ai ya gn pu e. Xai gn ke si'au. ste pia" are written. The piece concludes with a double bar line and the word "FINE" written to the right.

[Handwritten signature]
 Polopolo
 2. VII. 95

