

Ὁ ΓΙΟΣ ΜΟΥ ΕΙΝΑΙ ΕΝΝΙΑ ΧΡΟΝῶΝ

(A)

Musical score for the first system. The treble staff (top) contains a whole rest. The bass staff (bottom) contains a series of chords and notes, including a half note chord with a sharp sign above it, followed by several quarter notes and chords. The key signature is one flat (B-flat).

Two empty musical staves, one treble and one bass, with a flat key signature.

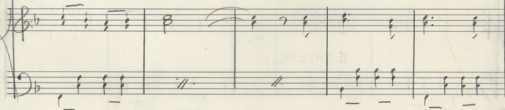
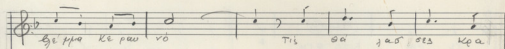
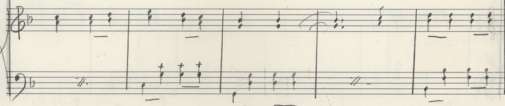
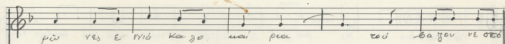
Musical score for the second system. The treble staff (top) contains a series of chords and notes, including a half note chord with a sharp sign above it, followed by several quarter notes and chords. The bass staff (bottom) contains a series of chords and notes, including a half note chord with a sharp sign above it, followed by several quarter notes and chords. The key signature is one flat (B-flat).

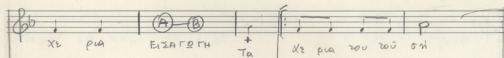
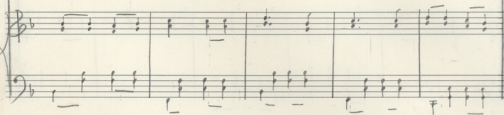
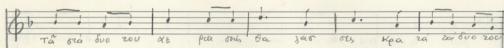
Two empty musical staves, one treble and one bass, with a flat key signature.

Handwritten musical score for the first system. It consists of three staves: a top treble staff, a middle treble staff, and a bottom bass staff. The top staff is mostly empty. The middle staff contains a series of chords, each marked with a '+' sign above it. The bottom staff contains a corresponding bass line with chords, also marked with '+' signs. The music is in a key with one flat (B-flat).

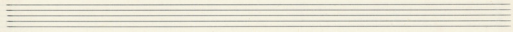
ⓑ

Handwritten musical score for the second system, starting with a circled 'B'. It features three staves: a top treble staff with a vocal line and lyrics, a middle treble staff, and a bottom bass staff. The lyrics are: "ο + του σου ε + ναυ - ε + ννα απο ναυ e + μαχε". The word "FIN." is written in the middle staff. The music is in a key with one flat (B-flat) and a 2/4 time signature.



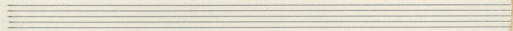


5



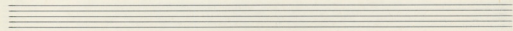
Handwritten musical notation in G major (one sharp) and 2/4 time. The melody is written in the treble clef. The lyrics are in Greek: "μη σαν φημ γα" and "Τὴν ἴασην σου Κορὴ σαυρα". There are two first endings marked with "I" and "II".

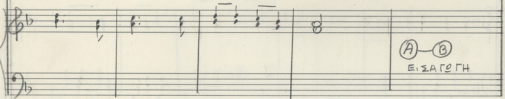
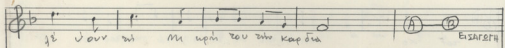
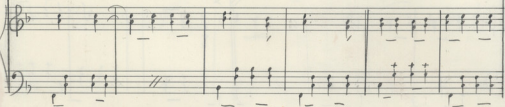
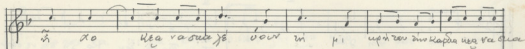
Handwritten musical notation in G major and 2/4 time. The accompaniment is written in the bass clef. It features a simple harmonic accompaniment with some rests and a double bar line. There are two first endings marked with "I" and "II".



Handwritten musical notation in G major and 2/4 time. The melody is written in the treble clef. The lyrics are in Greek: "τοῦ Χο Μι εἰς τὴν ἴα σου σου σου".

Handwritten musical notation in G major and 2/4 time. The accompaniment is written in the bass clef. It features a simple harmonic accompaniment with some rests and a double bar line.





7

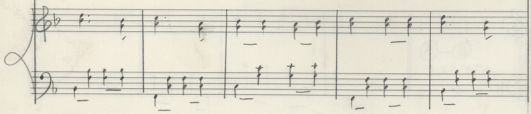
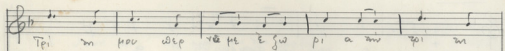
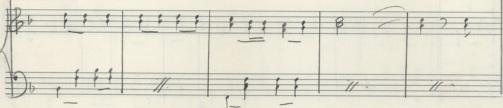
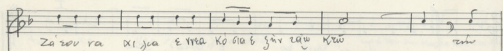
Handwritten musical score for the first system. The vocal line is in G major (one sharp) and 4/4 time. The lyrics are: "no' sou ca pe e' pui e so 'e' bea'i: eu". The piano accompaniment consists of a right-hand part with chords and a left-hand part with a simple bass line. A first ending bracket is present at the end of the system.

Vocal line: *no' sou ca pe e' pui e so 'e' bea'i: eu*

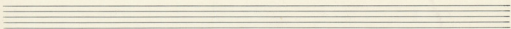
Handwritten musical score for the second system. The vocal line continues in G major. The lyrics are: "mi' tu' pu' te' p'ra' v'os' q'uo' o'is' em' fi' a". The piano accompaniment continues with chords and a bass line. A first ending bracket is present at the end of the system.

Vocal line: *mi' tu' pu' te' p'ra' v'os' q'uo' o'is' em' fi' a*

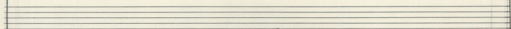








μου τη προ ης εγω ρι α ΕΙΣΑΓΕΤΗ



ΕΙΣΑΓΕΤΗ

