

-1-

ΨΗΛΑ ΣΤΗ ΡΟΣΣΙΑ

2

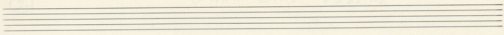
Handwritten musical score for the first system. It consists of a treble clef staff and a bass clef staff. The time signature is 12/8 and the key signature has one sharp (F#). The vocal line starts with a whole rest, followed by a series of notes. The piano accompaniment features chords and arpeggiated patterns. Two first endings are marked with '2' in boxes.

Two empty musical staves, one treble clef and one bass clef.

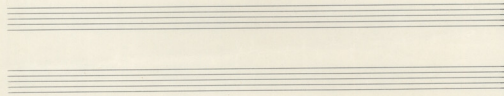
Handwritten musical score for the second system. It continues the vocal and piano parts from the first system. The vocal line includes the lyrics "Ψη" and "pa" written below the notes. The piano accompaniment continues with chords and arpeggiated figures.

Je στας Πρωσι - ας ζα χιο για ε
yai ωνς ρα γοι - δω γου γοι δια παι
γυι δεσ ρε ρενν - και δε ρα ζουν

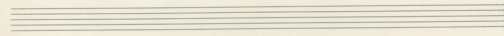
μι τρου φυ σα η ο Βορ φιας ζο γαν
οι ζουν και ζο - για και ζα - σκου
ηα η και ζου εν η γι για ηα



δὲ γὰρ νῦν θά - ρουν αἰ ὧ
 φὰς ἐν ποσὶ κάποι - ρα' ἐκε σοῦ
 πᾶς ἐν σοὶ ὁ - λείπει εἰ
 να
 δια
 γουρ



πρὸς ἑρ - να ὁ δὲ γὰρ ο πα γὰς
 αἰ αἰ - γοί πας σοῦ γουρ θω πρ αρα
 οἰα κί γὰς ἐν ποσὶ καὶ οἰα θω πρ αρα



Handwritten musical score for the first system. The top staff is a vocal line in treble clef with a key signature of one sharp (F#) and a common time signature (C). The lyrics are written below the notes. The bottom two staves are for piano accompaniment, with the right hand in treble clef and the left hand in bass clef. The piano part consists of chords and arpeggiated figures.

275
zò zav do' is vos va^o - pou ai w
oia pa za pou pa'poi - za pou sou
pa pa du so o - pou pou za

Handwritten musical score for the second system. The top staff is a vocal line in treble clef with a key signature of one sharp (F#) and a common time signature (C). The lyrics are written below the notes. The bottom two staves are for piano accompaniment, with the right hand in treble clef and the left hand in bass clef. The piano part consists of chords and arpeggiated figures.

via
dia
youv
Tiro sfi - va o do' xios o ca
oi a'g - pou pas, souv ou pu
oza xi pou sv va o wo oia sfi oia va

Handwritten musical notation for the first system. It features two staves with treble clefs. The first staff contains a melody with a circled cross symbol, a key signature of one flat, and handwritten notes "yias", "u/ra", and "Diva". The second staff contains a complex accompaniment with many notes and rests. Both staves have circled cross symbols and a double bar line with a repeat sign.

Handwritten musical notation for the second system. It features two staves with treble clefs. The first staff contains a simple melody with a key signature of one flat and a double bar line. The second staff contains a simple accompaniment with a key signature of one flat and a double bar line.