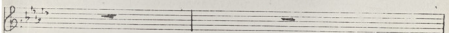
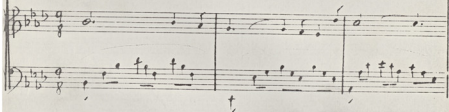
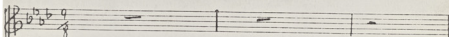


(ΑΙΧΜΗΡΕΙ, 5/319)

3^{ος}
« ΕΝΟΣΑΤΕ »



((' H ΕΤΙΚΗΡΥΞΗ.))

Musical staff with treble clef, key signature of two flats (B-flat, E-flat), and 8/4 time signature. The melody begins with a whole rest, followed by a series of quarter notes: G4, A4, B4, C5, B4, A4, G4. The lyrics below are: *Σεις ε πο ης αυ το οε ρα*

Two musical staves. The upper staff is in treble clef and the lower in bass clef, both with two flats and 8/4 time. The upper staff contains a series of chords, while the lower staff contains a bass line with quarter notes and rests.

Musical staff with treble clef, key signature of two flats, and 8/4 time signature. The melody consists of quarter notes: G4, A4, B4, C5, B4, A4, G4. The lyrics below are: *ου οε ρα ρε αυ ρε - ρι αυ ρι οε αυ ρο αυ ρο αυ*

Two musical staves in treble and bass clefs, both with two flats and 8/4 time. Both staves contain a series of chords, primarily triads and dyads, providing harmonic accompaniment for the lyrics above.

Handwritten musical score for a vocal line and piano accompaniment. The vocal line is written in a treble clef with a key signature of one sharp (F#) and a 9/8 time signature. The lyrics are: "E u si voi souf Xouv a wo yia zai8 sou nra sou, ma Xou - pi". A fermata is placed over the final note of the vocal line. The piano accompaniment is written in a grand staff (treble and bass clefs) with the same key signature and time signature. It consists of two systems of chords, with a fermata over the final chord of the second system.

Handwritten musical score for a piano accompaniment. The score is written in a grand staff (treble and bass clefs) with a key signature of one sharp (F#) and a 9/8 time signature. The first system shows a treble clef with a whole note chord and a bass clef with a whole note chord. The second system shows a treble clef with a dotted quarter note followed by an eighth note, and a bass clef with a dotted quarter note followed by an eighth note. The piece concludes with a fermata over the final notes in both staves.

-13-

Handwritten musical score for the first system, measures 1-3. The system consists of three staves. The top staff is a treble clef with a key signature of two sharps (F# and C#) and a common time signature (C). It contains three measures of whole rests. The middle staff is a treble clef with the same key signature and time signature, containing three measures of music: a half note followed by a quarter note, a half note followed by a quarter note, and a half note followed by a quarter note. The bottom staff is a bass clef with the same key signature and time signature, containing three measures of music: a half note followed by a quarter note, a half note followed by a quarter note, and a half note followed by a quarter note. There are small vertical marks below the first two measures of the bottom staff.

Handwritten musical score for the second system, measures 4-6. The system consists of three staves. The top staff is a treble clef with a key signature of two sharps (F# and C#) and a common time signature (C). It contains three measures of music: a half note followed by a quarter note, a half note followed by a quarter note, and a half note followed by a quarter note. The middle staff is a treble clef with the same key signature and time signature, containing three measures of music: a half note followed by a quarter note, a half note followed by a quarter note, and a half note followed by a quarter note. The bottom staff is a bass clef with the same key signature and time signature, containing three measures of music: a half note followed by a quarter note, a half note followed by a quarter note, and a half note followed by a quarter note. There are small vertical marks below the first and third measures of the bottom staff.

Στοις ἐπέφρασαι εὐς ἀγο πῆς

Γρά φαι ὄρο πα - μου ἔε ἡα ἡμ ἰπρεσσε τὰ πῆς εὐς ὄρο πενίπο πεπῆς

Handwritten musical notation on a single staff with lyrics in Greek. The lyrics are: "μου αγαπης στη καρδια - μου μου αγαπης στη καρδια - μου".

Handwritten musical notation on two staves, likely representing piano accompaniment. The notation includes chords and rhythmic markings.

Handwritten musical notation on a single staff, showing a key signature change to three flats and a common time signature.

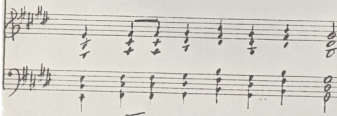
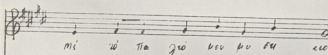
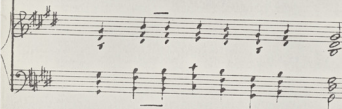
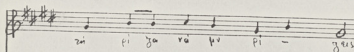
Handwritten musical notation on two staves, continuing the piece with a key signature of three flats and common time.

Handwritten musical score on two staves. The top staff is in treble clef with a key signature of three flats (B-flat, E-flat, A-flat). The bottom staff is in bass clef with the same key signature. The music consists of several measures with notes and rests. There are some red markings, including a star above a note in the second measure of the top staff and a plus sign below a note in the second measure of the bottom staff.

Handwritten musical score on a single staff in treble clef with a key signature of three flats. The staff contains a few notes, followed by a double bar line and a new section starting with a key signature change to two sharps (F-sharp, C-sharp). Below the notes, the text "suo regnum tuum Domine" is written in a cursive hand.

Handwritten musical score on two staves. The top staff is in treble clef with a key signature of three flats. The bottom staff is in bass clef with the same key signature. The music features a complex rhythmic pattern with many beamed notes. A key signature change to two sharps occurs in the second measure of both staves. The bottom staff includes some plus signs (+) above notes.

- 12 -



Musical staff with treble clef, key signature of three sharps (F#, C#, G#), and a common time signature. The melody consists of seven notes: G4, A4, B4, C5, B4, A4, G4. The lyrics below are: κίασ' εἰς τὸ θεῶν εὐαγγέλιον τὸ ἐν τῷ

Accompanying piano part for the first system, featuring chords in the right hand and bass notes in the left hand. The right hand chords are: G4-A4-B4, G4-A4-B4-C5, G4-A4-B4, G4-A4-B4, G4-A4-B4, G4-A4-B4. The left hand notes are: G3, A3, B3, C4, B3, A3, G3.

Musical staff with treble clef, key signature of three sharps, and a common time signature. The melody consists of seven notes: G4, A4, B4, C5, B4, A4, G4. The lyrics below are: το εὐαγγέλιον τὸ ἐν τῷ θεῶν εὐαγγέλιον. A fermata is placed over the final note G4.

Accompanying piano part for the second system. The right hand chords are: G4-A4-B4, G4-A4-B4-C5, G4-A4-B4, G4-A4-B4, G4-A4-B4, G4-A4-B4. The left hand notes are: G3, A3, B3, C4, B3, A3, G3. A fermata is placed over the final chord. The text «ΕΝΟΣΑΤΕ» is written in large letters to the right of the piano part.