

Handwritten musical score for a vocal line and piano accompaniment. The vocal line is in G major and 3/4 time, with lyrics in Greek. The piano accompaniment consists of two staves with chords and some melodic fragments.

Vocal line: $\text{G}^{\flat} \text{A}^{\flat} \text{B}^{\flat} \text{C}^{\flat} \text{D}^{\flat} \text{E}^{\flat} \text{F}^{\flat} \text{G}^{\flat}$ (3/4). Lyrics: $\mu\delta \text{ pes } \text{pe} \text{vvi} \text{es} \text{Ab} \text{ua} \text{zL} \text{ost} \text{pes}$. A fermata is placed over the final note.

Piano accompaniment: Two staves with chords and some melodic fragments. A fermata is placed over the final chord.

7. Ο ΛΟΓΟΣ Ο ΣΤΕΡΝΟΣ

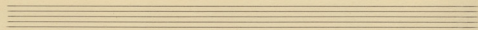
Handwritten musical score for a piano accompaniment. The score is in G major and 3/4 time, featuring chords with accents and a double bar line.

Staff 1: $\text{G}^{\flat} \text{A}^{\flat} \text{B}^{\flat} \text{C}^{\flat} \text{D}^{\flat} \text{E}^{\flat} \text{F}^{\flat} \text{G}^{\flat}$ (3/4). Chords with accents: $\text{G}^{\flat} \text{A}^{\flat} \text{B}^{\flat} \text{C}^{\flat}$, $\text{D}^{\flat} \text{E}^{\flat} \text{F}^{\flat} \text{G}^{\flat}$, $\text{A}^{\flat} \text{B}^{\flat} \text{C}^{\flat} \text{D}^{\flat}$. Double bar line.

Staff 2: $\text{G}^{\flat} \text{A}^{\flat} \text{B}^{\flat} \text{C}^{\flat} \text{D}^{\flat} \text{E}^{\flat} \text{F}^{\flat} \text{G}^{\flat}$ (3/4). Chords with accents: $\text{G}^{\flat} \text{A}^{\flat} \text{B}^{\flat} \text{C}^{\flat}$, $\text{D}^{\flat} \text{E}^{\flat} \text{F}^{\flat} \text{G}^{\flat}$, $\text{A}^{\flat} \text{B}^{\flat} \text{C}^{\flat} \text{D}^{\flat}$. Double bar line.

Handwritten musical score for the first system. The key signature has four flats (B-flat, E-flat, A-flat, D-flat). The vocal line (treble clef) begins with the lyrics "Ta pa - - - gi mou zvu". The piano accompaniment (bass clef) consists of chords and rhythmic patterns. A repeat sign is present at the beginning of the system.

Handwritten musical score for the second system. The key signature remains four flats. The vocal line (treble clef) continues with the lyrics "Pa ei zo fa za Pa." and includes a fermata over the final note. The piano accompaniment (bass clef) continues with chords and rhythmic patterns. A repeat sign is present at the beginning of the system.



Musical staff with treble clef, key signature of four flats (B-flat, E-flat, A-flat, D-flat), and a common time signature. The melody begins with a whole note D, followed by a measure with a fermata. The second measure is in 2/4 time and contains a quarter note G, an eighth note A, and a quarter note B. The third measure contains a quarter note A and a quarter note G. The lyrics "θα vai δε θα vai" are written below the notes.

Two staves of accompaniment. The upper staff is in treble clef with a key signature of four flats, showing chords and some melodic fragments. The lower staff is in bass clef with a key signature of four flats, showing a bass line with eighth notes and rests.

Musical staff with treble clef, key signature of four flats, and a common time signature. The melody continues with the lyrics "ΤΕΟ ΟΕ ΡΑΣ ΖΟ ΠΡΩ". There is a fermata over the word "ΠΡΩ". The staff ends with a double bar line and the word "Καπ" written below.

Two staves of accompaniment. The upper staff is in treble clef with a key signature of four flats, showing chords and melodic fragments. The lower staff is in bass clef with a key signature of four flats, showing a bass line with eighth notes and rests. The piece concludes with a double bar line and a repeat sign (//).

Handwritten musical notation on a single staff. The key signature is three flats (B-flat, E-flat, A-flat). The time signature is 3/4. The lyrics are: "qu' vous ai go via go via des".

Handwritten musical notation on two staves. The top staff is in treble clef and the bottom staff is in bass clef. The key signature is three flats. The music consists of chords and a bass line.

Handwritten musical notation on a single staff. The key signature is three flats. The lyrics are: "un - - Au ju - - a' go".

Handwritten musical notation on two staves. The top staff is in treble clef and the bottom staff is in bass clef. The key signature is three flats. The music consists of chords and a bass line.

Handwritten musical score for the first system. It consists of three staves. The top staff is a vocal line in G major (one sharp) and 2/4 time. The lyrics are: "via des Oi - - - - - po via des". The middle staff is a piano accompaniment in G major, 2/4 time, with a treble clef. The bottom staff is a piano accompaniment in G major, 2/4 time, with a bass clef. The system ends with a double bar line and a repeat sign.

Handwritten musical score for the second system. It consists of three staves. The top staff is a vocal line in G major (one sharp) and 2/4 time. The lyrics are: "Oi - - - - - po - via des ziv - Au". The middle staff is a piano accompaniment in G major, 2/4 time, with a treble clef. The bottom staff is a piano accompaniment in G major, 2/4 time, with a bass clef. The system ends with a double bar line and a repeat sign.

Handwritten musical notation on a single staff. The key signature has two flats (B-flat and E-flat). The time signature is 3/4. The notes are: a quarter note G4, a quarter note A4, a quarter note B4, a quarter rest, a quarter note G4, a quarter note F4, a quarter note E4. The lyrics "rn" are written below the first three notes, and "Ma' a'ios p'!" are written below the last three notes.

Handwritten musical notation on two staves. The top staff is in treble clef with a key signature of two flats and a 3/4 time signature. It contains a quarter note G4, a quarter note A4, a quarter note B4, a quarter rest, a quarter note G4, a quarter note F4, a quarter note E4. The bottom staff is in bass clef with a key signature of two flats and a 3/4 time signature. It contains a quarter note G2, a quarter note A2, a quarter note B2, a quarter rest, a quarter note G2, a quarter note F2, a quarter note E2. There are some additional markings in the bass staff, including a double bar line and a colon.

Handwritten musical notation on a single staff. The key signature has two flats (B-flat and E-flat). The time signature is 3/4. The notes are: a quarter note G4, a quarter note A4, a quarter note B4, a quarter rest, a quarter note G4, a quarter note F4, a quarter note E4. The lyrics "ra" are written below the first two notes, and "ei juá" are written below the last three notes.

Handwritten musical notation on two staves. The top staff is in treble clef with a key signature of two flats and a 3/4 time signature. It contains a quarter note G4, a quarter note A4, a quarter note B4, a quarter rest, a quarter note G4, a quarter note F4, a quarter note E4. The bottom staff is in bass clef with a key signature of two flats and a 3/4 time signature. It contains a quarter note G2, a quarter note A2, a quarter note B2, a quarter rest, a quarter note G2, a quarter note F2, a quarter note E2.

Handwritten musical notation on a single staff. The key signature is three flats (B-flat, E-flat, A-flat). The time signature is 3/4. The lyrics are: "a. o jo jos o cesp vos ea".

Handwritten musical notation on two staves. The top staff continues the melody from the previous system. The bottom staff contains piano accompaniment with chords and a double bar line. The key signature remains three flats.

Handwritten musical notation on a single staff. The key signature is three flats. The time signature is 3/4. The lyrics are: "vou trov ji NE upo oro Xu fa".

Handwritten musical notation on two staves. The top staff continues the melody. The bottom staff contains piano accompaniment with chords and a double bar line. The key signature remains three flats.

Handwritten musical score for the first system. It consists of three staves. The top staff is a vocal line in G major (one sharp) with lyrics: "Θά ναϊ νι φω νι πας Τράϊ - - νό δου ζ Χει". The middle staff is the right-hand piano accompaniment, and the bottom staff is the left-hand piano accompaniment. The music is in 4/4 time and includes various chordal textures and melodic lines.

Handwritten musical score for the second system. It consists of three staves. The top staff is a vocal line in G major with lyrics: "Γύ πεϊ ρίς ω πες ωουφ ανιρ οι ραυρα". The middle staff is the right-hand piano accompaniment, and the bottom staff is the left-hand piano accompaniment. The music continues with similar accompaniment patterns and concludes with a double bar line.

zi Es di Xws pa - Tca

Kiē vai za' o' Tpa wō zo fpa' oia xa pa

Kw - - - - - pa za va

Handwritten musical notation for the first system, featuring a vocal line with lyrics: "sé peus va sé peus va sé -". The notation includes a treble clef, a key signature of three flats (B-flat, E-flat, A-flat), and a common time signature. The lyrics are written below the notes.

Handwritten musical notation for the second system, including piano accompaniment for the first system. It features a treble clef and a bass clef, with a key signature of three flats. The piano part consists of chords and rhythmic patterns.

Handwritten musical notation for the third system, featuring a vocal line with lyrics: "peu vai sé peus.". The notation includes a treble clef, a key signature of three flats, and a common time signature. The lyrics are written below the notes.

Handwritten musical notation for the fourth system, including piano accompaniment for the third system. It features a treble clef and a bass clef, with a key signature of three flats. The piano part consists of chords and rhythmic patterns.

Handwritten musical notation for the fifth system, featuring a vocal line with lyrics: "é ju o - on ju mes". The notation includes a treble clef, a key signature of three flats, and a common time signature. The lyrics are written below the notes.

Handwritten musical notation for the sixth system, including piano accompaniment for the fifth system. It features a treble clef and a bass clef, with a key signature of three flats. The piano part consists of chords and rhythmic patterns.

Handwritten musical score for the first system. It consists of a vocal line and two piano accompaniment lines. The key signature is three flats (B-flat, E-flat, A-flat), and the time signature is 3/4. The vocal line has the lyrics: "omi oyi fe va xu - - pa - - e". The piano accompaniment features chords in the right hand and a bass line in the left hand.

Handwritten musical score for the second system. It consists of a vocal line and two piano accompaniment lines. The key signature is three flats (B-flat, E-flat, A-flat), and the time signature is 3/4. The vocal line has the lyrics: "ju o - - om ju mes om - oyi fe va". The piano accompaniment features chords in the right hand and a bass line in the left hand.

Handwritten musical score for the third system. It consists of a vocal line and two piano accompaniment lines. The key signature is three flats (B-flat, E-flat, A-flat), and the time signature is 3/4. The vocal line has the lyrics: "xu - - - - pa - - ra". The piano accompaniment features chords in the right hand and a bass line in the left hand.

Handwritten musical notation for the first system, featuring a vocal line with lyrics and piano accompaniment. The lyrics are: *Je suis va Je suis va Je*

Handwritten musical notation for the second system, featuring a vocal line with lyrics and piano accompaniment. The lyrics are: *suis va Je*

Handwritten musical notation for the third system, featuring a vocal line with lyrics and piano accompaniment. The lyrics are: *suis va Je - - - suis e*

Handwritten musical notation for the fourth system, featuring a vocal line with lyrics and piano accompaniment. The lyrics are: *Je suis va Je*

Handwritten musical notation for the fifth system, featuring a vocal line with lyrics and piano accompaniment. The lyrics are: *Je suis va Je suis va Je suis va Je suis va Je suis va*

Handwritten musical notation for the sixth system, featuring a vocal line with lyrics and piano accompaniment. The lyrics are: *Je suis va Je suis va Je suis va Je suis va Je suis va*

Handwritten musical notation for the seventh system, featuring a vocal line with lyrics and piano accompaniment. The lyrics are: *Je suis va Je suis va Je suis va Je suis va Je suis va*

Musical staff with lyrics: Xw - - pa - - è ju' o' m' ju'

Musical staff with accompaniment

Musical staff with lyrics: 4 p'is omi B, ps m' Xw - - pa.

Musical staff with accompaniment

Musical staff with accompaniment

Musical staff with accompaniment

Musical staff with accompaniment